

## 1 Minimum System Requirements

- Pentium 4 compatible processor 1.2GHz or higher (2.0GHz recommended)
- Minimum 256MB RAM or above (512MB recommended)
- VGA card with minimum 32MB memory
- AC97 compatible sound card
- HD space at least 1 GB free for installation
- Microsoft DirectX 9 or above
- Windows 2000 or above
- Windows Media Player 9 or above

## 2 Package Contents

- DTR-100D USB 2.0 Digital TV Receiver
- Installation CD (Include User Manual, Quick Installation Guide, Utility and Driver)
- Remote Controller
- DVB-T TV Antenna

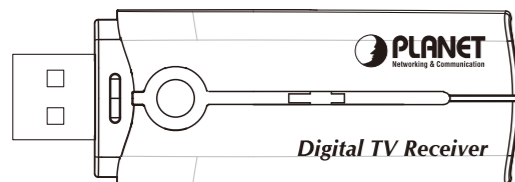
- 1 -

## 3 Before Startup

### 3.1 Physical Specification

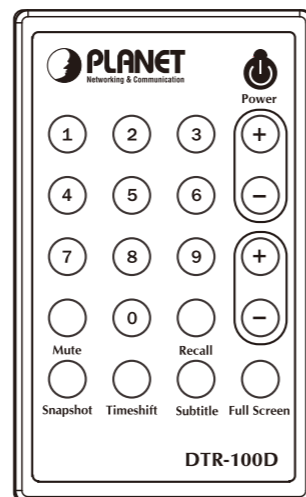
#### Outlook

DTR-100D USB 2.0 Digital TV Receiver



- 2 -

Remote Controller



- 3 -

#### Button Definition

Button	Description
Power	Turn on or off digital TV receiver.
CH (+,-)	Click + or - button to adjust the channel.
VOL (+,-)	Click + or - button to adjust the volume of sound.
Full Screen	To switch into full screen mode.
Recall	Click the "Recall" to go back the last channel you just selected.
Subtitle	This only available with the local TV provider which also support this feature. Click this button, and you can view the extra text on the channel screen.
Timeshift	With this button, you can pause while watching TV program and continue from where you left.
Mute	To switch volume to mute mode.
Snapshot	To capture the channel screen you are just watching.
Keyboard 0-9	You can directly to press the number to view the channel you like to watch.

- 4 -

## 3.2 Physical Installation

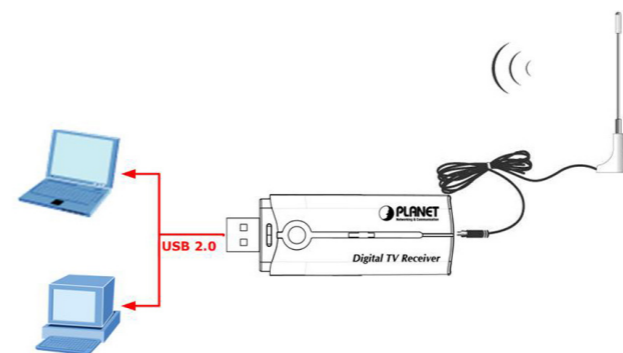
This chapter explains how to install DTR-100D with your computer or notebook.

### 1. Connecting USB Port

Connect USB connector of the DTR-100D to the USB port on your computer or notebook.

### 2. Connecting Terrestrial Antenna

Connect the supplied DVB-T antenna to the VHF/UHF port on the backside of the DTR-100D.



- 5 -

### 3. Install Device Driver & Utility

(1) After installing the DTR-100D into your computer or notebook, the system will find a new hardware device as the below figure "Found New Hardware Wizard" will appear. Please click "Cancel" to exit the Wizard.



- 6 -

(2) Please insert the supplied CD into your CD drive, and then install the utility and driver. There are three utilities in the supplied CD: **Windows Media Player 9**, **Microsoft DirectX 9**, and **ArcSoft TotalMedia**.

The installation procedure: Windows Media Player 9 → Microsoft DirectX 9 → TotalMedia → DTR-100D's Driver.

Parameter	Description
Windows Media Player 9	Before installing DTR-100D's driver, it is necessary to install Windows Media Player 9 and DirectX 9, or higher version for your Operating System.
Microsoft DirectX 9	If your system already has Windows Media Player 9 and DirectX 9, or higher version, you can skip this part of installation.
ArcSoft TotalMedia	This option to install ArcSoft TotalMedia software and this is user interface allow you to access and work with the digital photo, video, recorded TV programs, and music library directly from your TV or home computer.
Driver	To install the DTR-100D's driver.

- 7 -



Note

If you install the DTR-100D with Notebook, please make sure the "Power Saving" function is turned OFF. (The "Power saving" function will lower down the CPU Performance and may effect the DTR-100D's operation). Be sure, if you connect the antenna to the DTR-100D and please adjust it to a better reception angle and location every time.

- 8 -

## 4 User Interface

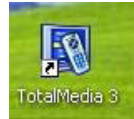
ArcSoft TotalMedia is an all-in-one multimedia application that allows you to access and work with digital photo, home video, recorded TV programs, and your digital music library directly from your TV or home computer.

Note that some versions of TotalMedia may not contain all sections listed on the Help file which depending on the hardware configuration, and the specific version of TotalMedia installed.

### 4.1 Launch TotalMedia Monitor

There are three methods to launch your TotalMedia Monitor:

1. Double-click Desktop Icon "TotalMedia 3".

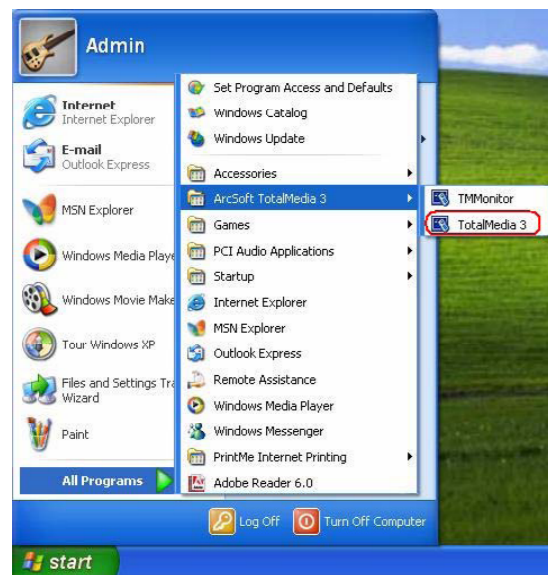


2. Double-click Tray Bar icon "TotalMedia Monitor".



- 9 -

3. From **Start/All Program/ArcSoft TotalMedia 3/TotalMedia 3**.



- 10 -

### 4.2 Main Monitor

After launch your TotalMedia Monitor, it is divided into the main sections as **TV**, **Picture**, **Music**, **Video**, and **Setup**.

You will see the screen as below:



- 11 -

Parameter	Description
TV	This section allows you view and edit the settings for TV Recording.
Picture	This section allows you view photos stored within any folder on your computer.
Music	Allow you to listen, record, and transfer music files.
Video	This section allows you to play video files stored on your computer.
Setup	Allow you configure the basic settings for each module of the program

## 5 Further Information

If you still have any problem on connecting, please check user's manual on the bundled CD for detail configuration.

If you have any other questions, please contact the dealer where you purchased this product or you can contact PLANET directly at the following email address: [support@planet.com.tw](mailto:support@planet.com.tw)

- 12 -



## DVB-T USB2.0 Digital TV Receiver

DTR-100D Bring You Digital TV Anywhere & Anytime



### Quick Installation Guide