

Package Content:

ANT-OM5A x 1

When you open the package, you will find the ANT-OM5A, if anything miss, please contact with your dealer.

Installation Steps:

1. Please remove the Antenna from package box and check the appropriate location with flat surface for installation.
2. Please make sure the cable is no tangled before installation.
3. Be carefully replacing existing Antenna with ANT-OM5A from Access Point/Router device; please see the Figure 1, 2, 3 for installation procedure.

- 1 -

Check the connector mating between Antenna and your device if your connector isn't the same as shown in Figure1.

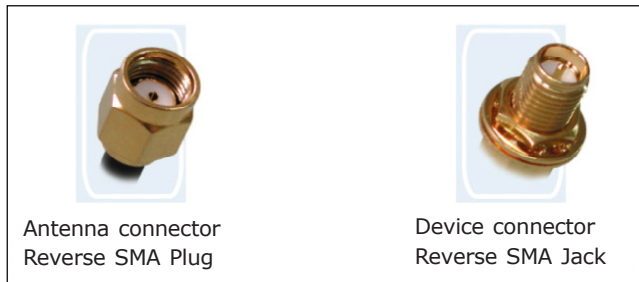


Figure1

Remove existing Antenna

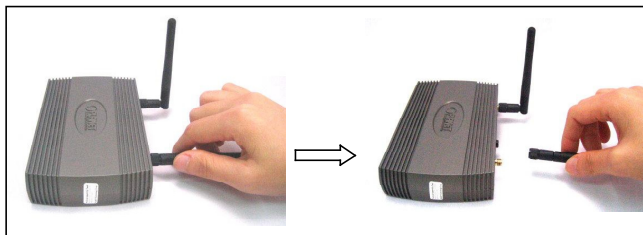


Figure 2

- 3 -

Install ANT-OM5A

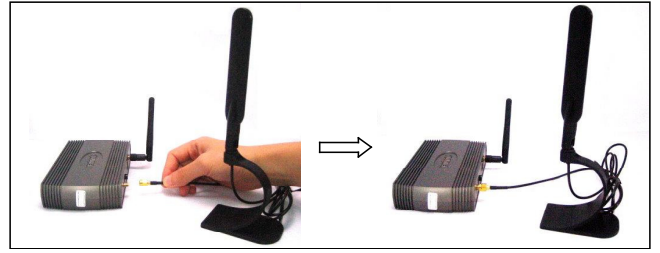


Figure 3

4. Adjust the Antenna direction for appropriate performance. (Figure 4)

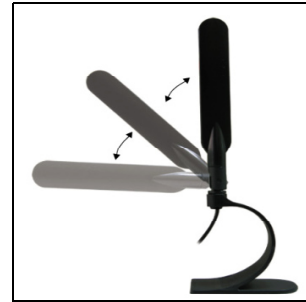


Figure 4

- 2 -



Note

1. The Antenna performance is related to different environments or applications.
2. Affect Antenna performance when the Antenna is behind the Cabinets or Office equipments.

Specifications:

- Frequency: 2.4G / 5GHz
- Gain: 3dBi@2.4GHz, 5dBi@5GHz
- VSWR: ≤ 2.0
- Connector: RP-SMA Plug
- Wave impedance: 50 ohm
- Beamwidth Degree:
 - Horz. : 360 degree
 - Vert. : 45 degree @2.4GHz ; 25 degree @5GHz
- Dimensions: 80 x 50 x 220 mm
- Weight: 46g
- Operating Temp: -20°C~65°C

PLANET Technology Corporation

Website: <http://www.planet.com.tw>

Technical Service: support@planet.com.tw

- 4 -