

VERIFY THE CONTENTS INSIDE PACKAGE BOX

The package should contain below items, if any item is missing or damaged, please contact the seller immediately



Quick Guide



VDSL2 Router



CD-ROM



Ethernet Cable



Phone Cable



Power Adapter

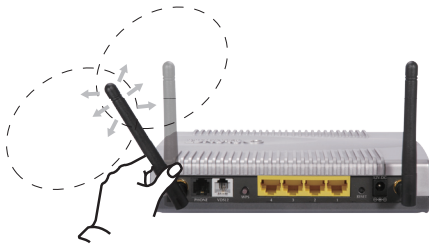


Antenna

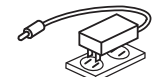
(VC-230N only)

In the following steps, terms of VDSL2 Router will mean the two models – VC-230/VC-230N unless model number is specified; and photo of VC-230N will be used as the photo example.

STEP 1: Locat the VC-230N on an optimum place, install and adjust the antenna for the best coverage



STEP 2: Connect the Power Adapter to VDSL2 Router. Check the PWR LED on the front panel is on accordingly



Power Adapter

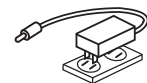
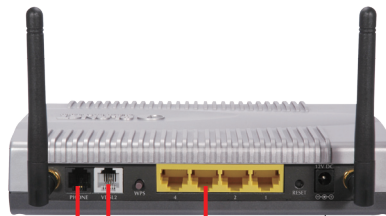
STEP 3: Connect the PC to LAN port. Check the LAN LED on the front panel is on accordingly



Phone



Phone Jack



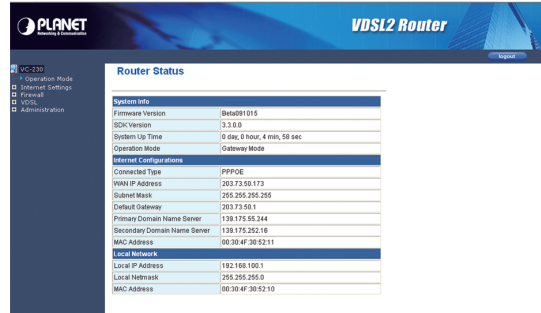
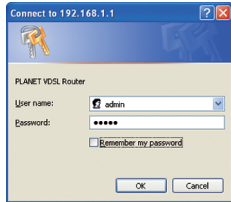
Power Adapter



PC
(DHCP Client or 192.168.1.2)

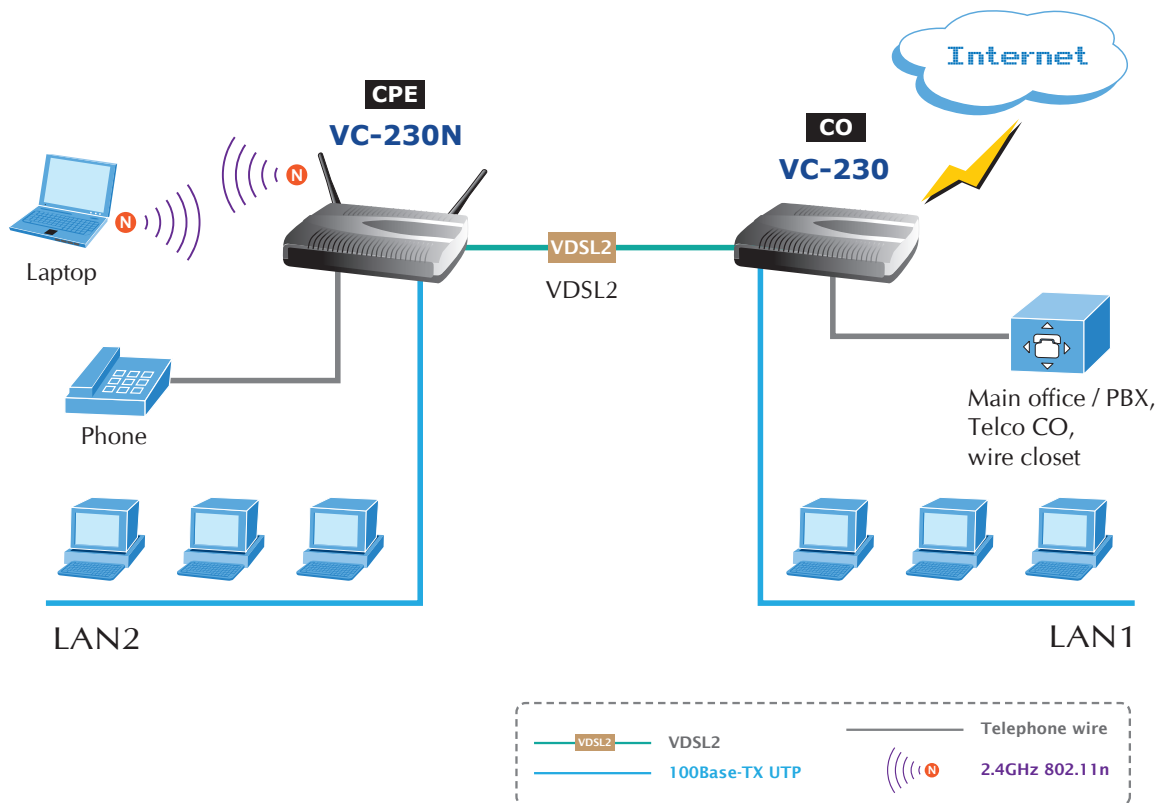
STEP 4: Start up web browser, type the default IP address (<http://192.168.1.1>)

**User name: "admin"
Password: "admin"**



**And now you can manage the VDSL2 Router by its web user interface.
Please refer to the User's Manual in CD-ROM for more information**

APPLICATION



FURTHER INFORMATION :

The above steps introduce simple installations and connections for VDSL2 Router. For further configurations of WAN, LAN, Firewall, Virtual Server, DMZ, DDNS, and VDSL2 operation mode, please refer to the User's Manual in the CD. If you have other questions, please contact the local dealer where you purchased this product.