

802.11a/n Wireless LAN Outdoor CPE AP/Router

WNAP-7200

Quick Installation Guide

Table of Contents

1. Package Content	4
2. Hardware Installation	5
3. Web Configuration	9
4. Further Configuration	10

Designed with the most innovative 802.11a/n technology, WNAP-7200 provides maximum 150Mbps high data rate for outdoor environment. There are multiple operating modes supported in WNAP-7200: Bridge, Gateway, WISP, and built-in 18dBi flat panel antenna and high transmit output power make WNAP-7200 a suitable CPE solution for widely open space applications such as WISP, campuses, and airports. Except for 64/128-bit WEP encryption, WNAP-7200 integrates WPA, WPA2 and 802.1x authentication to secure the information of your wireless LAN.

1. Package Content

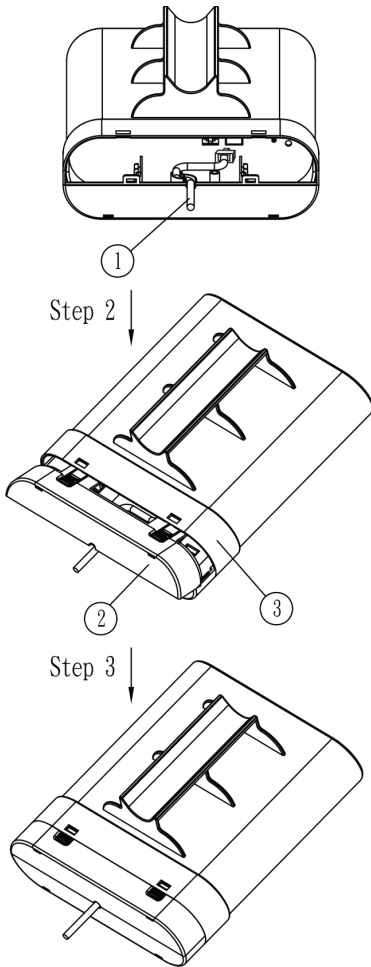
- WNAP-7200 x 1
- PoE Injector x 1
- Power Adapter x 1
- Mounting Kit x 1
- CD x 1
- Quick Installation Guide x 1



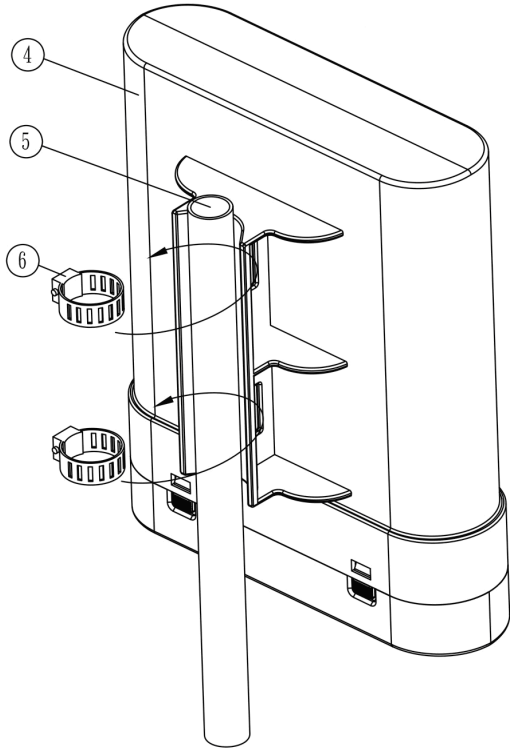
Note

If any of the above items are missing or damaged, contact your local dealer for support.

2. Hardware Installation



- ① RJ-45 Cable
- ② Back Cover
- ③ Front Cover
- ④ WNAP-7200
- ⑤ POLE 1" ~ 1.5"
- ⑥ Mounting Kit



Before you proceed with the installation, it is necessary that you have enough information about WNAP-7200.

1. Please connect right installation "PoE" port of PoE inject to WNAP-7200; "LAN" port of PoE injector to LAN PC, wrong installation will cause the device damage.



Strongly suggest using SFTP cable, for better protection of the data wire. 25-meter SFTP cable also available by order, the part no is CB-STP-25. Please contact with local dealer for more information.

2. Using Category 3 or higher UTP or STP cable, connect the "LAN" port of PoE Injector to a 10Mbps or 10/100Mbps Ethernet hub or switch, and connect the PC on the same LAN for management.
3. Locate an optimum location and use the provided Mounting kit to tie the WNAP-7200 to a pole.



1. To avoid thunder strike, consider installing ELA-100, thunder arrester toward the CPE AP and the PoE injector.
2. For secured reason, while install the CPE AP, please be aware for the electric wires around, and tighten the pole. Without tighten the CPE AP, the pole and the installed site is with electric wire around, there could be danger of being hurt by falling or lethal injury.

4. Connect the 12V 1.25A DC power adapter to the PoE Injector socket, and plug it into an AC outlet to power on the WNAP-7200.



1. The PoE Injector is a passive device. It will inject the DC power into the UTP cable right away once you connect the DC-plug in to the DC-jack of the PoE Injector.
2. DONOT connect the PoE Injector labeled as POE port to any devices but WNAP-7200, otherwise it will damage the device permanently.

5. For Ethernet port application, please refer to user's manual for bridge, gateway and WISP application for the first installation, LAN port is suggested.



1. ONLY use the power adapter supplied with the WNAP-7200. Otherwise, the product may be damaged.
2. Strongly suggest using STP cable whether the cable exposed outdoor for waterproof and avoiding thunder stroke.



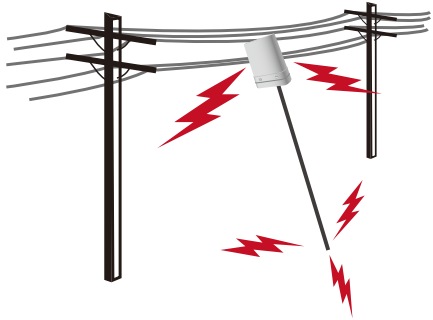
OUTDOOR INSTALLATION WARNING

IMPORTANT SAFETY PRECAUTIONS:

LIVES MAY BE AT RISK! Carefully observe these instructions and any special instructions that are included with the equipment you are installing.

CONTACTING POWER LINES CAN BE LETHAL.

Make sure no power lines are anywhere where possible contact can be made. Antennas, masts, towers, guy wires or cables may lean or fall and contact these lines. People may be injured or killed if they are touching or holding any part of equipment when it contacts electric lines. Make sure there is NO possibility that equipment or personnel can come in contact directly or indirectly with power lines.



Assume all overhead lines are power lines.

The horizontal distance from a tower, mast or antenna to the nearest power line should be at least twice the total length of the mast/antenna combination. This will ensure that the mast will not contact power if it falls either during installation or later.

TO AVOID FALLING, USE SAFE PROCEDURES WHEN WORKING AT HEIGHTS ABOVE GROUND.

Select equipment locations that will allow safe, simple equipment installation.

- Don't work alone. A friend or co-worker can save your life if an accident happens.
- Use approved non-conducting ladders and other safety equipment. Make sure all equipment is in good repair.
- If a tower or mast begins falling, don't attempt to catch it. Stand back and let it fall.
- If anything such as a wire or mast does come in contact with a power line, **DON'T TOUCH IT OR ATTEMPT TO MOVE IT.** Instead, save your life by calling the power company.
- Don't attempt to erect antennas or towers on windy days.

MAKE SURE ALL TOWERS AND MASTS ARE SECURELY GROUNDED, AND ELECTRICAL CABLES CONNECTED TO ANTENNAS HAVE LIGHTNING ARRESTORS.

This will help prevent fire damage or human injury in case of lightning, static build-up, or short circuit within equipment connected to the antenna.

- The base of the antenna mast or tower must be connected directly to the building protective ground or to one or more approved grounding rods, using 1 OAWG ground wire and corrosion-resistant connectors.
- Refer to the National Electrical Code for grounding details.

IF A PERSON COMES IN CONTACT WITH ELECTRICAL POWER, AND CANNOT MOVE:

- **DON'T TOUCH THAT PERSON, OR YOU MAY BE ELECTROCUTED.**
- Use a non-conductive dry board, stick or rope to push or drag them so they no longer are in contact with electrical power.
- Once they are no longer contacting electrical power, administer CPR if you are certified, and make sure that emergency medical aid has been requested.

3. Web Configuration

WNAP-7200 provides a user friendly interface for users to configure via web browser. Please follow the below steps to configure WNAP-7200 basic settings.

1. It will take around 40 seconds to complete the boot up sequence after power on from PoE.
2. Open your web browser and type default IP address of WNAP-7200 (**http://192.168.0.1**) into the "Address Field" of you web browser. Before configuration, please make sure your PC's IP address is under the same IP range with WNAP-7200, such as 192.168.0.x.
3. After entering, fill the default username/password (**admin / admin**) and then you can see the home page.



4. Further Configuration

For more settings of WNAP-7200, please refer to the user's manual in the CD. If you have any difficulty on resolving the problem while installing or using the device, please feel free to contact your local dealer or PLANET Technical Support.

This page is intentionally left blank

This page is intentionally left blank