

**24-Port 10/100Mbps + 4 Gigabit TP/SFP Combo**

**Industrial Managed Ethernet Switch**

**IGSW-2840**

Quick Installation Guide

# Table of Contents

1. Package Content.....	3
2. Requirements .....	4
3. Terminal Setup .....	5
4. Logon to the Console .....	7
5. Configure IP address.....	8
6. Start Web Management.....	11
7. IP Address be changed and forgotten admin password.....	15
Customer Support .....	16

---

## 1. Package Content

Thank you for purchasing PLANET Layer 2 Industrial Managed Ethernet Switch – IGSW-2840. Terms of “**Industrial Managed Switch**” means the Switch mentioned titled in the cover page of this Quick Installation Guide.

Open the box of the **Industrial Managed Switch** and carefully unpack it. The box should contain the following items:

- The IGSW-2840 Industrial Managed Ethernet Switch x 1
- User’s Manual CD x 1
- Quick Installation Guide x 1
- RS232 Cable x 1
- Rubber Feet x 4
- Two Rack-Mounting brackets with attachment screws x 1
- Power Cord x 1

If any item is found missing or damaged, please contact your local reseller for replacement.

## 2. Requirements

- Workstations of subscribers running Windows 98/ME, NT4.0, 2000/XP, MAC OS9 or later, Linux, UNIX or other platform compatible with TCP/IP protocols.
- Workstation installed with Ethernet NIC (Network Card)
- Serial Port connect (Terminal)
  - ◆ Above PC with COM Port(DB-9)
- Ethernet Port connect
  - ◆ Network cables - Use standard network (UTP) cables with RJ45 connectors.
  - ◆ Above PC installed with WEB Browser and JAVA runtime environment Plug-in

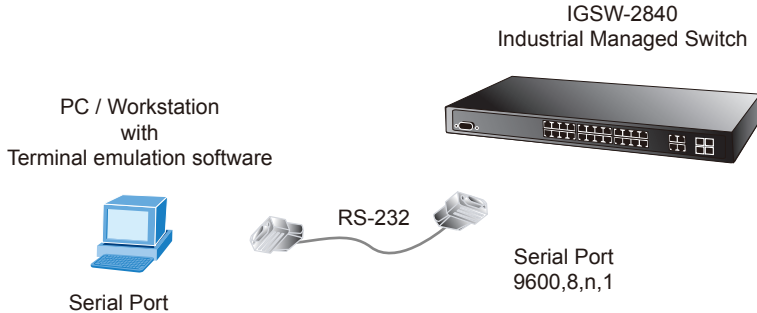


### Note

It is recommended to use Internet Explore 6.0 or above to access IGSW-2840 Industrial Managed Switch.

### 3. Terminal Setup

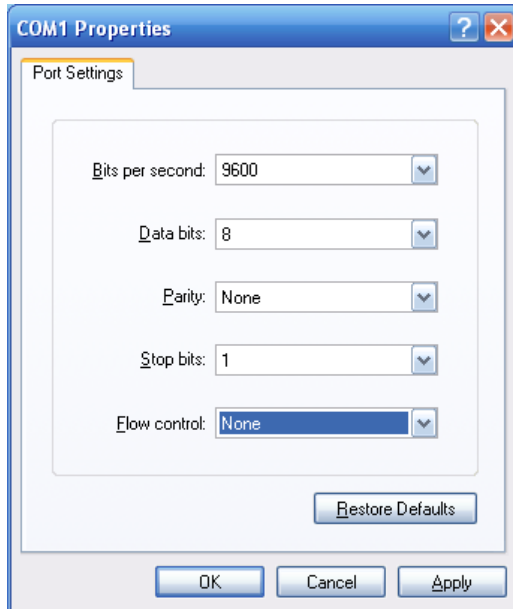
To configure the system, connect a serial cable to a **COM port** on a PC or notebook computer and to serial (console) port of the Industrial Managed Switch. The console port of the IGSW-2840 is DCE already, so that you can connect the console port directly through PC without the need of Null Modem.



A terminal program is required to make the software connection to the Industrial Managed Switch. Windows' **Hyper Terminal** program will be a good choice. The Hyper Terminal can be accessed from the **Start** menu.

1. Click **START**, then **Programs, Accessories** and then **Hyper Terminal**.
2. When the following screen appears, make sure that the COM port should be configured as:

- ◆ Baud : 9600
- ◆ Parity : None
- ◆ Data bits : 8
- ◆ Stop bits : 1
- ◆ Flow Control : None



## 4. Logon to the Console

Once the terminal has connected to the device, power on the Industrial Managed Switch, The self testing procedures will display on the monitor thought by the terminal.

Then, the following message will ask the login user name and password. The factory default user name and password as following, and the login screen in Figure 4-1 appears.

User name: **admin**  
Password: **admin**

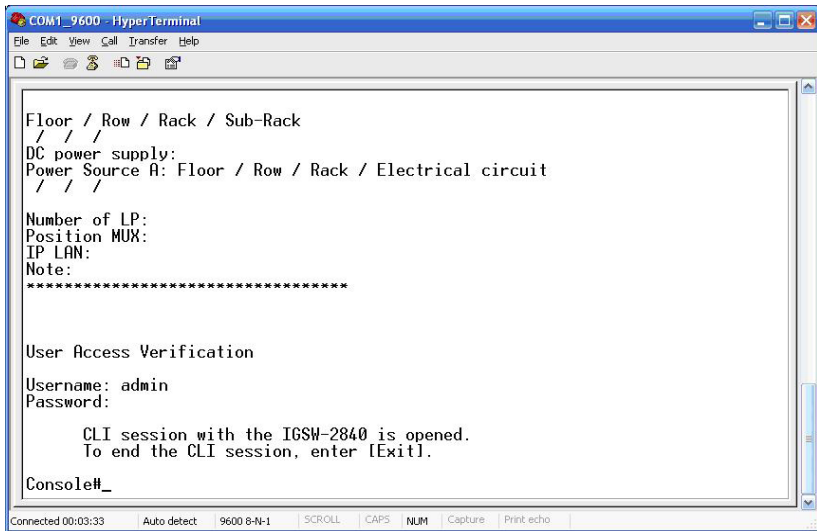


Figure 4-1 IGSW-2840 Industrial Managed Switch Console Login Screen



### Note

1. For security reason, please remember to change new password to prevent anyone try to access it.
2. Only accept lowercase letter for commanding under console interface.

## 5. Configure IP address

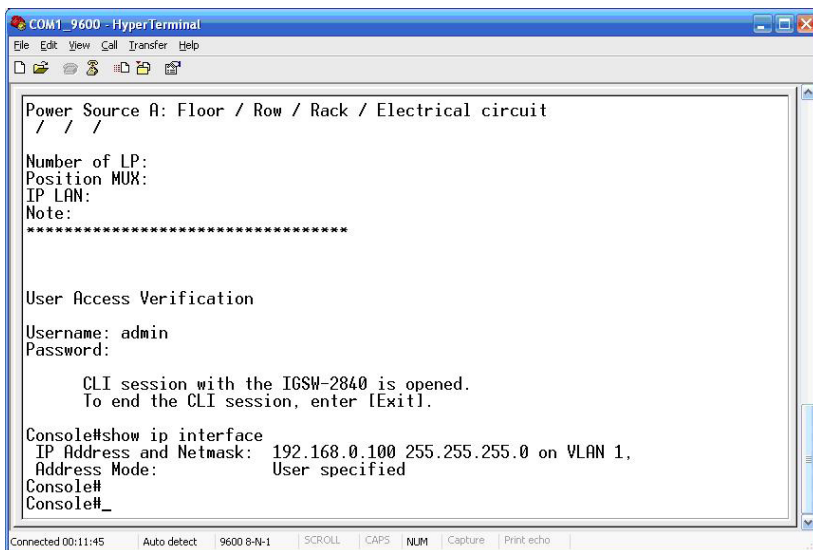
The Industrial Managed Switch is shipped with default IP address as following.

IP Address : **192.168.0.100**  
Subnet Mask : **255.255.255.0**

To check the current IP address or modify a new IP address for the Industrial Managed Switch, please follow the procedures as below:

### ■ Show the current IP address

1. On "**Console#**" prompt, enter "**show ip interface**".
2. The screen displays the current IP address, Subnet Mask and Gateway. As show in Figure 5-1.



```
Power Source A: Floor / Row / Rack / Electrical circuit
/ / /
Number of LP:
Position MUX:
IP LAN:
Note:
*****

User Access Verification
Username: admin
Password:

      CLI session with the IGSW-2840 is opened.
      To end the CLI session, enter [Exit].

Console#show ip interface
IP Address and Netmask: 192.168.0.100 255.255.255.0 on VLAN 1,
Address Mode:          User specified
Console#
Console#_
```

Figure 5-1 Show IP Information Screen



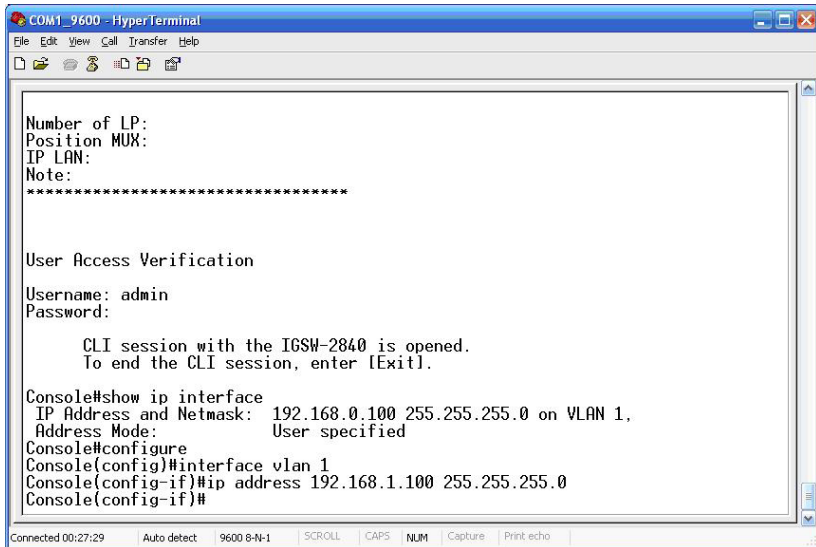
## ■ Configure IP address

3. On "**Console#**" prompt, type "**configure**" to enter the configuration Mode.
4. On "**Console (config)#**" prompt, enter the following command and press **<Enter>**. As show in Figure 5-2.

```
Console(config)# interface vlan 1  
Console(config-if)# ip address 192.168.1.100 255.255.255.0
```

The command will be applied and make the default settings of IP address and Subnet Mask to the following as below.

**IP: 192.168.1.100**  
**Subnet Mask: 255.255.255.0**



```
COM1_9600 - HyperTerminal
File Edit View Call Transfer Help
Number of LP:
Position MUX:
IP LAN:
Note:
*****

User Access Verification
Username: admin
Password:

      CLI session with the IGSW-2840 is opened.
      To end the CLI session, enter [Exit].

Console#show ip interface
IP Address and Netmask: 192.168.0.100 255.255.255.0 on VLAN 1,
Address Mode:          User specified
Console#configure
Console(config)#interface vlan 1
Console(config-if)#ip address 192.168.1.100 255.255.255.0
Console(config-if)#

Connected 00:27:29  Auto detect  9600 8-N-1  SCROLL  CAPS  NUM  Capture  Print echo
```

**Figure 5-2** Set IP Address Screen

## ■ Save the Configuration

If want to save the configuration permanently, must copy the configuration to the non-volatile memory.

5. On "Console#" prompt, type the following command and press <Enter>.

```
Console#copy running-config startup-config
```

After press the <Enter> button and system will request to give the file name or just press <Enter> for default name.

6. Try to re-start the switch and follow the step 1 to check if the IP address has been changed.

If the IP is successfully configured and saved, the Industrial Managed Switch will apply the new IP address setting immediately. You can access the web interface of Industrial Managed Switch through the new IP address.



Note

If you do not familiar with console command or the related parameter, enter "**help**" anytime in console to get the help description.

## 6. Start Web Management

The following description shows how to startup the **Web Management** of Industrial Managed Switch.



Note

The IGSW-2840 Industrial Managed Ethernet Switch is configured through an Ethernet connection, please make sure the manager PC must be set on the same **IP subnet address**.

For example, the default IP address of the Industrial Managed Switch is **192.168.0.100**, then the manager PC should be set at **192.168.0.x** (where x is a number between 1 and 254, except 100), and the default subnet mask is 255.255.255.0.

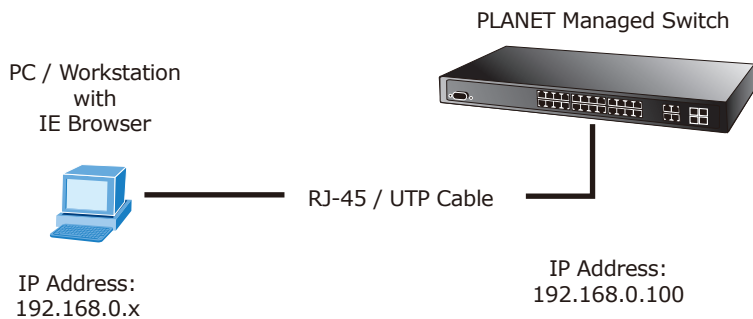


Figure 6-1 IP Management Diagram

## ■ Login the Industrial Managed Switch

1. Use Internet Explorer 6.0 or above Web browser, enter IP address **http://192.168.0.100** (the factory-default IP address or that you have just changed in console) to access the Web interface.
2. When the following dialog box appears, please enters the default user name **"admin"** and password **"admin"** (or the username/password you have changed via console). The login screen in Figure 6-2 appears.

Default User name: **admin**

Default Password: **admin**

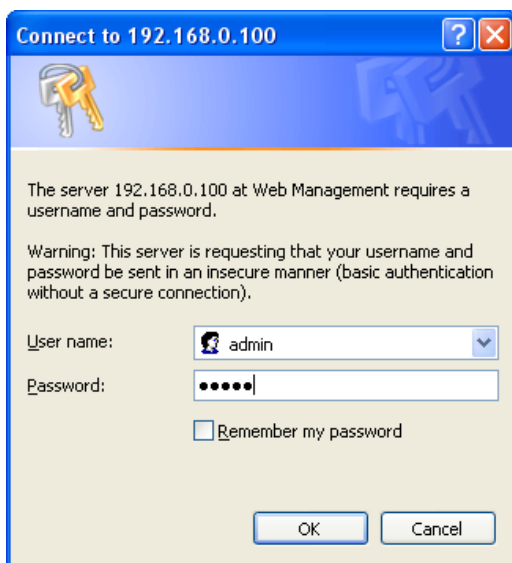


Figure 6-2 Login Screen

3. The main screen appears after entering the username and password, as Figure 6-3.

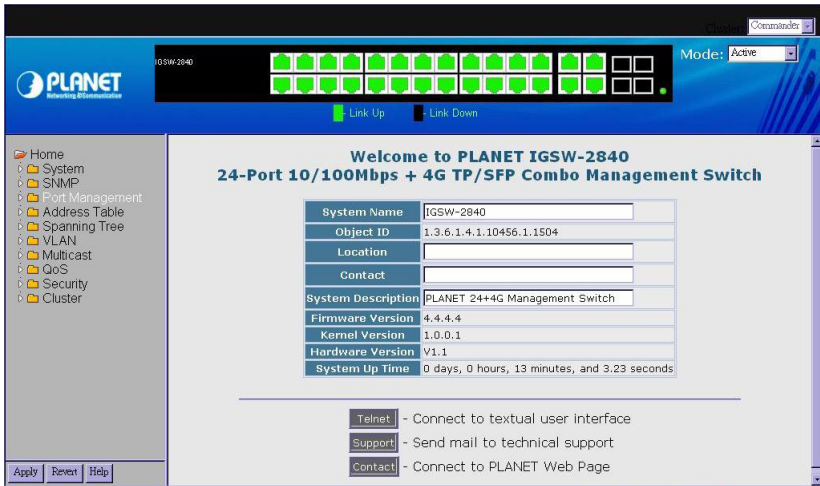


Figure 6-3 Web Main Screen of Industrial Managed Switch

4. Now, you can use the Web management interface to continue the switch management. The Switch Menu on the left of the web page let you access all the commands and statistics the switch provides. Please refer to the user manual for more.

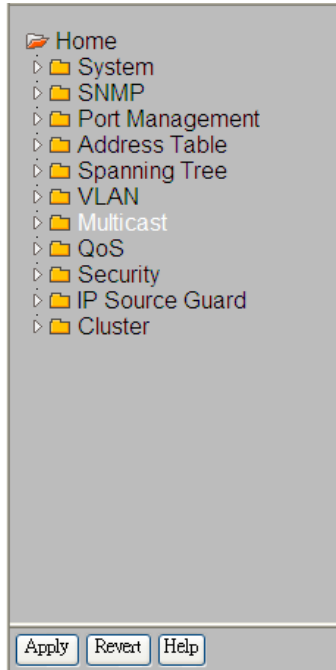


Figure 6-4 Switch Menu



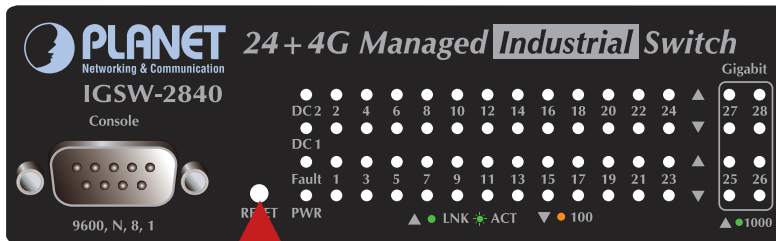
Note

If you do not familiar with switch functions or the related parameter, press **"Help icon"** anytime in right-top of the web page to get the help description.

## 7. IP Address be changed and forgotten admin password

To reset the IP address to the default IP Address "192.168.0.100" or reset the login account and password to default value. Press the hardware **Reset Button** at the front panel about **5 seconds**. After the device is rebooted, the User name, Password and IP Address change back to the default.

User Name: "admin"  
Password: "admin"  
IP address: "192.168.0.100"



Reset

---

## ***Customer Support***

Thank you for purchase PLANET products. You can browse our online FAQ resource at the PLANET web site first to check if it could solve you issue. If you need more support information, please contact PLANET switch support team.

PLANET online FAQ :

<http://www.planet.com.tw/en/support/faq.php>

Switch support team mail address:

[support\\_switch@planet.com.tw](mailto:support_switch@planet.com.tw)

Copyright © PLANET Technology Corp. 2010.

Contents are subject to change without prior notice.

PLANET is a registered trademark of PLANET Technology Corp.

All other trademarks belong to their respective owners.