

VDL-2420MR / VDL-2420MR48

24-Port VDSL2 IP DSLAM

Quick Installation Guide

Table of Contents

1. Package Content.....	3
2. Requirements	4
3. Terminal Setup	5
4. Logon to the Console	7
5. Configure IP address.....	8
6. Start Web Management.....	11
7. While IP Address be changed or forgotten admin password –	14
8. Customer Support	15

1. Package Content

Thank you for purchasing PLANET 24-Port VDSL2 IP DSLAM, **VDL-2420MR / VDL-2420MR48**. Terms of "**VDSL2 IP DSLAM**" means the VDSL2 IP DSLAM mentioned titled in the cover page of this Quick Installation Guide.

Upon open the box of the VDSL2 IP DSLAM and carefully unpack it. The box should contain the following items:

- The VDSL2 IP DSLAM x 1
- This Quick Installation Guide x 1
- User's Manual CD x 1
- Power Cord x 1 (except VDL-2420MR48)
- RS-232 DB9 Male Console Cable x 1
- Rubber Feet x 4
- Two Rack-mounting Brackets with Attachment Screws x 1 set
- 2 Meters Telco-50 cable

If any item is found missing or damaged, please contact your local reseller for replacement.



Note

VDL-2420MR / VDL-2420MR48 come with one power system by default. The power slot 2 is vacant slot and can be installed with VC-RPS200 or VC-RPS48, please consult your local dealer for the order information.

2. Requirements

The VDSL2 IP DSLAM provide remote Web interface for manage; the following equipments are necessary for further management.

- **Workstation** installed with Ethernet NIC (Network Interface Card)
- Workstations of subscribers running Windows XP/2003, Vista, Windows 7, MAC OS X, Linux, Fedora, Ubuntu or other platform compatible with TCP/IP protocols.
- **Ethernet Port** connect
 - Network cables - use standard network (UTP) cables with RJ45 connectors.
 - Above Workstation installed with WEB Browser and JAVA runtime environment Plug-in
- Serial Port connect
 - Above PC with COM Port (DB9 / RS-232) or USB-to-RS-232 converter



Note

It is recommended to use Internet Explore 6.0 or above to access the VDSL2 IP DSLAM.

3. Terminal Setup

To configure the system, connect a serial cable to a **COM port** on a PC or notebook computer and to serial (console) port of the VDSL2 IP DSLAM. The console port of the VDSL2 IP DSLAM is DCE already, so that you can connect the console port directly through PC without the need of Null Modem.



Figure 3-1 Serial / Console Connection

A terminal program is required to make the software connection to the VDSL2 IP DSLAM. Windows' **Hyper Terminal** program may be a good choice. The Hyper Terminal can be accessed from the **Start** menu.

1. Click **START**, then **Programs, Accessories** and then **Hyper Terminal**.
2. When the following screen appears, make sure that the COM port should be configured as:

- ◆ **Baud** : **57600**
- ◆ **Parity** : **None**
- ◆ **Data bits** : **8**
- ◆ **Stop bits** : **1**
- ◆ **Flow Control** : **None**

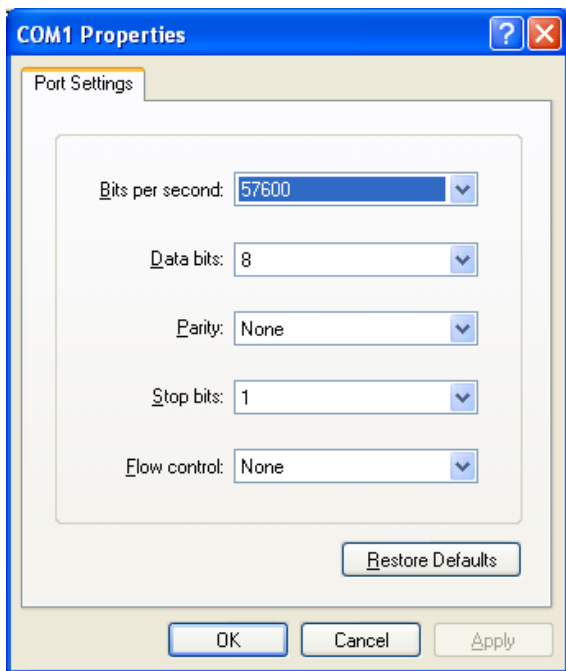


Figure 3-2 Hyper Terminal Setting

4. Logon to the Console

Once the terminal has connected to the device, power on the VDSL2 IP DSLAM, the terminal will display that it is running testing procedures.

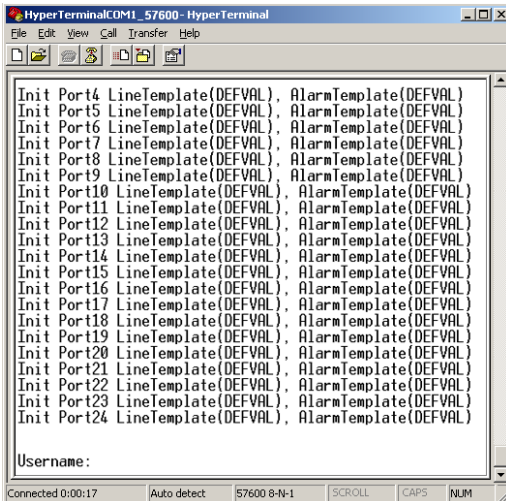


In the following sections, the console and Web screen are based on VDL-2420MR, for VDL-2420MR48 the display will be the same to VDL-2420MR.

Then, the following message asks the login user name and password. The factory default password as following and the login screen in [Figure 4-1](#) appears.

User Name: **admin**

Password: **admin**



```
HyperTerminalCOM1_57600 - Hyper Terminal
File Edit View Call Transfer Help
Init Port4 LineTemplate(DEFVAL), AlarmTemplate(DEFVAL)
Init Port5 LineTemplate(DEFVAL), AlarmTemplate(DEFVAL)
Init Port6 LineTemplate(DEFVAL), AlarmTemplate(DEFVAL)
Init Port7 LineTemplate(DEFVAL), AlarmTemplate(DEFVAL)
Init Port8 LineTemplate(DEFVAL), AlarmTemplate(DEFVAL)
Init Port9 LineTemplate(DEFVAL), AlarmTemplate(DEFVAL)
Init Port10 LineTemplate(DEFVAL), AlarmTemplate(DEFVAL)
Init Port11 LineTemplate(DEFVAL), AlarmTemplate(DEFVAL)
Init Port12 LineTemplate(DEFVAL), AlarmTemplate(DEFVAL)
Init Port13 LineTemplate(DEFVAL), AlarmTemplate(DEFVAL)
Init Port14 LineTemplate(DEFVAL), AlarmTemplate(DEFVAL)
Init Port15 LineTemplate(DEFVAL), AlarmTemplate(DEFVAL)
Init Port16 LineTemplate(DEFVAL), AlarmTemplate(DEFVAL)
Init Port17 LineTemplate(DEFVAL), AlarmTemplate(DEFVAL)
Init Port18 LineTemplate(DEFVAL), AlarmTemplate(DEFVAL)
Init Port19 LineTemplate(DEFVAL), AlarmTemplate(DEFVAL)
Init Port20 LineTemplate(DEFVAL), AlarmTemplate(DEFVAL)
Init Port21 LineTemplate(DEFVAL), AlarmTemplate(DEFVAL)
Init Port22 LineTemplate(DEFVAL), AlarmTemplate(DEFVAL)
Init Port23 LineTemplate(DEFVAL), AlarmTemplate(DEFVAL)
Init Port24 LineTemplate(DEFVAL), AlarmTemplate(DEFVAL)
Username:
```

Connected 0:00:17 Auto detect 57600 8-N-1 SCROLL CAPS NUM

Figure 4-1 VDL-2420MR Console Login Screen



1. For security reason, please change and memorize the new password after this first setup.
2. Only accept command in lowercase letter under console interface.

5. Configure IP address

The VDSL2 IP DSLAM is shipped with default IP address as following.

IP Address: **192.168.0.100**

Subnet Mask: **255.255.255.0**

To check the current IP address or modify a new IP address for the VDSL2 IP DSLAM, please use the procedures as follow:

■ Show the current IP address

1. On "**Switch#**" prompt, enter "**configure**"
2. On "**Switch(config)#**" prompt, enter "**show ip**".
3. The screen displays the current IP address, Subnet Mask and Gateway. As show in [Figure 5-1](#).

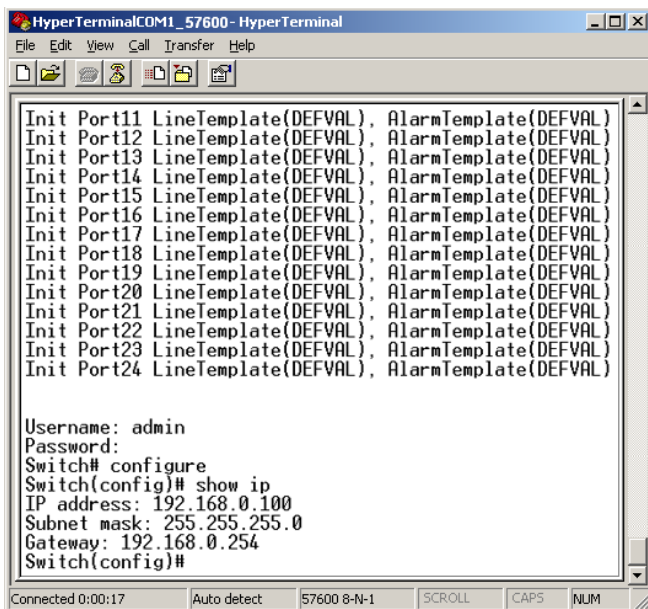


Figure 5-1 Show IP Information Screen

■ Configure IP address and Default Gateway

- On “**Switch(config)#**” prompt, enter the following command and press <Enter>. As show in [Figure 5-2](#).

```
Switch(config)# ip address 192.168.1.100 255.255.255.0
```

```
Switch(Config)# ip default-gateway 192.168.1.254
```

The previous command would apply the follow settings for the VDSL2 IP DSLAM.

IP Address: 192.168.1.100

Subnet Mask: 255.255.255.0

Gateway: 192.168.1.254

```

HyperTerminal: LUM1_5/600 - HyperTerminal
File Edit View Call Transfer Help

Init Port18 LineTemplate(DEFVAL), AlarmTemplate(DEFVAL)
Init Port19 LineTemplate(DEFVAL), AlarmTemplate(DEFVAL)
Init Port20 LineTemplate(DEFVAL), AlarmTemplate(DEFVAL)
Init Port21 LineTemplate(DEFVAL), AlarmTemplate(DEFVAL)
Init Port22 LineTemplate(DEFVAL), AlarmTemplate(DEFVAL)
Init Port23 LineTemplate(DEFVAL), AlarmTemplate(DEFVAL)
Init Port24 LineTemplate(DEFVAL), AlarmTemplate(DEFVAL)

Username: admin
Password:
Switch# configure
Switch(config)# show ip
IP address: 192.168.0.100
Subnet mask: 255.255.255.0
Gateway: 192.168.0.254
Switch(config)# ip address 192.168.1.100 255.255.255.0
Switch(config)# ip default-gateway 192.168.1.254
Switch(config)# show ip
IP address: 192.168.1.100
Subnet mask: 255.255.255.0
Gateway: 192.168.1.254
Switch(config)# copy running-config startup-config
Switch(config)# _

```

Connect: 0:00:17 Auto detect 57600 0-V-1 SCROLL CAPS NUM

Figure 5-2 Set IP Address Screen

- Repeat Step 1-3 to check if the IP address is changed.
- **Store current configuration**
- On “**Switch(config)#**” prompt, enter the following command and press **<Enter>**.

Switch(config)# copy running-config startup-config

If the IP address is successfully configured, the VDSL2 IP DSLAM will apply the new IP address setting immediately. You can access the Web interface of the VDSL2 IP DSLAM through the new IP address.



- System will use previous setting if you did not copy the running-config to startup-config.
- If you do not familiar with console command, enter “**help**” anytime in console to get the help description.

6. Start Web Management

The VDSL2 IP DSLAM provides a built-in Web browser interface. You can manage it remotely by having a remote host with Web browser, such as Microsoft Internet Explorer, Mozilla Firefox, Google Chrome or Apple Safari.

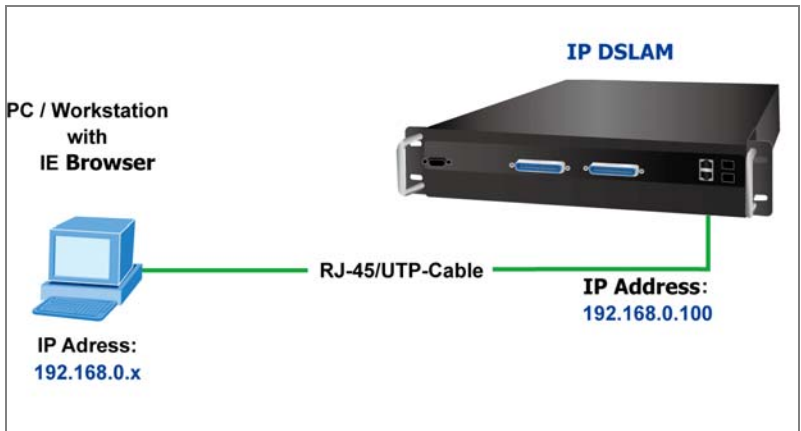


Figure 6-1 IP Management Diagram

The following shows how to startup the **Web Management** of the VDSL2 IP DSLAM, please note, the VDSL2 IP DSLAM is configured through an Ethernet connection, make sure the manager PC must be set on the same **IP subnet address**.

For example, the default IP address of the VDSL2 IP DSLAM is **192.168.0.100**, then the manager PC should be set at 192.168.0.x (where x is a number between 1 and 254, except 100), and the default subnet mask is 255.255.255.0.

Login the VDSL2 IP DSLAM

1. Use Internet Explorer 6.0 or above Web browser, enter IP address **<http://192.168.0.100>** (the factory-default IP address or that you have just changed in console) to access the Web interface.
2. When the following dialog box appears, please enter the default user name "**admin**" and password "**admin**". The login screen in [Figure 6-2](#) appears.

Default IP Address: **192.168.0.100**

Default User Name: **admin**

Default Password: **admin**

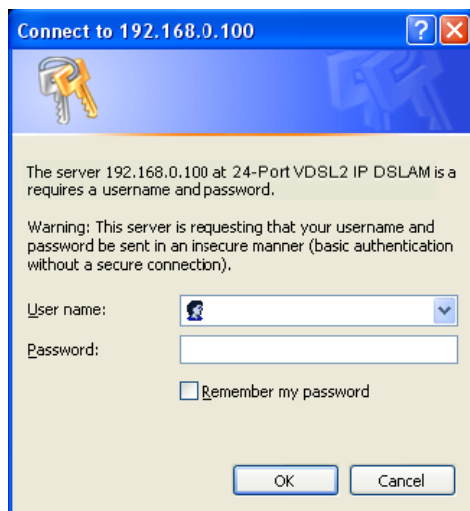


Figure 6-2 Web Login Screen of VDL-2420MR

3. After entering the user name and password, the Web main screen appears as [Figure 6-3](#).

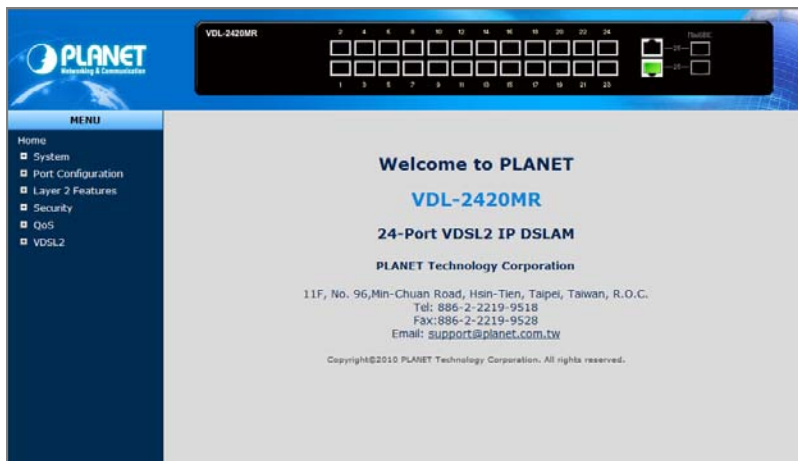


Figure 6-3 Web Main Screen of VDL-2420MR

Now, you can use the Web management interface to continue the VDSL2 IP DSLAM management, please refer to the user manual for more.



For security reason, please change and memorize the new password after this first setup.

7. While IP Address be changed or forgotten admin password –

To reset the IP address to the default IP Address “**192.168.0.100**” and the user name / password to factory default mode (default user name and password are both **admin**). Press the hardware reset button at the front panel about 5 seconds. After the device is rebooted, you can login the management Web interface within the same subnet of 192.168.0.xx and default user name / password. Be noted, all the previous setup will disappeared after factory reset.



Hardware Reset

8. Customer Support

You can browse our online FAQ resource at the PLANET Web site first to check if it could solve you issue. If you need more support information, please contact PLANET switch support team.

PLANET online FAQ :

<http://www.planet.com.tw/en/support/faq.php?type=1>

Switch support team mail address :

support_switch@planet.com.tw

Copyright © PLANET Technology Corp. 2010.
Content subjects to revision without prior notice.

PLANET is a registered trademark of PLANET Technology Corp. All other trademarks belong to their respective owners.

Energy Saving Note of the Device

This power required device does not support Standby mode operation. For energy saving, please remove the power cable to disconnect the device from the power circuit.

Without removing power cable, the device will still consuming power from the power source. In the view of Saving the Energy and reduce the unnecessary power consuming, it is strongly suggested to remove the power connection for the device if this device is not intended to be active.