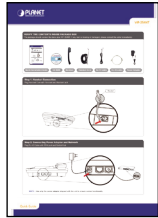


VERIFY THE CONTENTS INSIDE PACKAGE BOX

The package should contain the items plus VIP-254NT. If any item is missing or damaged, please contact the seller immediately.



Quick Installation Guide



CD-ROM



Handset



Handset Core



RJ-11 cable



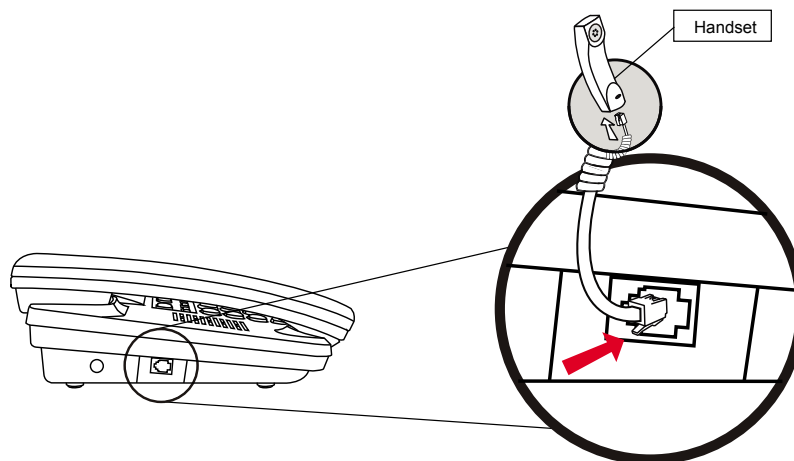
RJ-45 cable



Power Adapter

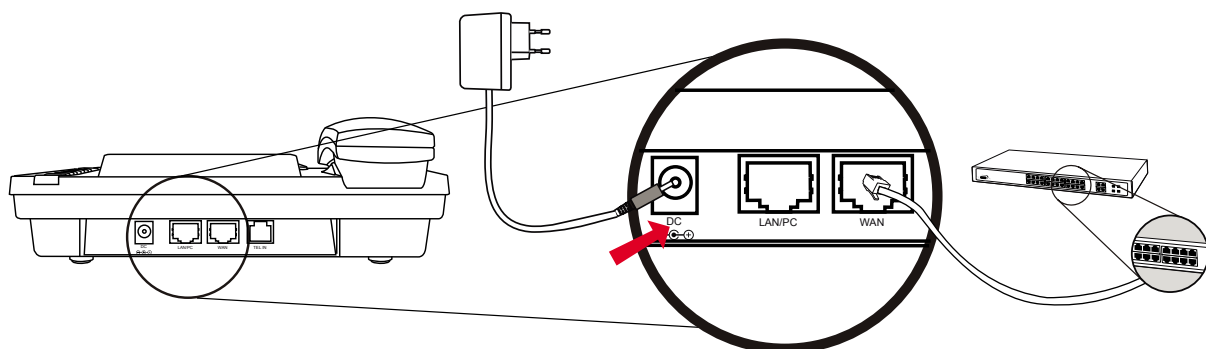
Step 1. Handset Connection

Plug Handset Core with Handset and Handset Jack



Step 2. Connecting Power Adapter and Network

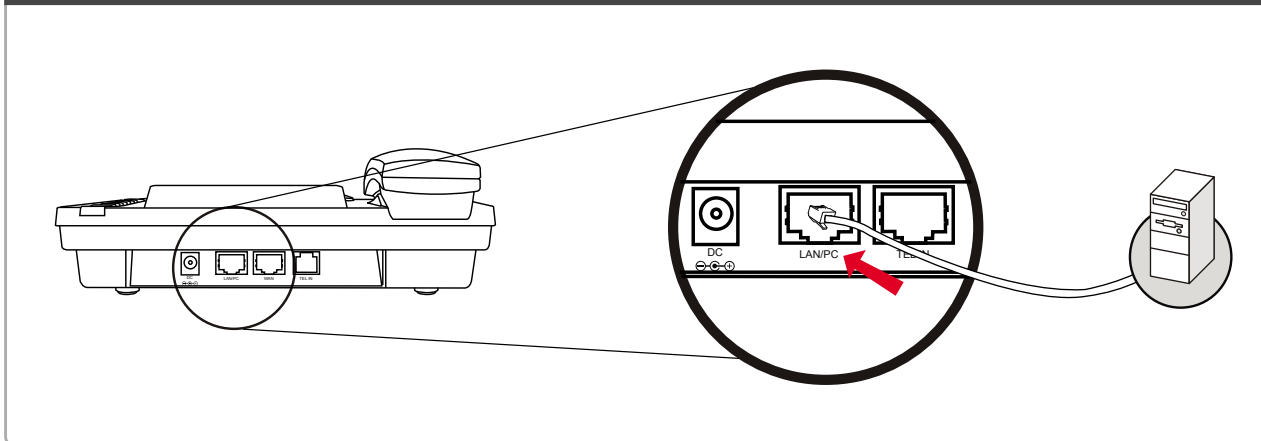
Plug RJ-45 Cable with WAN port and Switch/Hub



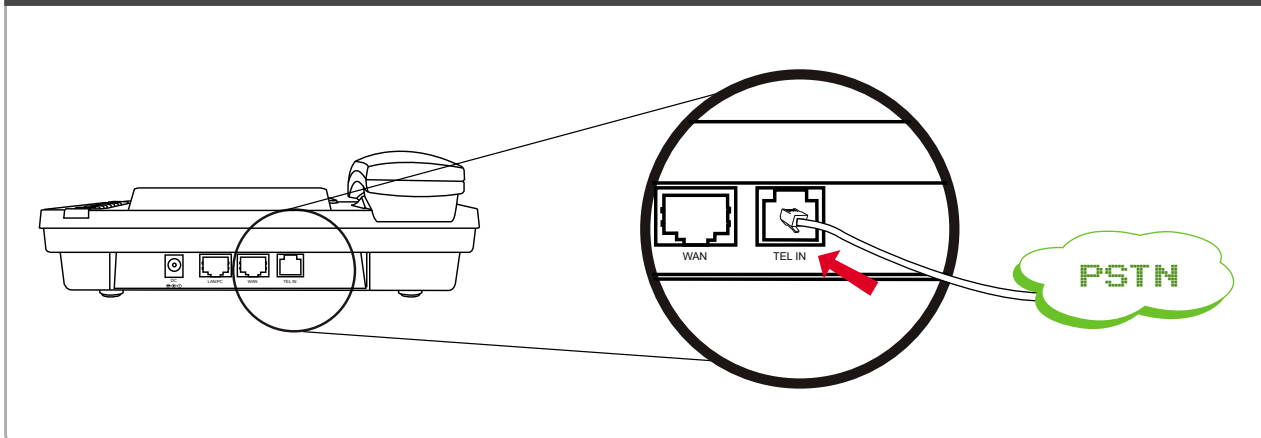
NOTE : Use only the power adapter shipped with the unit to ensure correct functionality

Step 3. Computer Network Setup

Plug RJ-45 Cable with LAN/PC port and Computer


Step 4. Connecting PSTN Line

If there is PSTN line, connect it with TEL IN port


Step 5. Login Prompt

Set your computer's IP address to 192.168.0.x, where x is a number between 2 to 254 (except 1 where is being used for the IP Phone by default). If you don't know how to do this, please ask your network administrator.

Use web browser (Internet Explorer 6.0 or above) to connect to 192.168.0.1 (type this address in the address bar of web browser).

You'll be prompted to input user name and password: **root** / null (without password).

Further Configuration

For detail configuration, please check user's manual on the bundled CD.

If you have any other questions, please contact the dealer where you purchased this product or you can contact PLANET directly at the following email address: support_vip@planet.com.tw