

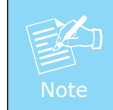
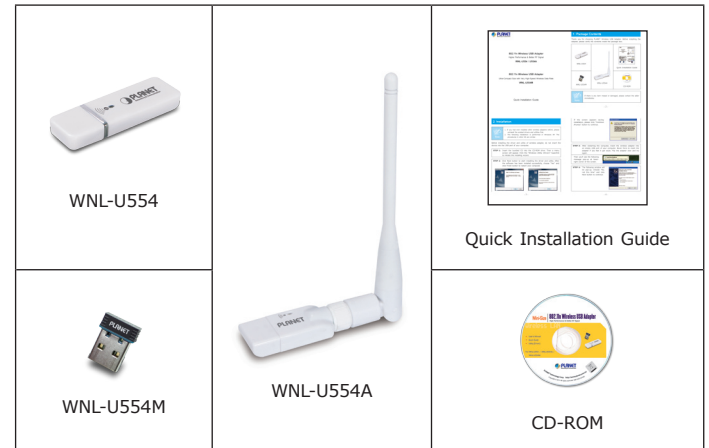
802.11n Wireless USB Adapter
Higher Performance & Better RF Signal
WNL-U554 / U554A

802.11n Wireless USB Adapter
Ultra-Compact Size with Very High-Speed Wireless Data Rate
WNL-U554M

Quick Installation Guide

1. Package Contents

Thank you for choosing PLANET Wireless USB Adapter. Before installing the adapter, please verify the contents inside the package box.



If there is any item missed or damaged, please contact the seller immediately.

- 2 -

2. Installation

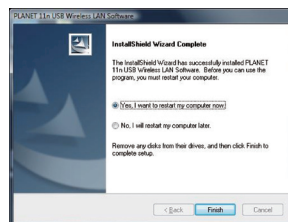
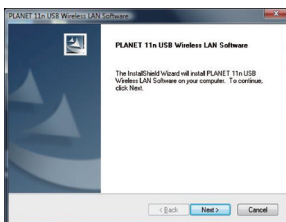


1. If you had ever installed other wireless adapters before, please uninstall the existed drivers and utilities first.
2. The following installation is performed in Windows XP. The procedures in other OS are similar.

Before installing the driver and utility of wireless adapter, do not insert the device into the USB port of your computer.

STEP 1: Insert the bundled CD into the CD-ROM drive. Then a menu screen will appear. Click the "Windows Utility (Driver)" hyperlink to initiate the installing wizard.

STEP 2: Click Next button to start installing the driver and utility. After the software has been installed successfully, choose "Yes" and click Finish button to restart your computer.



- 3 -

If the screen appears during installation, please click "Continue Anyway" button to continue.



STEP 3: After restarting the computer, insert the wireless adapter into an empty USB port of your computer. Never force to insert the adapter if you feel it get stuck. Flip the adapter over and try again.

Then you'll see the following message pop-up at lower-right corner of the screen.

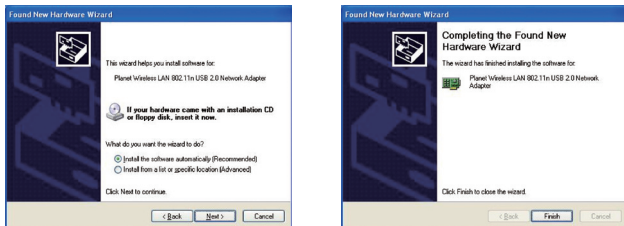


STEP 4: The following window will be pop-up. Choose "No, not this time" and click Next button to continue.



- 4 -

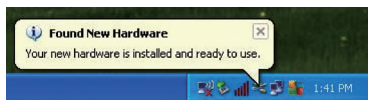
STEP 5: Choose "Install the software automatically (Recommended)", and click Next button to install the driver. In the end, click Finish button.



If the screen appears during installation, please click "Continue Anyway" button to continue.



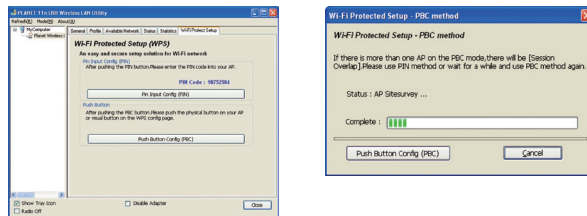
After the driver of wireless adapter has been installed successfully, you'll see another message pop-up at lower-right corner of the screen.



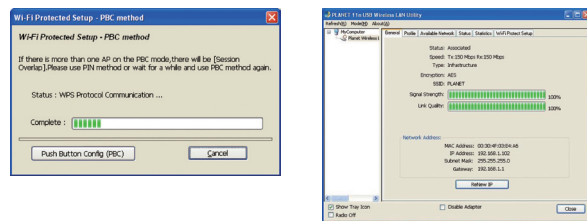
- 5 -

3. Connection Method

Method 1: PLANET WNL-U554/U554A/U554M supports WPS. Choose "Wi-Fi Protect Setup" label, and click "Push Button Config (PBC)" button. When the following window appears, press the WPS button equipped on your AP.

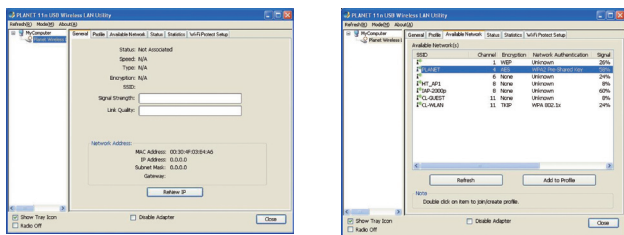


And these two network devices will begin to negotiate with each other. Then you'll connect to the wireless network successfully.

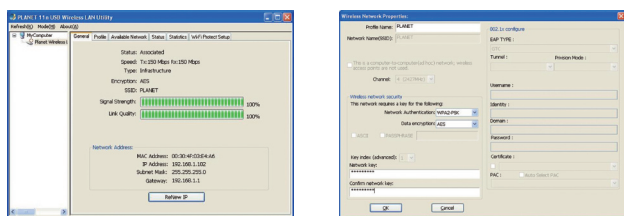


- 6 -

Method 2: You can also configure the wireless network by yourself via PLANET 11n USB Wireless LAN Utility. Choose "Available Network" label to search the available wireless AP, and click twice on the AP you would like to connect.



Key in the password of the wireless AP in the "network key", and confirm it again in the other field. Then click OK button. You'll connect to the wireless network successfully.



- 7 -

4. Further Information

The steps above introduce simple installation for WNL-U554/554A/554M. For further configuration of Wi-Fi Protect Setup (WPS), Software AP etc, please refer to the user's manual in the CD. If you have further questions, please contact the local dealer or distributor where you purchased this product.



2011-E23140-003

- 8 -