

802.11n Multi-Homing Broadband Router

VRT-420N

Quick Installation Guide

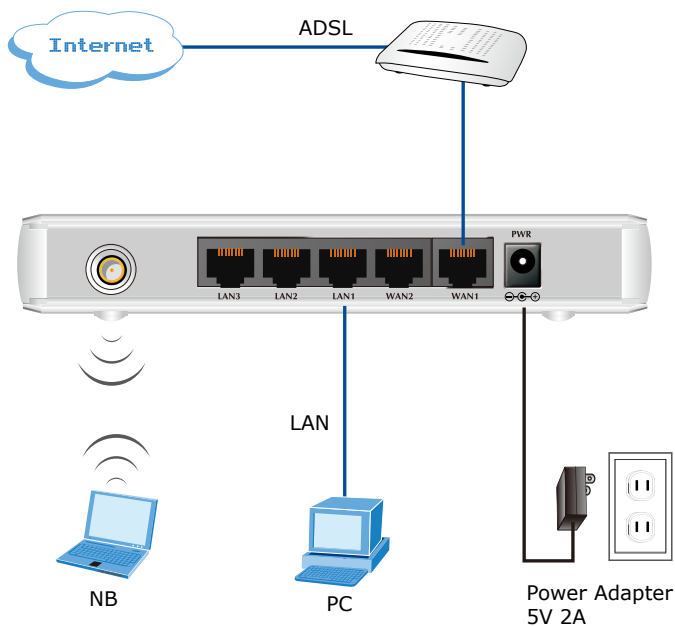
Table of Contents

1. BEFORE STARTING UP.....	3
2. QUICK INSTALLATION	5
Further Information	7

1. BEFORE STARTING UP

This is a step-by-step instruction on how to start up the VRT-420N and get connected to the Internet.

1. Setup your network as shown in the setup diagram below.



2. Then, you need to setup your LAN PC clients so that it can obtain an IP address automatically. By default the VRT-420N's DHCP server is enabled so that you can obtain an IP address automatically.



Note

Please make sure that the VRT-420N's DHCP server is the only DHCP server available on your LAN. If there is another DHCP on your network, then you'll need to switch one of the DHCP servers off.

3. Once your PC has obtained an IP address from your router, enter the default IP address **192.168.0.1** into your PC's web browser and press <enter>. That is, key in <http://192.168.0.1> to the browser's address field.

Default IP Address: **192.168.0.1**

4. The login screen below will appear. Enter the "User Name" and "Password" and then click <OK> to login. The default user name is "**admin**" and password is "**admin**".

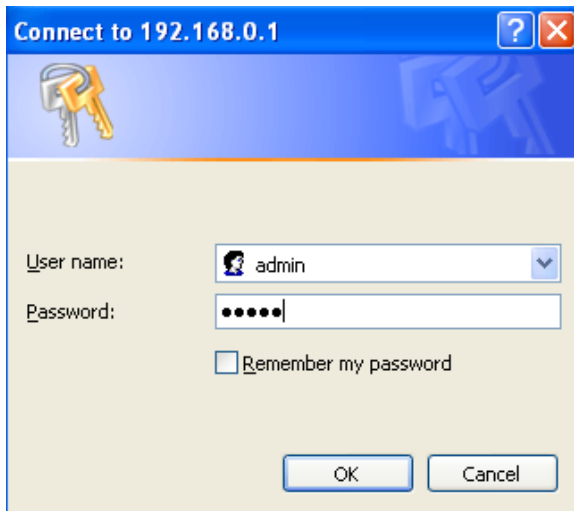


Note

For security reasons it is recommended to change the password at the first login and memorize it.

Default User Name: **admin**

Default Password: **admin**



Connect to 192.168.0.1

User name: admin

Password: ●●●●●●

Remember my password

OK Cancel

Select the section you wish to configure and proceed to the corresponding chapter. Use the selections on the web management's to navigate around the web-based management User Interface.

2. QUICK INSTALLATION

This section intends to help you setup the VRT-420N as fast as possible. The setup includes setup, and different type of Internet connection. For more information about the settings, please also refer to the user's manual in the CD-ROM.

In the Setup you are required to fill in only the information necessary to access the Internet, you will see the screen below.

Step 1 Host Settings

Please choose the WAN Connection type, Gateway and DNS settings.

Setup - WAN

WAN 1

WAN Enable Disable

Connection Type

External IP Address

Netmask

Gateway

Static DNS 1

Static DNS 2

MTU Bytes

VPN Client Enable Disable

WAN 2

WAN Enable Disable

Connection Type

Host Name

MTU Bytes

Bigpond Login Enable Disable

Bigpond Login Server

Bigpond Login User Name

Bigpond Login Password

VPN Client Enable Disable

Step 2 WAN Settings

In this section you have to select one of these types of connections that you will be using to connect your VRT-420N's WAN port to your ISP (see screen below).



Note

Different ISP's require different methods of connecting to the Internet, please check with your ISP as to the type of connection it requires.

Step 3 Wireless Settings

In this section you have to set VRT-420N's Wireless SSID (see screen below).

Wireless - Basic

WLAN 1

Wireless Connection	<input checked="" type="radio"/> Enable <input type="radio"/> Disable
Wireless Mode	N only
Transmission Power	100%
Wireless Channel	Channel 11 [2.462GHz]
Wireless Isolation Between SSIDs	<input type="radio"/> Enable <input checked="" type="radio"/> Disable

WLAN 1 - SSID 1

Wireless SSID	<input checked="" type="radio"/> Enable <input type="radio"/> Disable
Wireless SSID Name	default
Wireless SSID Broadcasting	<input checked="" type="radio"/> Enable <input type="radio"/> Disable
Wi-Fi Multimedia (WMM)	<input checked="" type="radio"/> Enable <input type="radio"/> Disable
Wireless Isolation	<input type="radio"/> Enable <input checked="" type="radio"/> Disable
Security Mode	Disable

Further Information

If you still have any problem on connecting, please check user's manual on the bundled CD for detail configuration.

If you have any other questions, please contact the dealer where you purchased this product or you can contact PLANET directly at the following email address: support@planet.com.tw

This page is intentionally left blank