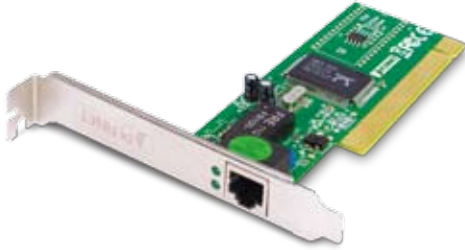


# 10/100Base-TX PCI Adapter, Full Duplex



The PLANET ENW-9504 is a 10/100Mbps based 32-bit Peripheral Component Interconnect (PCI) Local Bus Ethernet Adapter designed to address high-performance system application requirements. The bus-master architecture provides high data throughput in the system and low utilization of CPU and system bus. The adapter provides Auto-Negotiation feature that automatically detects and determines the optimal inter-operation mode with other devices. The ENW-9504 supports both 10Mbps and 100Mbps data rates with the UTP-CAT5 or STP cable. It also provides LED indicators for quick monitoring of busy, link collision and speed indication. Furthermore, the ENW-9504 can be operated in Full-Duplex mode.

## KEY FEATURES

- Complies with IEEE 802.3 CSMA/CD, 100Base-TX, and 10Base-T standard
- Complies with PCI local bus specification (Revision 2.2)
- High-performance Bus Master architecture with DMA Buffer Management Unit
- 3-in-1 controller chip supports early-interrupt on transmission in order to increase the performance
- One RJ-45 for 100Base-TX and 10Base-T, Auto-Negotiation
- Provides Full-Duplex Ethernet operation for both 10Base-T and 100Base-TX expanding the bandwidth up to 20/200Mbps
- ACPI 2.0, WFM 2.0 (Wired for Management) supported
- Supports for most popular NOS:
  - ODI Driver for NetWare 3.x, 4.x, 5.x, NDIS Driver for LAN Manager,
  - Microsoft Windows 95/98/98SE/Me/NT/2000/XP/Vista/7, Windows for Workgroup,
  - Packet driver for TCP/IP, SCO Unix 4.x, 5.x, LANtastic

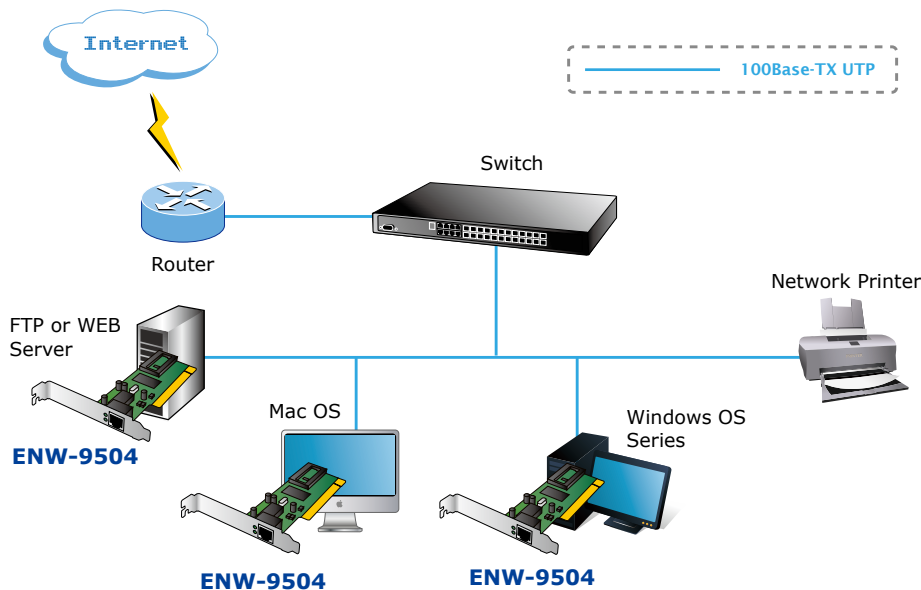
## APPLICATIONS

### Powerful desktop NICs

Lower in costs, the PCs that runs CAD/CAM or multimedia can install the ENW-9504 in the cost of Fast Ethernet NIC where speed up the performance between PCs or servers.

### Good compatibility

ENW-9504 is compatible with most common operating systems, such as: Microsoft Windows 95/98/98SE/Me/NT/2000/XP/Vista/7, and provide the appropriate driver. It support Auto MDI / MDIX which can be directly connected with other network devices without jumper or cable to determine the use, it's very convenience.



**SPECIFICATION**

Product	10/100Base-TX PCI Adapter, Full Duplex	
Model	ENW-9504	
<b>Hardware Specification</b>		
Attachment Interface	PCI 2.1/2.2 Bus Master, 32-bit, 33MHz	
Media Interface	1 x 10/100Mbps Auto-Negotiation RJ-45 Port	
Cabling Options	Category 5/5e or above, 4-Pair	
LED Indicators	Link / Active per port	
Transmission Rate	10/100Mbps for Half-Duplex mode 20/200Mbps for Full-Duplex mode	
<b>Advanced Function</b>		
NOS Support	Windows NT4.0 / 2000 / 2003 / 2008 Windows 98 / ME / XP / Vista / Win7 Netware and Linux MAC OS 8.x / 9.x /10.04 /10.1.x / 10.2.x	
<b>Standards Conformance</b>		
Standards Compliance	IEEE 802.3u IEEE 802.3x IEEE 802.3	100Base-TX Full Duplex Flow 10Base-T

**ORDERING INFORMATION**

ENW-9504	10/100Base-TX PCI Adapter, Full Duplex (Realtek chip)
----------	---