

**3G / 802.11n Wireless Portable Router  
with 3G HSUPA**

**WNRT-320GS**

Quick Installation Guide

# Table of Contents

1. Package Contents .....	3
2. Physical Introduction .....	4
3. Hardware Installation .....	5
4. Web UI Configuration .....	10
5. Further Information .....	12

# 1. Package Contents

Thank you for choosing PLANET WNRT-320GS, the most convenient wireless portable 3G router. Before installing the router, please verify the contents inside the package box.



WNRT-320GS



Quick Guide



CD-ROM



Power Adapter



USB Cable



Ethernet Cable



Li-ion Battery



Note

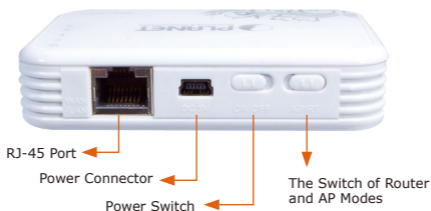
If there is any item missed or damaged, please contact the seller immediately.

## 2. Physical Introduction

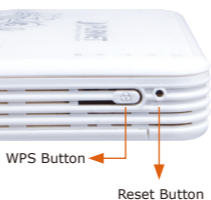
### Top Panel Description



### Front Panel Description



### Side Panel Description



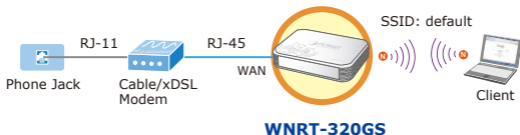
### 3. Hardware Installation

Please follow the instructions below to activate the WNRT-320GS.



**Step 1:** Remove the cover in the bottom of the machine. You can choose to insert the SIM card into the slot for 3G connection, or connect WNRT-320GS directly with the Cable/xDSL Modem via UTP cable for Internet service. And install the attached battery into the slot if you need. Then replace the cover.



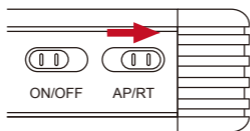
OR



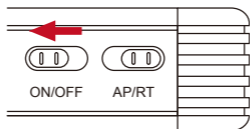


1. Please only charge the battery by the power adapter and USB cable attached in the package.
2. When the battery is being charged, the red  LED will be lit up. After the battery is fully charged, the  LED will become green. Please do not recharge the battery continuously at this moment.
3. The battery should be kept in a cool and dry place.

**Step 2:** Make sure the operation mode by the hardware switch is at **Router Mode** (default setting).



**Step 3:** Connect the power adapter with the WNRT-320GS if necessary. And then turn on it.



**Step 4:** Use your PC equipped wireless adapter to site survey the wireless signal of WNRT-320GS, and connect your PC with it wirelessly.

Default SSID: **default**

Default Wireless Encryption: **WPA-PSK / WPA2-PSK**

Default Password: **1234567890**



Note

1. When the WNRT-320GS is at **Router Mode**, the only RJ-45 port will act as a WAN port. Therefore, the client devices can only connect with WNRT-320GS wirelessly. However, if you need to connect the WNRT-320GS with your computer by UTP cable, please switch it to **AP Mode** first. And the RJ-45 port will act as a LAN port to be able to connect with your computer.



Note

2. If you cannot obtain an IP address automatically from the WNRT-320GS at **Router Mode** after clicking the Connect button on the screen, please follow the procedures below to configure the Windows Network Connection.

Step 1. Click **"Start"** button located at lower-left corner of the screen.

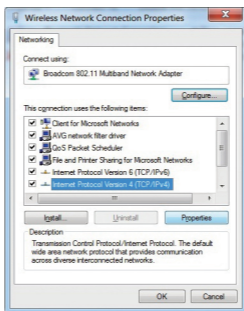
Step 2. Click **"Control Panel"**.

Step 3. Click **"Network and Sharing Center"**.

Step 4. Click **"Change adapter settings"**.

Step 5. Right-click **"Wireless Network Connection"** or **"Local Area Connection"**, and choose **"Properties"**.

Step 6. Select **"Internet Protocol Version 4 (TCP/IPv4)"** and click **"Properties"** button.

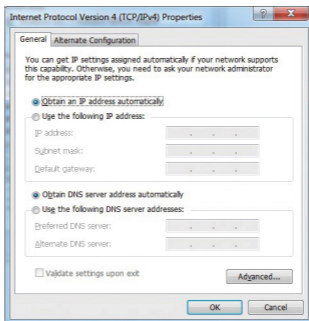






Note

Step 7. Select **“Obtain an IP address automatically”** and **“Obtain DNS server address automatically”**, then click **“OK”**.



## 4. Web UI Configuration

Default IP Address: **192.168.1.1**

Default Username: **admin**

Default Password: **admin**

**Step 1:** Open the Web browser and enter the default IP address <http://192.168.1.1>

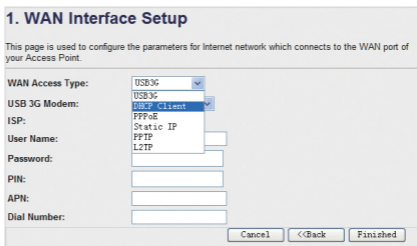


The default username and password are both "**admin**". Then click OK button to continue.

**Step 2:** When you enter into the Web User Interface, the first screen appears is Setup Wizard. Click Next>> button to continue.



**Step 3:** Please select the corresponding WAN Access Type of the Internet connection. After the related configuration is done, click Finished button to reboot and make the settings take effect.



You have already finished the configuration of the WNRT-320GS. Now you can use your iPhone, iPad, laptop, and any other Wi-Fi devices to connect with it wirelessly and start surfing the Internet.

---

## ***5. Further Information***

The above introductions are simple installations and configurations for WNRT-320GS. For further configurations of 3G, WAN, LAN, Wireless Security, Firewall, Routing, Port Forwarding, DMZ, and DDNS, etc., please refer to the user's manual in the CD attached in the package. If you have further questions, please contact the local dealer or distributor where you purchased this product.