

**28-Port 10/100/1000Mbps with
4 Shared SFP Managed Gigabit Switch**

WGSW-28040 / WGSW-28040P

Quick Installation Guide

Table of Contents

1. Package Content.....	3
2. Requirements	4
3. Terminal Setup	5
4. Logon to the Console	6
5. Configure IP Address	7
6. Save the Configuration.....	9
7. Start Web Management.....	10
Customer Support.....	14

1. Package Content

Thank you for purchasing PLANET Layer 2 Managed Switch, WGSW-28040 series. Terms of **"Managed Switch"** means the Switches mentioned titled in the cover page of this Quick installation guide, i.e. WGSW-28040 / WGSW-28040P.

Open the box of the **Managed Switch** and carefully unpack it. The box should contain the following items:

- The Managed Switch x 1
- User's Manual CD x 1
- Quick Installation Guide x 1
- RS232 Cable x 1
- Rubber Feet x 4
- Two Rack-mounting Brackets with Attachment Screws x 1
- Power Cord x 1

If any item is found missing or damaged, please contact your local reseller for replacement.

2. Requirements

- Workstations of subscribers running Windows XP/2003/Vista/7/2008, MAC OS9 or later, Linux, UNIX or other platform compatible with TCP/IP protocols.
- Workstation installed with Ethernet NIC (Network Interface Card)
- **Serial Port connect** (Terminal)
 - ◆ Above PC with COM Port (DB9)
- **Ethernet Port connect**
 - ◆ Network cables - Use standard network (UTP) cables with RJ-45 connectors.
 - ◆ Above PC installed with Web Browser and JAVA runtime environment Plug-in

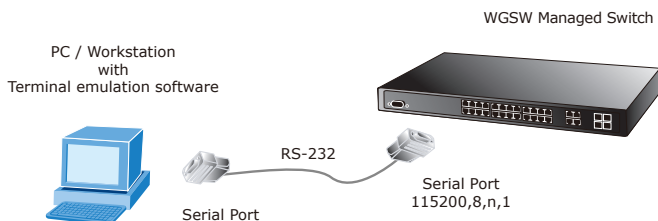


Note

It is recommended to use Internet Explorer 7.0 or above to access WGSW Managed Switch.

3. Terminal Setup

To configure the system, connect a serial cable to a **COM port** on a PC or notebook computer and to serial (console) port of the WGSW Managed Switch. The console port of the Managed Switch is DCE already, so that you can connect the console port directly through PC without the need of Null Modem.



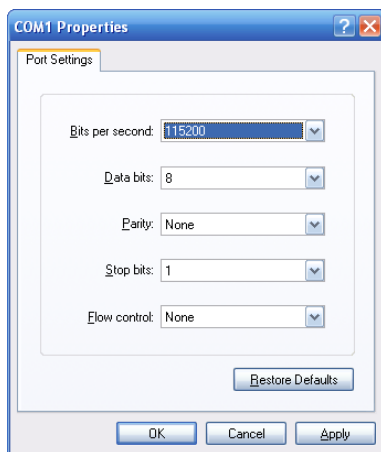
Note

In the terminal setup steps below, this Quick Installation Guide use WGSW-28040 as the example. However, the steps for WGSW-28040P are similar.

A terminal program is required to make the software connection to the WGSW Managed Switch. Windows' **Hyper Terminal** program may be a good choice. The Hyper Terminal can be accessed from the **Start** menu.

1. Click **START**, then **Programs, Accessories** and then **Hyper Terminal**.
2. When the following screen appears, make sure that the COM port should be configured as:

- ◆ Baud: 115200
- ◆ Data bits: 8
- ◆ Parity: None
- ◆ Stop bits: 1
- ◆ Flow Control: None



4. Logon to the Console

Once the terminal has connected to the device, power on the WGSW Managed Switch, the terminal will display that it is running testing procedures.

Then, the following message asks the login username and password. The factory default username and password as following and the login screen in Figure 4-1 appears.

Username: **admin**
Password: **admin**

1. On **"Username"** & **"Password"** prompt, enter **"admin"**.
2. On **"WGSW-28040>"** prompt, enter **"enable"**.
3. On **"Username"** & **"Password"** prompt, enter **"admin"**.

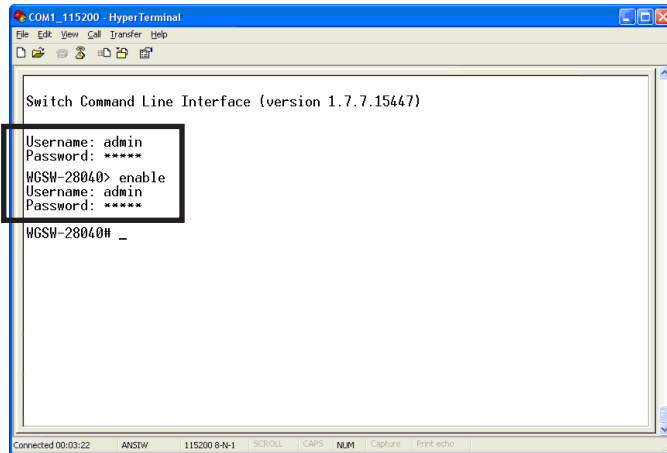


Figure 4-1: WGSW Managed Switch Console Login screen



1. For security reason, please change and memorize the new password after this first setup.
2. Only accept command in lowercase letter under console interface.

5. Configure IP Address

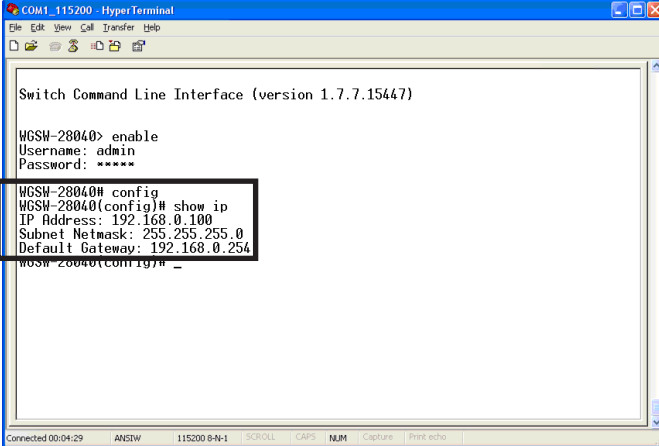
The WGSW Managed Switch is shipped with default IP address as following.

IP Address: **192.168.0.100**
Subnet Mask: **255.255.255.0**

To check the current IP address or modify a new IP address for the Switch, please use the procedures as follow:

■ Show the current IP address

1. On "**WGSW-28040#**" prompt, enter "**config**".
2. On "**WGSW-28040 (config)#**" prompt, enter "**show ip**".
3. The screen displays the current IP address, Subnet Mask and Gateway. As show in Figure 5-1.



```
COM1_115200 - HyperTerminal
File Edit View Call Transfer Help
Switch Command Line Interface (version 1.7.7.15447)

WGSW-28040> enable
Username: admin
Password: *****

WGSW-28040# config
WGSW-28040(config)# show ip
IP Address: 192.168.0.100
Subnet Netmask: 255.255.255.0
Default Gateway: 192.168.0.254
WGSW-28040(config)# _

Connected 00:04:29 ANEDW 115200 8-N-1 SCROLL CAPS NUM Capture Print echo
```

Figure 5-1: Show IP Information screen

■ Configure IP address

4. On "**WGSW-28040(config)#**" prompt, enter the following command and press **<Enter>**. As show in Figure 5-2.

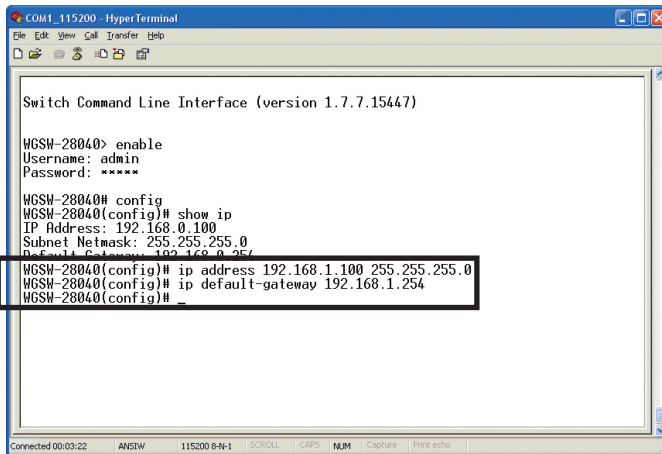
```
WGSW-28040(config)# ip address 192.168.1.100 255.255.255.0
WGSW-28040(config)# ip default-gateway 192.168.1.254
```

The previous command would apply the follow settings for the Switch.

IP Address: 192.168.1.100

Subnet Mask: 255.255.255.0

Gateway: 192.168.1.254



```
COM1_115200 - HyperTerminal
Switch Command Line Interface (version 1.7.7.15447)

WGSW-28040> enable
Username: admin
Password: *****

WGSW-28040# config
WGSW-28040(config)# show ip
IP Address: 192.168.0.100
Subnet Netmask: 255.255.255.0
Default Gateway: 192.168.0.254
WGSW-28040(config)# ip address 192.168.1.100 255.255.255.0
WGSW-28040(config)# ip default-gateway 192.168.1.254
WGSW-28040(config)#
```

Figure 5-2: Set IP Address screen

5. Repeat Step 1 to check if the IP address is changed.

If the IP is successfully configured, the WGSW Managed Switch will apply the new IP address setting immediately. You can access the Web interface of WGSW Managed Switch through the new IP address.

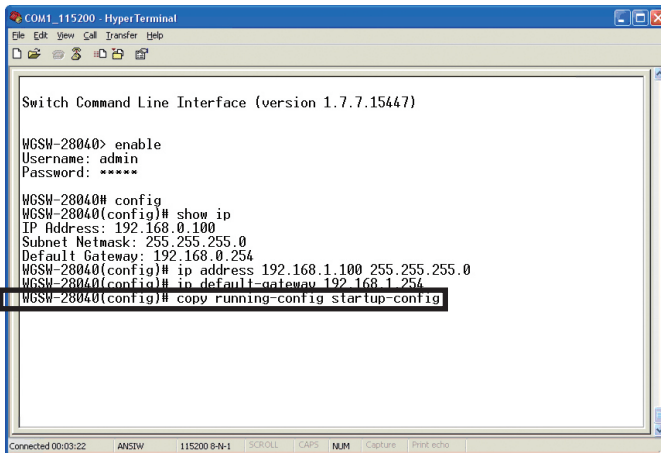


If you do not familiar with console command or the related parameter, enter "?" anytime in console to get the help description.

6. Save the Configuration

In switch, the running configuration file stores in the RAM. In the current version, the running configuration sequence running-config can be saved from the RAM to FLASH by **write** command or **copy running-config startup-config** command, so that the running configuration sequence becomes the start up configuration file, which is called configuration save.

1. On "**WGSW-28040(config)#**" prompt, enter "**copy running-config startup-config**". As show in Figure 6-1.



```
COM1_115200 - HyperTerminal
File Edit View Call Transfer Help
Switch Command Line Interface (version 1.7.7.15447)
WGSW-28040> enable
Username: admin
Password: *****
WGSW-28040# config
WGSW-28040(config)# show ip
IP Address: 192.168.0.100
Subnet Netmask: 255.255.255.0
Default Gateway: 192.168.0.254
WGSW-28040(config)# ip address 192.168.1.100 255.255.255.0
WGSW-28040(config)# ip default-gateway 192.168.1.254
WGSW-28040(config)# copy running-config startup-config
```

Figure 6-1: Save the Configuration screen

7. Start Web Management

The following shows how to start up the **Web Management** of the WGSW Managed Switch. Note the WGSW Managed Switch is configured through an Ethernet connection, please make sure the manager PC must be set on the same **IP subnet address**.

For example, the default IP address of the WGSW Managed Switch is **192.168.0.100**, then the manager PC should be set at **192.168.0.x** (where x is a number between 1 and 254, except 100), and the default subnet mask is 255.255.255.0.

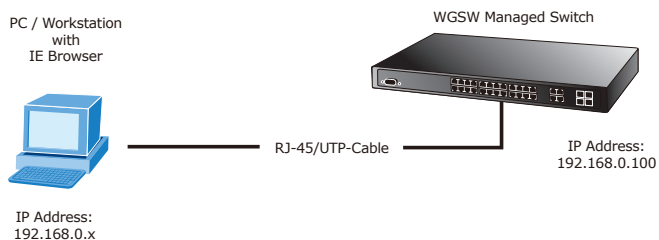


Figure 7-1: IP Management Diagram

Login the Managed Switch

1. Use Internet Explorer 7.0 or above Web browser, enter IP address **http://192.168.0.100** (the factory-default IP address or that you have just changed in console) to access the Web interface.
2. When the following dialog box appears, please enter the default username and password "**admin**" (or the password you have changed via console). The login screen in Figure 7-2 appears.

Default Username: **admin**

Default Password: **admin**

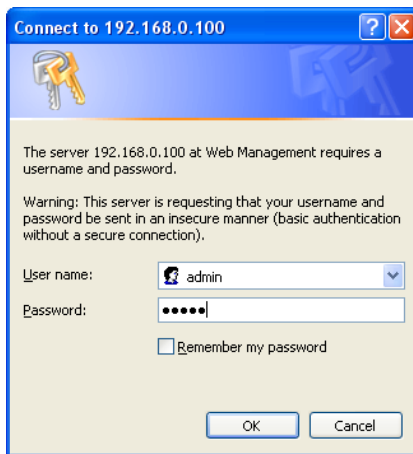


Figure 7-2: Login screen

3. After entering the password, the main screen appears as Figure 7-3.



The following screen based on WGSW-28040 for WGSW-28040P the display will be the same for WGSW-28040.

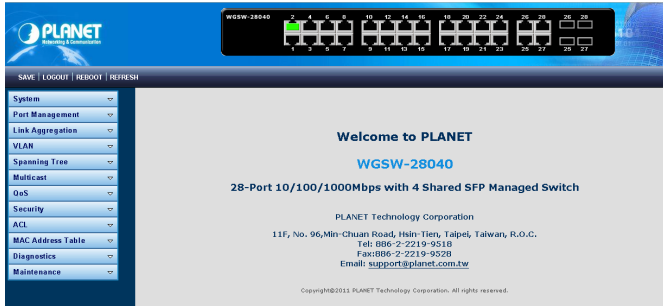


Figure 7-3: Web Main Screen of WGSW Managed Switch

4. The Switch Menu on the left of the Web page let you access all the commands and statistics the Switch provides.

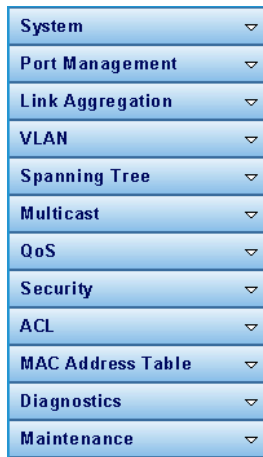


Figure7-4: Switch Menu

Now, you can use the Web management interface to continue the Switch management or manage the Switch by console interface.

Please refer to the user manual for more.

Save Configuration

In switch, the running configuration file stores in the RAM. In the current version, the running configuration sequence running-config can be saved from the RAM to FLASH by **write** command or **copy running-config startup-config** command, so that the running configuration sequence becomes the start up configuration file, which is called configuration save.

To save all applied changes and set the current configuration as startup configuration. The startup-configuration file will be load automatically across a system reboot.

1. Click Maintenance, Save Configuration.
2. Select "startup-config.cfg" as the drop-menu, and then click "Save Configuration" button.

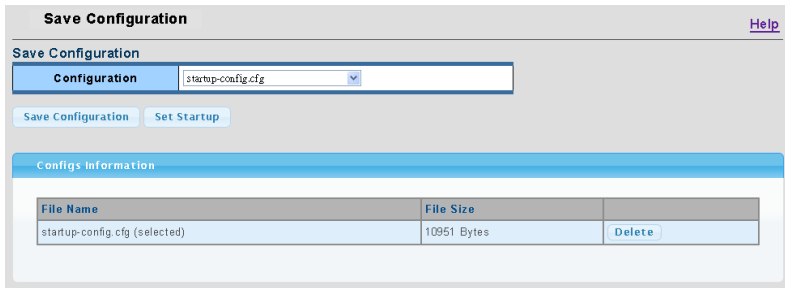
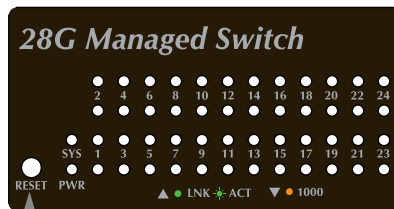


Figure7-5: Save Configuration screen

■ While IP Address be changed or forgotten admin password –

To reset the IP address to the default IP Address "192.168.0.100" or reset the login password to default value. Press the hardware **reset button** at the front panel about **10 seconds**. After the device is rebooted, you can login the management WEB interface within the same subnet of 192.168.0.xx.



Reset

Customer Support

Thank you for purchase PLANET products. You can browse our online FAQ resource at the PLANET website first to check if it could solve you issue. If you need more support information, please contact PLANET switch support team.

PLANET online FAQ :

<http://www.planet.com.tw/en/support/faq.php?type=1>

Switch support team mail address :

support_switch@planet.com.tw

This page is intentionally left blank

This page is intentionally left blank