

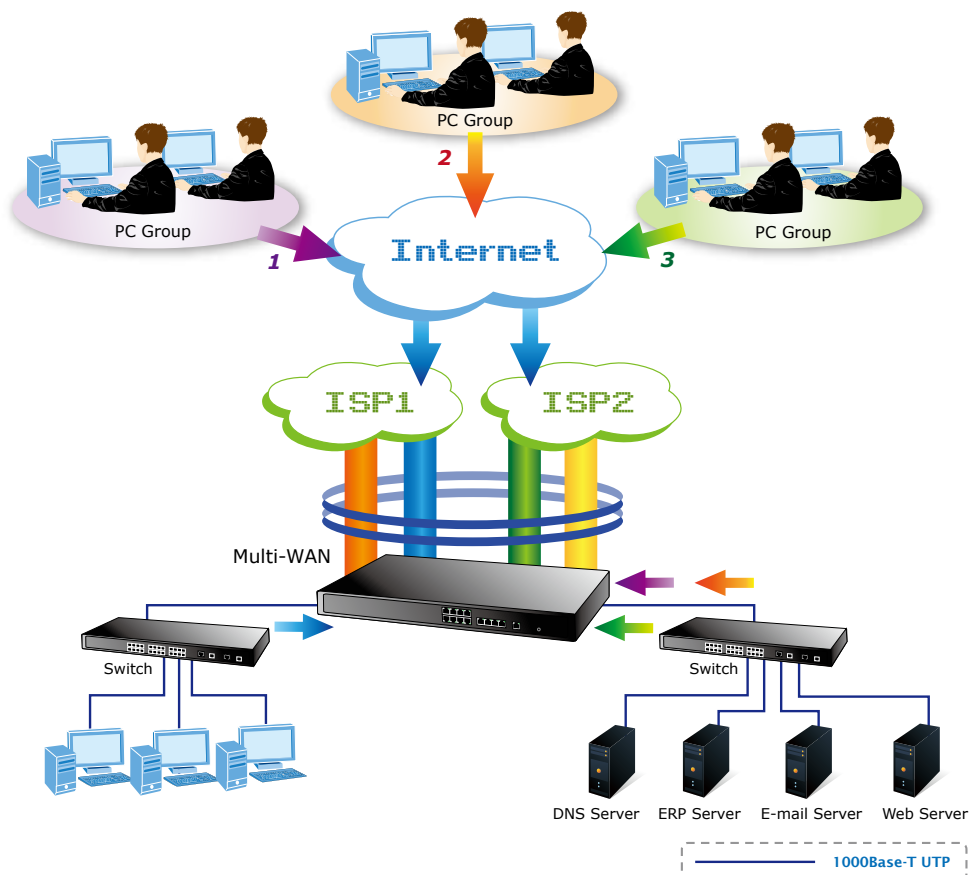
Gigabit Content Security Router



As Internet becomes essential for business, the crucial solution to prevent your Internet connection from failure is to have more than one connection. PLANET CS-5800 is the Gigabit Content Security Router ideal to help the SMBs increase the broadband network performance and reduce the risks of potential shutdown if one of the Internet connections fails. The CS-5800 can monitor each WAN link status and automatically activate backup links when a failure is detected. The detection is based on the configurable target Internet addresses.

Network Efficiency Improvement with Load-Balancing

The CS-5800 helps the server working to improve efficiency and allows you to perform load-balancing by distributing the traffic through three or four WAN connections. In Outbound Load Balancing, the network sessions are assigned based on the user configurable load balancing mode including "Auto Load Balance", "Unbinding WAN Balance" and "Strategy Routing". Users can also configure which IP or TCP/UDP type of traffic use which WAN port to connect. The Inbound Load Balancing is for enterprise's internal server in order to reduce the server loading and the risks of system crash.

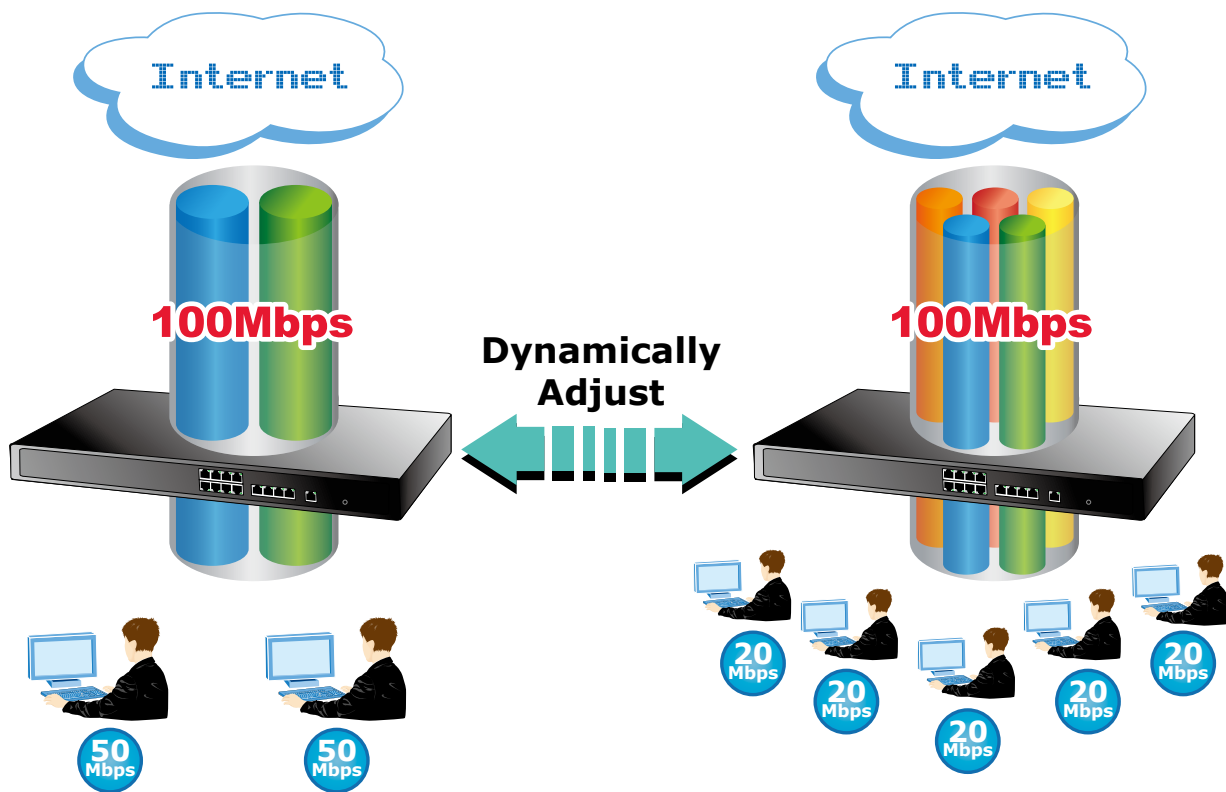


Strong Protection for Network Security

The CS-5800 Gigabit Content Security Router integrates a complete security solution in one box in addition to the Multi-Homing functions. It provides the policy-based firewall, content filtering functions that make it a perfect security protection for your network. By applying the CS-5800, there is no need of integrating different security products on the network and worry free from complicated connections and settings.

QoS Bandwidth Management

Besides offering easy yet powerful bandwidth management capability, the CS-5800 features Smart QoS with dynamic bandwidth management to automatically control P2P, video downloading and other bandwidth hogging in order to avoid bandwidth insufficiency. It helps the network administrators better allocate network resources based on business priorities, as well as to shape and control bandwidth usage by prioritizing different persons/groups or applications.



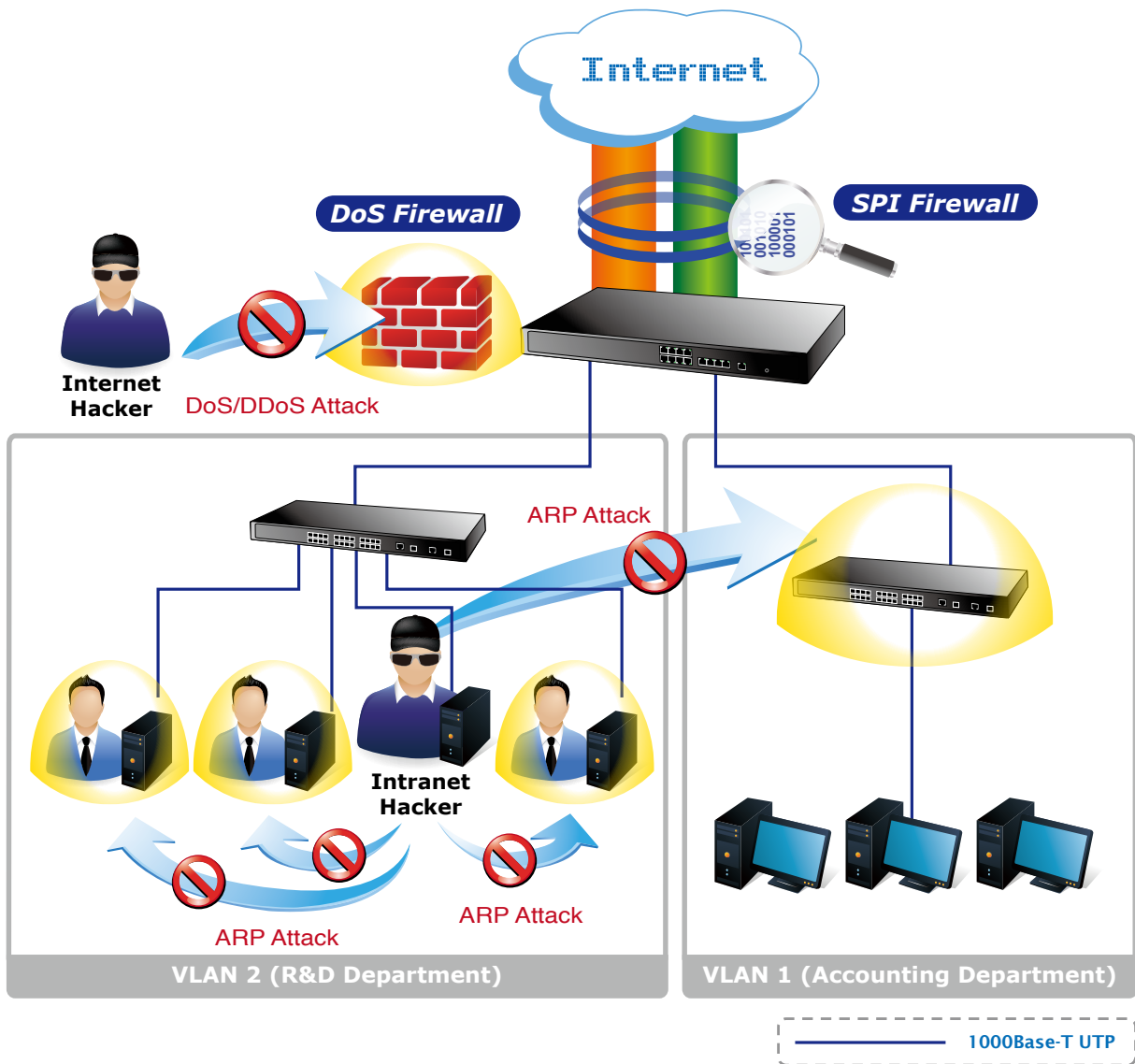
Easy Remote Management

The CS-5800 provides embedded Mirror Port function to facilitate monitoring the connected devices and their online behavior. It also supports secure remote management via web browser with protection of user authentication.

Applications

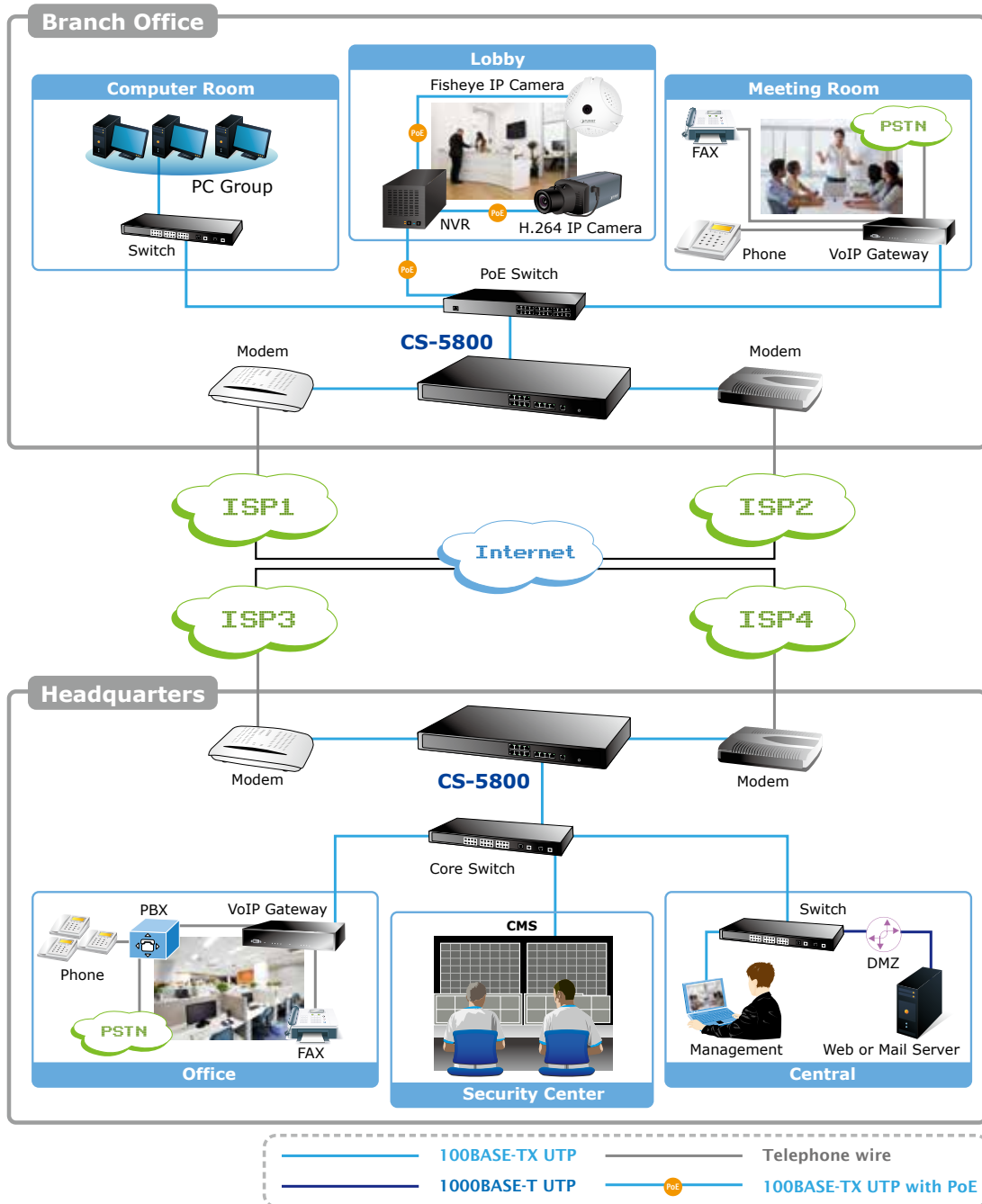
Secured and easy management

PLANET Gigabit Content Security Router CS-5800 has the powerful firewall functions including SPI Firewall DoS prevention. It provides a flexible way of secured data communication for between the headquarters, branches and the vendors. The Multi-subnet and port VLAN functions allow the network administrators to manage the network belonging to different groups of users easily and efficiently.



Stable and flexible bandwidth management

The CS-5800 can connect with the multiple WANs by different ISPs. It can create a stable and qualified internet connection through its outbound loadbalance feature for many important applications such as VoIP, Video Conference and data transmission.



Key Features

- **Physical Port**
 - 8 x 10/100/1000Base-T RJ-45, configurable with LAN 1 (Mirror Port)
 - 4~5 x 10/100/1000Mbps RJ-45, configurable with WAN 5 (WAN 5 / DMZ)
 - 1 x 10/100/1000Base-T RJ-45 DMZ port
- **Multi-WAN Function**
 - Inbound / Outbound Load Balance: by session and by IP
 - Bandwidth expansion with 5 Gigabit WAN ports
 - Multi-WAN auto line backup
- **IP Routing feature**
 - Dynamic Route RIP v1/v2
 - Static Route
 - Strategy Routing
- **Bandwidth Management**
 - Guaranteed Bandwidth
 - Max. Bandwidth
 - Session Limit
 - Port-Based QoS
- **Firewall Security**
 - Stateful Packet Inspection (SPI) Firewall
 - Denial of Service (DoS) prevention
 - IP & Port filtering
 - Block Website by Keyword, Content Filter
 - Firewall detection: Ping of Death, SYN Flooding, Land attack, IP Spoofing
 - Supports DMZ Host to protect your network
 - Prevents ARP Attack on LAN
- **Networking**
 - DHCP Server (supports class C), client, dynamic IP, static IP, IP Grouping support
 - Multiple DHCP Servers support multiple Subnets (supports 4 sets of Class C)
 - PPPoE / Static IP / DHCP Client
 - Protocol: TCP/IP, ARP, ICMP, FTP/TFTP, IPv4, IPv6
 - NAT with port forwarding
 - DNS Relay
 - DDNS supports DynDNS, 3322
 - Password protected configuration or management sessions for web access
 - Port Management – Speed / Duplex / Auto Negotiation / VLAN
 - Transparent Bridge
- **Network Management**
 - Comprehensive web based management and policy setting
 - SNMP v1/v2c
 - Monitoring, Logging, and Alarms of system activities
 - Firmware upgrade through web browser

Specification

Product	Gigabit Content Security Router	
Model	CS-5800	
Hardware		
Ethernet	LAN	8 x 10/100/1000 Mbps RJ-45
	WAN	4~5 x 10/100/1000 Mbps RJ-45, configurable with WAN 5 (WAN 5 / DMZ)
	DMZ	1 x 10/100/1000 Mbps RJ-45
Button	Reset	1 x Reset button for factory default settings
	Power	1 x Power on/off switch
Operating Environment	Temperature: 0~50 Degree C Relative Humidity: 10~85% (non-condensing)	
Dimension (W x D x H)	440 x 254 x 43.5 mm	
Power	100~240V AC, 50~60 Hz, max 0.8A	
Regulatory	FCC Class A, CE	

Software	
Multi-WAN Function	<ul style="list-style-type: none"> • Inbound / Outbound Load Balance: by session and by IP • Protocol Binding • Network Service Detection
Routing	<ul style="list-style-type: none"> • Dynamic Route RIP v1/v2 • Static Route
System Performance	<ul style="list-style-type: none"> • Concurrent session: 50000 • Firewall performance: 1 Gbps • Corporation Size: SMB (clients 200~250) • 3DES performance: 270Mbps
Bandwidth Management	<ul style="list-style-type: none"> • Guaranteed Bandwidth • Max Bandwidth • Session Limit • Port-Based QoS
Firewall Security	<ul style="list-style-type: none"> • NAT • One-to-One NAT • Multiple-to-One NAT • Stateful Packet Inspection (SPI) Firewall • Denial of Service (DoS) prevention • IP & Port filtering • Block Website by Keyword, Content Filter • Firewall detection: Ping of Death, SYN Flooding, Land attack, IP Spoofing • Email Alert for Hacker Attack • IP & MAC Binding • Supports DMZ Host to protect your network • Prevents ARP Attack on LAN
Networking	<ul style="list-style-type: none"> • Configurable DMZ • DHCP Server (supports class C), client, dynamic IP, static IP, IP Grouping support • Multiple DHCP Server (supports 4 sets of Class C) • PPPoE / Static IP / DHCP Client • Multiple Subnet • Protocol: TCP/IP, ARP, ICMP, FTP/TFTP, IPv4, IPv6 • NAT with port forwarding • DNS Relay • DDNS Supports DynDNS, 3322 • Password protected configuration or management sessions for web access • Port Management – Speed / Duplex / Auto Negotiation / VLAN • Transparent Bridge
Network Management	<ul style="list-style-type: none"> • Comprehensive web based management and policy setting • SNMP v1/v2c • Monitoring, Logging, and Alarms of system activities • Firmware upgrade through web browser
VPN Pass through	<ul style="list-style-type: none"> • IPSec, PPTP, L2TP Pass through

Ordering Information

CS-5800	Gigabit Content Security Router
---------	---------------------------------

Related Product

VRT-402N	802.11n Wireless VPN/Firewall Router
VRT-420N	802.11n Multi-Homing Broadband Router
MH-3400	Gigabit Multi-Homing VPN Security Router
SG-4800	Gigabit SSL VPN Security Router
CS-1000	Multi-Homing Content Security Gateway
CS-2001	UTM Content Security Gateway