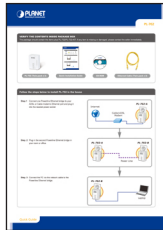


### VERIFY THE CONTENTS INSIDE PACKAGE BOX

The package should contain the items plus PL-702/PL-702-KIT. If any item is missing or damaged, please contact the seller immediately.



PL-702 (Twin pack x 2)



Quick Installation Guide



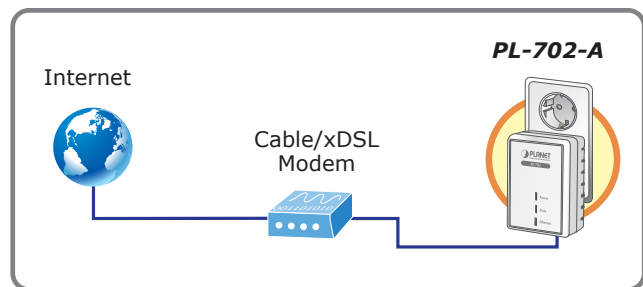
CD-ROM



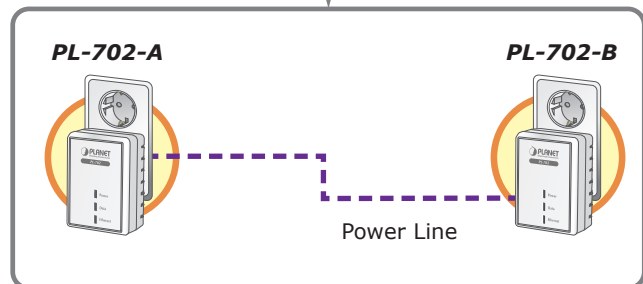
Ethernet Cable (Twin pack x 2)

### Follow the steps below to install PL-702 in the house

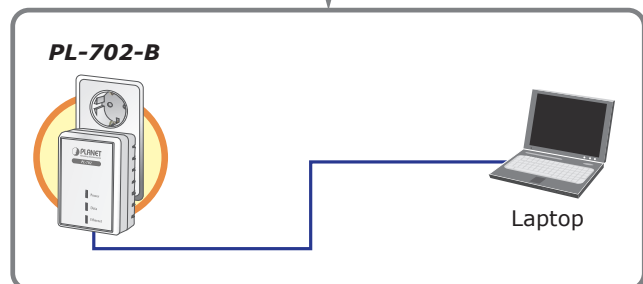
**Step.1** Connect one Powerline Ethernet bridge to your ADSL or Cable modem's Ethernet port and plug it into the nearest power socket.



**Step. 2** Plug in the second Powerline Ethernet bridge in your room or office.



**Step. 3** Connect the PC via the network cable to the Powerline Ethernet bridge.



**LED Definition**

LED	Status	Description
Power	On	Steady on indicate the Powerline device connect to the power outlet.
	Off	Power off
	Green	Device in standby mode
Ethernet	Off	Ethernet Link not active
	Green	Steady on indicates the RJ-45 port has correctly connected to the network card of your PC or the Ethernet network
Data	Off	This HomePlug Ethernet Bridge is not connected
	Red	Minimum connection indicates weak signal and slower network speed: less than 50Mbps
	Orange	Normal signal with standard network speed: 50-99Mbps
	Green	Excellent signal with optimal network speed: 100Mbps+

**Button Definition**

Button	Description	
Reset	Hold the Reset button until the status lights begin to flash.	
Security	Press security button during 1~3 seconds.	Join a another HomePlug AV network
	Press security button more than 10 seconds	Set its security to random value

**Utility Installation for Windows**

The installation procedure for the Powerline Configuration utility will vary depending on which operating system you are using on your computer. The following procedure is for installation under Windows XP. Installation on other operation system is similar.

1. Insert the CD into the CD-ROM drive to initiate the Autorun program. Once completed, a menu screen will appear.
2. Click on the **"Powerline Configuration Utility"** hyperlink in **PL-702** field to start the installation. If the menu screen is not shown, you can start the installation as follows.
  - Click on **Start Menu/Run**.
  - Enter **"E:\Utility\setup.exe"** in the appeared box, where "E" is the letter of your CD-ROM drive.
  - Click on **"OK"** button.
3. The utility will be installed into your computer and a new icon called **"Power Packet Utility"** will appear on your desktop.



Power Packet  
Utility

**NOTE :** This utility is only for Windows 2000, 2003, XP, Vista and Windows 7.

**Further Configuration**

If you want to configure more detail settings of **PL-702**, please refer to user's manual on the bundled CD.

If you have any difficulty on resolving the problem while installing or using the **PL-702**, please contact the dealer where you purchased this product or you can contact PLANET directly at the following email address: [support@planet.com.tw](mailto:support@planet.com.tw)