

**EPL-2000**

**GEPON OLT**

(2-PON Interface, 2 x GbE SFP, 1 x MGT Port)

Quick Installation Guide

# Table of Contents

1. Package Contents .....	3
2. Requirements .....	4
3. MySQL Server Installation .....	5
4. PL-EMS Installation .....	14
5. Starting PL-EMS Management .....	17
6. Customer Support .....	19

---

## 1. Package Contents

Thank you for purchasing PLANET GEAPON OLT EPL-2000. The term "**GEAPON OLT**" refers to the Switch mentioned in this Quick Installation Guide.

The box should contain the following items:

- The GEAPON OLT x 1
- The MGB-PX20 SFP Transceiver x 2
- The Quick Installation Guide x 1
- User's Manual CD x 1
- Power Cord x 1
- Two Rack-mounting Brackets with Attachment Screws x 1 (Set)

If any item is found missing or damaged, please contact your local reseller for replacement.

---

## 2. Requirements

The GEAPON OLT provides a GUI utility to manage the system; the following equipment is necessary for further management:

- Subscriber PC is installed with Ethernet NIC (Network Card)
- **MySQL** Software (Windows Platform) <http://dev.mysql.com/>
- **EMS** Software (Windows Platform)
- **Management Port** connection
  - Network cables - Use standard network (UTP) cables with RJ45 connectors
- **PON Port** connection
  - Fiber Transceiver - Slot with a 1000BASE-PX20 SFP PON transceiver
  - Fiber Cable - Use single mode of fiber (SC) cabl

### 3. MySQL Server Installation

Install the MySQL software with the purpose of saving equipment's alarm message, administrator message, system log, etc.

1. Please visit MySQL official website <http://dev.mysql.com/> and download MySQL-Essential-5.1.73-win32.msi or MySQL-Essential-5.1.73-win64.msi for the Windows system.
2. Once the Setup program starts running, please click the **"Next"** button for starting installation.

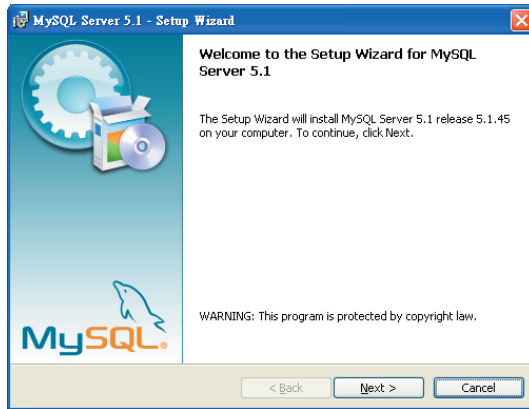


Figure 3-1 MySQL Installation Screen

3. The Setup Type window appears; the default is “Typical” mode. Please click the “Next” button.

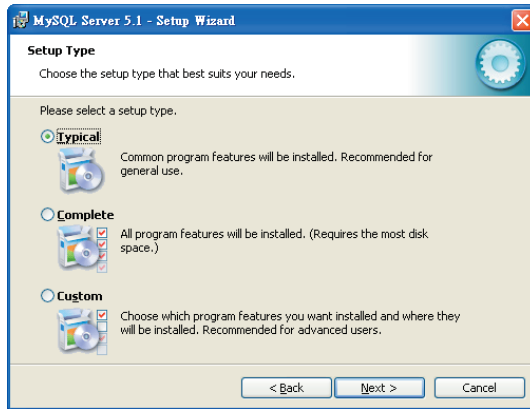


Figure 3-2 Setup Type Screen

4. The “Ready to Install the Program” window appears; please click the “Install” button.

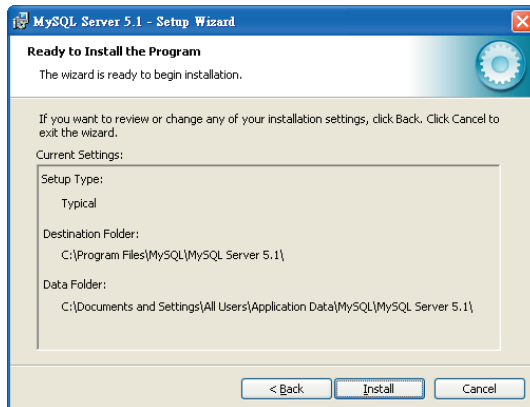


Figure 3-3 Begin Installation Wizard Screen

5. When the installation is done, the “MySQL Enterprise” window appears. Please click the “Next” button.



Figure 3-4 MySQL Enterprise Screen

6. The “Wizard Completed” window appears, and it will ask for Configure the MySQL server and Register the MySQL Server now. Please click the “Finish” button.

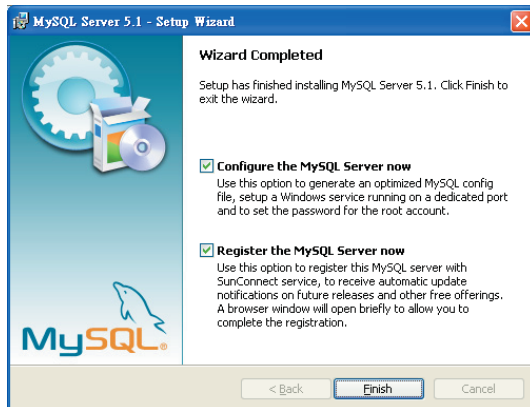


Figure 3-5 Wizard Completed Screen

7. The "MySQL Server Instance Configuration Wizard" window appears; please click the "Next" button.

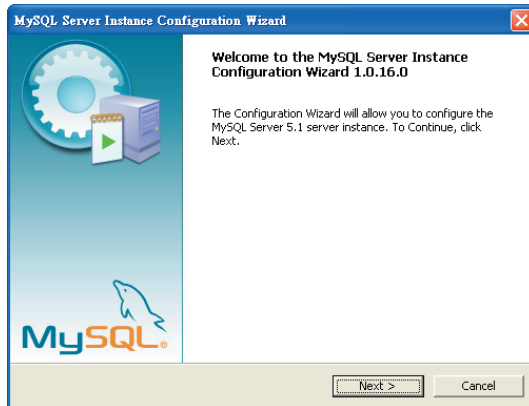


Figure 3-6 MySQL Configuration Wizard Screen

8. The "MySQL Server Instance Configuration" window appears; keep the default setting of "Detailed Configuration" and click the "Next" button.

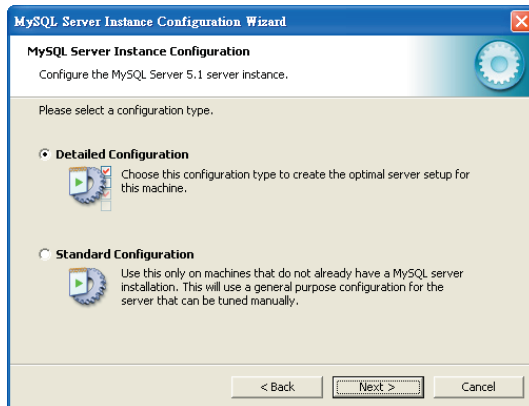


Figure 3-7 MySQL Server Instance Configuration (1) Screen



9. Please select a Server type. Keep the default setting of “Developer Machine” and click the “Next” button.

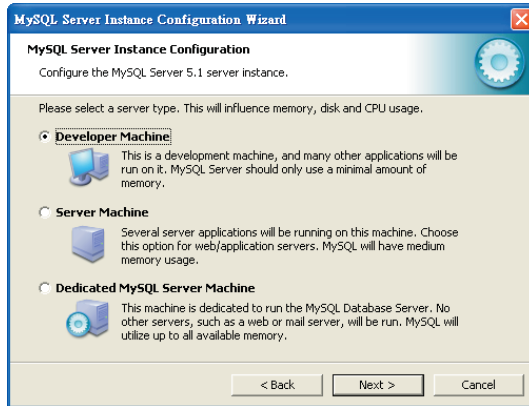


Figure 3-8 MySQL Server Instance Configuration (2) Screen

10. Please select the database usage. Keep the default setting of “Multifunctional Database” and click the “Next” button.

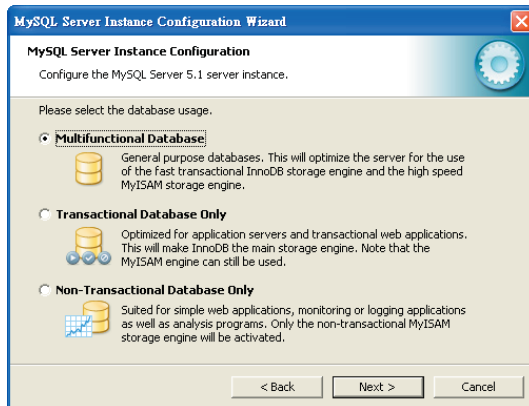


Figure 3-9 MySQL Server Instance Configuration (3) Screen

11. Choose where you want to place the InnoDB Datafile. Here is the remaining default setting. Please click the "Next" button.

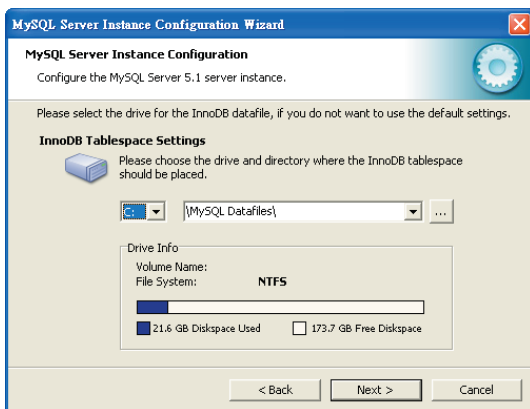


Figure 3-10 MySQL Server Instance Configuration (4) Screen

12. Please set the approximate number of concurrent connections. Keep the default setting of "Decision Support (DSS)/OLAP and click the "Next" button.

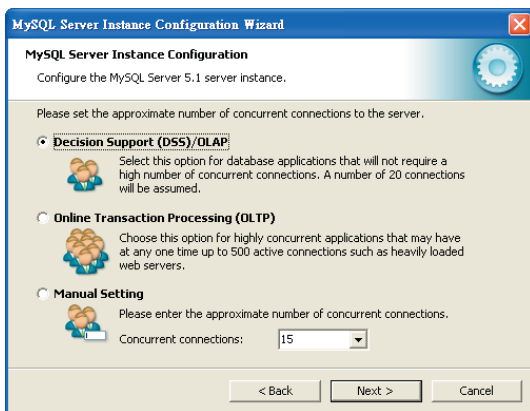


Figure 3-11 MySQL Server Instance Configuration (5) Screen

13. Please set the Network options and Server SQL mode. Keep the default setting and click the "Next" button.

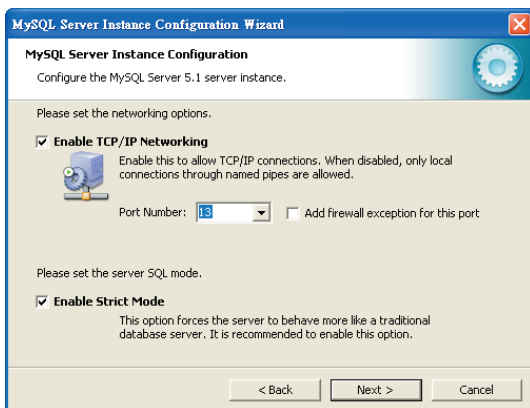


Figure 3-12 MySQL Server Instance Configuration (6) Screen

14. Please Select the default character set. Keep the default setting of "Standard Character Set" and click the "Next" button.

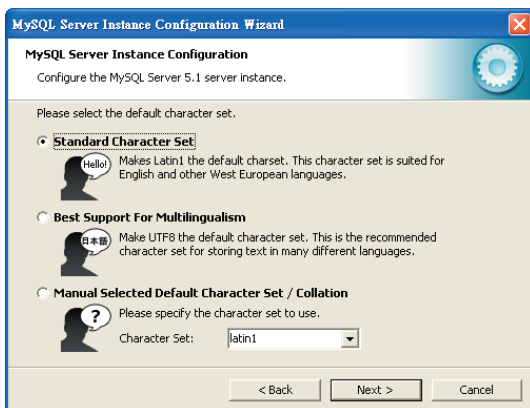


Figure 3-13 MySQL Server Instance Configuration (7) Screen

15. Please set the Windows options. Keep default setting and click the "Next" button.



Figure 3-14 MySQL Server Instance Configuration (8) Screen

16. Please set the security options. Type the password "1234" for current root and new root. Click the "Next" button.

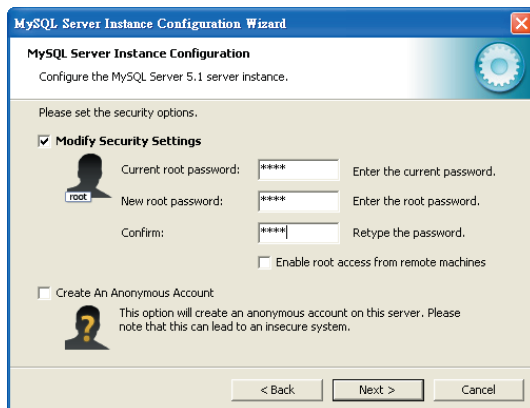


Figure 3-15 MySQL Server Instance Configuration (9) Screen

17. Please click the "Execute" button for starting the configuration.

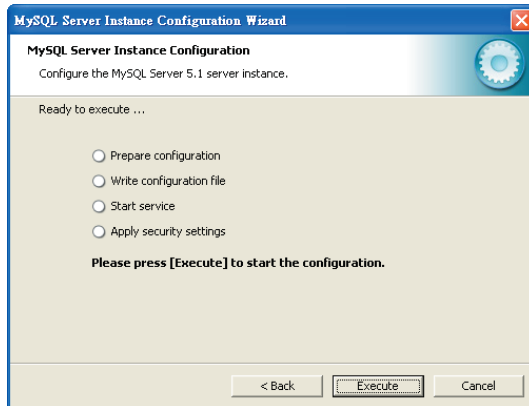
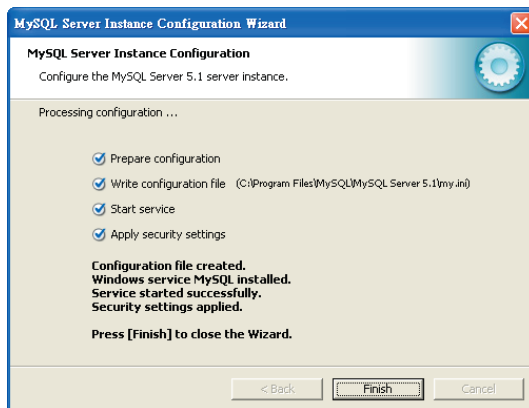


Figure 3-16 MySQL Server Instance Configuration (10) Screen

18. Please give a check to "Configuration file created", "Windows service MySQL installed", "Service started successfully" and "Security settings applied", and then click the "Finish" button.



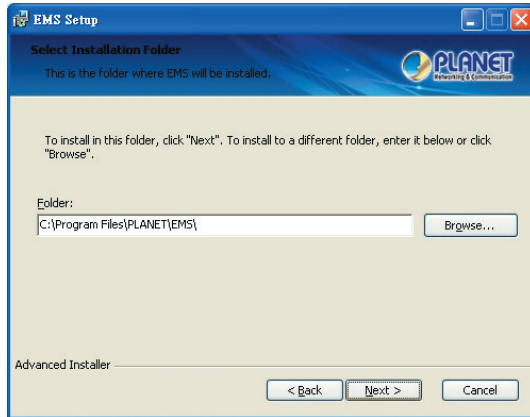
## 4. PL-EMS Installation

1. Insert the bundled CD disk into the CD-ROM drive to launch the autorun program. Once completed, a welcome menu screen will appear. Click the "PL-EMS" hyperlink, the InstallShield Wizard dialog box will appear below.
2. Once the Setup program starts running, please click the **"Next"** button for starting installation.



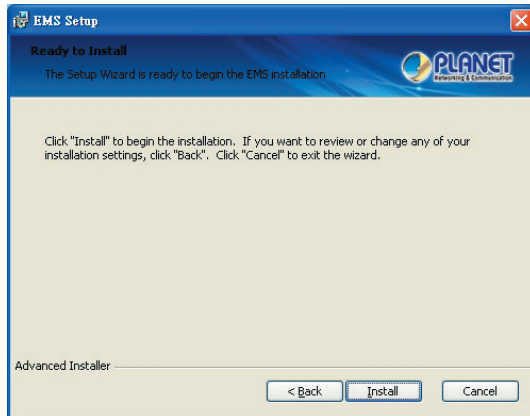
Figure 4-1 PL-EMS Setup Wizard Screen

3. During the installation, it will ask for the place to put the PL\_EMS folder.



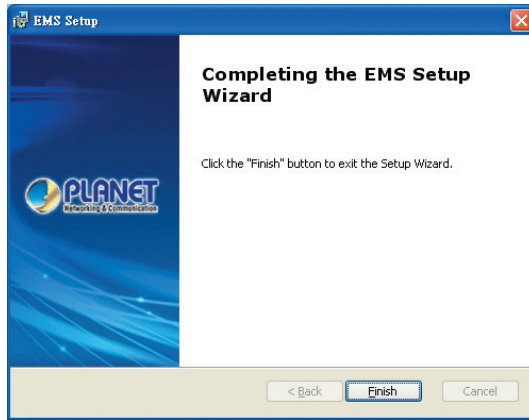
**Figure 4-2** PL-EMS Folder Installation Screen

4. Click "Install" for starting installation.



**Figure 4-3** PL-EMS Installation Screen

5. Click the **“Finish”** button for completing the EMS Setup.



**Figure 4-4** PL-EMS Installation Completing Screen

6. When the PL-EMS installation is done, two icons -- PL Server and PL Client – will appear on the desktop.





## 5. Starting PL-EMS Management

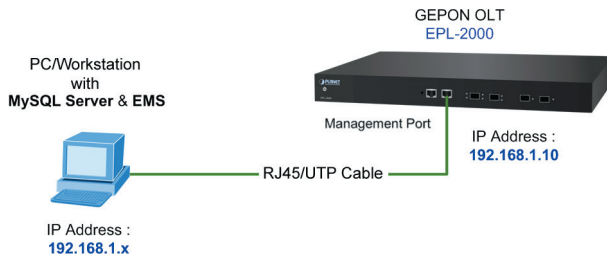


Figure 5-1 IP Management Diagram

The following shows how to start-up the **PL-EMS Management** of the GEAPON OLT. Please note the GEAPON OLT is configured through an Ethernet connection, making sure the manager PC must be set to the same **IP subnet address**.

For example, the default IP address of the GEAPON OLT is **192.168.1.10** (the factory-default IP address), then the manager PC should be set to 192.168.1.x (where x is a number between 1 and 254, except 10), and the default subnet mask is 255.255.255.0.

### Login the GEAPON OLT

1. Double-click the PL Server icon on the PC desktop. After a couple of seconds, it will appear on the lower-right corner of the system tray.

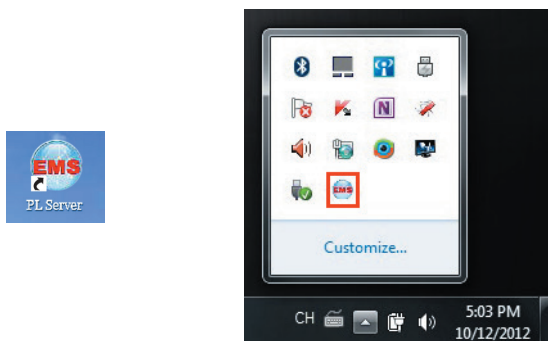
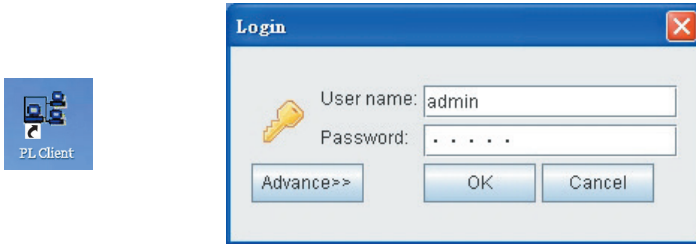


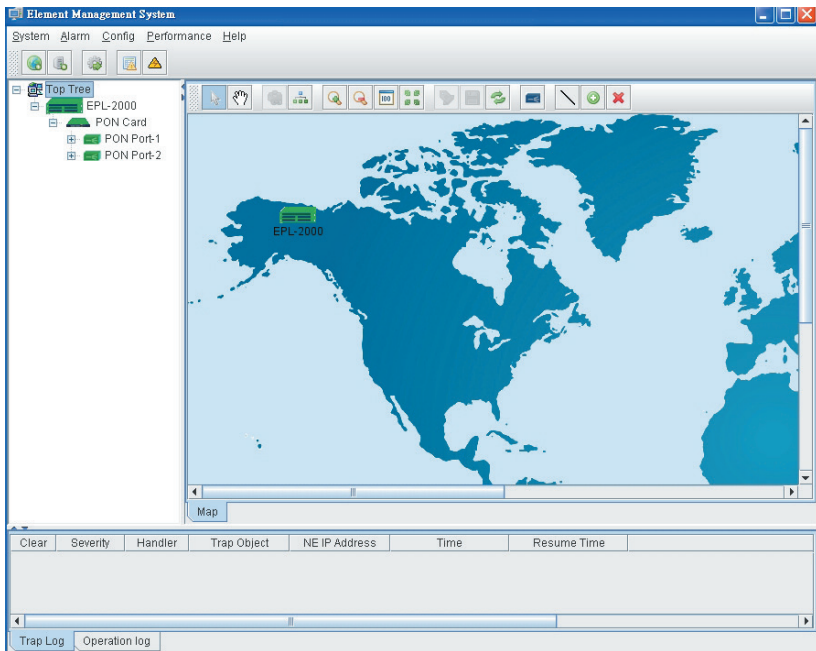
Figure 5-2 PL Server Icon

2. Double-click the PL Client icon on the PC desktop. It will pop-up a window to enter the user name and password. Please enter the default user name **"admin"** and password **"admin"**. The login screen in Figure 5-3 appears.



**Figure 5-3** PL Client Icon and Login Window

3. After entering the user name and password, the PL-EMS utility main screen will appear as in Figure 5-4.



**Figure 5-4** Main Screen of EPL-2000 GEAPON OLT

---

## **6. Customer Support**

Thank you for purchasing PLANET products. You can browse our online FAQ resource on the PLANET Website first to check if it could solve your issue. If you need more support information, please contact PLANET switch support team.

PLANET online FAQ :

<http://www.planet.com.tw/en/support/faq.php?type=1>

Switch support team mail address :

[support\\_switch@planet.com.tw](mailto:support_switch@planet.com.tw)

Copyright © PLANET Technology Corp. 2016.

Contents are subject to revision without prior notice.

PLANET is a registered trademark of PLANET Technology Corp. All other trademarks belong to their respective owners.