

**2 x PON Interface, 2 x GbE SFP + 2 x GbE RJ45,  
1 x MGT Port**

**EPL-2000**

Quick Installation Guide

# Table of Contents

1. Package Contents .....	3
2. Requirements .....	4
3. MySQL Server Installation .....	5
4. EMS Installation .....	9
5. Starting PLANET-EMS Management.....	11
6. Customer Support .....	13

---

## 1. Package Contents

Thank you for purchasing PLANET GEAPON OLT EPL-2000. The term "**GEAPON OLT**" refers to the Switch mentioned in this Quick Installation Guide.

The box should contain the following items:

- GEAPON OLT x 1
- MGB-PX20 SFP Transceiver x 2
- Quick Installation Guide x 1
- User's Manual CD x 1
- Power Cord x 1
- Two Rack-mounting Brackets with Attachment Screws x 1 (set)

If any item is found missing or damaged, please contact your local reseller for replacement.

---

## 2. Requirements

PLANET GEAPON OLT provides a GUI utility to manage the system; the following equipment is necessary for further management:

- Subscriber PC is installed with Ethernet NIC (Network Card)
- **MySQL** Software (Windows Platform) <http://dev.mysql.com/>
- **EMS** Software (Windows Platform)
- **Management Port** connection
  - Network cables - Use standard network (UTP) cables with RJ45 connectors
- **PON Port** connection
  - Fiber Transceiver - Slot with a 1000BASE-PX20 SFP PON transceiver
  - Fiber Cable - Use single mode of fiber (SC) cable

### 3. MySQL Server Installation

Install the MySQL software with the purpose of saving equipment’s alarm message, administrator message, system log, etc.

1. Please visit MySQL official website <http://dev.mysql.com/> and download MySQL-Installer-Community-5.5.50.0.msi.
2. Once the Setup program starts running, please click the “Next” button for starting installation.

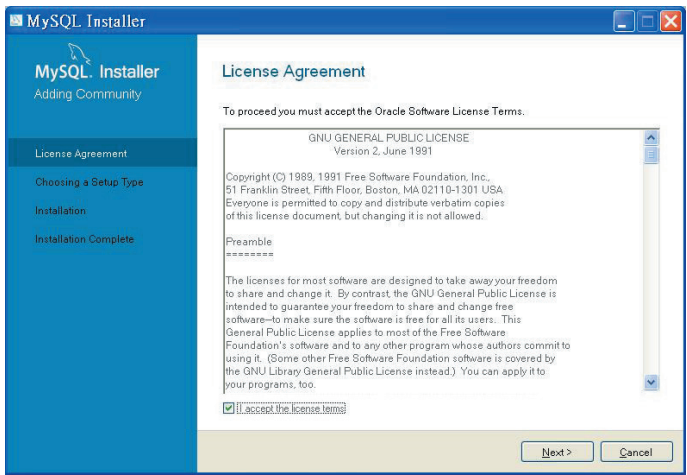


Figure 3-1 MySQL License Agreement Screen

3. Select Server only and click "Next" button.

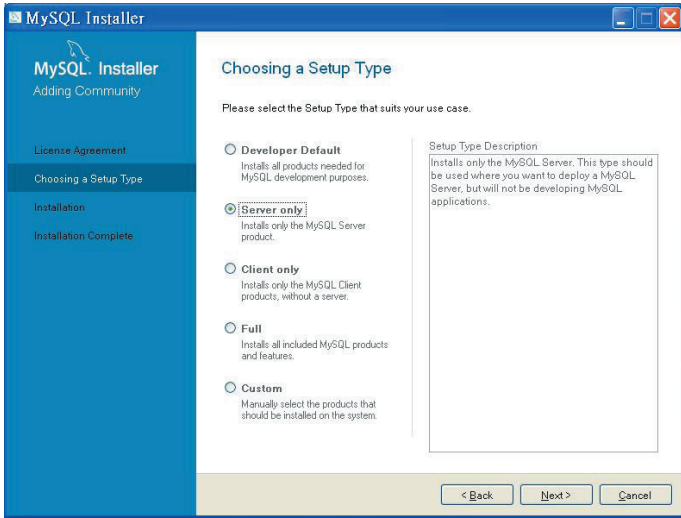


Figure 3-2 Selection of a Setup type

4. The Installation window appears. Please click the "Execute" button.

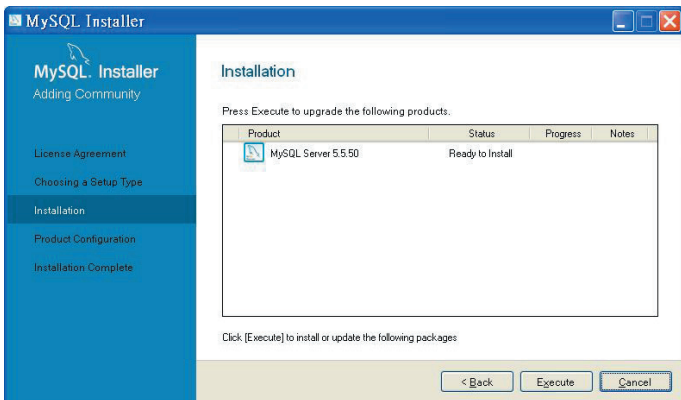


Figure 3-3 Selection of an Installation Type

- Please select a Server type. Keep the default setting of “Development Machine” and click the “Next” button.

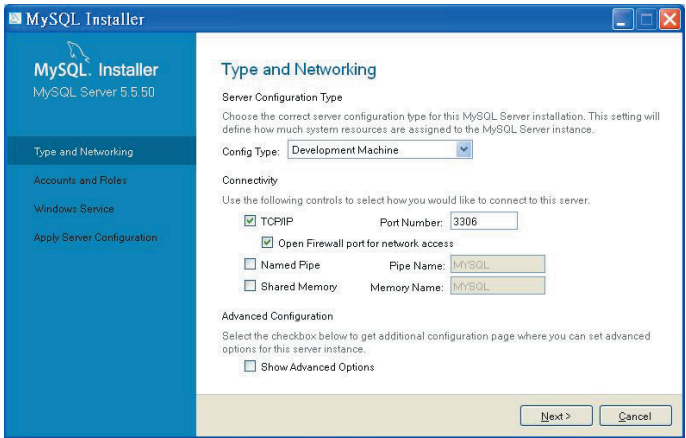


Figure 3-4 Selection of a Server Type

- Please set the security options. Type the password “1234” for the current root. Click the “Next” button.

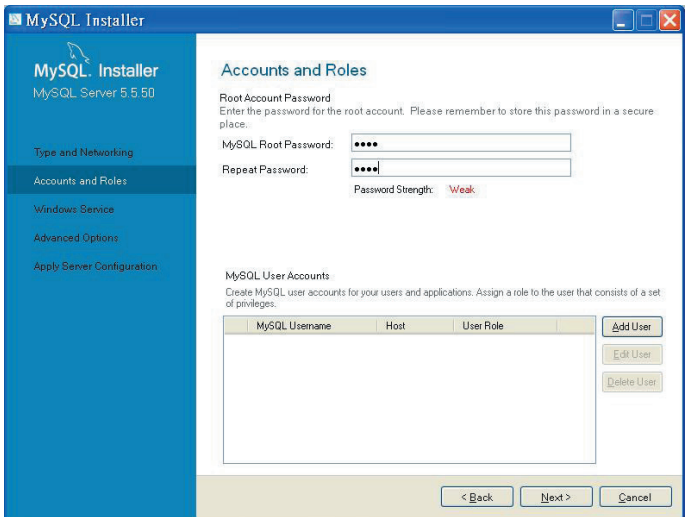


Figure 3-5 Setting of Security Options

7. Please keep the default setting and click the “Next” button.

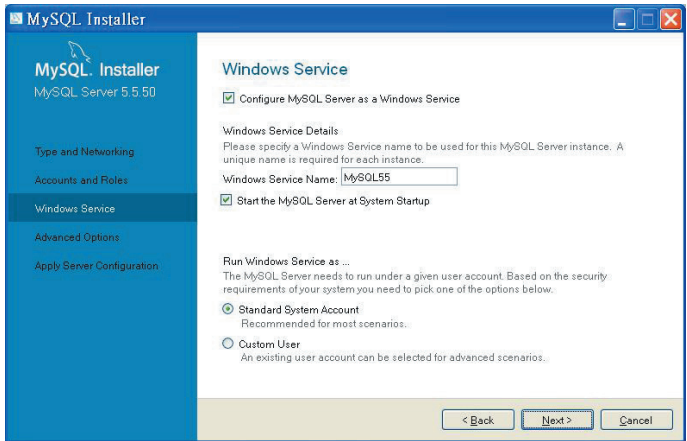


Figure 3-6 Selection of Windows Service

8. Please click the “Execute” button for starting the configuration. And then click the “Finish” button when the configuration is done.

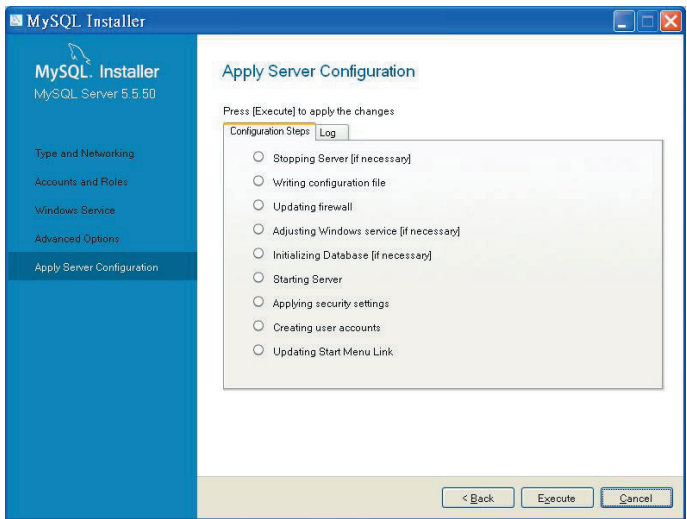


Figure 3-7 Start of Configuration



## 4. EMS Installation

1. Insert the bundled CD disk into the CD-ROM drive to launch the autorun program. Once completed, a welcome screen will appear. Click the "Utility" button and the InstallShield Wizard dialog box will appear as shown below.
2. Once the Setup program starts running, please click the **"Next"** button for starting installation.



Figure 4-1 EMS Setup Wizard Screen

3. During the installation, it will ask for the place to put the EMS folder.

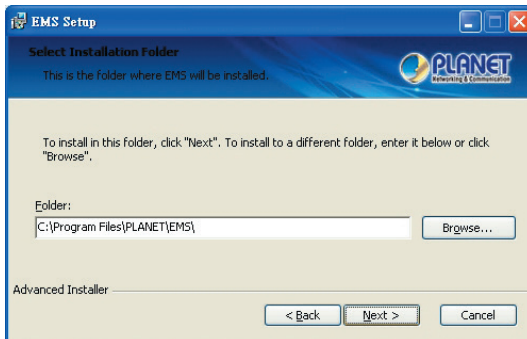


Figure 4-2 EMS Folder Installation Screen

4. Click "Install" for starting installation.

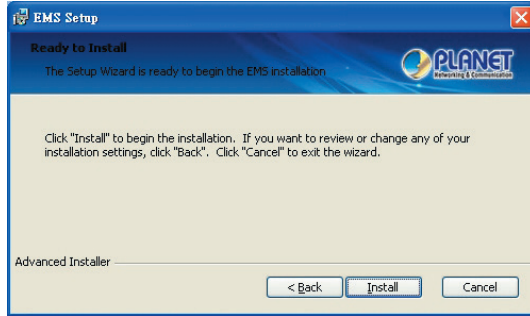


Figure 4-3 EMS Installation Screen

5. Click the "Finish" button for completing the EMS Setup.

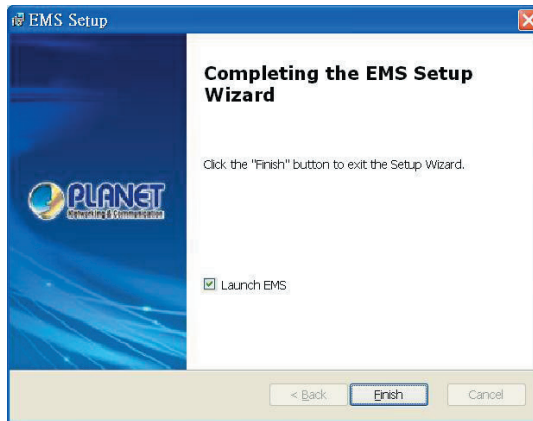


Figure 4-4 EMS Installation Completed Screen

6. When the EMS installation is done, the icon will appear on the desktop.



## 5. Starting PLANET-EMS Management

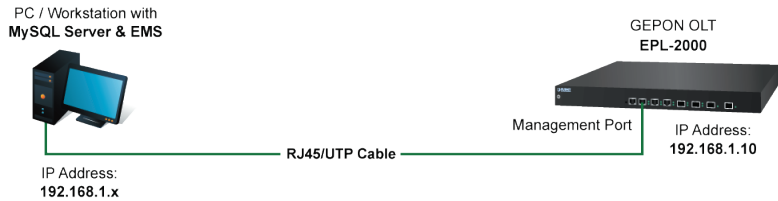


Figure 5-1 IP Management Diagram

The following shows how to start up the **EMS Management** of the GEAPON OLT. Please note the GEAPON OLT is configured through an Ethernet connection, making sure the manager PC must be set to the same **IP subnet address**.

For example, the default IP address of the GEAPON OLT is **192.168.1.10** (the factory default IP address), then the manager PC should be set to 192.168.1.x (where x is a number between 1 and 254, except 10), and the default subnet mask is 255.255.255.0.

### Logging to the GEAPON OLT

1. Double-click the PLANET-EMS icon on the PC desktop and a window will pop up asking you to enter the user name and password. Please enter the default user name "**admin**" and password "**admin**" as the login screen in Figure 5-2 appears.

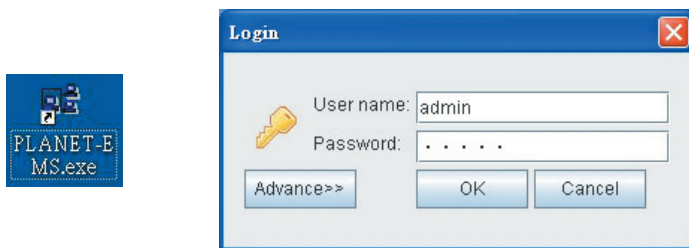
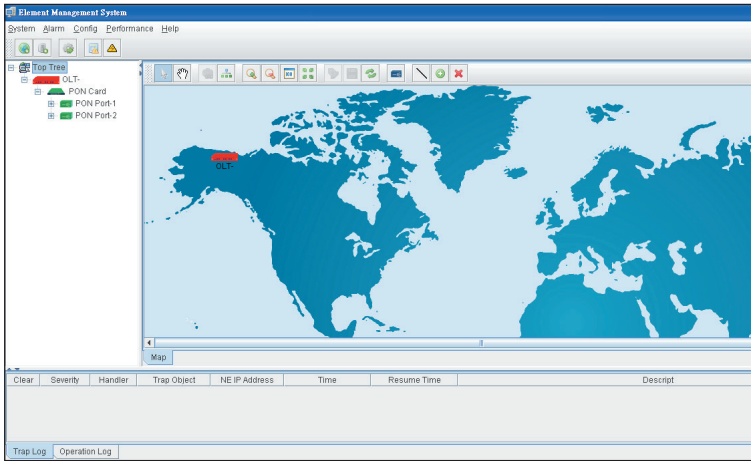


Figure 5-2 PLANET-EMS Icon and Login Window

2. After entering the user name and password, the PLANET-EMS utility main screen will appear as in Figure 5-3.



**Figure 5-3** Main Screen of EPL-2000 GEAPON OLT

---

## **6. Customer Support**

Thank you for purchasing PLANET products. The above steps show the simple installation and configuration of the EPL-2000. For further configurations of EMS Utility, please refer to the user manual in the CD-ROM. If you have further questions, you can browse our online FAQ resource on the PLANET Website first to check if it could solve your issue. If you need more support information, please contact PLANET switch support team.

PLANET online FAQ :

<http://www.planet.com.tw/en/support/faq.php?type=1>

Switch support team mail address :

[support\\_switch@planet.com.tw](mailto:support_switch@planet.com.tw)

---

Copyright © PLANET Technology Corp. 2016.

Contents are subject to revision without prior notice.

PLANET is a registered trademark of PLANET Technology Corp. All other trademarks belong to their respective owners.



