

## **3 Mega-Pixel Vari-Focal IR IP Camera**

**ICA-3350V / ICA-5350V**

Quick Installation Guide

# Table of Contents

Chapter 1. Introduction .....	3
1.1 Before Installation .....	3
1.2 System Requirements .....	3
Chapter 2. Physical Description and Installation.....	4
2.1 ICA-3350V 3 Mega-Pixel Vari-Focal Bullet IR IP Camera.....	4
2.1.1 ICA-3350V Package Content.....	4
2.1.2 ICA-3350V Physical Details.....	4
2.1.3 ICA-3350V Installation.....	6
2.2 ICA-5350V 3 Mega-Pixel Vandal Proof IR IP Camera.....	7
2.2.1 ICA-5350V Package Content.....	7
2.2.2 ICA-5350V Physical Details.....	7
2.2.3 ICA-5350V Installation.....	9
Chapter 3. Camera Windows Utility .....	10
Further Information .....	12

---

## Chapter 1. Introduction

Thank you for purchasing the PLANET 3 Mega-Pixel H.264 IR Outdoor PoE IP Camera. It is versatile and high image solution of surveillance application for day and night. The PLANET IP Camera support Multi-Profile function can stands for simultaneously video streams. These Network Cameras can generate H.264, MPEG-4 and M-JPEG streaming simultaneously to different clients. Moreover, the resolution can be different from one client to another. This state-of-art design is considerable to fit in various network environments.

### 1.1 Before Installation

Before installation, please be sure to read this quick installation guide and user's manual (CD) carefully to complete machine installation. This guide shows how to quick set up these cameras, unless model name specified terms "IP Camera" will be used for these three models.

### 1.2 System Requirements

CPU	Intel Dual Core 2.4GHz or higher
RAM	2GB (above Recommended)
Video RAM	256MB (above Recommended)
Display Resolution	1280x1024 24bits or above
Operating System	Windows XP / Vista / Win7
DirectX	10 or above
Network	Wired Ethernet 100Base-TX

## Chapter 2. Physical Description and Installation

### 2.1 ICA-3350V 3 Mega-Pixel Vari-Focal Bullet IR IP Camera

#### 2.1.1 ICA-3350V Package Content

Power Adapter x 1

Accessory Kit x 1

User's Manual CD x 1

Quick Installation Guide x 1

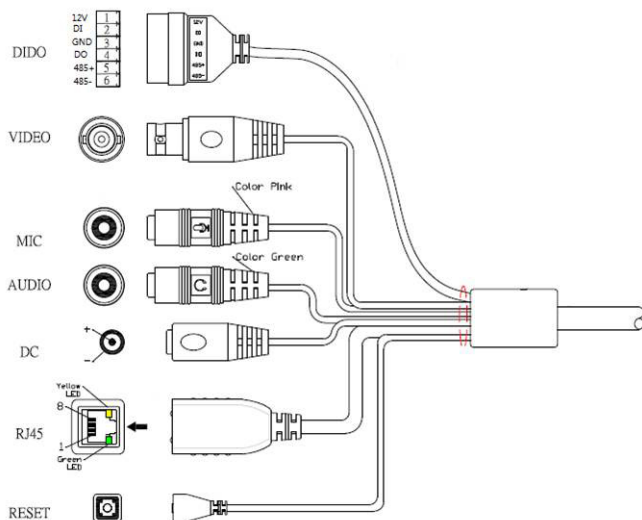



Note

If any of the above items are missing, please contact your dealer immediately.

#### 2.1.2 ICA-3350V Physical Details

ICA-3350V Connector



Interface	Description																					
<b>RJ45 LAN socket</b>	<p>Connects to your local area network by Ethernet cable.</p> <p>LAN LED (green color) This LED will be flashing while network accessing via Ethernet.</p> <p>Power LED (orange color) This LED is used to indicate whether DC power is on or not.</p>																					
<b>DC-in Jack</b>	<p>DC power input, connect to AC power adapter.</p> <div data-bbox="281 405 378 501" style="border: 1px solid black; padding: 5px; display: inline-block;">             Note         </div> <p>That supply the power to the Network Camera with the power adapter included in package.</p>																					
<b>RS-485 &amp; digital I/O</b>	<p>RS-485: Connect to a local keyboard controller. DI/ DO: Connect to sensor in and alarm out devices. Cable for I/O connectors:</p> <table border="1" data-bbox="281 635 992 900"> <thead> <tr> <th data-bbox="281 635 432 671">Name</th> <th data-bbox="432 635 591 671">Number</th> <th data-bbox="591 635 992 671">Function</th> </tr> </thead> <tbody> <tr> <td data-bbox="281 671 432 708">12VDC</td> <td data-bbox="432 671 591 708">1</td> <td data-bbox="591 671 992 708">DC 12V (50mA maximum)</td> </tr> <tr> <td data-bbox="281 708 432 745">DI</td> <td data-bbox="432 708 591 745">2</td> <td data-bbox="591 708 992 745">Digital signal input</td> </tr> <tr> <td data-bbox="281 745 432 782">GND</td> <td data-bbox="432 745 591 782">3</td> <td data-bbox="591 745 992 782">GND</td> </tr> <tr> <td data-bbox="281 782 432 818">DO</td> <td data-bbox="432 782 591 818">4</td> <td data-bbox="591 782 992 818">Digital signal output</td> </tr> <tr> <td data-bbox="281 818 432 855">485+</td> <td data-bbox="432 818 591 855">5</td> <td data-bbox="591 818 992 855">RS485 data +</td> </tr> <tr> <td data-bbox="281 855 432 900">485-</td> <td data-bbox="432 855 591 900">6</td> <td data-bbox="591 855 992 900">RS485 data -</td> </tr> </tbody> </table>	Name	Number	Function	12VDC	1	DC 12V (50mA maximum)	DI	2	Digital signal input	GND	3	GND	DO	4	Digital signal output	485+	5	RS485 data +	485-	6	RS485 data -
Name	Number	Function																				
12VDC	1	DC 12V (50mA maximum)																				
DI	2	Digital signal input																				
GND	3	GND																				
DO	4	Digital signal output																				
485+	5	RS485 data +																				
485-	6	RS485 data -																				
<b>MIC in (Audio in)</b>	Connect a microphone to the network camera.																					
<b>Audio out</b>	Connect a loud speaker to the network camera. This function is for voice alerting and two-way audio.																					
<b>Video out (BNC connector)</b>	<p>The Network Camera also provides composite video output. The video output function is only for easy installation to check view angle and focus. The output is not a Mega-pixel resolution. Furthermore, only "720p Mode" supports this function. "2 Mega Mode" does not support it. Please refer to Setting \ Video \ Common chapter.</p>																					

## Reset

This button is used to restore the all factory default settings. Sometimes restarting the device will make the system back to a normal state. However, if the system still got problems after restart, user can restore the factory default settings and install it again.

Restore the device:

1. While the Camera is ready and then press the button down continuously.
2. Hold the button at least 5 seconds and release it. Then the device has been restored to default settings and reboot again.



Note

Restoring the factory default setting will lose the all previous settings included IP address forever. User needs to run the IPWizard II program to search the device and configure it to let the device work properly again.

### 2.1.3 ICA-3350V Installation

1. Fix IR camera to desired location with wall mount fixture.
2. Plug-in Ethernet Cable into RJ-45 connector.

Connect an Ethernet cable to the LAN socket located on the Network Camera's back panel and attach it to the network.

3. Connect RS485 D+ and D- (if you need to control PT scanner).
4. Connect the attached power adapters to camera and heater (option/by model) and plug-in these adapters into power outlet.
5. Done.

## 2.2 ICA-5350V 3 Mega-Pixel Vandal Proof IR IP Camera

### 2.2.1 ICA-5350V Package Content

ICA-5350V x 1

Power Adapter x 1

Accessory Kit x 1

User's Manual CD x 1

Quick Installation Guide x 1

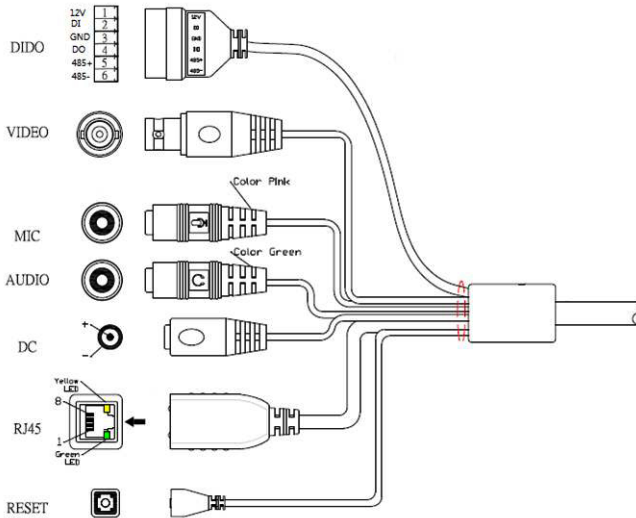



Note

If any of the above items are missing, please contact your dealer immediately.

### 2.2.2 ICA-5350V Physical Details

ICA-5350V Connector



Interface	Description																					
<b>RJ45 LAN socket</b>	Connects to your local area network by Ethernet cable. LAN LED (green color) This LED will be flashing while network accessing via Ethernet. Power LED (orange color) This LED is used to indicate whether DC power is on or not.																					
<b>DC-in Jack</b>	DC power input, connect to AC power adapter. <div data-bbox="281 395 378 491" style="border: 1px solid black; padding: 5px; display: inline-block;">               Note           </div> That supply the power to the Network Camera with the power adapter included in package.																					
<b>RS-485 &amp; digital I/O</b>	RS-485: Connect to a local keyboard controller. DI/ DO: Connect to sensor in and alarm out devices. Cable for I/O connectors: <table border="1" data-bbox="281 624 992 887" style="width: 100%; border-collapse: collapse; margin-top: 10px;"> <thead> <tr> <th data-bbox="281 624 432 657">Name</th> <th data-bbox="432 624 591 657">Number</th> <th data-bbox="591 624 992 657">Function</th> </tr> </thead> <tbody> <tr> <td data-bbox="281 657 432 691">12VDC</td> <td data-bbox="432 657 591 691">1</td> <td data-bbox="591 657 992 691">DC 12V (50mA maximum)</td> </tr> <tr> <td data-bbox="281 691 432 724">DI</td> <td data-bbox="432 691 591 724">2</td> <td data-bbox="591 691 992 724">Digital signal input</td> </tr> <tr> <td data-bbox="281 724 432 758">GND</td> <td data-bbox="432 724 591 758">3</td> <td data-bbox="591 724 992 758">GND</td> </tr> <tr> <td data-bbox="281 758 432 791">DO</td> <td data-bbox="432 758 591 791">4</td> <td data-bbox="591 758 992 791">Digital signal output</td> </tr> <tr> <td data-bbox="281 791 432 825">485+</td> <td data-bbox="432 791 591 825">5</td> <td data-bbox="591 791 992 825">RS485 data +</td> </tr> <tr> <td data-bbox="281 825 432 858">485-</td> <td data-bbox="432 825 591 858">6</td> <td data-bbox="591 825 992 858">RS485 data -</td> </tr> </tbody> </table>	Name	Number	Function	12VDC	1	DC 12V (50mA maximum)	DI	2	Digital signal input	GND	3	GND	DO	4	Digital signal output	485+	5	RS485 data +	485-	6	RS485 data -
Name	Number	Function																				
12VDC	1	DC 12V (50mA maximum)																				
DI	2	Digital signal input																				
GND	3	GND																				
DO	4	Digital signal output																				
485+	5	RS485 data +																				
485-	6	RS485 data -																				
<b>MIC in (Audio in)</b>	Connect a microphone to the network camera.																					
<b>Audio out</b>	Connect a loud speaker to the network camera. This function is for voice alerting and two-way audio.																					
<b>Video out (BNC connector)</b>	The Network Camera also provides composite video output. The video output function is only for easy installation to check view angle and focus. The output is not a Mega-pixel resolution. Furthermore, only "720p Mode" supports this function. "2 Mega Mode" does not support it. Please refer to Setting \ Video \ Common chapter.																					



## Reset

This button is used to restore the all factory default settings. Sometimes restarting the device will make the system back to a normal state. However, if the system still got problems after restart, user can restore the factory default settings and install it again.

Restore the device:

1. While the Camera is ready and then press the button down continuously.
2. Hold the button at least 5 seconds and release it. Then the device has been restored to default settings and reboot again.



Note

Restoring the factory default setting will lose the all previous settings included IP address forever. User needs to run the IPWizard II program to search the device and configure it to let the device work properly again.

### 2.2.3 ICA-5350V Installation

1. Fix IR camera to desired location with wall mount fixture.
2. Plug-in Ethernet Cable into RJ-45 connector.

Connect an Ethernet cable to the LAN socket located on the Network Camera's back panel and attach it to the network.

3. Connect RS485 D+ and D- (if you need to control PT scanner).
4. Connect the attached power adapters to camera and heater (option/by model) and plug-in these adapters into power outlet.
5. Done.

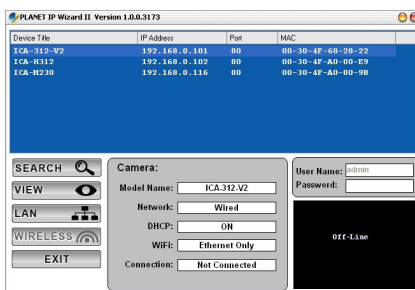
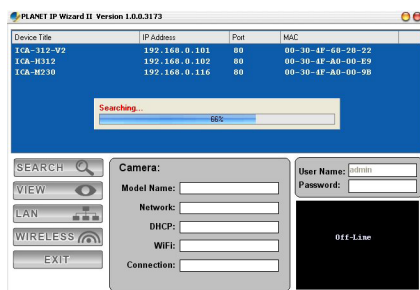
## Chapter 3. Camera Windows Utility

This chapter shows how to quick set up your 3 Mega-Pixel Vari-Focal IR IP Camera. The 3 Mega-Pixel Vari-Focal IR IP Camera is with the default settings. However to help you find the networked camera quickly the windows utility (PLANET IPWizard II) can search the IP cameras in the network that shall help you to configure some basic setting before you started advanced management and monitoring.

Please insert the bundle CD disk into your CD/DVD-ROM drive. When the welcome web page appears, please click your IP camera name on the IP camera list. Then click the PLANET IPWizard II hyperlink to start the PLANET IPWizard II.

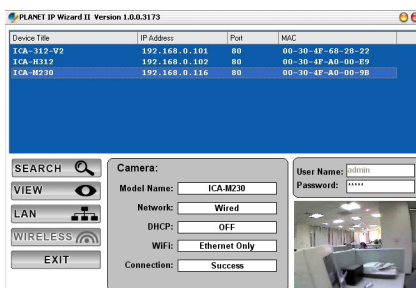
### Search function:

Press **"Search"** button. PLANET IPWizard II will list all networked devices in the LAN. If the IP camera doesn't be found, you may check this IP camera is connect to network properly and press the search button again.



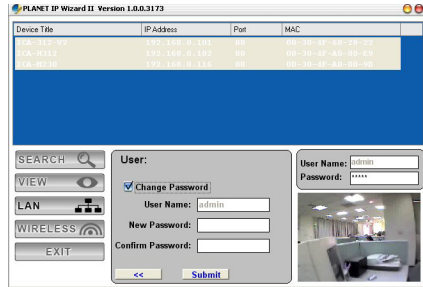
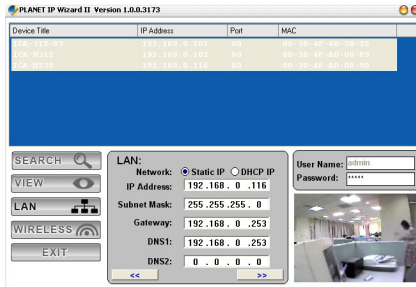
### View function:

If PLANET IPWizard II finds network devices, View button will be available. Please select the device you want to view and click the View button. Furthermore you could double click the left button of mouse to link to the network device by browser.



## LAN setting:

The utility featured with "LAN" setting function to help user to modify the IP parameters of the installed network devices. User can step by step to setup IP address, username and password.



### Note

1. If no IP address is assigned within 30 seconds, the networked device will automatically assign 192.168.0.20. User may now open your web browser, and key in **http://192.168.0.20** in the address bar of you web browser to logon IP Camera's web configuration page.
2. Power Line Frequency
  - If you found the video image is flash, you may need to choose 50 or 60 Hz frequency (depends on different country).
  - World wide power line frequency table is inside user's manual, Appendix.

After connected to networked device, the device will prompt for User name and Password. For the first time, please enter: **admin/admin** as username and password to continue Web Management.



---

Default User Name: **admin**  
Default Password: **admin**  
Default IP: **192.168.0.20** – if no DHCP existed in the network

If difficulty is met, please refer to the following steps to establish the connection:

- The networked device must be installed and powered ON.

If the networked device's default IP Address (**192.168.0.20**) is already used by another device, the other device must be turned OFF until the device is allocated a new IP Address during configuration.

## ***Further Information***

This guide is used to help you startup your IP Camera settings. It is also recommended to check the user manual in CD disk for more details of the system and user configuration.