



User's Manual

802.11n Wireless Presentation Gateway

▶ WPG-210N



Copyright

Copyright © 2014 by PLANET Technology Corp. All rights reserved. No part of this publication may be reproduced, transmitted, transcribed, stored in a retrieval system, or translated into any language or computer language, in any form or by any means, electronic, mechanical, magnetic, optical, chemical, manual or otherwise, without the prior written permission of PLANET.

PLANET makes no representations or warranties, either expressed or implied, with respect to the contents hereof and specifically disclaims any warranties, merchantability or fitness for any particular purpose. Any software described in this manual is sold or licensed "as is". Should the programs prove defective following their purchase, the buyer (and not PLANET, its distributor, or its dealer) assumes the entire cost of all necessary servicing, repair, and any incidental or consequential damages resulting from any defect in the software. Further, PLANET reserves the right to revise this publication and to make changes from time to time in the contents hereof without obligation to notify any person of such revision or changes.

All brand and product names mentioned in this manual are trademarks and/or registered trademarks of their respective holders.

Federal Communication Commission Interference Statement

This equipment has been tested and found to comply with the limits for a Class B digital device, pursuant to Part 15 of FCC Rules. These limits are designed to provide reasonable protection against harmful interference in a residential installation. This equipment generates, uses, and can radiate radio frequency energy and, if not installed and used in accordance with the instructions, may cause harmful interference to radio communications. However, there is no guarantee that interference will not occur in a particular installation. If this equipment does cause harmful interference to radio or television reception, which can be determined by turning the equipment off and on, the user is encouraged to try to correct the interference by one or more of the following measures:

1. Reorient or relocate the receiving antenna.
2. Increase the separation between the equipment and receiver.
3. Connect the equipment into an outlet on a circuit different from that to which the receiver is connected.
4. Consult the dealer or an experienced radio technician for help.

FCC Caution

To assure continued compliance, for example, use only shielded interface cables when connecting to computer or peripheral devices. Any changes or modifications not expressly approved by the party responsible for compliance could void the user's authority to operate the equipment.

This device complies with Part 15 of the FCC Rules. Operation is subject to the Following two conditions: (1) This device may not cause harmful interference, and (2) this Device must accept any interference received, including interference that may cause undesired operation.

Federal Communication Commission (FCC) Radiation Exposure Statement

This equipment complies with FCC radiation exposure set forth for an uncontrolled environment. In order to avoid the possibility of exceeding the FCC radio frequency exposure limits, human proximity to the antenna shall not be less than 20 cm (8 inches) during normal operation.

CE mark Warning

This is a class B device, in a domestic environment; this product may cause radio interference, in which case the user may be required to take adequate measures.

R&TTE Compliance Statement

This equipment complies with all the requirements of DIRECTIVE 1999/5/CE OF THE EUROPEAN PARLIAMENT AND THE COUNCIL OF 9 March 1999 on radio equipment and telecommunication terminal Equipment and the mutual recognition of their conformity (R&TTE). The R&TTE Directive repeals and replaces in the directive 98/13/EEC (Telecommunications Terminal Equipment and Satellite Earth Station Equipment) As of April 8, 2000.

Safety

This equipment is designed with the utmost care for the safety of those who install and use it. However, special attention must be paid to the dangers of electric shock and static electricity when working with electrical equipment. All guidelines of this and of the computer manufacture must therefore be allowed at all times to ensure the safe use of the equipment.

EU Countries Intended for Use

The ETSI version of this device is intended for home and office use in Austria Belgium, Denmark, Finland, and France (with Frequency channel restrictions). Germany, Greece, Ireland, Italy, Luxembourg .The Netherlands, Portugal, Spain, Sweden and United Kingdom.

The ETSI version of this device is also authorized for use in EFTA member states Iceland, Liechtenstein, Norway and Switzerland.

WEEE regulation



To avoid the potential effects on the environment and human health as a result of the presence of hazardous substances in electrical and electronic equipment, end users of electrical and electronic equipment should understand the meaning of the crossed-out wheeled bin symbol. Do not dispose of WEEE as unsorted municipal waste and have to collect such WEEE separately.

Revision

User Manual for PLANET 802.11n Wireless Presentation Gateway

Model: WPG-210N

Rev: 1.1 (April, 2014)

Part No. EM-WPG-210N_v1.1 (2081-E60060-001)

Contents

Chapter 1.PRODUCT INTRODUCTION	6
1.1 Package Contents	6
1.2 Product Description	6
1.3 Product Features	9
1.4 Product Specifications	10
Chapter 2.HARDWARE INSTALLATION	12
2.1 Hardware Description	12
2.1.1 The Front Panel	12
2.1.2 LED Indications.....	12
2.1.3 The Rear Panel.....	12
2.2 Hardware Connection	13
Chapter 3.WINDOWS CLIENT UTILITY – WPG	16
3.1. Starting Program	16
3.2. Control Panel	17
3.2.1. Show Receiver Information	17
3.2.2. Web Admin	18
3.2.3. Search Receiver Device	18
3.2.4. Select Projection Source	19
3.2.5. Projection Quality	20
3.2.6. Projection Mode.....	21
3.2.7. Projection Aspect Ratio	22
3.2.8. Advanced Screen Capture	23
3.2.9. Send Audio to Display	24
3.2.10. Auto Power Management.....	25
3.2.11. Auto WiFi Connect.....	26
3.2.12. Make WPG Token.....	26
3.2.13. Copy Application to Desktop.....	28
3.2.14. About	29
3.2.15. Exit.....	30
Chapter 4.MAC OS X CLIENT UTILITY	31
4.1. Mac OS X Quick Connection	31
4.2. Download Mac OS X Client Utility	33
4.3. Main User Interface	36
4.4. Screen Projection.....	36
4.5. MAC Audio Projection.....	37
Chapter 5.WEB UI MANAGEMENT	42
5.1. WPG-210N Homepage.....	42
5.2. Download	43
5.3. Conference Control.....	44

5.4. Admin	45
5.4.1. System Status.....	45
5.4.2. Network Setup	47
5.4.3. OSD Setup.....	51
5.4.4. Device Setup	52
5.4.5. Change Passwords	53
5.4.6. Reset to Default.....	53
5.4.7. Firmware Upgrade.....	54
5.4.8. Reboot System	55
Appendix A: Configuring the PCs	57
Appendix B: FAQ	61

Chapter 1. PRODUCT INTRODUCTION

1.1 Package Contents

The following items should be contained in the package:

WPG-210N × 1



Antenna × 2



5V DC Power adapter +
World-Wide Plug Set × 1



Wall-mount Kit x 1



CD-ROM × 1



Quick Installation Guide × 1



If there is any item missing or damaged, please contact the seller immediately.

1.2 Product Description

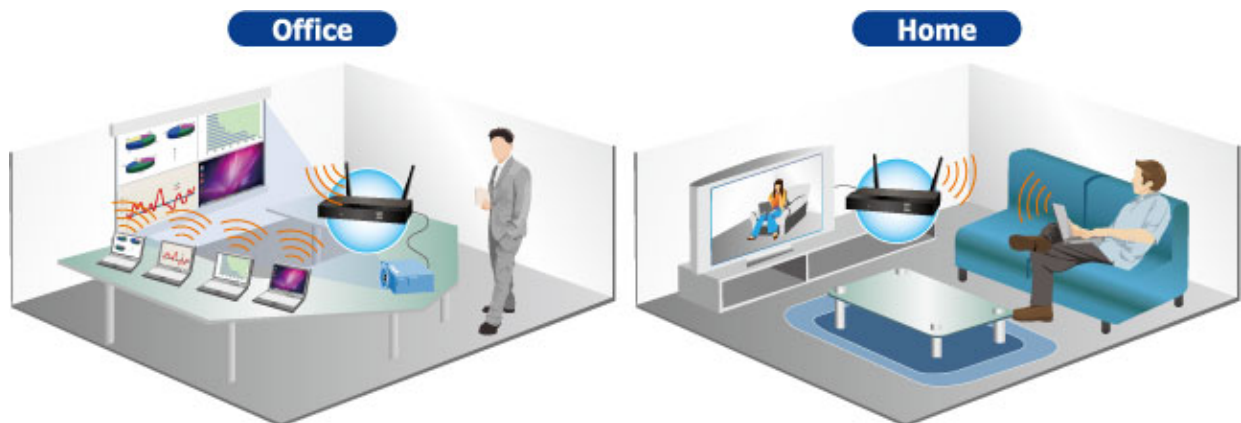


Delivering Smooth Presentations Wirelessly

PLANET WPG-210N is a wireless presentation gateway based on **IEEE 802.11n** technology. It is equipped with both **VGA** and **HDMI** video output interfaces and one 10/100Mbps Ethernet port for LAN connection. With the hardware decoding capability, the WPG-210N can project high-definition video on the screen and audio through wireless or wired LAN connections. It facilitates multiple users to freely display the presentations, images and videos via wirelessly connecting to a projector or LCD TV without swapping lots of cables.

Near Real-time High-quality Video and Audio Projection

The WPG-210N supports **near real-time** [30fps (frames per second)] image screen speed and audio projection disregarding video format and resolution. Thus, the WPG-210N can be used not only for **office presentation** but also for **home entertainment**. Home users can easily share the multimedia on the big monitor / screen with friends without cable hassle. Furthermore, the WPG-210N output resolution supports up to 1440 x 900 (WXGA+), which performs high quality display in presentation or full-motion video.



Dual Video Output Interfaces

To deliver a perfect presentation solution, the WPG-210N is equipped with two types of video output interfaces: the VGA and HDMI connectors compatible with most of the popular display devices. You can connect it to any type of projector, LCD TV, or other large screen display wirelessly right away.



4-to-1 Split Screen Projection

With this 4-to-1 split screen feature, the WPG-210N allows up to four PC / Laptop screens to be projected through one projector at the same time. Therefore, the participants can easily do side-by-side comparison from four PCs / Laptops to increase meeting efficiency.

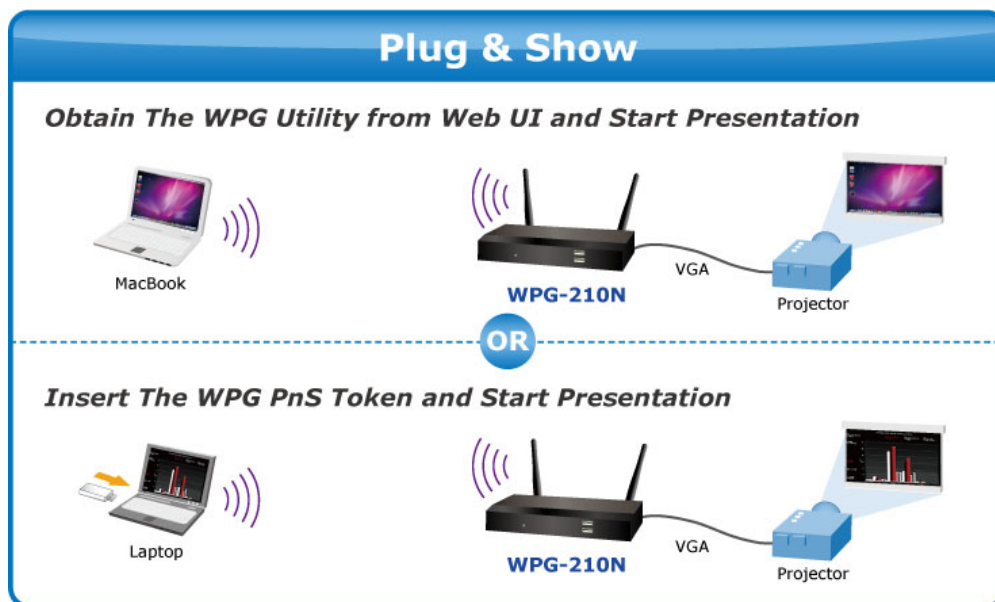


High-speed 802.11n Wireless Connectivity

The WPG-210N features the latest IEEE 802.11n technology to provide improved wireless data rate speed up to 300Mbps and wider coverage. The incredible wireless speed makes it ideal for handling high bandwidth video stream, VoIP and data streams at the same time stably and smoothly. It is also backward compliant with 802.11g and 802.11b standards and thus, it is no need to change the existing network for maintaining connectivity.

Easy to Use, Plug & Show

The embedded Windows-based utility enables the connected users to directly download the utility from the WPG-210N web UI or simply execute the utility from the created USB token. It offers the most convenient way for the new user to access the presentation in seconds. Just link the PC / laptop to the WPG-210N through wireless or Ethernet and the wireless projection can be performed via the connected projector easily.



Internet / Intranet Connectivity

The WPG-210N is also a Wireless Access Point. The 10/100Mbps LAN port and 11n wireless performance ensures the participants in the meeting are able to access the Internet and Intranet all the time, even while wireless presentations are projecting.

AP Client Mode

You can enable the AP-Client Mode function to let the WPG-210N join the existing Access Point through Wi-Fi. This feature provides the flexibility of wireless network deployment in enterprise environment.

Remote Desktop

Plug standard USB keyboard or mouse into the USB port on the front panel of the WPG-210N and you can control your PC remotely. You don't have to stand still by the side of a PC or the WPG-210N, thus making your presentation easily and freely.



1.3 Product Features

- Wirelessly Project Multimedia with Laptops and Macs
- Up to 30fps Network Screen Projection
- VGA / 720p HDMI output
- 4-to-1 Split Screen Projection
- Audio / Video Streaming
- Plug & Show
- 802.11n Wi-Fi AP and AP-client mode
- Mouse / Keyboard remote operation
- Web browser management
- Windows XP / Vista / 7 / 8, Mac OS X support
- Multiple users access
- Compact size for convenient installation and placement

1.4 Product Specifications

Product	WPG-210N	
Hardware Specifications		
Interfaces	Video	VGA Port: D-Sub 15-pin female port HDMI 1.2
	Audio Out	2.5mm stereo jack
	LAN	10/100Base-TX RJ-45
	Wireless LAN	IEEE 802.11n 300Mbps
Antenna	Gain	2 x 2dBi RP-SMA detachable antenna
	Orientation	Omni-directional
LED Indicators	Power	
Material	Metal	
Dimensions (W x D x H)	160 x 60.3 x 30mm	
Weight	312g	
Power	External Power adaptor 5V DC input 2.6A	
Wireless Interface Specifications		
Standard	Compliance with IEEE 802.11n Backward compatible with IEEE 802.11b/g	
Frequency Band	2.412 ~ 2.4835GHz	
Wireless Data Rate	Up to 300Mbps	
Wireless Channel	America/ FCC: 2.412~2.462GHz (11 Channels) Europe/ ETSI: 2.412~2.472GHz (13 Channels) Japan/ TELEC: 2.412~2.4835GHz (14 Channels)	
Receive Sensitivity	802.11b: 11M -76 dBm 802.11g: 54M -67dBm 802.11n: 65M (HT20) -64dBm 150M (HT40) -61dBm	
Wireless Security	IEEE Standard 64/128 bit WEP / WPA / WPA2-PSK	
Operation Mode	AP (Access Point) AP Client	
Video Display		
Supported PC / Laptop Resolution	SVGA (800x600) / XGA (1024x768) SXGA (1280x1024) / WXGA (1280x768) WSXGA (1440x900, 1600x1024) / UXGA (1600x1200) WUXGA (1920x1200) / QXGA (2048x1536) / Others	
Supported Output Resolution	VGA: SVGA (800x600) / XGA (1024x768) WXGA(1280x768) / WXGA(1280x800) WXGA (1360x768) / WXGA+ (1440x900) HDMI: 720p (1280x720)	

System Management	
Protocol	TCP/IP
IP Configuration	Automatic: DHCP Manual: Static IP address
Management	Web-Based configuration
Supported Windows Account Right	Administrators Limited User Guest
Supported Operation System	Windows XP / Vista / 7 / 8 Windows Mobile 5/6 Mac OS X 10.5 and above
Language Support	English Tradition Chinese Simplified Chinese Japanese Korean
Standard Conformance	
IEEE Standards	IEEE 802.11n (2T2R, up to 300Mbps) IEEE 802.11g IEEE 802.11b IEEE 802.3 10Base-T IEEE 802.3u 100Base-TX
Environment	
Temperature	Operating: 0 ~ 40 degrees C Storage: -10 ~ 60 degrees C
Humidity	Operating: 10 ~ 90% (non-condensing) Storage: 10 ~ 80% (non-condensing)

Chapter 2. HARDWARE INSTALLATION

Please follow the instructions below to build the wireless network connection between the WPG-210N, display equipment and your computers.

2.1 Hardware Description

2.1.1 The Front Panel

The front panel provides a simple interface monitoring the wireless presentation gateway. [Figure 2-1](#) shows the front panel of WPG-210N.

Front Panel



Figure 2-1 WPG-210N Front Panel

- USB Port:** USB 2.0 Ports for USB keyboard and mouse.
 User can control the projecting PC remotely by simply plugging standard USB keyboard or mouse into WPG-210N.

2.1.2 LED Indications

The front panel LEDs indicate instant status of system power and help monitor and troubleshoot when needed. The table below shows the LED indications of the Wireless Present Gateway.

LED (Green)	Description
On	Power On
Off	Power Off

2.1.3 The Rear Panel

Rear Panel

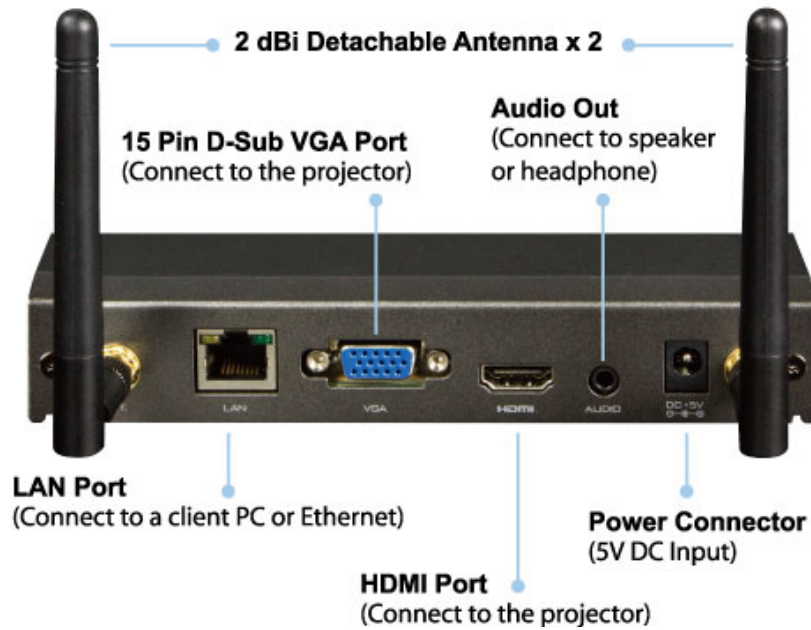


Figure 2-2 the WPG-210N Rear Panel

2.2 Hardware Connection

Step 1. Please turn off your projector first, and connect **HDMI** or **D-sub** cable of the projector to WPG-210N. Then you can power on WPG-210N.

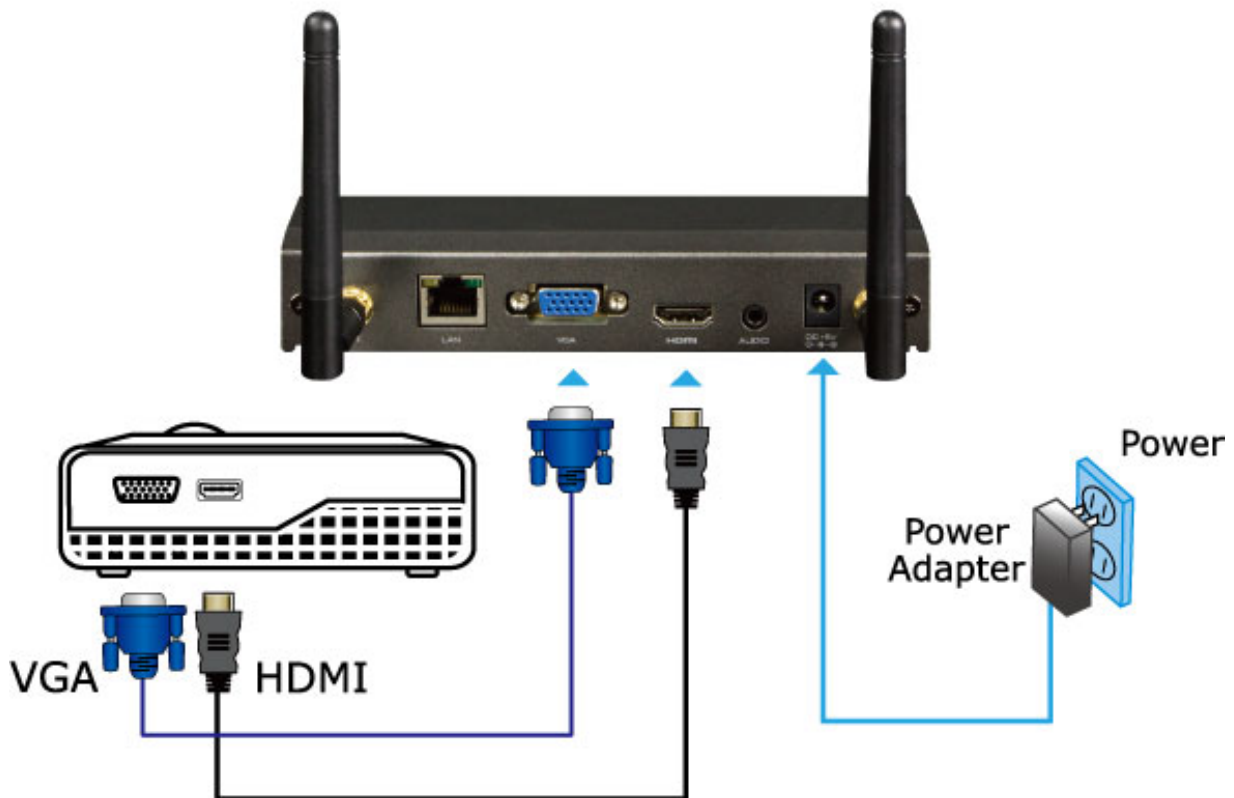


Figure 2-3 VGA / HDMI interface connection

Step 2. When the projector shows the default screen as shown below, it indicates WPG-210N is ready now.



Figure 2-4 Projector default screen

Step 3. Use your laptop or desktop for site surveying the wireless signal of WPG-210N, and connect your PC with it wirelessly. The default SSID is **WPG-210N**.

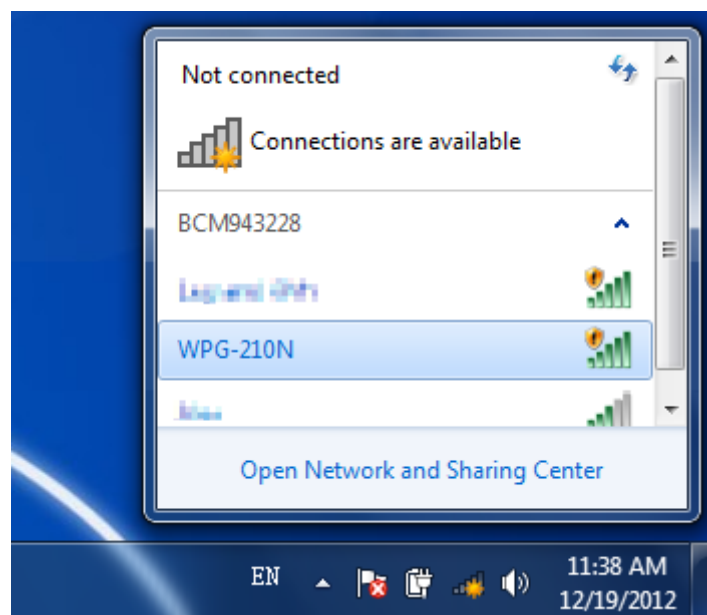


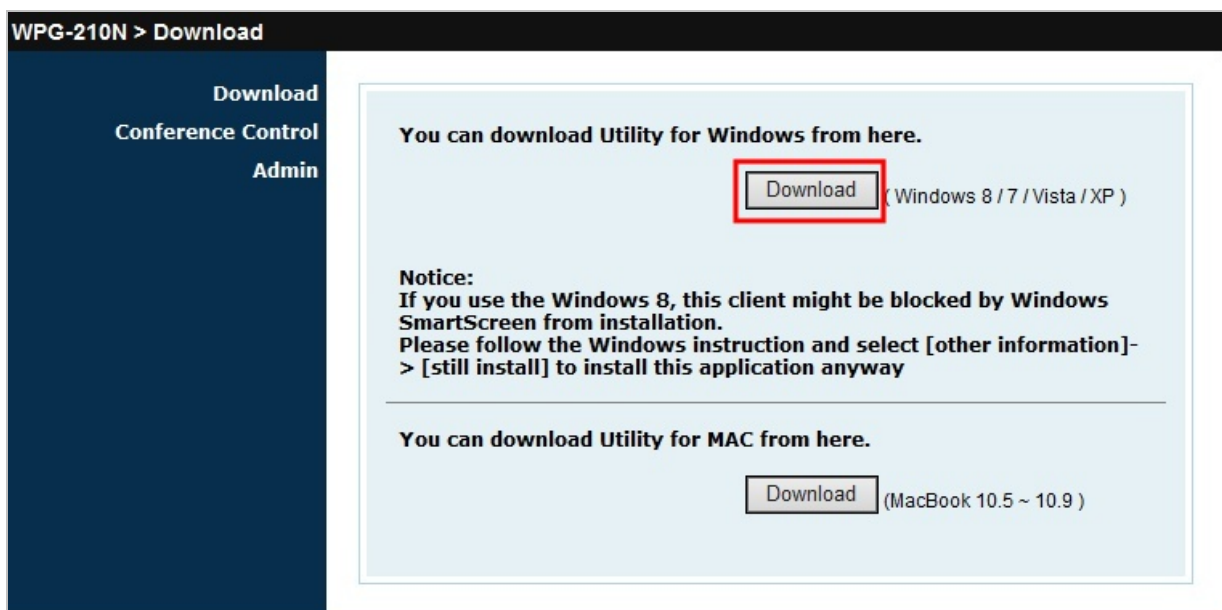
Figure 2-5 Windows platform wireless site survey

Step 4. Open the web browser and it will redirect to WPG-210N web page automatically, or you can enter the default IP address **192.168.1.1** to access it.



Figure 2-6 WPG-210N Web UI screenshot


Now you can configure the WPG-210N and download the client utility (**WPG**) of Windows 8/7/Vista/XP or Windows Mobile 5/6 via web UI. For further information of the configurations, please refer to the following chapters.



Chapter 3. WINDOWS CLIENT UTILITY – WPG

3.1. Starting Program

After installing **WPG (Wireless Presentation Gateway)** utility downloaded from the web page of WPG-210N, please follow the steps below to start.

Step 1. Click WPG icon  on the desktop to execute the program.

Step 2. WPG will start to search the available access points automatically if you have not connected your PC to WPG-210N manually. When the WPG-210N is displayed in the list, please click it to connect and then enter the Login Code shown on the projector screen.

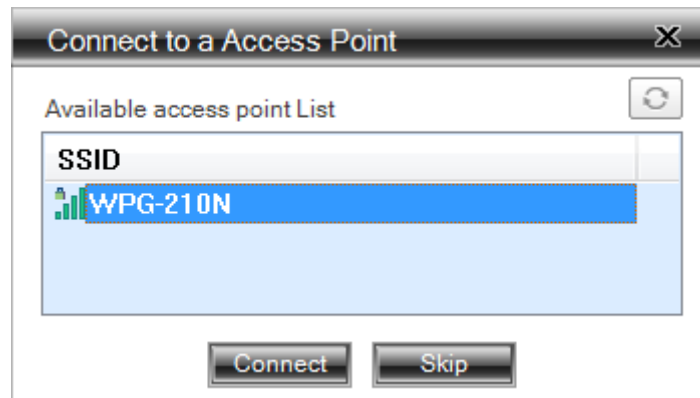


Figure 3-1 WPG Utility – Access Point connection



Figure 3-2 WPG Utility – Access Point Login


Step 3. Click the  button to start projection



Figure 3-3 WPG Utility – Control Panel

3.2. Control Panel

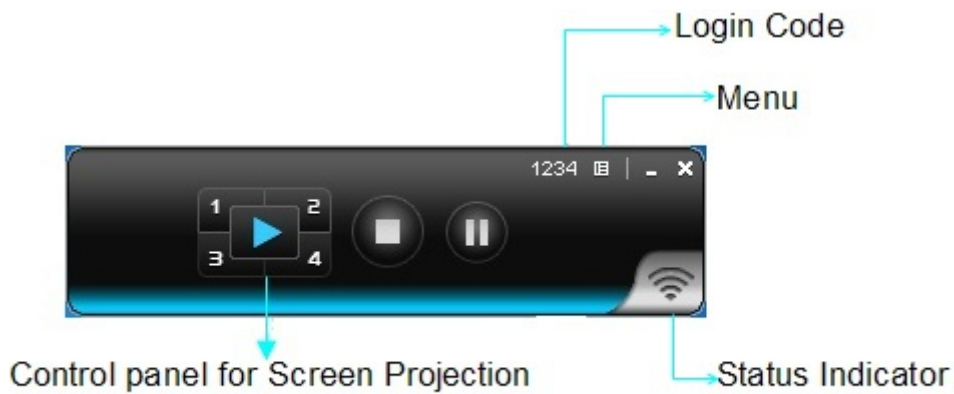









Figure 3-4 WPG Utility – Control Panel function Introduction

Button	Description	Button	Description
	Start Full Screen Projection		Project to Split No. 4
	Project to Split No. 1		Stop projecting
	Project to Split No. 2		Freeze The Projection Screen
	Project to Split No. 3		

Please refer to the following sections for detailed instructions of the menu.

3.2.1. Show Receiver Information

Click “**Show Receiver Information**” and it will display the Receiver Information, such as WiFi Name, IP Address and code on the upper of desktop, it will close automatically after 30 seconds.

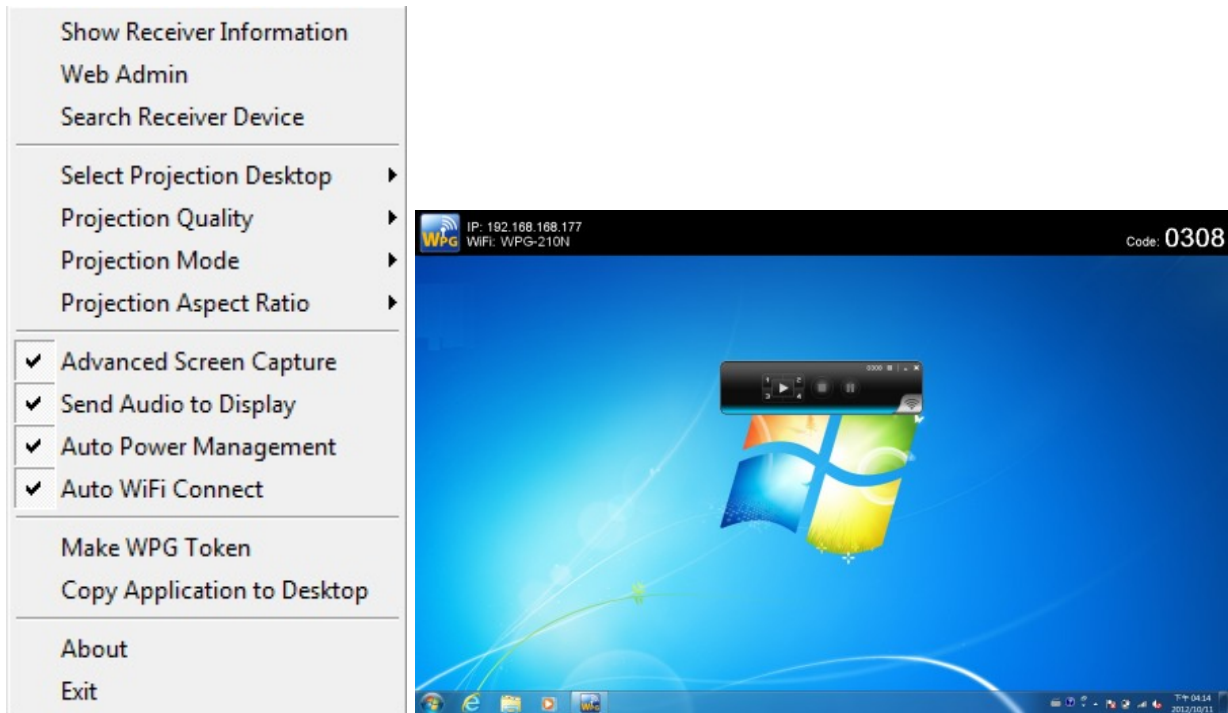


Figure 3-5 WPG Utility – Show Receiver Information

3.2.2. Web Admin

Click “**Web Admin**” to open the web UI page of WPG-210N. With regard to the web management UI page, please refer to the next chapter.

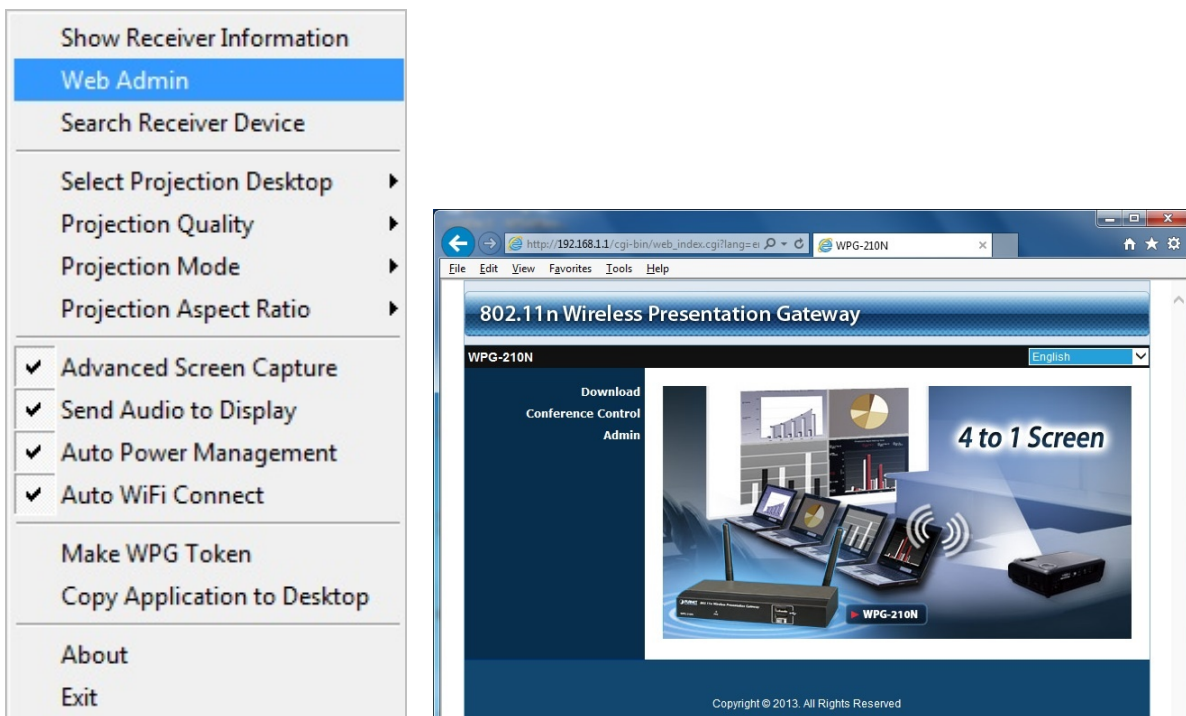


Figure 3-6 WPG Utility – Web Admin

3.2.3. Search Receiver Device

Click “**Search Receiver Device**”, it will disconnect from current receiver and search the receiver again.

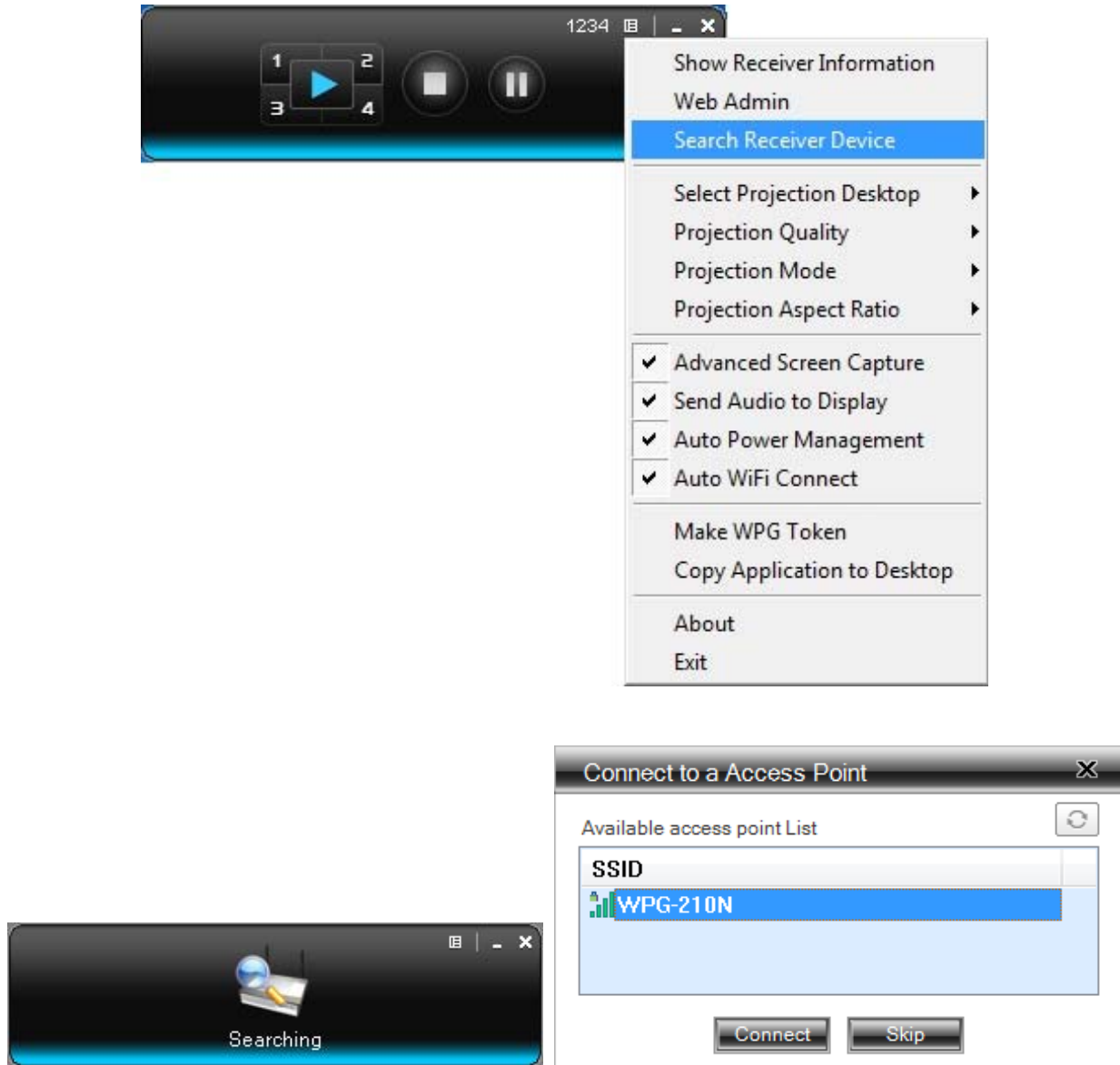


Figure 3-7 WPG Utility –Search Receiver Device

3.2.4. Select Projection Source

Click the “Select Projection Source” then you can select to project the main screen of desktop or the virtual extended screen.

Object	Description
Main Desktop	When “Main Desktop” is selected, WPG-210N will project out the main desktop screen.
Extended Desktop	When “Extended Desktop” is selected, WPG-210N will project out the virtual screen. The virtual second monitor is invisible, but it is just right of the main one. Just pull the presentation item out of right side screen, and you’ll see it appears on the projector screen.

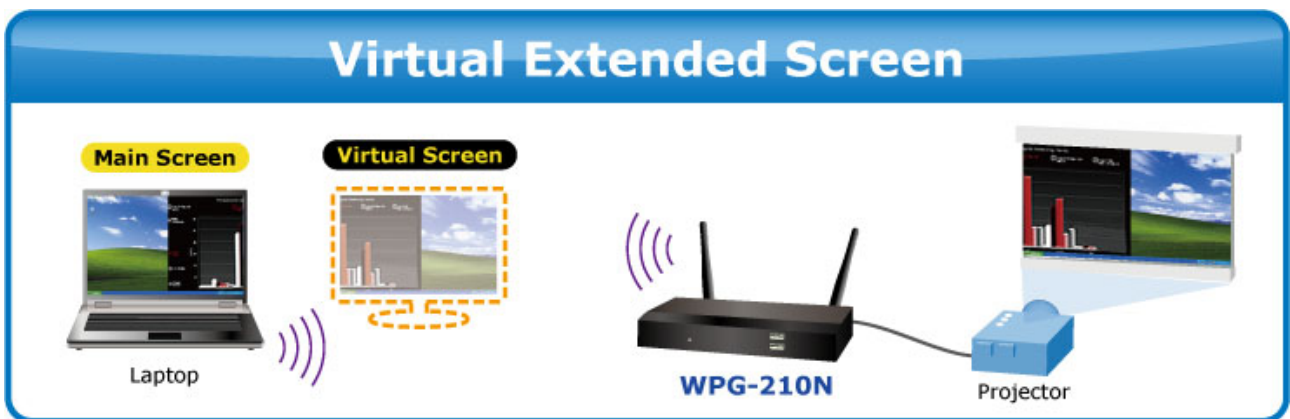
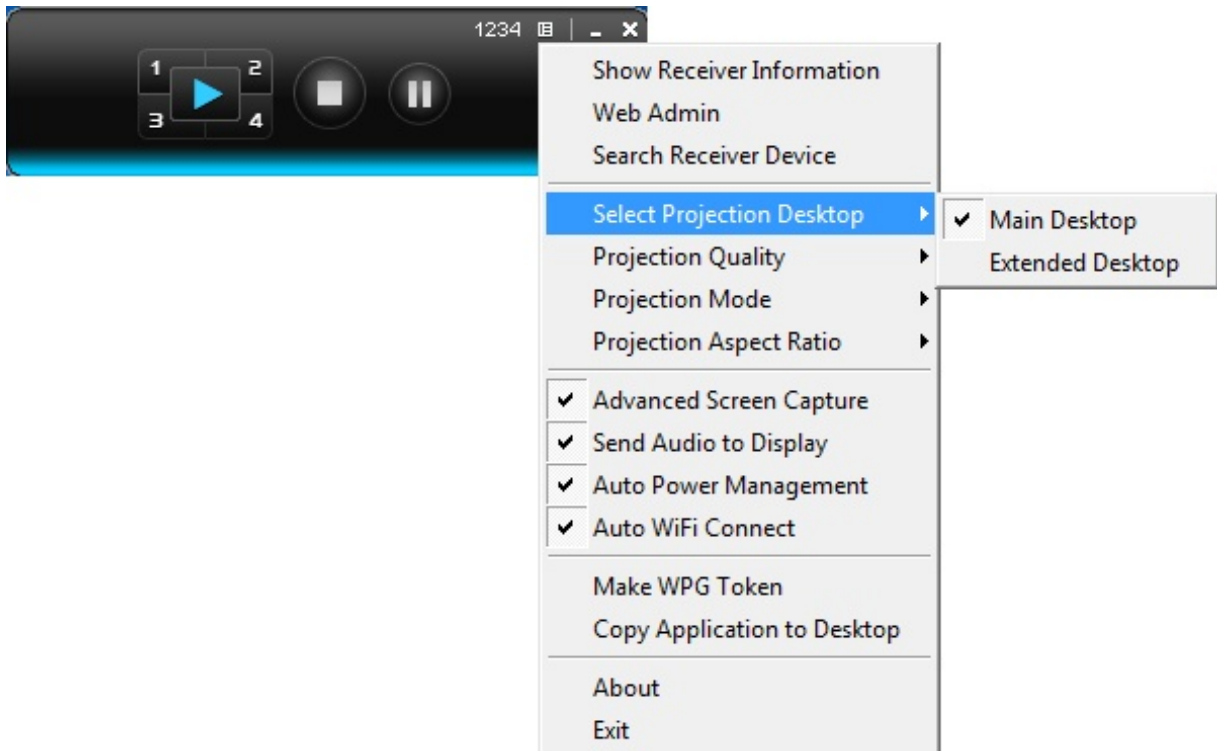


Figure 3-8 Virtual Extended Screen



For Windows XP system, before starting the Extended Desktop screen projection, please install the “**VDD.exe**” (Virtual Display Driver) first on your computer. Please find the software in the CD-ROM.



For Windows 7/Vista Starter edition, it can't support extended screen.

3.2.5. Projection Quality

Click the “**Projection Quality**”, choose “Normal” for faster projection speed with lower screen image quality,

and “Best” for clear screen image quality but slower projection speed.

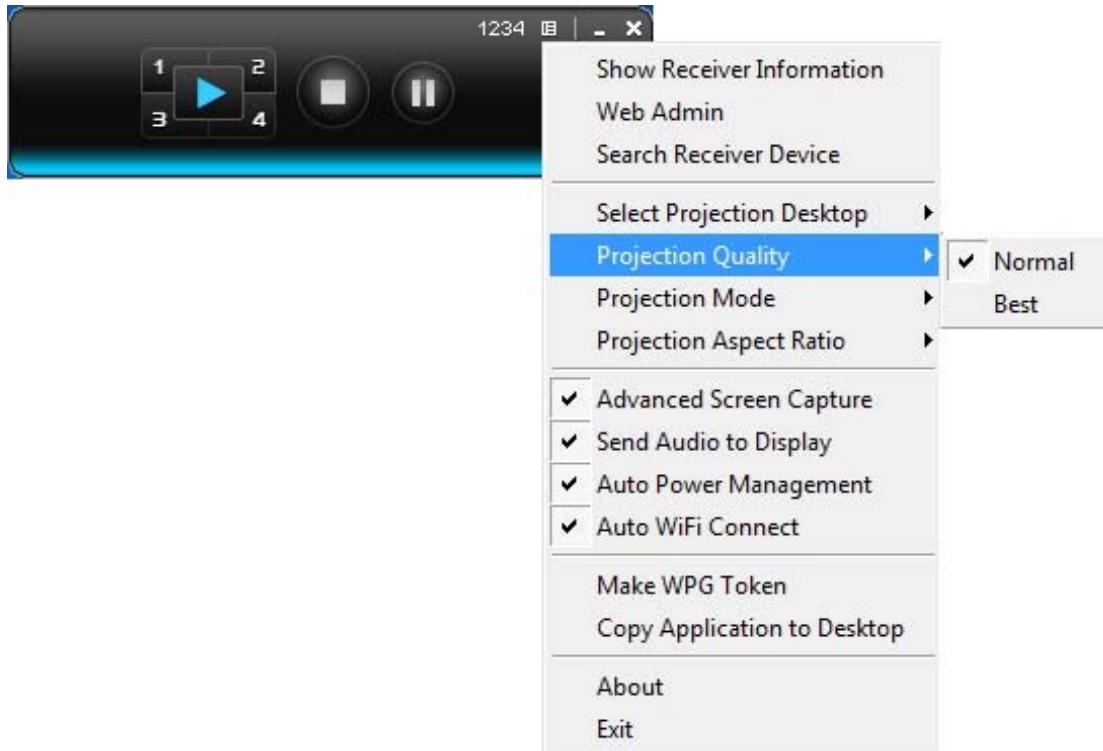


Figure 3-9 WPG Utility – Projection Quality

3.2.6. Projection Mode

The Projection Mode provides the option to support “**Presentation Mode**” and “**Video Mode**”.

- For the “**Presentation Mode**”, it will always keep the shortest latency to provide the most responsive operation performance
- For the “**Video Mode**”, it will trigger the longer latency but much smooth performance when you are watching video, and change back to shortest latency mode when it detects you are moving the mouse cursor.

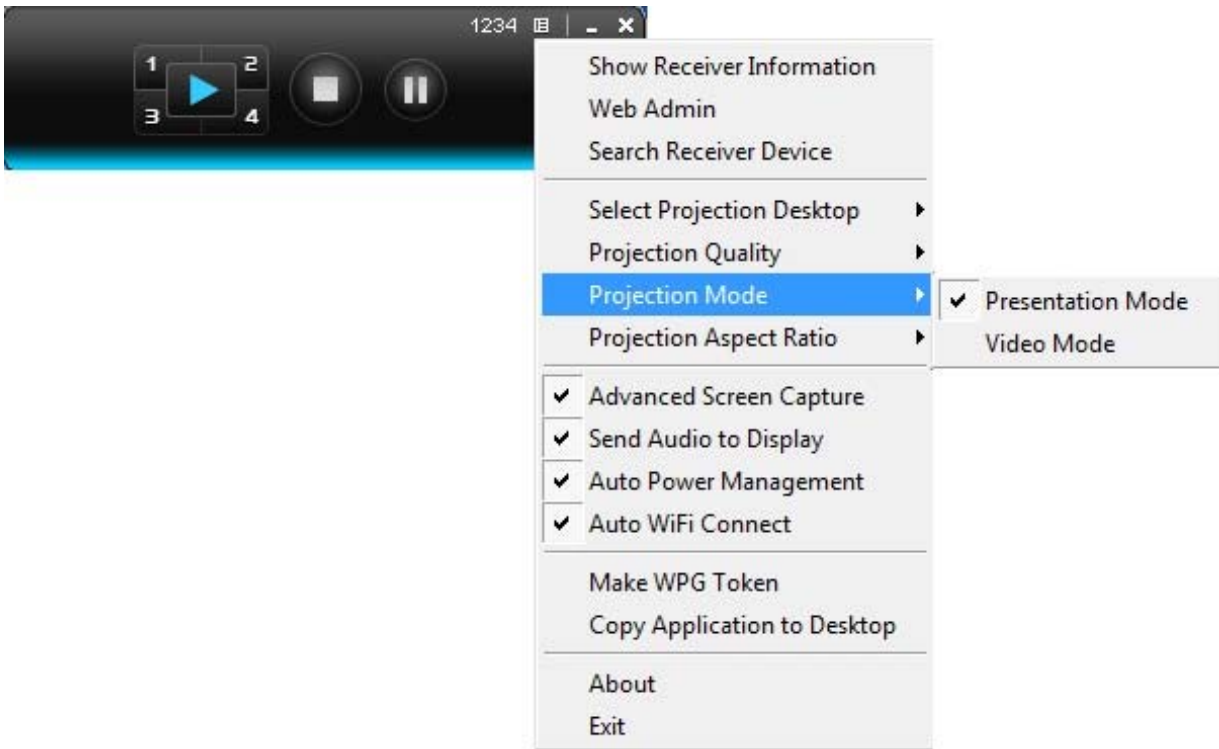


Figure 3-10 WPG Utility - Projection Mode

3.2.7. Projection Aspect Ratio

You can select full screen or just keep aspect ratio.

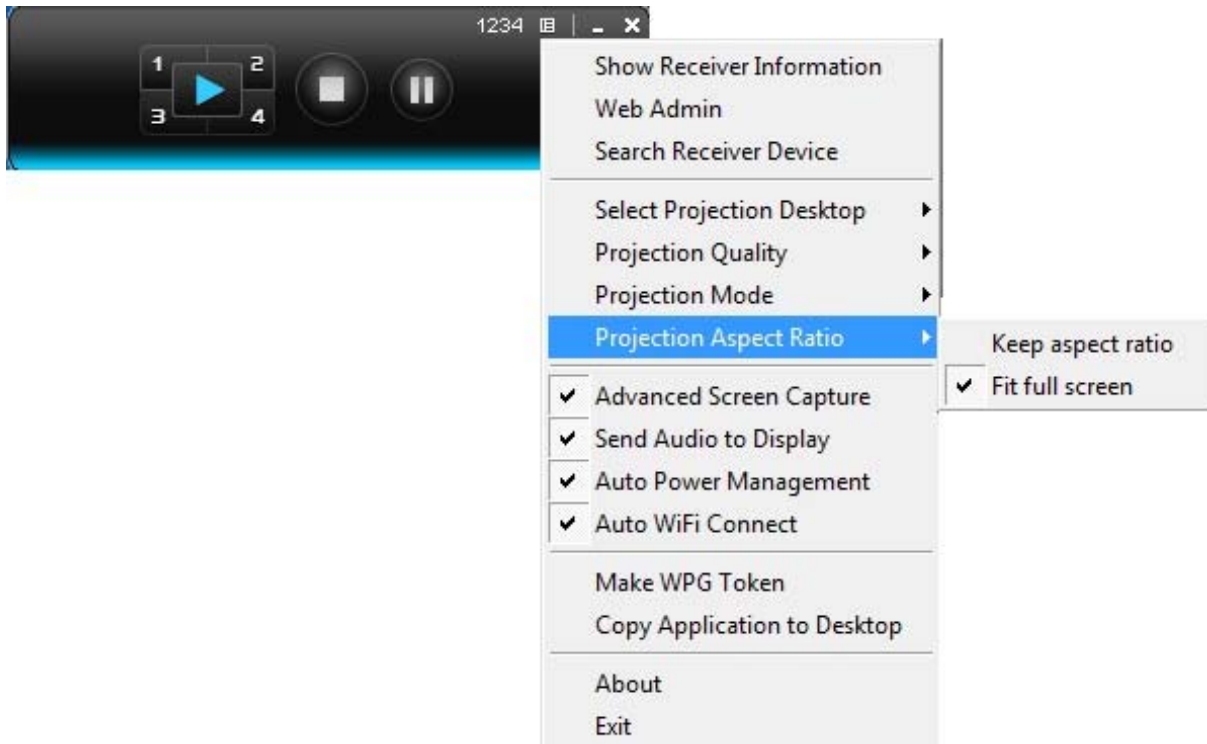


Figure 3-11 WPG Utility - Projection Aspect Ratio

3.2.8. Advanced Screen Capture

If you enable “**Advanced Screen Capture**”, all the tip windows and other layered windows (including the main UI) will be projected to the projector screen. However, the mouse cursor may blink from time to time when it is projecting.

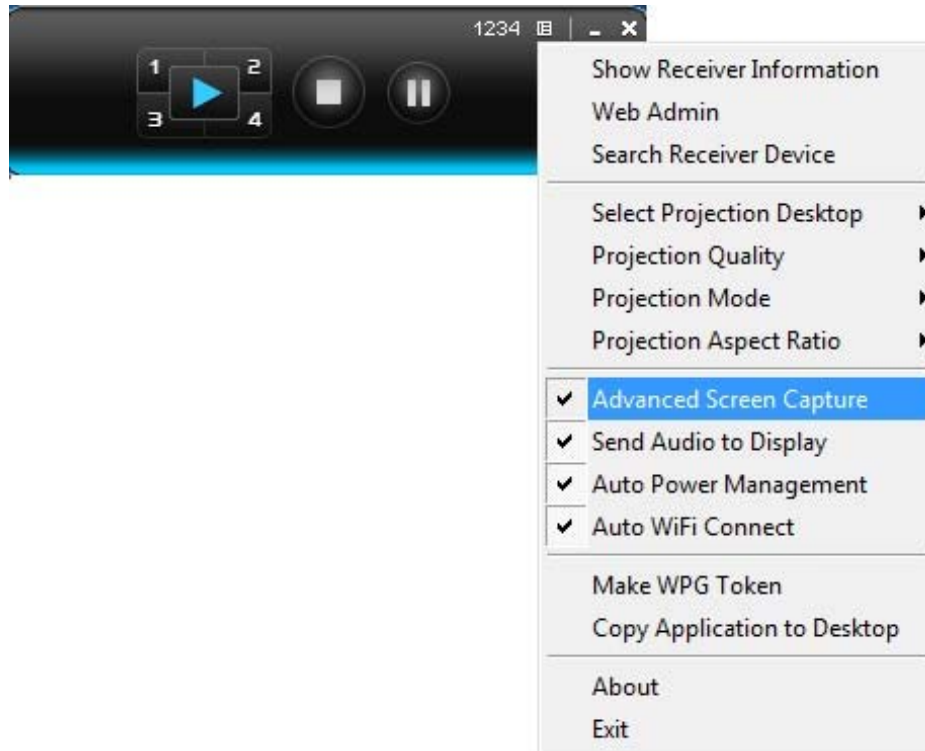


Figure 3-12 WPG Utility – Advanced Screen Capture



The Source Screen with Tip Window



The Projector Screen without Tip Window

3.2.9. Send Audio to Display

“Send Audio to Display” can project the audio wirelessly. Via the audio out jack, you can connect a speaker with WPG-210N and get more powerful volume than that of the laptop.

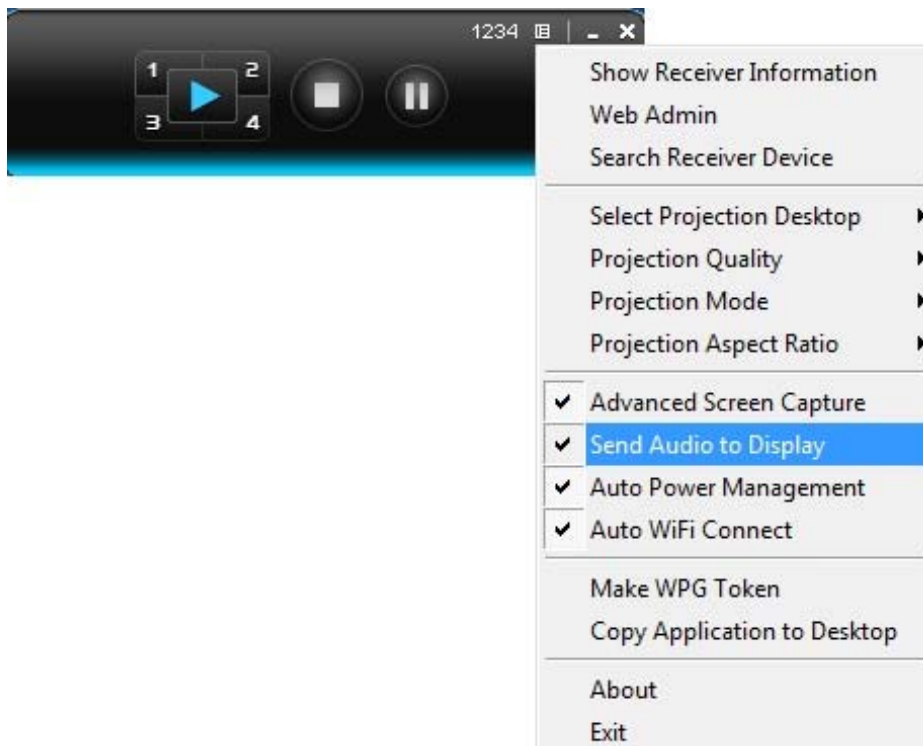


Figure 3-13 WPG Utility – Send Audio to Display

Before starting the Audio Projection, please install the “VAC.exe” (Virtual Audio Control) first on your computer. Please find the software in the CD-ROM and you can hear the audio from the device when projecting.



If the screen below appears during the installation of VAC, please click “Continue Anyway” button to continue.



Figure 3-14

3.2.10. Auto Power Management

If “Auto Power Management” is enabled, WPG will turn the Windows Power Scheme from current settings to “High Performance” for getting the highest projection performance. However, you can still click it again to disable this function, and restore your power scheme immediately.

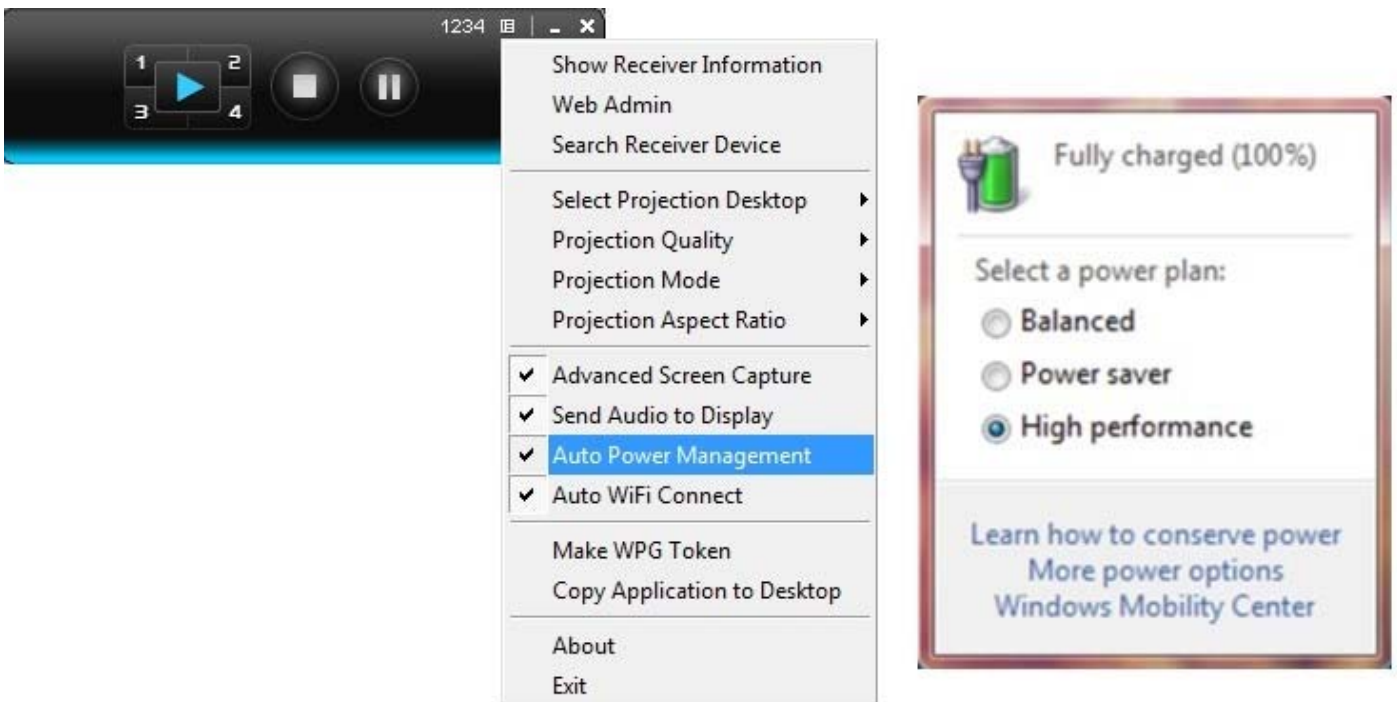


Figure 3-15 WPG Utility – Auto Power Management

3.2.11. Auto WiFi Connect

Click “**Auto WiFi Connect**” to enable the auto WiFi discovery and connection function for quick wireless connection established.

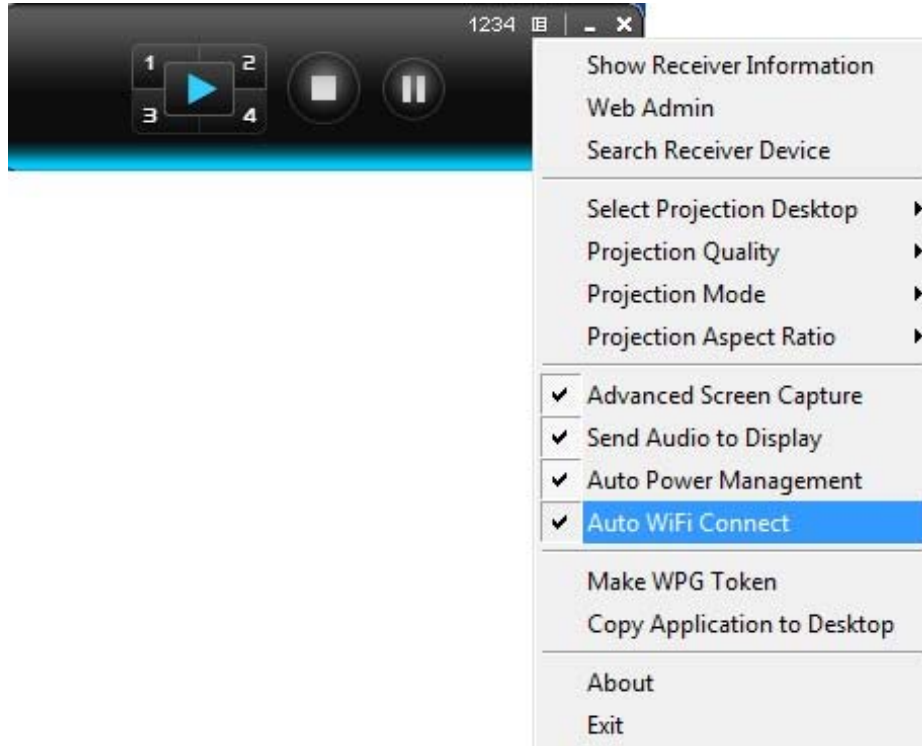


Figure 3-16 WPG Utility – Auto WiFi Connect

3.2.12. Make WPG Token

Click “**Make WPG Token**” to make a USB WPG Token, then you can insert the USB drive to any PC you want to make a presentation without installing any driver. Follow the instructions below to make the WPG Token.



Figure 3-17 WPG Utility – Make WPG Token



Figure 3-18 USB Auto Setup Wizard

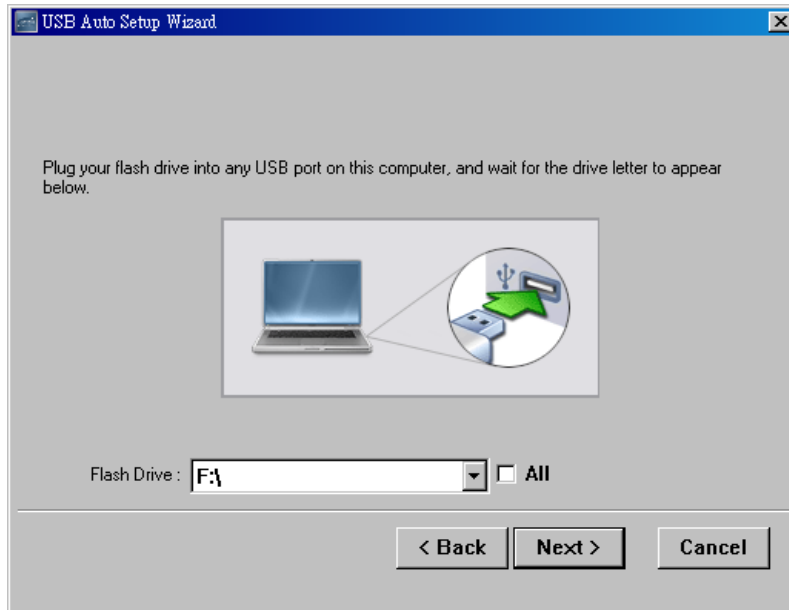


Figure 3-19 USB Auto Setup Wizard

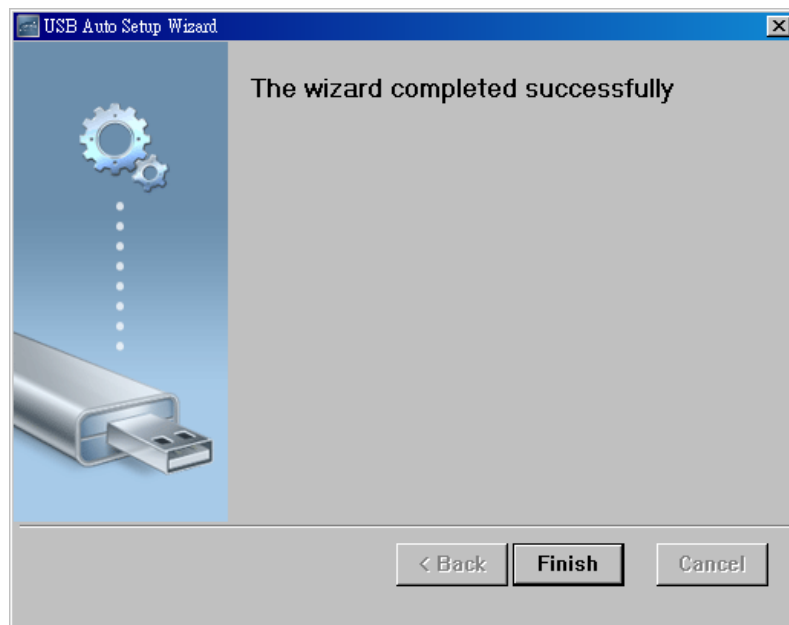


Figure 3-20 USB Auto Setup Wizard

3.2.13. Copy Application to Desktop

Click the “**Copy Application to desktop**” and then it will copy the application to your desktop immediately even you don’t have the system privilege.

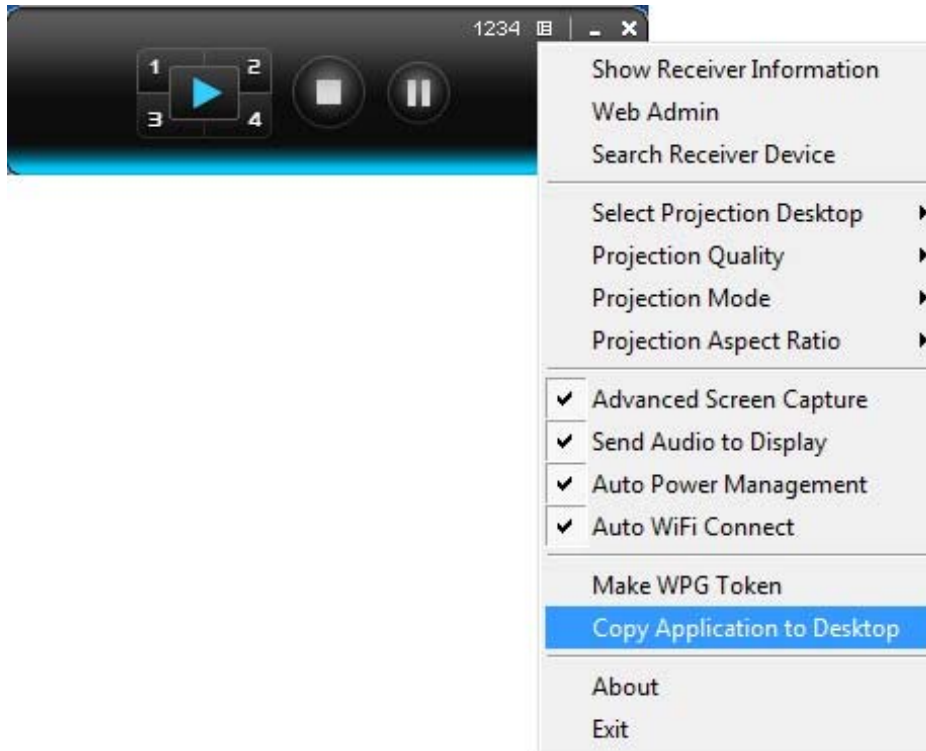


Figure 3-21 WPG Utility – Copy Application to Desktop

3.2.14. About

Click “**About**” to show the system information. It includes the client version, server IP address, and login code.

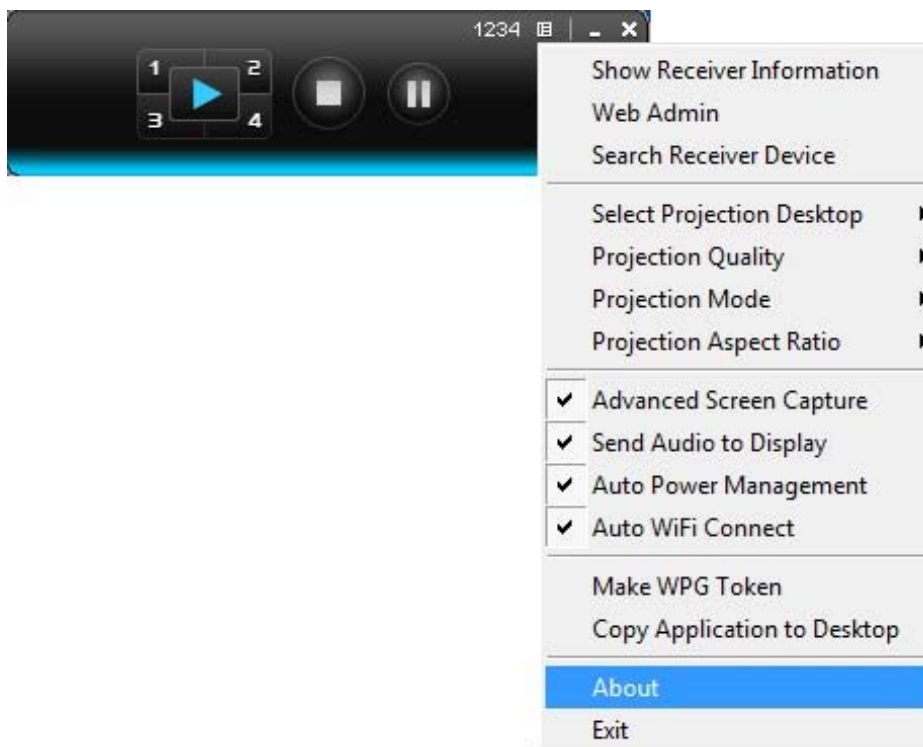




Figure 3-22 WPG Utility - About

3.2.15. Exit

Click “Exit” to exit the WPG utility. It will stop the current projection and close the application immediately.

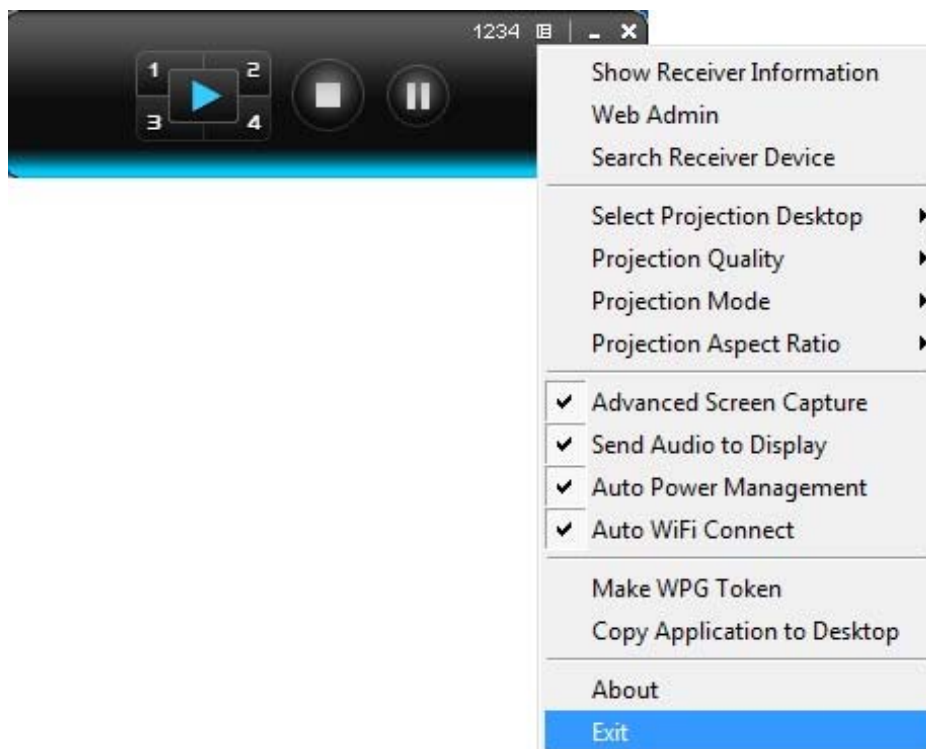


Figure 3-23 WPG Utility - Exit

Chapter 4. MAC OS X CLIENT UTILITY

4.1. Mac OS X Quick Connection

Step 1: Right-click on the **network icon** displayed in the system tray
The AirPort Network Connection menu will appear



Figure 4-1

Step 2: Highlight and select the wireless network (SSID) to connect

- (1) Select and SSID [**WPG-210N**]
- (2) Double-click on the selected SSID



Figure 4-2

Step 3: Enter the **encryption key** of the WPG-210N

- (1) Enter the encryption key that configured in [section 5.4.2](#)
- (1) Click the [**Join**] button



Figure 4-3



Note

If you want to connect this WPG-210N in the future, check **[Remember this network]**.

Step 4: Check if the AirPort is connected to the selected wireless network.

If "Yes", then there will be a "check" symbol in the front of the SSID.

Step 5: Open the web browser and it will redirect to WPG-210N home page automatically. Or you can enter the default IP address <http://192.168.1.1> to access it.

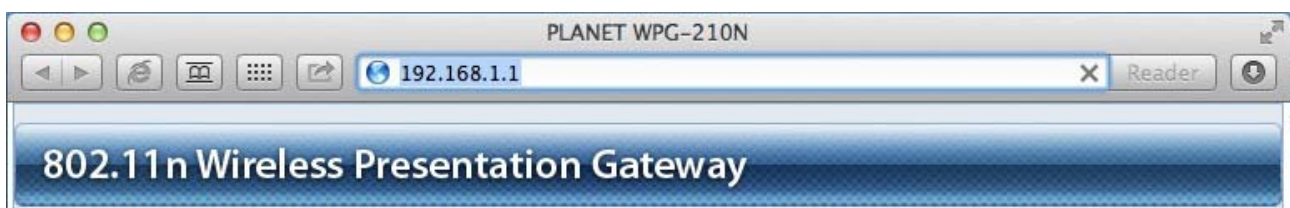


Figure 4-4

After a moment, the main screen appears as shown in [Figure 4-5](#)



Figure 4-5

4.2. Download Mac OS X Client Utility

Step 1. : Click "Download".

Step 2. : Choose the utility for "MAC" and then click **Download** button and execute the installation program.

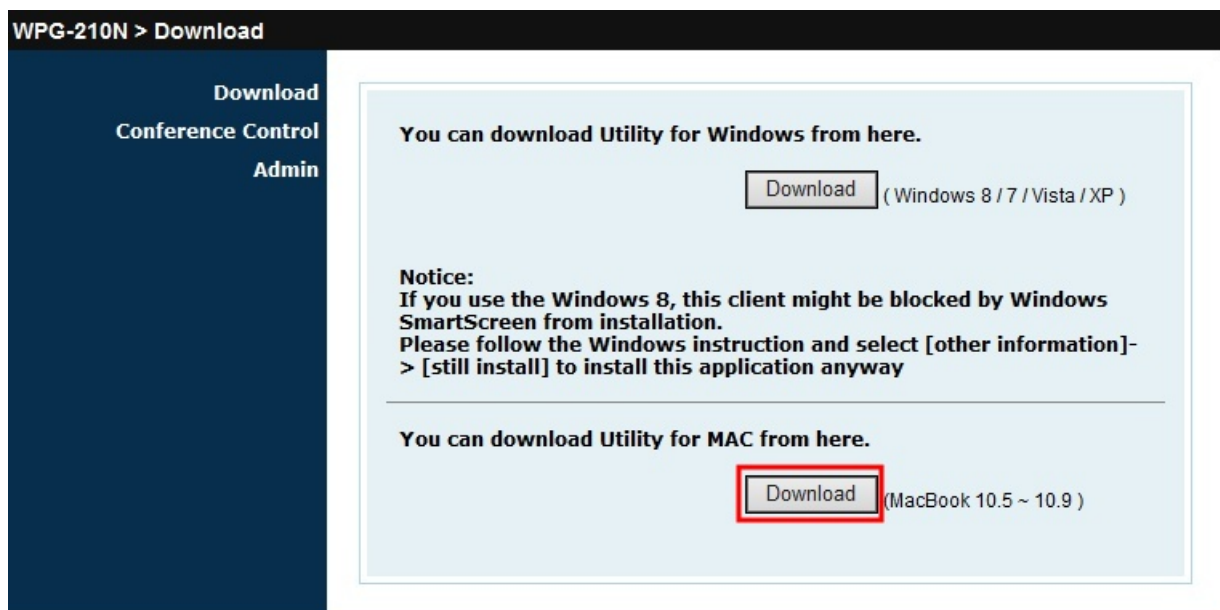


Figure 4-6

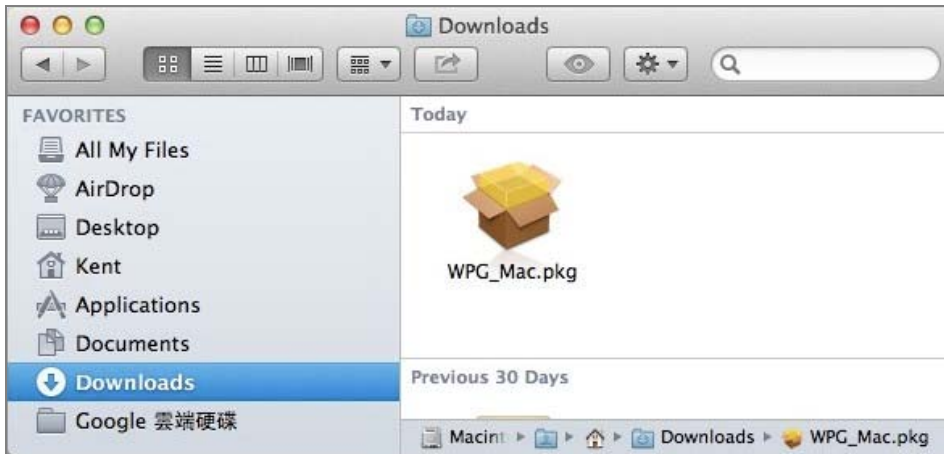


Figure 4-7

Step 3. : Follow Installation Wizard instructions to proceed till the installation process is completed.



Figure 4-8

Step 4. Click “WPG” icon to execute the program.



Step 5. WPG will start to search the available access points automatically if you have not connected your MAC to WPG-210N manually. When the WPG-210N is displayed in the list, please click it to connect and then enter the Login Code shown on the projector screen.

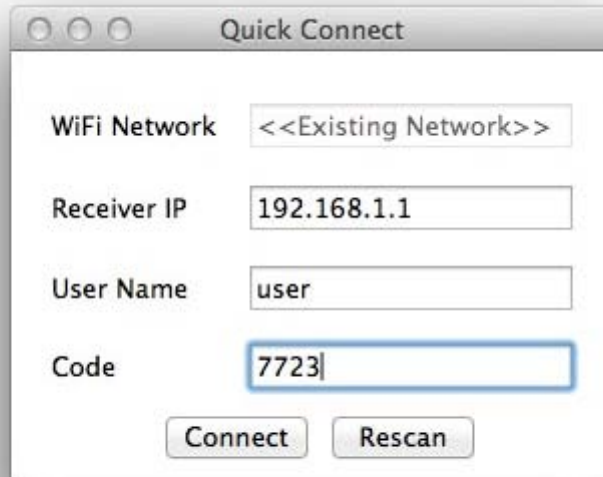


Figure 4-9

Step 6. Click “WPG” icon to execute the program.



Figure 4-10

4.3. Main User Interface

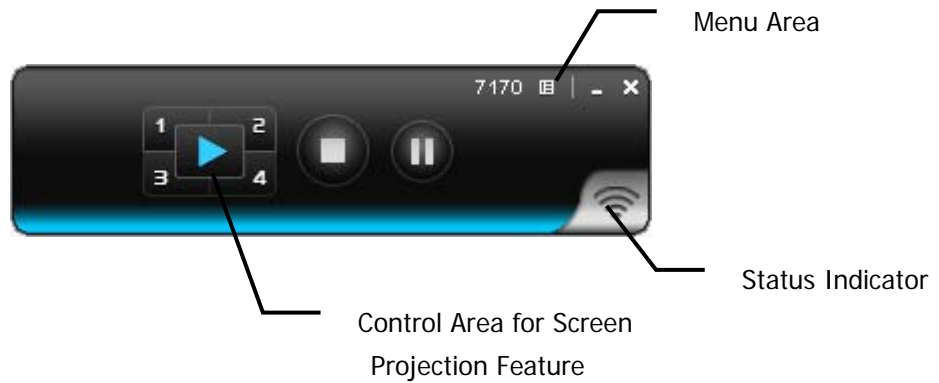









Figure 4-11

4.4. Screen Projection

Click the “Play” button for full or split screen and you can project the main screen on to the display immediately. Click the “Pause” button and you can freeze you projection screen, and click the “Stop” button to stop projecting your screen.



Figure 4-12

Button	Description
	Full Screen projection
	Project to Split #1
	Project to Split #2
	Project to Split #3
	Project to Split #4
	Stop projecting
	Pause projecting

4.5. MAC Audio Projection

First, before starting Audio Projection, please install the “**Soundflower.mpkg**” (MAC system extension for audio using) on your computer. Please find the software in bundled CD-ROM.

Second, click menu to open function list and enable Audio Projection and then you can hear the audio from device when projecting.

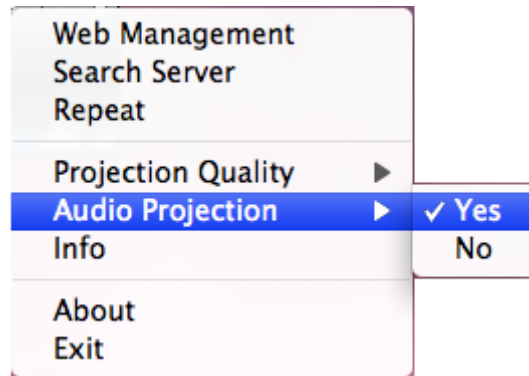


Figure 4-13

- 1) Execute the “**Soundflower.pkg**” in the Mac OS.
- 2) It will pop up a window “**Welcome to the Soundflower Installer**” and then please click “**Continue**”.



Figure 4-14

- 3) After reading the important information, please click “**Continue**” to go to the next step.



Figure 4-15

- 4) Select the language and click “**Continue**”.

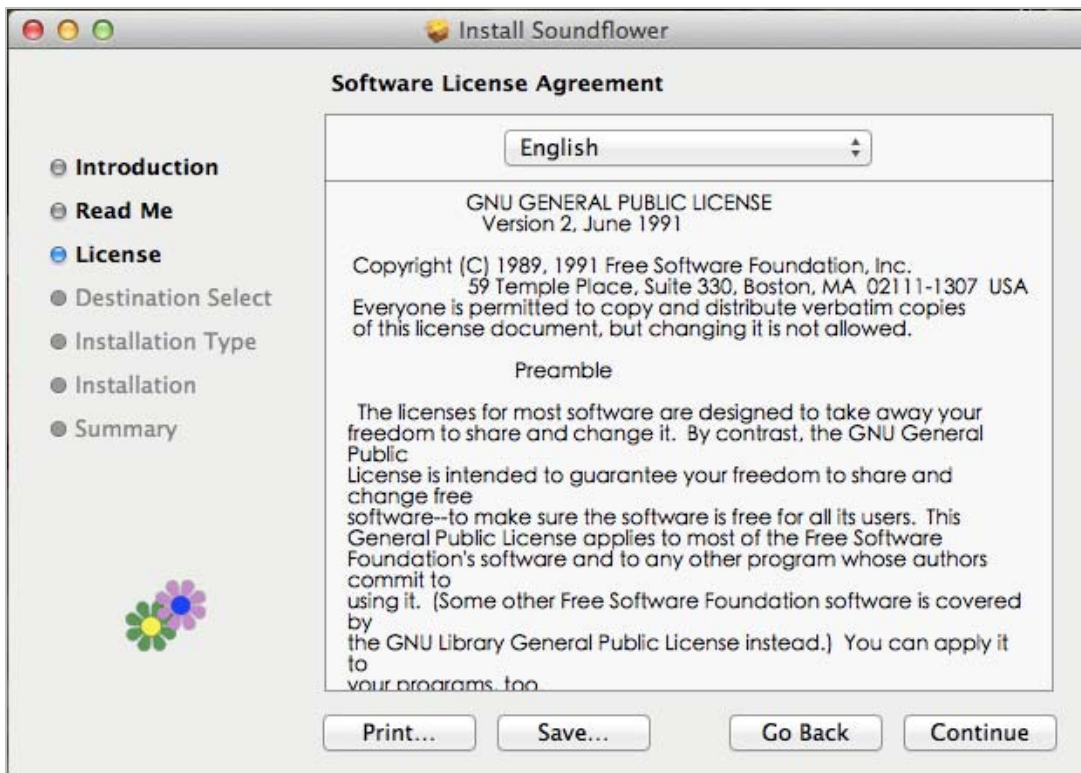


Figure 4-16

- 5) Click “**Agree**” and then click “**Continue**”.

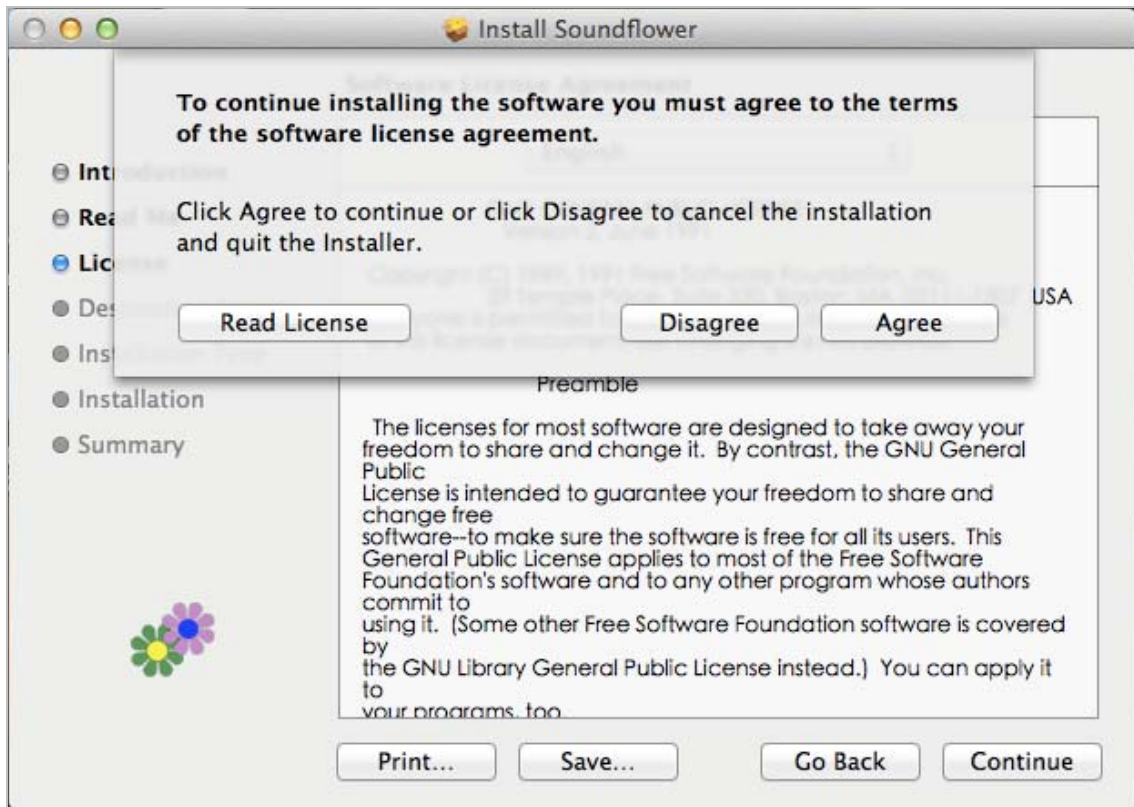


Figure 4-17

6) Click **"Install"**.

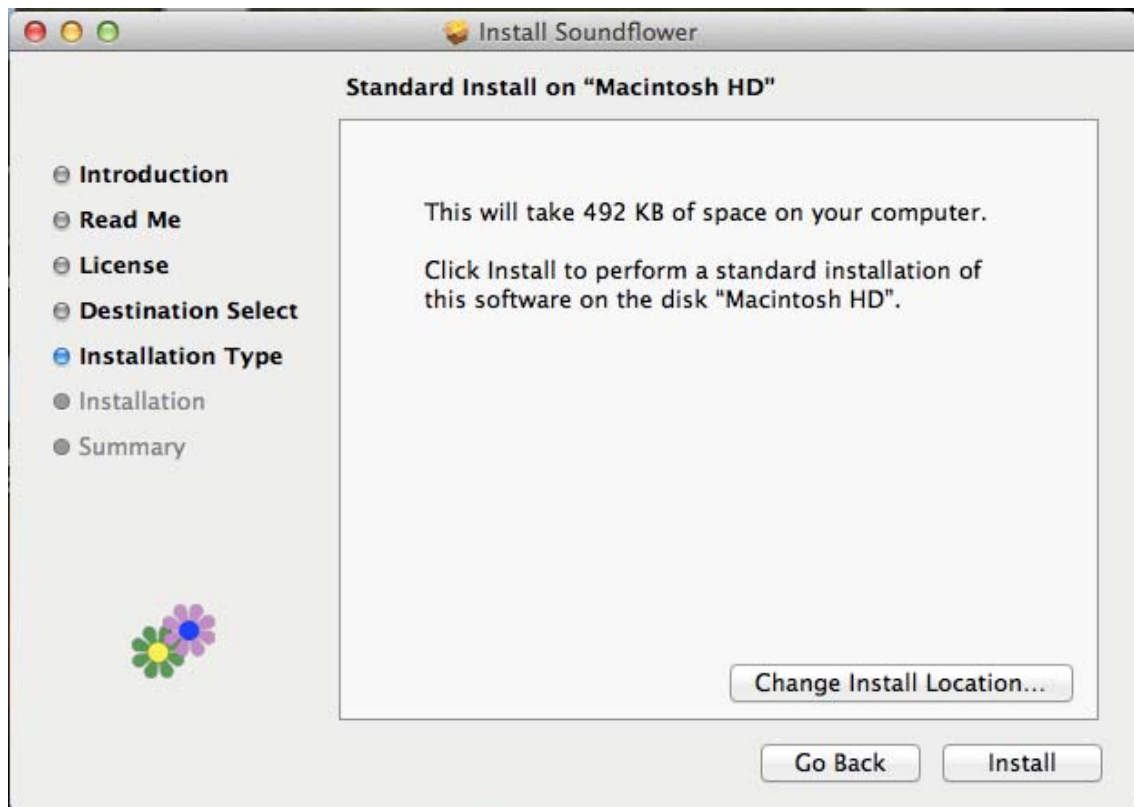
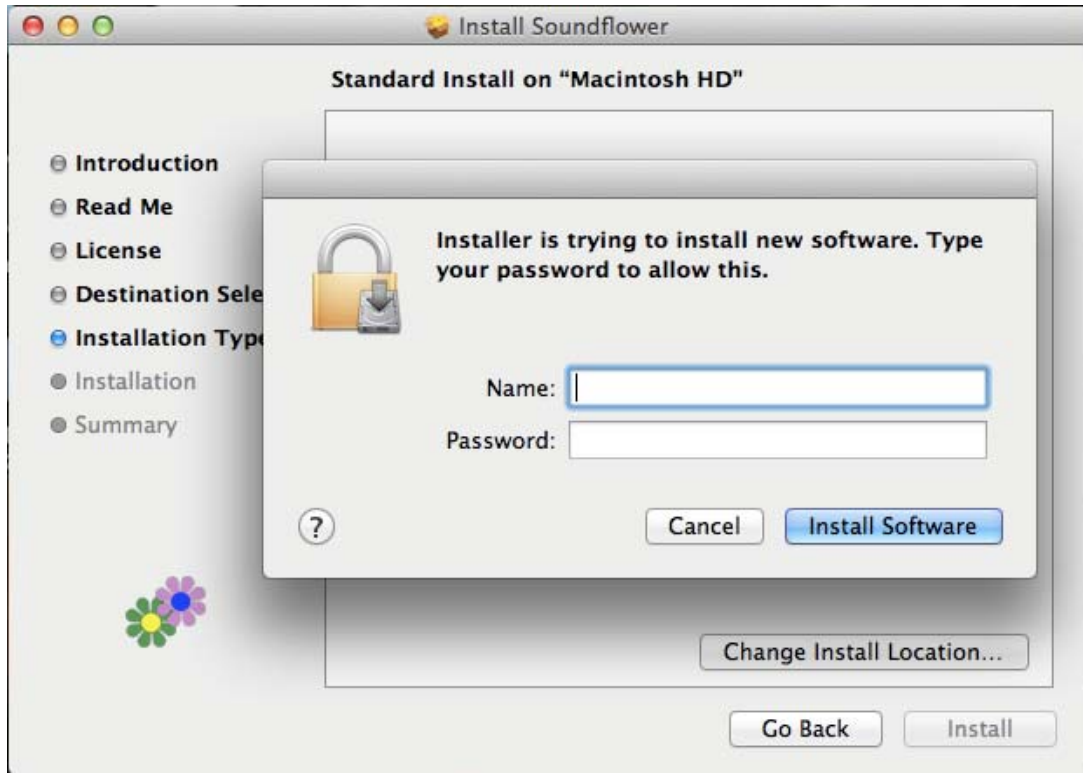
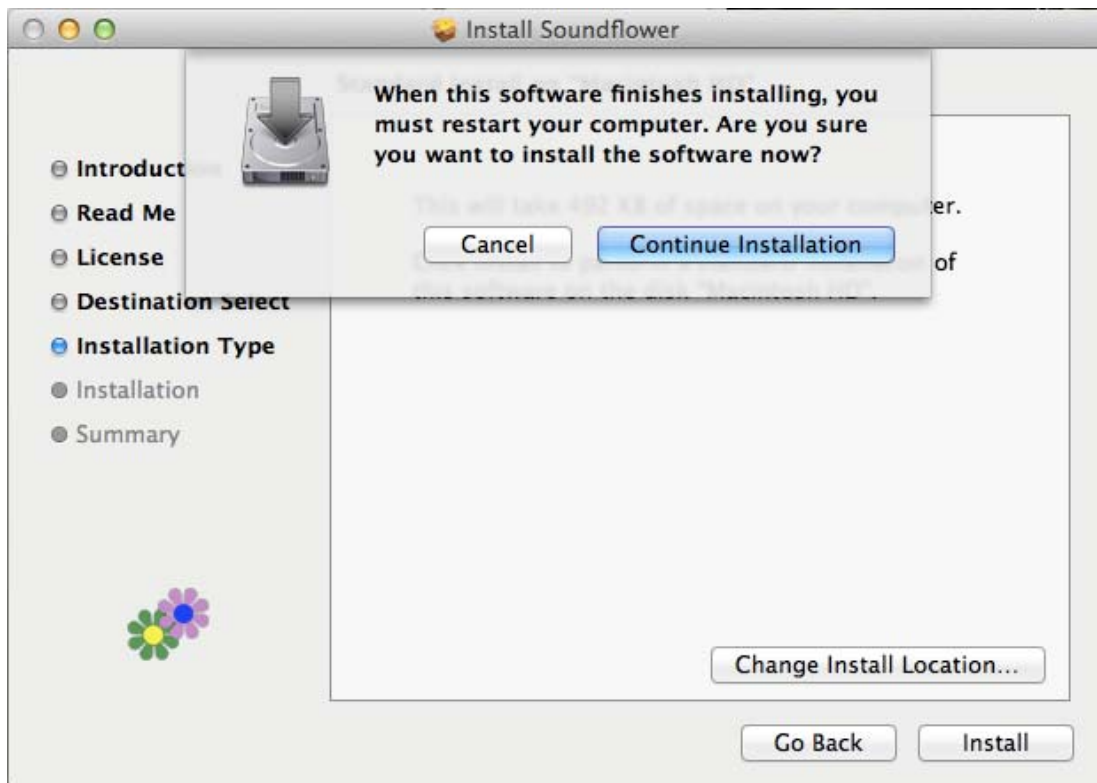


Figure 4-18

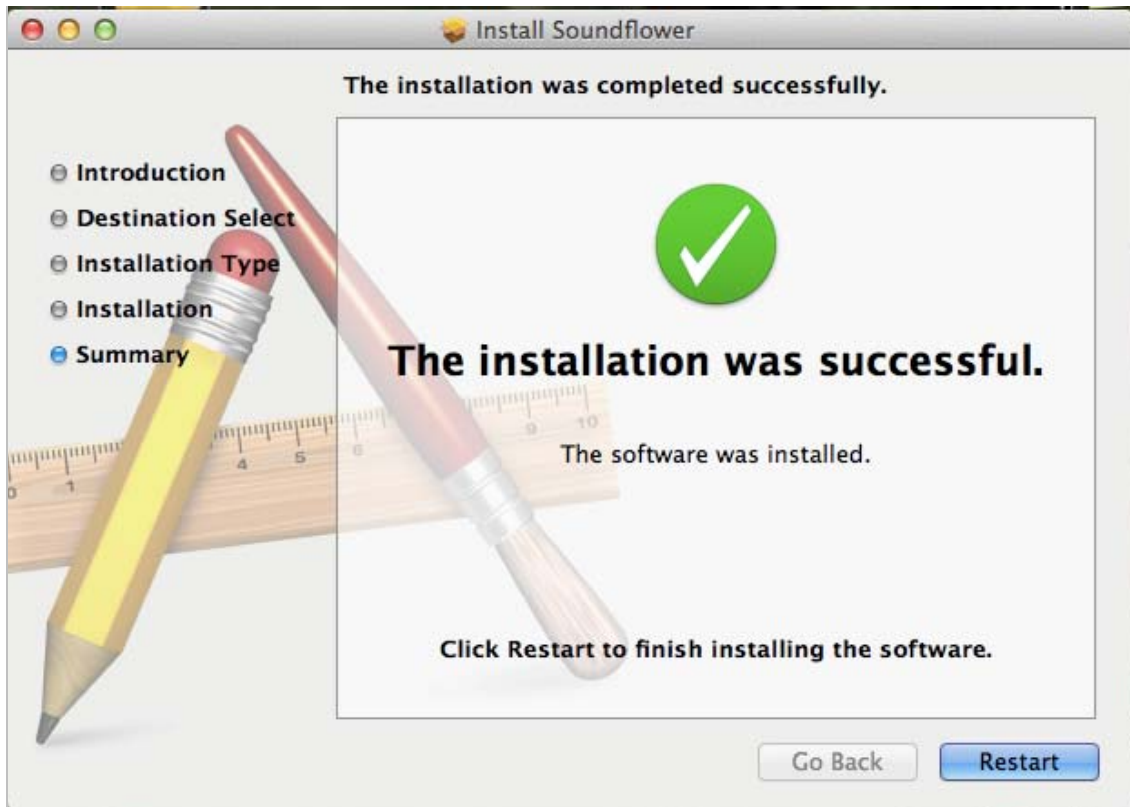
7) Enter your Username and Password of the System. Then, click **"Install Software"**.



- 8) A notice will pop up to remind you that computer will restart after finishing the installation. Please click **“Continue Installation”**.

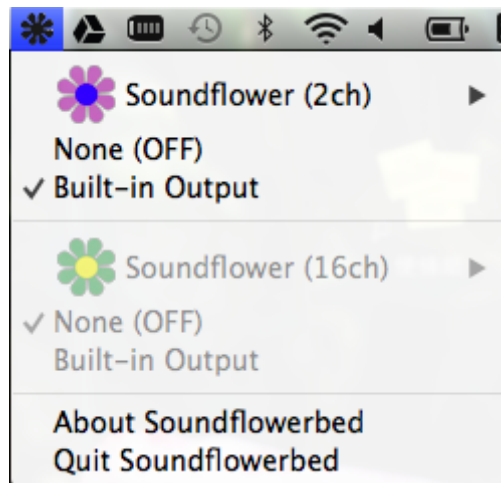


- 9) When the installation is successful, click **“Restart”** to restart your computer.



- 10) After restarting the computer, you will see there is a sunflower icon displayed in the system taskbar. Then, you can configure your audio output per your preference.

※ If the icon is not displayed, please execute the program of WPG-210N first.



Chapter 5. WEB UI MANAGEMENT

5.1. WPG-210N Homepage

Please follow the steps below to enter the web UI of WPG-210N.

Step 1. First, please connect your PC to WPG-210N (via wired or wireless).

Step 2. Open the web browser and it will redirect to WPG-210N home page automatically. Or you can enter the default IP address <http://192.168.1.1> to access it.



After a moment, the main screen appears as shown in [Figure 5-1](#).



Figure 5-1

The following sections will introduce the detailed instructions of the web UI functions.

5.2. Download

Please follow the steps below to download and execute the WPG installation program.

Step 1. Click “Download”.

Step 2. Choose the WPG utility for “**Windows 8 / 7 / Vista / XP**” or “**Mac OS X**” and then click Download button and execute the installation program.

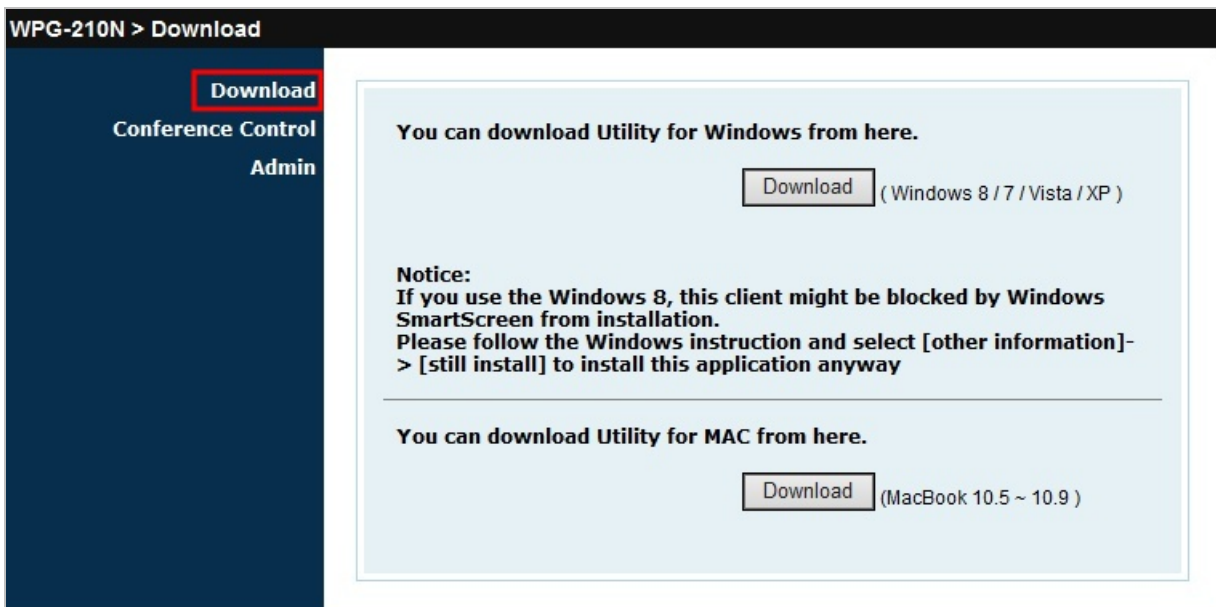



Figure 5-2

Step 3. Follow Installation Wizard instructions to proceed till the installation process is completed. Once installation is completed, a WPG utility shortcut  will appear on the desktop.



Note

If the “**Windows Security Alert**” pops up, just press “**Unblock**” button to continue the installation.

5.3. Conference Control

This function allows you to host a meeting without the projector cable swapping, and each participant is able to show their own presentation easily. Please follow the steps below to execute Conference Control.

Step 1. Click “Conference Control”.

Step 2. Enter the password. The default value is “trainer”. Then press Login button.



Figure 5-3

Step 3. After login, you can see a user list on the screen which indicates the clients who have already logged in into the WPG utility. There are three columns, “Name”, “Play Control” and “IP Address”.

There are six buttons:

Play (Full Screen)	Play Split #1	Play Split #2
Play Split #3	Play Split #4	Stop



Figure 5-4

5.4. Admin

This function allows you to login web management UI of WPG-210N. Click “**Admin**”, and enter the password. The default value is “**admin**”. Then click the **Login** button or press the **Enter** key.

Please refer to the following sections for further configuration of the web management UI.



802.11n Wireless Presentation Gateway

WPG-210N > Admin

Download
Conference Control
Admin

User Name admin

Password Login

(Default password: admin)

Copyright © 2013. All Rights Reserved

Figure 5-5

Default IP Address: **192.168.1.1**

Default Password: **admin**

After entering the password, the main screen appears as shown in [Figure 5-6](#).

5.4.1. System Status

On this page, you can see the current status and some basic settings of the presentation gateway.

802.11n Wireless Presentation Gateway

WPG-210N > Admin > System Status Logout »

System Status	Model Name	WPG-210N
Device Setup	Versions	
Network Setup	Firmware Version	1.0.2.5
OSD Setup	Network Status	
Change Passwords	IP Address	192.168.1.1
Reset to Default	Subnet Mask	255.255.255.0
Firmware Upgrade	Default Gateway	192.168.1.1
Reboot System	Wireless MAC Address	00:30:4F:08:C2:8E
	Wire MAC Address	00:30:4F:00:20:71
	Connection Status	
	Projecting Status	Projecting
	Total Users	1

Copyright © 2013. All Rights Reserved

Figure 5-6

Object	Description
Model Name	Product model name
Firmware Version	Product firmware version number
Network Status	
IP Address	The IP address of WPG-210N
Subnet Mask	The subnet mask
Default Gateway	The default gateway
Wireless MAC Address	The wireless MAC address
Wired MAC Address	The wired MAC address
Connection Status	
Projecting Status	It shows "Waiting for projecting" or "Projecting".
Total Users	The number of users who has already logged in into WPG utility

5.4.2. Network Setup

This page is used to configure the parameters for local area network which connects to the LAN port or wireless interface. Here you may change the setting for IP address, subnet mask, DHCP, etc.

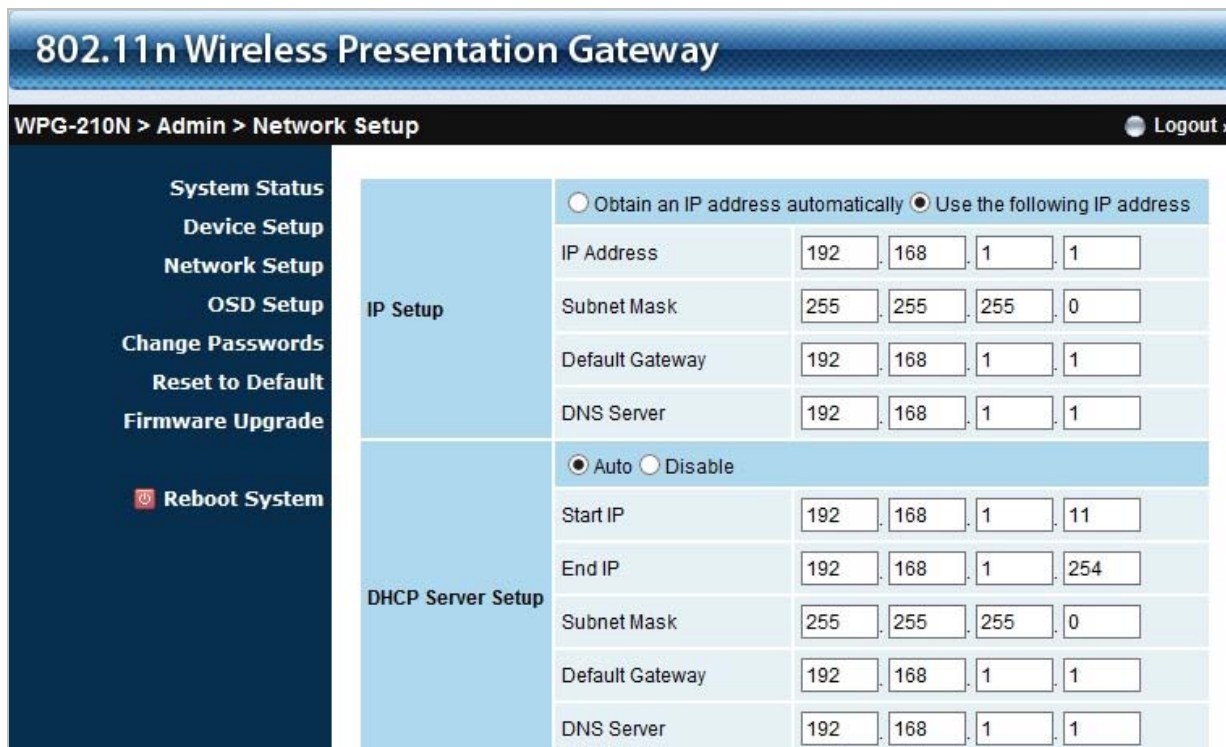


Figure 5-7-1

■ IP Setup

The page includes the following detailed fields:

Object	Description				
IP Setup					
Obtain IP address automatically	<p>If you select this option, the WPG-210N will detect the network environment automatically.</p> <ul style="list-style-type: none"> When WPG-210N is connected to a LAN that has DHCP server, the clients of WPG-210N will assign an IP by that server and the built-in DHCP server of WPG-210N will be disabled. When the WPG-210N is connected to a LAN that does not have any DHCP server, the built-in DHCP server of WPG-210N will be enabled and the clients of WPG-210N will obtain IP address by itself. 				
Use the following IP address	<p>Or you can select this option to use the fixed IP address for WPG-210N. (Default Settings)</p> <table border="1"> <tr> <td>IP Address</td> <td>The default value is 192.168.1.1</td> </tr> <tr> <td>Subnet Mask</td> <td>The default value is 255.255.255.0</td> </tr> </table>	IP Address	The default value is 192.168.1.1	Subnet Mask	The default value is 255.255.255.0
IP Address	The default value is 192.168.1.1				
Subnet Mask	The default value is 255.255.255.0				

	Default Gateway	The default value is 192.168.1.1
	DNS Server	The default value is 192.168.1.1

■ **DHCP Server Setup**

Object	Description	
Auto	Select “ Auto ” to enable the built-in DHCP server of WPG-210N. (Default Settings)	
	Start IP	The default value is 192.168.1.11
	End IP	The default value is 192.168.1.254
	Subnet Mask	The default value is 255.255.255.0
	Default Gateway	The default value is 192.168.1.1
	DNS Server	The default value is 192.168.1.1
Disable	Or you can select this option to disable the DHCP server of WPG-210N.	

■ **Wireless Setup**

Wireless Setup	Wireless LAN <input checked="" type="radio"/> Enable <input type="radio"/> Disable	Embedded AP SSID/ NAME WPG-210N
	Region	WORLDWIDE ▾
	SSID Broadcast	<input checked="" type="radio"/> Enable <input type="radio"/> Disable
	Channel	Auto ▾
	Encryption	WPA2 ▾
	Key	•••••••• <input checked="" type="checkbox"/> Hide characters
	Channel Bandwidth	<input type="radio"/> 20MHz <input checked="" type="radio"/> Auto

Figure 5-7-2

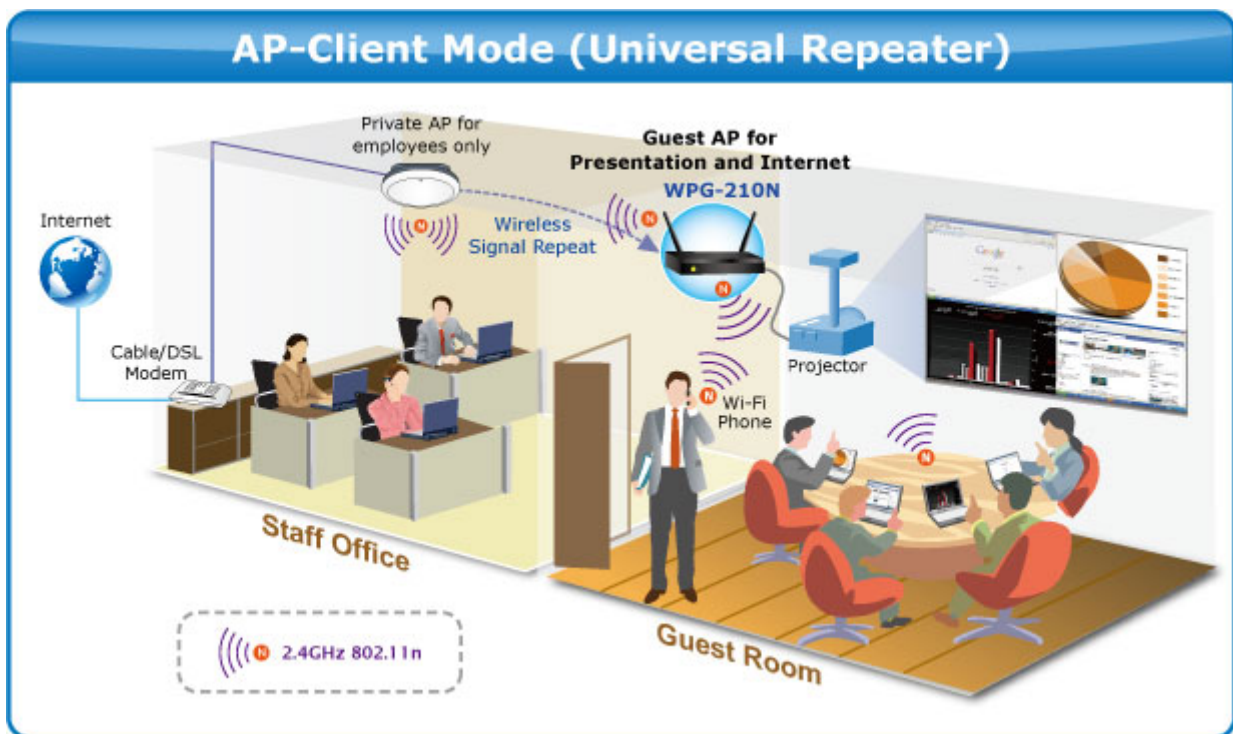
The page includes the following detailed fields:

Object	Description
Wireless LAN	The option for enabling or disabling wireless LAN function
	Embedded AP SSID You can configure the SSID string here when Wireless LAN is enabled.
Region	The default value is “Worldwide”.

SSID Broadcast	The default value is "Enable".
Channel	If you select "Auto", the WPG-210N will scan all of the wireless channels and choose a clear one automatically. Or you can select a fixed channel.
Encryption	The option of wireless security. You can select one of WEP / WPA / WPA2 , or disable it.
Key	If Encryption is enabled, you have to set the key according to the encryption mode you selected.

■ **AP Client Setup**

Check "Enable" radio button to switch WPG-210N to AP client mode. It can join other access points wirelessly. Besides, the clients can also login WPG-210N for presentation and surf the Internet via other AP simultaneously.



Ap Client	Connect to Existing AP <input type="radio"/> Enable <input checked="" type="radio"/> Disable	Existing AP SSID <input type="text"/> <input type="button" value="Scan"/>
	Encryption	Disable <input type="button" value="v"/>
	Key	<input type="text"/> <input checked="" type="checkbox"/> Hide characters
GateKeeper	<input checked="" type="radio"/> All Pass <input type="radio"/> All Block <input type="radio"/> Internet Only	
SNMP	<input checked="" type="radio"/> Enable <input type="radio"/> Disable	

The page includes the following detailed fields:

Object	Description	
Connect to Existing AP	The option for enabling or disabling AP client mode. By this feature you can join other Access Points wirelessly. And LAN function will be disabled during AP client mode.	
	Existing AP SSID	Enter the existing AP's SSID here when AP client mode is enabled.
Encryption	Choose the wireless security type of the AP you want to join.	
Key	Enter the key of the AP you want to join.	
GateKeeper	Gatekeeper is designed for ensuring the enterprise network security within WPG-210N.	
	All Pass	Allow the clients of WPG-210N (guests) to access the whole office network. (Default setting)
	All Block	Block the clients of WPG-210N (guests) to access the whole office network (LAN).
	Internet only	This option will block the clients of WPG-210N (guests) from the office network (LAN) but still reserve the Internet connection capability.
SNMP	You can choose enable or disable SNMP function from here. And download the MIB file from the PLANET website.	

Click the Apply button to make the changes to take effect.



To enable the WPG-210N to run as an AP Client to connect to other existing APs wirelessly, please set the encryption security type to **“WPA AES”** or **“WPA2 AES”**.



LAN function will be disabled during AP client mode.

5.4.3. OSD Setup

Users can customize their own OSD (on-screen display) standby image.

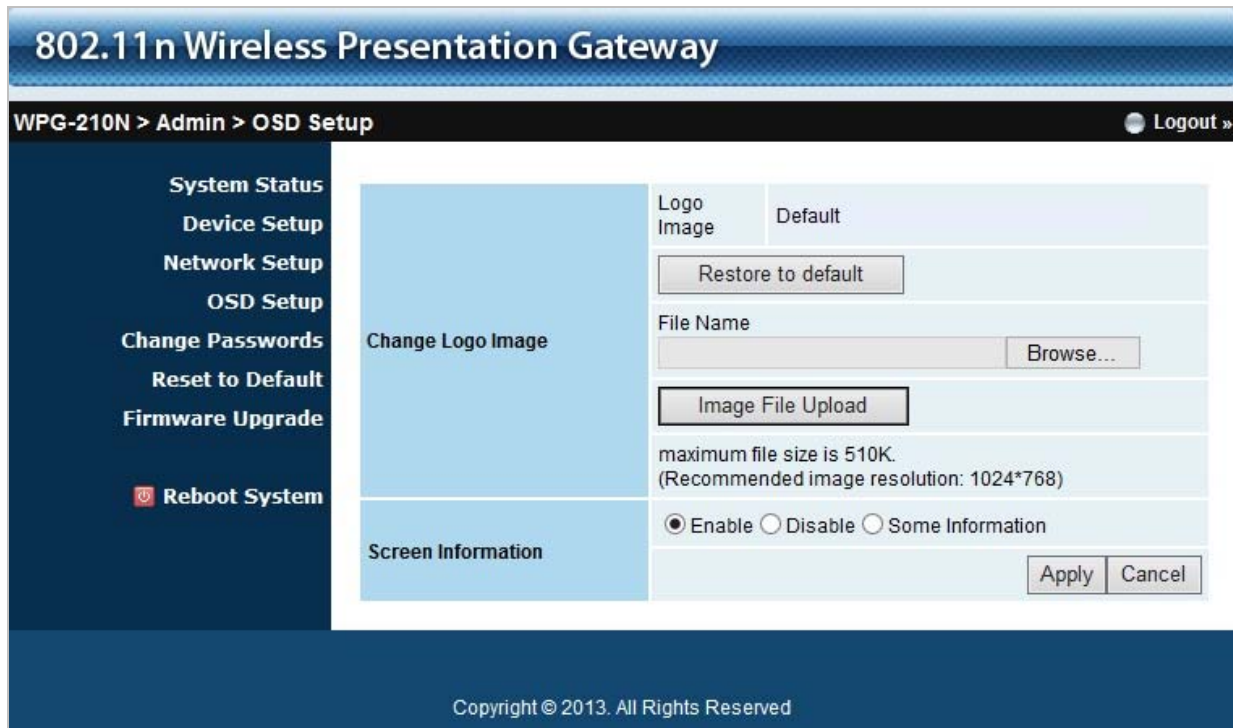


Figure 5-8

The web page includes the following fields:

Object	Description
Restore Initial	Restore to the default OSD standby image.
Image File Upload	Upload the customized OSD standby image. (You need to use the provided IB Maker utility stored in the CD-ROM to convert the image to the system defined format.)

5.4.4. Device Setup

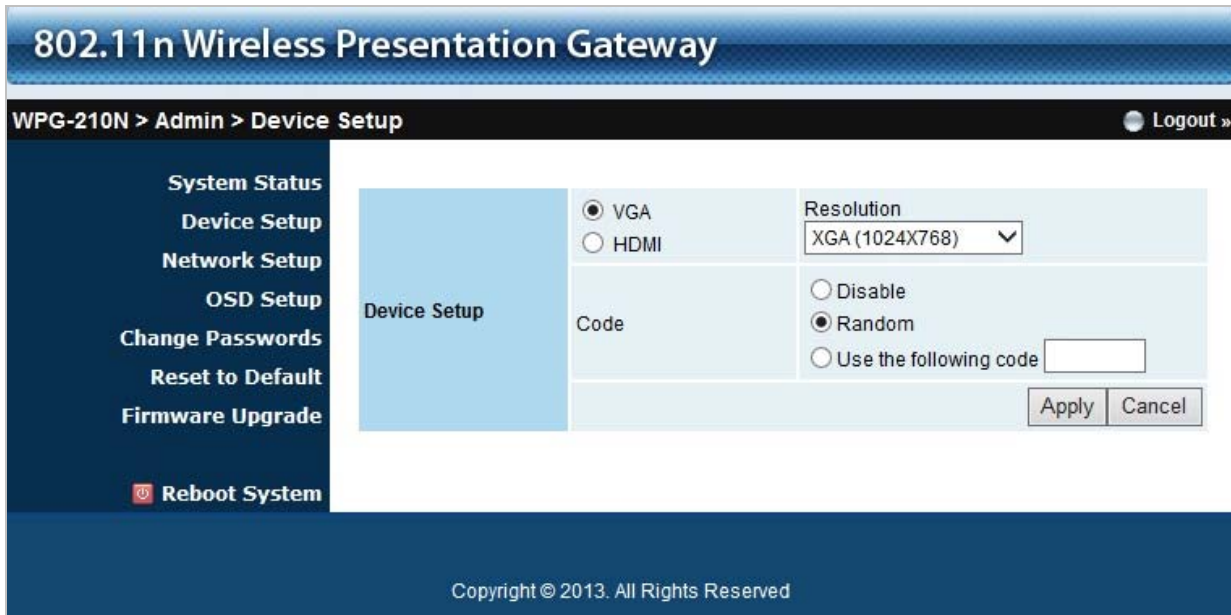


Figure 5-9

Object	Description
Resolution	<p>VGA: SVGA (800x600) / XGA (1024x768) WXGA(1280x768) / WXGA(1280x800) WXGA (1360x768) / WXGA+ (1440x900)</p> <p>HDMI: 720p (1280x720)</p>
Login Code	You can select “Disable”, “Random”, or “Use the following code” to set a specified 4-characters Number.



The default setting of project output port is VGA. However, The HDMI cable will still work if you plug it before powering on the WPG-210N.

Click the Apply button to make the changes to take effect.

5.4.5. Change Passwords

Users can change the login password. The length of password is up to 8 characters.

802.11n Wireless Presentation Gateway

WPG-210N > Admin > Change Passwords Logout »

System Status
Device Setup
Network Setup
OSD Setup
Change Passwords
Reset to Default
Firmware Upgrade
Reboot System

Conference Control

Enter New Password	<input type="text"/>	Apply
Confirm New Password	<input type="text"/>	

Admin

Enter New Password	<input type="text"/>	Apply
Confirm New Password	<input type="text"/>	

Copyright © 2013. All Rights Reserved

Figure 5-10

Click the Apply button to make the changes to take effect.


5.4.6. Reset to Default

This page allows you to reset the current configuration to factory default.

802.11n Wireless Presentation Gateway

WPG-210N > Admin > Reset to Default Logout »

System Status
Device Setup
Network Setup
OSD Setup
Change Passwords
Reset to Default
Firmware Upgrade
Reboot System

 **Reset to Default**
This will restore the device to the factory default settings.

Apply

Copyright © 2013. All Rights Reserved

Figure 5-11

Click the Apply button to restore the WPG-210N to the factory default settings.

5.4.7. Firmware Upgrade

This page allows you to upgrade the WPG-210N firmware to new version. Please note: Do not power off the device during the upload because it may crash the system.

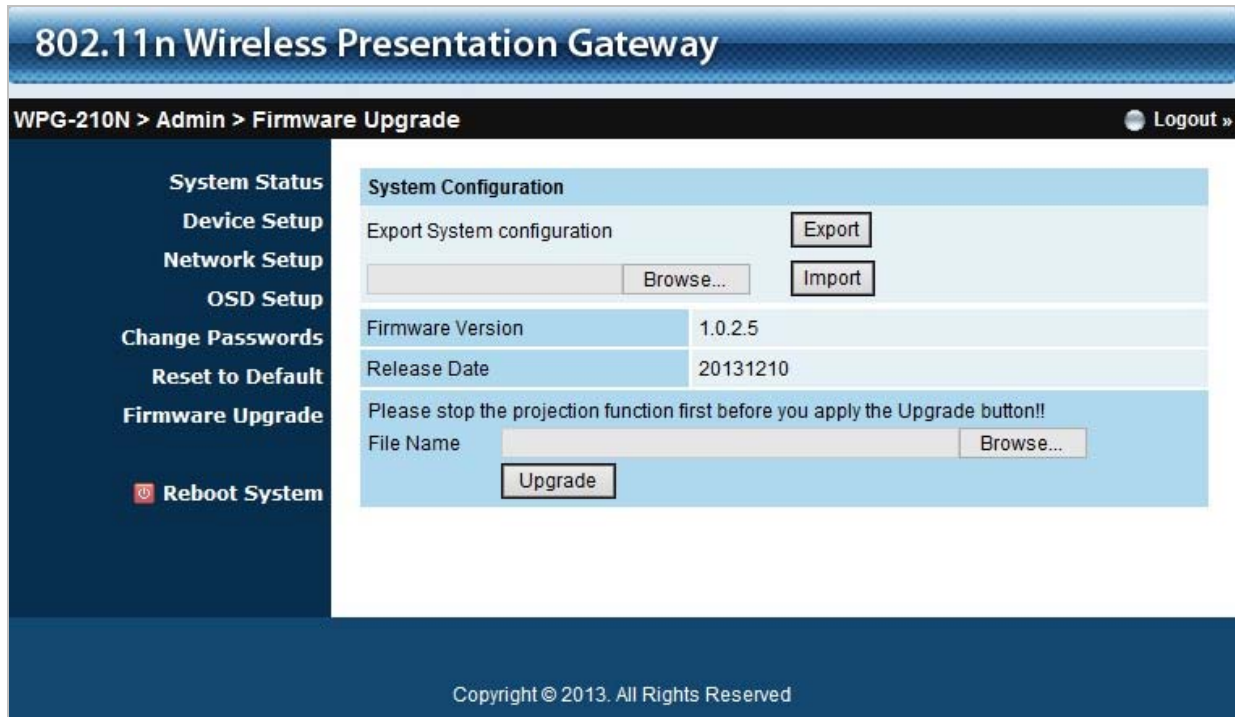


Figure 5-12

If it is necessary to upgrade the firmware, please follow the steps below to operate carefully.

Step 1. First, download the latest firmware image file from PLANET website.

Step 2. Click Browse button to specify the file you want to upgrade.

Step 3. Click Upgrade button to start.

Step 4. There will be a warning message shown and countdown counter on the screen.



Step 5. After a few minutes, a complete message will show on the screen.



Step 6. Power off the WPG-210N and then power on it again.

Step 7. Login the web UI, and click Reset to Default to take effect.



New firmware versions posted at the website of PLANET Technology can be downloaded for free. There is no need to upgrade the firmware unless the new firmware has a new feature you want to use.



When you upgrade its firmware, you may lose its current configurations. Do not turn off the WPG-210N while the firmware is being upgraded; otherwise, the WPG-210N may be damaged.

5.4.8. Reboot System

Press Reboot to reboot system. Please wait for a few minutes and reload web page again.



Figure 5-13

Click Reboot button to restart the WPG-210N.

Appendix A: Configuring the PCs

In this section, we'll introduce how to install and configure the TCP/IP correctly in Windows XP. First make sure your Ethernet Adapter is working, refer to the adapter's manual if needed.

1. Install TCP/IP component

- 1) On the Windows taskbar, click the **Start** button, point to **Settings**, and then click **Control Panel**.
- 2) Click the **Network and Internet Connections** icon, and then click on the **Network Connections** tab in the appearing window.
- 3) Right-click the icon shown below and select Properties on the prompt page.

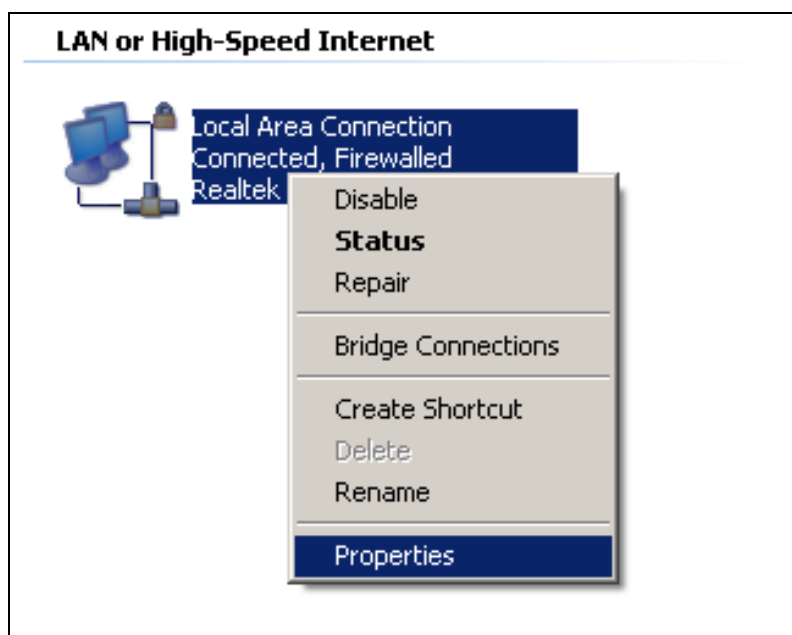


Figure A-1

- 4) On the prompt page shown below, double-click on the **Internet Protocol (TCP/IP)**.

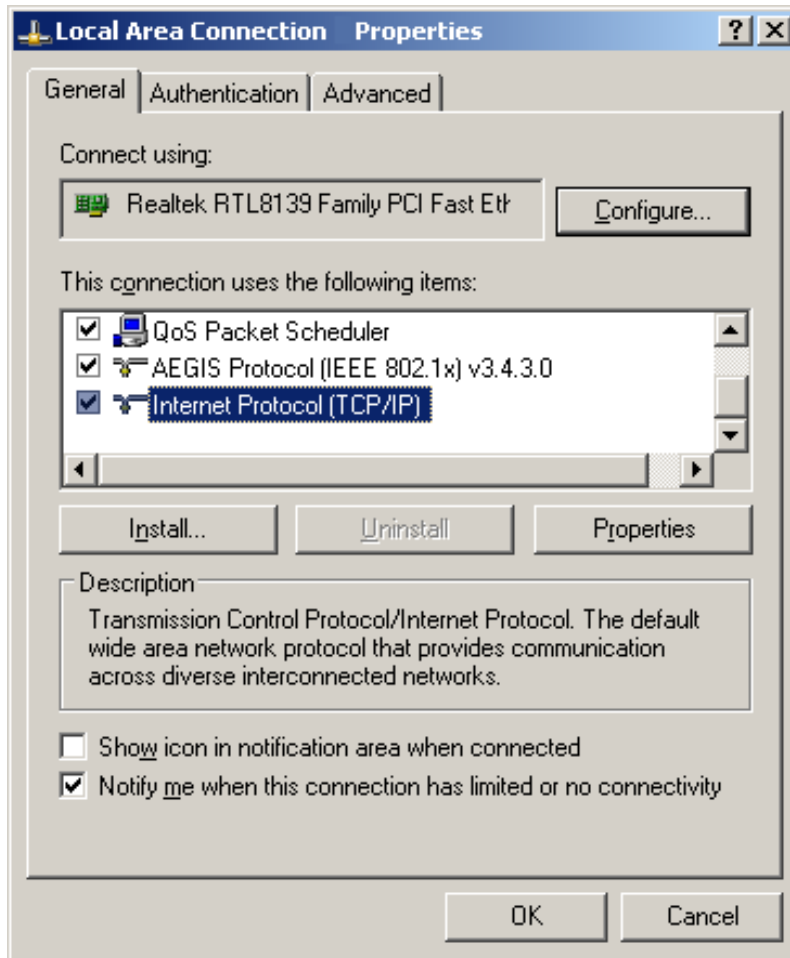


Figure A-2

- 5) The following **TCP/IP Properties** window will display and the **IP Address** tab is open on this window by default.

Now you have two ways to configure the **TCP/IP** protocol below:

➤ **Setting IP address automatically**

Select **Obtain an IP address automatically**, Choose **Obtain DNS server automatically**, as shown in the Figure below:

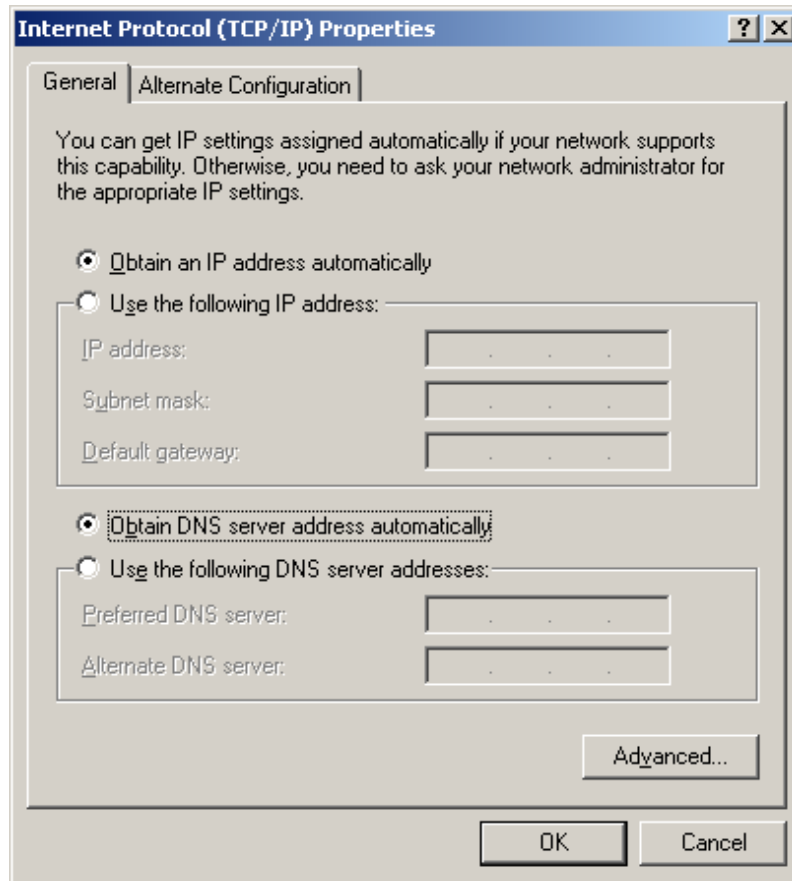


Figure A-3

➤ **Setting IP address manually**

- 1 Select **Use the following IP address** radio button.
- 2 If the device's LAN IP address is 192.168.1.1, type in IP address 192.168.1.x (x is from 2 to 254), and **Subnet mask** 255.255.255.0.
- 3 Type the device's LAN IP address (the default IP is 192.168.1.1) into the **Default gateway** field.
- 4 Select **Use the following DNS server addresses** radio button. In the **Preferred DNS Server** field you can type the DNS server IP address which has been provided by your ISP

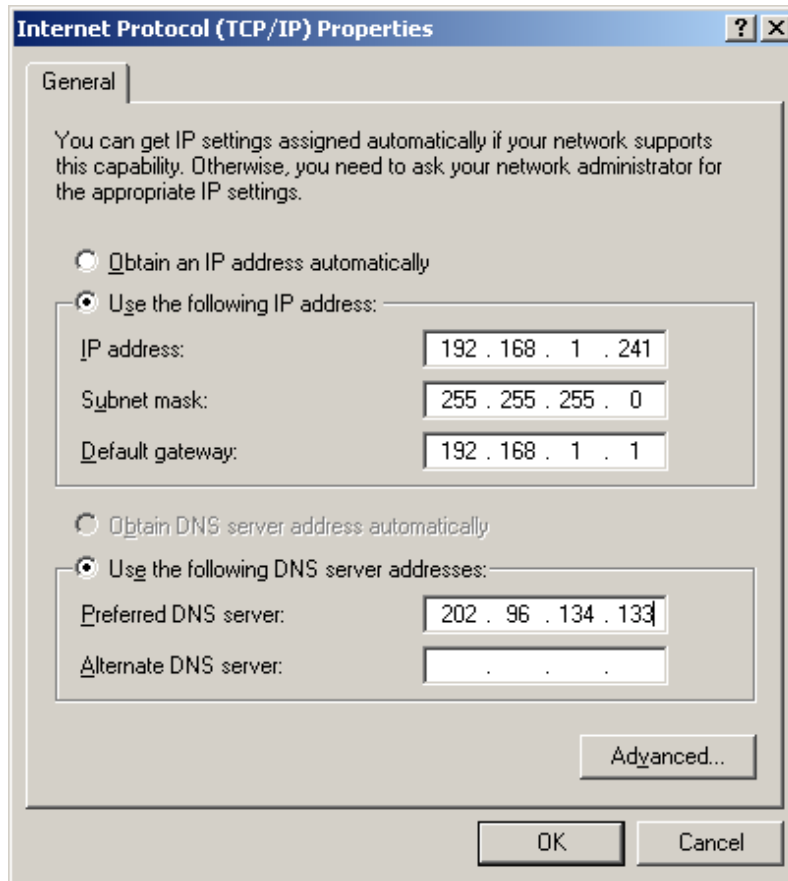


Figure A-4

Now click **OK** to keep your settings.

Appendix B: FAQ

[FAQ1 : How to reset the WPG-210N to factory default](#)

[ANSWERS]

1) Power off the WPG-210N.

2) Press and hold the button with paper clip, and then plug in the DC jack of the AC adapter to power on WPG-210N. After 10~15 seconds, you can release the button.



3) Now, you should be able to login the WPG-210N by default setting. (Default username and password are both "admin".)

[FAQ 2: How to use WPG-210N to output the screen to the projector or LCD via HDMI cable](#)

[ANSWERS]

You can switch the output interface through the web UI. The default setting is VGA.

However, if you want to use HDMI interface directly without switching:

- (1) Plug the HDMI connector and turn on the projector or LCD first.
- (2) Then just power on the WPG-210N to achieve it.

[FAQ 3: With the Windows XP client, how to output the audio via the audio jack of the WPG-210N when the video is projected](#)

[ANSWERS]

(1) First of all, please install "VAC.exe" (Virtual Audio Control) first on your computer. The software can be

found in \Utility\ of the CD-ROM.

- (2) After the driver is installed, please launch WPG utility.
- (3) Click Menu icon and select “**Send Audio to Display**” to Yes.
- (4) After restarting WPG utility, you can have the audio via the audio jack of the WPG-210N.

EC Declaration of Conformity

For the following equipment:

*Type of Product: 802.11n Wireless Presentation Gateway

*Model Number: WPG-210N

* Produced by:

Manufacturer's Name : **Planet Technology Corp.**

Manufacturer's Address: 10F., No.96, Minquan Rd., Xindian Dist.,
New Taipei City 231, Taiwan (R.O.C.)

is herewith confirmed to comply with the requirements set out in the Council Directive on the Approximation of the Laws of the Member States relating to 1999/5/EC R&TTE.

For the evaluation regarding the R&TTE the following standards were applied:

EN 300 328 V1.7.1	(2006-10)
EN 301 489-17 V2.1.1	(2009-05)
EN 301 489-1 V1.9.2	(2011-09)
EN 55022	(2010 Class B)
EN 55024	(2010)
EN 61000-3-2	(2006 / A1:2009 / A2:2009)
EN 61000-3-3	(2008)
IEC 61000-4-2	(2008)
IEC 61000-4-3	(2006 / A1:2007 / A2:2010)
IEC 61000-4-4	(2004 / A1:2010)
IEC 61000-4-5	(2005)
IEC 61000-4-6	(2008)
IEC 61000-4-8	(2009)
IEC 61000-4-11	(2004)
EN 62311	(2008)
EN 60950-1	(2006 + A11:2009 + A1:2010 + A12:2011)

Responsible for marking this declaration if the:

Manufacturer Authorized representative established within the EU

Authorized representative established within the EU (if applicable):

Company Name: Planet Technology Corp.

Company Address: 10F., No.96, Minquan Rd., Xindian Dist., New Taipei City 231, Taiwan (R.O.C.)

Person responsible for making this declaration

Name, Surname Kent Kang

Position / Title : Product Manager

Taiwan
Place

25 Feb., 2013
Date


Legal Signature

PLANET TECHNOLOGY CORPORATION

e-mail: sales@planet.com.tw http://www.planet.com.tw

10F., No.96, Minquan Rd., Xindian Dist., New Taipei City, Taiwan, R.O.C. Tel:886-2-2219-9518 Fax:886-2-2219-9528

EC Declaration of Conformity

English	Hereby, PLANET Technology Corporation , declares that this 802.11n Wireless Presentation Gateway is in compliance with the essential requirements and other relevant provisions of Directive 1999/5/EC.	Lietuviškai	Šiuo PLANET Technology Corporation , skelbia, kad 802.11n Wireless Presentation Gateway tenkina visus svarbiausius 1999/5/EC direktyvos reikalavimus ir kitas svarbias nuostatas.
Česky	Společnost PLANET Technology Corporation , tímto prohlašuje, že tato 802.11n Wireless Presentation Gateway splňuje základní požadavky a další příslušná ustanovení směrnice 1999/5/EC.	Magyar	A gyártó PLANET Technology Corporation , kijelenti, hogy ez a 802.11n Wireless Presentation Gateway megfelel az 1999/5/EK irányelv alapkövetelményeinek és a kapcsolódó rendelkezéseknek.
Dansk	PLANET Technology Corporation , erklærer herved, at følgende udstyr 802.11n Wireless Presentation Gateway overholder de væsentlige krav og øvrige relevante krav i direktiv 1999/5/EF	Malti	Hawnhekk, PLANET Technology Corporation , jiddikjara li dan 802.11n Wireless Presentation Gateway jikkonforma mal-htigijiet essenzjali u ma provvedimenti oħrajn relevanti li hemm fid-Direttiva 1999/5/EC
Deutsch	Hiermit erklärt PLANET Technology Corporation , dass sich dieses Gerät 802.11n Wireless Presentation Gateway in Übereinstimmung mit den grundlegenden Anforderungen und den anderen relevanten Vorschriften der Richtlinie 1999/5/EG befindet". (BMW i)	Nederlands	Hierbij verklaart, PLANET Technology Corporation , dat 802.11n Wireless Presentation Gateway in overeenstemming is met de essentiële eisen en de andere relevante bepalingen van richtlijn 1999/5/EG
Eesti keeles	Käesolevaga kinnitab PLANET Technology Corporation , et see 802.11n Wireless Presentation Gateway vastab Euroopa Nõukogu direktiivi 1999/5/EC põhinõuetele ja muudele olulistele tingimustele.	Polski	Niniejszym firma PLANET Technology Corporation , oświadcza, że 802.11n Wireless Presentation Gateway spełnia wszystkie istotne wymogi i klauzule zawarte w dokumencie „Directive 1999/5/EC”.
Ελληνικά	<i>ΜΕ ΤΗΝ ΠΑΡΟΥΣΑ, PLANET Technology Corporation, ΔΗΛΩΝΕΙ ΟΤΙ ΑΥΤΟ 802.11n Wireless Presentation Gateway ΣΥΜΜΟΡΦΩΝΕΤΑΙ ΠΡΟΣ ΤΙΣ ΟΥΣΙΩΔΕΙΣ ΑΠΑΙΤΗΣΕΙΣ ΚΑΙ ΤΙΣ ΛΟΙΠΕΣ ΣΧΕΤΙΚΕΣ ΔΙΑΤΑΞΕΙΣ ΤΗΣ ΟΔΗΓΙΑΣ 1999/5/ΕΚ</i>	Português	PLANET Technology Corporation , declara que este 802.11n Wireless Presentation Gateway está conforme com os requisitos essenciais e outras disposições da Directiva 1999/5/CE.
Español	Por medio de la presente, PLANET Technology Corporation , declara que 802.11n Wireless Presentation Gateway cumple con los requisitos esenciales y cualesquiera otras disposiciones aplicables o exigibles de la Directiva 1999/5/CE	Slovensky	Výrobca PLANET Technology Corporation , týmto deklaruje, že táto 802.11n Wireless Presentation Gateway je v súlade so základnými požiadavkami a ďalšími relevantnými predpismi smernice 1999/5/EC.
Français	Par la présente, PLANET Technology Corporation , déclare que les appareils du 802.11n Wireless Presentation Gateway sont conformes aux exigences essentielles et aux autres dispositions pertinentes de la directive 1999/5/CE	Slovensko	PLANET Technology Corporation , s tem potrjuje, da je ta 802.11n Wireless Presentation Gateway skladen/a z osnovnimi zahtevami in ustreznimi določili Direktive 1999/5/EC.
Italiano	Con la presente, PLANET Technology Corporation , dichiara che questo 802.11n Wireless Presentation Gateway è conforme ai requisiti essenziali ed alle altre disposizioni pertinenti stabilite dalla direttiva 1999/5/CE.	Suomi	PLANET Technology Corporation , vakuuttaa täten että 802.11n Wireless Presentation Gateway tyyppinen laite on direktiivin 1999/5/EY oleellisten vaatimusten ja sitä koskevien direktiivin muiden ehtojen mukainen.
Latviski	Ar šo PLANET Technology Corporation , apliecinu, ka šī 802.11n Wireless Presentation Gateway atbilst Direktīvas 1999/5/EK pamatprasībām un citiem atbilstošiem noteikumiem.	Svenska	Härmed intygar, PLANET Technology Corporation , att denna 802.11n Wireless Presentation Gateway står i överensstämmelse med de väsentliga egenskapskrav och övriga relevanta bestämmelser som framgår av direktiv 1999/5/EG.