

## 12-Port Gigabit IEEE 802.3at PoE+ Managed Injector Hub (360 watts)

PLANET HPOE Managed PoE Injector Hub series, a cost-effective and quick PoE solution, is designed to perfectly upgrade an existing network infrastructure to IEEE 802.3at Power over Ethernet Plus network system without replacing the existing Ethernet Switch.



### *A Perfect Managed PoE+ Injector Hub with Full Power Budget*

The HPOE-1200G is a high-density, rack-mountable managed PoE+ injector hub featuring PLANET intelligent PoE functions through web user interface for remote management. It provides 12 10/100/1000BASE-T Ethernet ports featuring 802.3at PoE+ injector with a total PoE budget of 360 watts. Each PoE port can deliver up to 36-watt power over Cat.5/5e/6 Ethernet UTP cables which allow data and power to transmit simultaneously to a remote 802.3at/af powered device (PD). The HPOE-1200G enables centralization of the power supply and optimizes the installation and power management of remote network devices, and provides a quick, safe and cost-effective Power over Ethernet network solution for small businesses and enterprises.

### *Quick and Easy PoE Network Deployment*

The HPOE-1200G is installed between a regular Ethernet Switch and the PDs. There are totally 24 RJ45 STP ports on the front panel of the HPOE-1200G, of which the 12 ports are on the lower stack functioned as "Data input" while the other 12 ports are on the upper stack functioned as "PoE (Data and Power) output". Both power and data are transferred simultaneously over the UTP cables to PDs without affecting the existing network performance and functions.

### Interface

- Complies with the IEEE 802.3, IEEE 802.3u and IEEE 802.3ab Ethernet standards
- 24-port RJ45
  - 12-port 10/100/1000Mbps "Data input"
  - 12-port 10/100/1000Mbps "Data + Power output"
- One 10/100/1000BASE-T management port

### Power over Ethernet

- Complies with IEEE 802.3at and IEEE 802.3af Power over Ethernet mid-span PSE
- Up to 12 IEEE 802.3at/802.3af devices powered
- 360-watt PoE budget
- Supports PoE power up to 30.8 watts (802.3at PoE)/15.4 watts (802.3af PoE) for each PoE port
- Automatically detects powered device (PD)
- Circuit protection prevents power interference between ports
- Remote power feeding up to 100m

### PoE Management

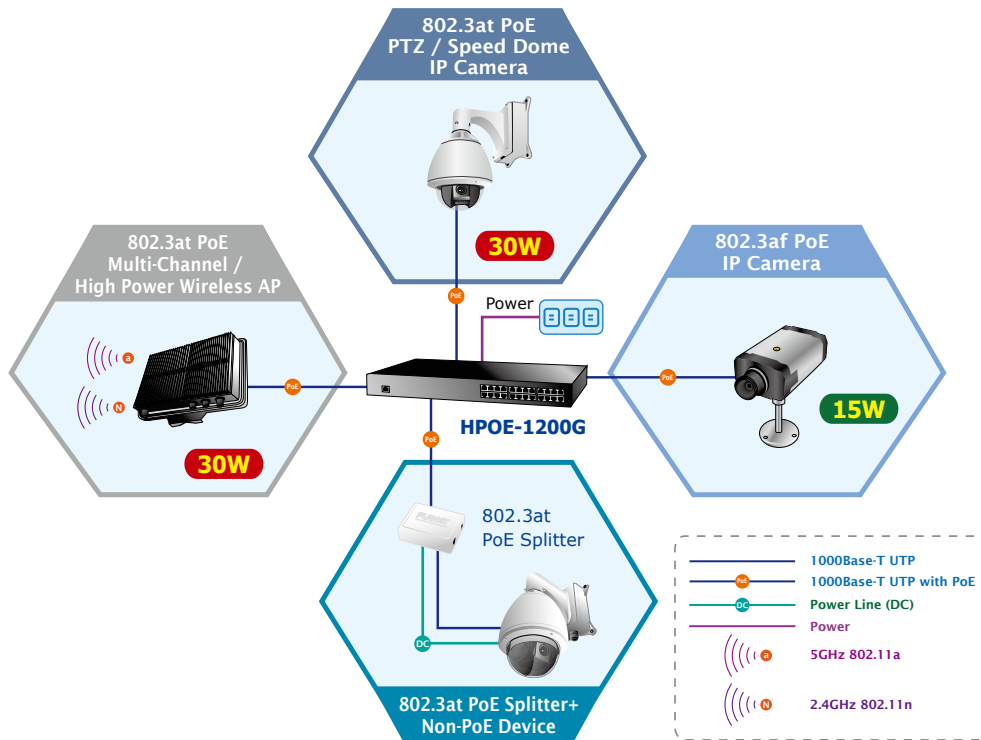
- Total PoE power budget control
- Per port PoE power schedule
- PoE function enable/disable
- Per port PoE function enable/disable
- PoE port power feeding priority
- PD classification detection
- Over temperature protection
- PD alive-check

### Management

- Web interface for remote management
- Supports Network Time Protocol (NTP)
- Firmware upgrade through Web interface
- PLANET Smart Discovery utility automatically finds PLANET devices on the network
- SNMP trap for alarm notification of events
- System log/remote syslog

### Hardware

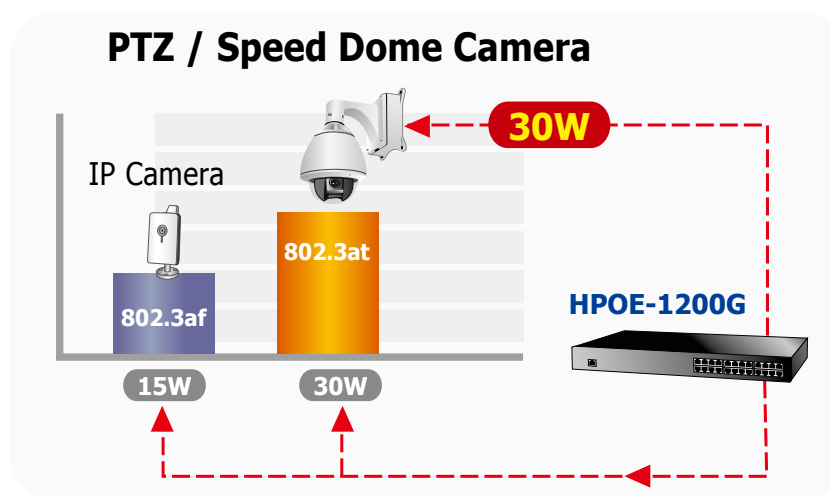
- 19-inch rack mountable; 1U height
- Reset button for resetting to default setting and system reboot
- LED indicators for PoE ready and PoE activity
- LED indicators for power alert and fan alert
- FCC Part 15 Class A, CE



With data and Power over Ethernet from one unit, the HPOE-1200G can reduce power cable deployment and eliminate the need for dedicated electrical outlets on the wall, ceiling or any unreachable place.

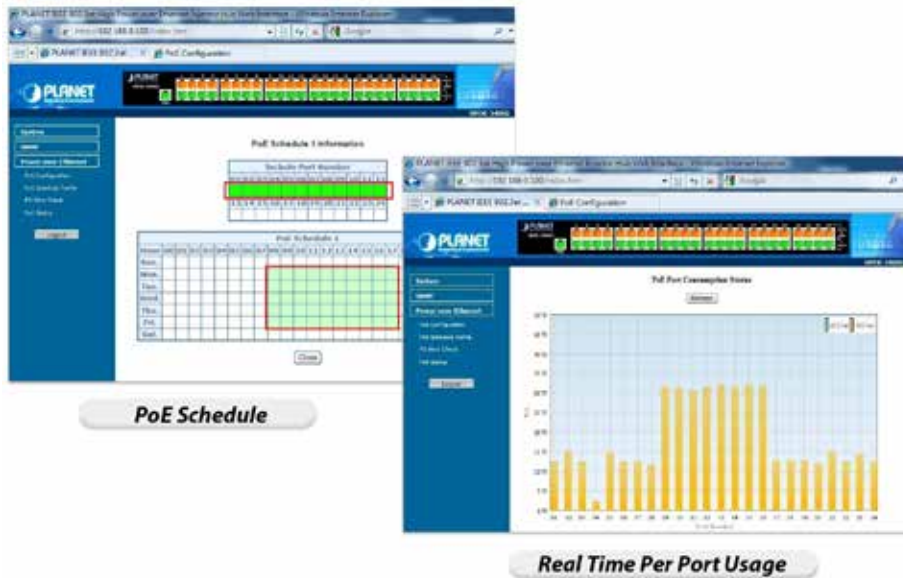
*IEEE 802.3at PoE+ Standard Compliance*

The PoE in-line power adopting the IEEE 802.3at Power over Ethernet Plus standard makes the HPOE-1200G able to deliver per port up to 36 watts of power to each remote PoE compliant powered device. It possesses double amount of power capability than the conventional 802.3af PoE and is an ideal solution to satisfy the growing demand for higher power consuming network PDs, such as PTZ (Pan, Tilt and Zoom), speed dome network cameras, color touch-screen or video and voice over IP (VoIP) telephones, multi-channel 802.11ac wireless LAN access points and other network devices.



*Friendly Web Management Interface*

To efficiently manage the powered devices, the HPOE-1200G provides simple Web management interface in which administrators can control the system and PoE functions for powered devices. It can automatically detect the power status of each port and show messages on its Web management interface. These features also provide users with a cost-effective way to manage the device via Internet whenever they are at work or at home.



*Built-in Unique PoE Functions for Powered Device Management*

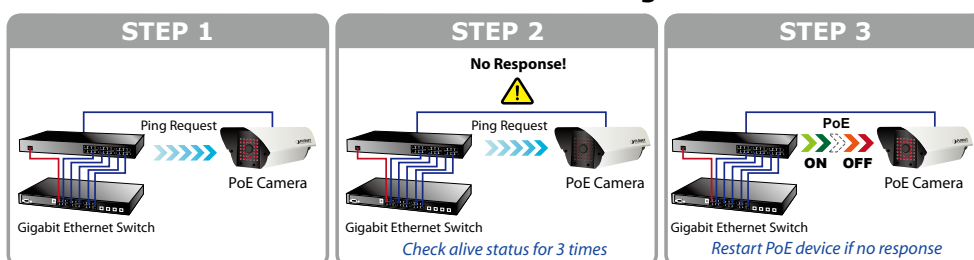
As it is the managed PoE Injector Hub for VoIP, wireless and surveillance networks, the HPOE-1200G features the following special PoE management functions:

- PoE schedule
- PD alive check
- Scheduled power recycling
- PoE usage monitoring
- Over temperature protection

*Intelligent Powered Device Alive Check*

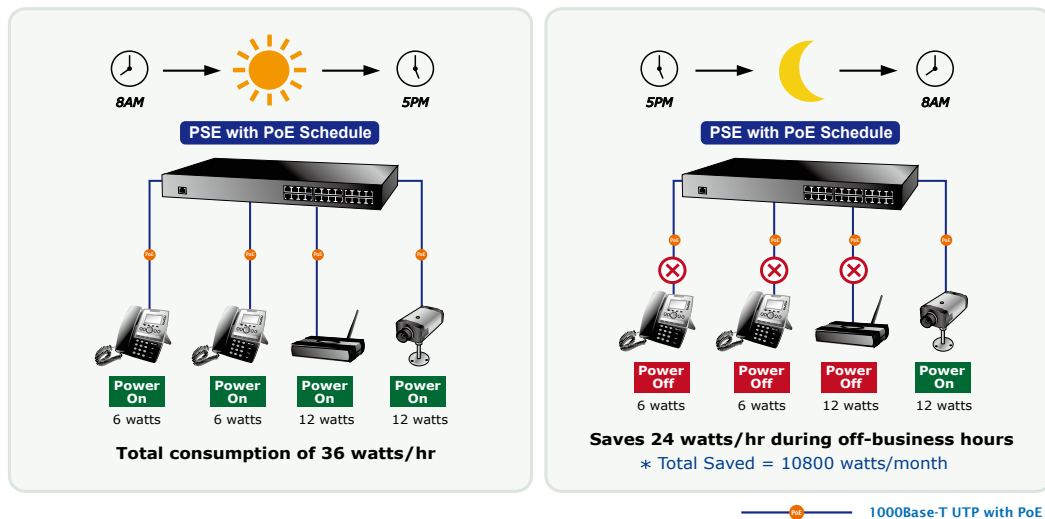
PLANET's Managed PoE products adopt not only Power over Ethernet technology, but also automated PD monitoring and real-time PoE status. The HPOE-1200G can be configured to monitor connected PD's status in real time via ping action through the uplinked Ethernet switch. Once the PD stops working and responding, the HPOE-1200G will recycle the PoE port power and bring the PD back to work. It also will greatly enhance the network reliability in that the PoE port will reset the PD power, thus reducing administrator's management burden.

**PoE PD Alive-checking**



*PoE Schedule for Energy Saving*

Under the trend of energy saving worldwide and contributing to environmental protection on the Earth, the HPOE-1200G can effectively control the power supply besides its capability of giving high watts power. The built-in “PoE schedule” function helps you to enable or disable PoE power feeding for each PoE port during specified time intervals and it is a powerful function to help SMBs or enterprises save power and money.



*Advanced Power Management*

To facilitate power management, the HPOE-1200G comes with powerful PoE management features such as over temperature protection, usage threshold alert and auto power allocation to prevent power budget overloading. The PoE power budget can be allocated by priorities or classification and sent alert event logs when power usage reaches the defined threshold.

*PoE Usage Monitoring*

Via the power usage chart in the web management interface, the HPOE-1200G enables the administrator to monitor the status of the power usage of the connected PDs in real time.

*High Power Budget for PoE Extension*

With 36-watt PoE output capability, the HPOE-1200G can extend much longer distance by using PLANET PoE Extender for powering up the PoE PD which can be installed over more than 100 meters away. By daisy-chaining multiple PLANET PoE Extenders, it offers the great flexibility of doubling, tripling or quadrupling the distance of PoE network.

*Smart Fan Design for Silent Operation*

The HPOE-1200G features a low noise design and an effective ventilation system. It supports the smart fan technology that automatically controls the speed of the built-in fan to reduce noise and maintain the temperature of the PoE injector hub for optimal power output capability. The HPOE-1200G is able to operate reliably, stably and quietly in any environment without affecting its performance.

## Applications

### Gigabit PoE+ Network Deployment

The HPOE-1200G provides the easiest way to power your Ethernet devices such as IP camera on the ceiling and the wireless access point installed on the top of the building. With 12 10/100/1000BASE-T Gigabit Ethernet ports, the HPOE-1200G supports full 52V DC power for any remote IEEE 802.3af/IEEE 802.3at powered device (PD).

To control the power system of your networking devices, the HPOE-1200G can directly co-work with network devices such as PoE IP phone to build VoIP telephony network in the office. Furthermore, the PoE hub can be directly connected to any third-party IEEE 802.3af/802.3at compliant devices installed within 100 meters.



## Specifications

Model	HPOE-1200G	
<b>Hardware</b>		
Hardware Version	4	
Interface	"Data" Input Ports	12 x RJ45
	"Data + Power" Output Ports	12 x RJ45
	Management Port	1 x RJ45; 10/100/1000BASE-T, auto-negotiation, auto-MDI/MDIX
Data Rate	10/100/1000Mbps	
LED	System: SYS PWR x 1 (green) PoE Failure x 1 (red) Fan Failure x 1 (red) Per PoE Port: PoE-in-use x 1 (green) Management port x 2: 1000 (green), 10/100(orange)	
Network Cable	10BASE-T: 4-pair UTP Cat5 up to 100m (328ft) 100BASE-TX: 4-pair UTP Cat5 up to 100m (328ft) 1000BASE-T: 4-pair UTP Cat5e/6 up to 100m (328ft) EIA/TIA- 568 100-ohm STP (100m)	
Power Requirements	100-240V AC, 50/60 Hz, 6A	
Power Consumption	440 watts (max.)	
Ventilation	Fan x 3	
Dimensions (W x D x H)	440 x 300 x 44mm	
<b>Power over Ethernet</b>		
PoE Power Supply Type	Mid-span	
PoE Power Output	Per port DC 52V 30.8/15.4 watts	
Power Pin Assignment	4/5(-), 7/8(+)	
PoE Power Budget	360 watts	
Number of 802.3af PDs (Class 0, 1, 2, 3) can be powered	12	
Number of 802.3at PDs (Class 1, 2, 3) can be powered	12	
Number of 802.3at PDs (Class 0, 4) can be powered	12	
<b>Management</b>		
Management Interface	Web, PLANET Smart Discovery Lite	
PoE Management	Power limit by consumption and classification PoE admin mode Per port power schedule Per port power enable/disable Power feeding priority Over temperature protection Current per port usage and status Total power consumption	
Management Feature	Setup of system/management functions Web firmware upgrade SNMP trap for alarm notification of events	
<b>Standards Conformance</b>		
Regulatory Compliance	FCC Part 15 Class A, CE	
Standards Compliance	IEEE 802.3 10BASE-T Ethernet IEEE 802.3u 100BASE-TX Fast Ethernet IEEE 802.3ab 1000BASE-T Gigabit Ethernet IEEE 802.3at Power over Ethernet Plus IEEE 802.3af Power over Ethernet RFC 768: UDP RFC 791: IP RFC 2068 HTTP RFC 1157: SNMP v1 RFC 1902: SNMP v2c RFC 5424: Syslog	
<b>Environments</b>		
Operating	Temperature: 0 ~ 50 degrees C Relative Humidity: 5 ~ 90% (non-condensing)	
Storage	Temperature: -10 ~ 70 degrees C Relative Humidity: 5 ~ 90% (non-condensing)	

## Ordering Information

HPOE-1200G	12-Port Gigabit IEEE 802.3at PoE+ Managed Injector Hub (360 watts)
------------	--

## Related Products

HPOE-2400G	24-Port Gigabit IEEE 802.3at PoE+ Managed Injector Hub (720 watts)
POE-1200G	12-Port Gigabit IEEE 802.3at PoE+ Managed Injector Hub (220 watts)
POE-2400G	24-Port Gigabit IEEE 802.3at PoE+ Managed Injector Hub (440 watts)
ICA-2250VT	Industrial PoE Plus Outdoor IR IP Camera
ICA-2500	5 Mega-pixel PoE Box IP Camera
ICA-3250V	Full HD Outdoor IR PoE IP Camera
ICA-3350P	3 Mega-pixel Remote Focus Bullet IR IP Camera
ICA-E3550V	5 Mega-pixel Bullet IR PoE IP Camera with Extended Support
ICA-4200V	Full HD 20M IR Vari-focal Dome IP Camera
ICA-4500V	5 Mega-pixel 20M IR Vari-focal Dome IP Camera
ICA-5250	Full HD Ultra-mini Vandal Dome
ICA-HM351	2 Mega-pixel 35M IR Outdoor Box PoE IP Camera
ICA-HM620	2 Mega-pixel PoE Plus Speed Dome Internet Camera
POE-152S	IEEE 802.3af Power over Ethernet Splitter
POE-162S	IEEE 802.3at Gigabit High Power over Ethernet Splitter
POE-E101	IEEE 802.3af Power over Ethernet Extender
POE-E201	IEEE 802.3at Power over Ethernet Extender
WNAP-C3220	802.11n Wireless Ceiling-mount PoE Access Point
WNAP-W2200	802.11n 300Mbps In-Wall Access Point w/USB Charger (EU Type)
WDAP-1750AC	1750Mbps 802.11ac Dual Band Wall-mount Enterprise Wireless Access Point
WDAP-C7200AC	1200Mbps 802.11ac Dual Band Ceiling-mount Wireless Access Point
WDAP-W7200AC	1200Mbps 802.11ac Dual Band Wall-mount Wireless Access Point
WDAP-C7400	900Mbps Dual Band Ceiling-mount Wireless Access Point
ICF-1800	HD Touch Screen Android Multimedia Conferencing Phone
VIP-1010PT	High Definition PoE IP Phone (1-Line)
VIP-2020PT	Enterprise HD PoE IP Phone (2-Line)
VIP-5060PT	Professional HD PoE IP Phone (6-Line)