

## Quick Installation Guide

WDL-U601AC

433Mbps 802.11AC Dual Band Wireless USB Adapter



## 1. Package Contents

Thank you for choosing PLANET Wireless USB Adapter. Before installing the adapter, please verify the contents inside the package box.

WDL-U601AC



Quick Guide



CD-ROM



If there is any item missing or damaged, please contact the seller immediately.

- 1 -

## Before Installation



Note

1. If you are currently using a wireless adapter, please uninstall the existing driver and utilities first.
2. The following installation is performed in Windows 7. The procedures in other OS's are similar.

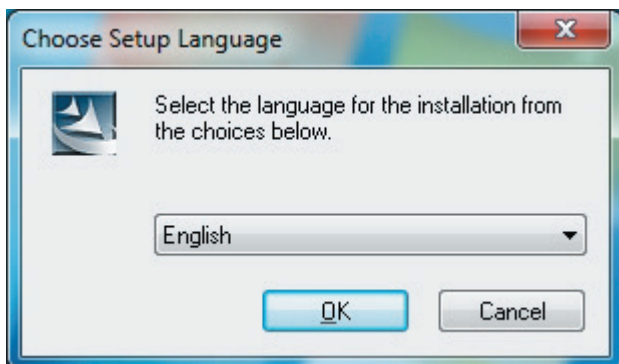
## 2. Installation

**Step 1 :** Insert the bundled CD into the CD-ROM drive. Then a web-menu will appear. Click the **"Driver"** hyperlink to initiate the installation wizard.



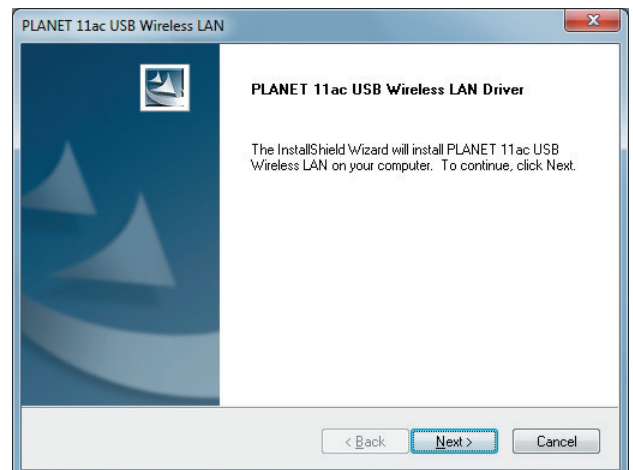
- 2 -

**Step 2 :** Choose the setup language.



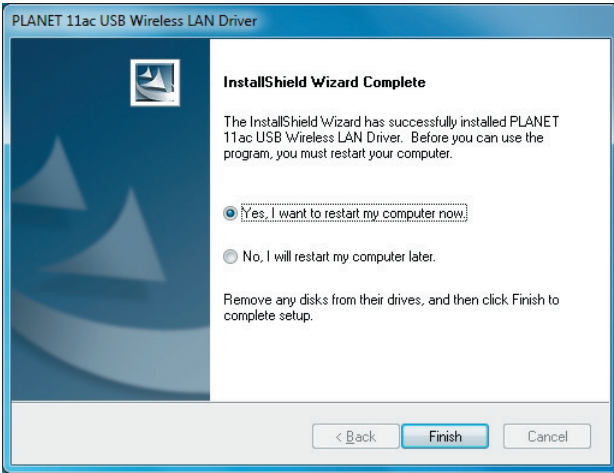
- 3 -

**Step 3 :** Click the **"Next"** button to start installing the driver.



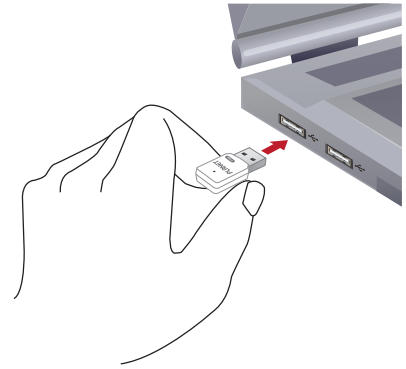
- 4 -

**Step 4 :** Please select **“Yes, I want to restart my computer now”** and click **“Finish”** to finish the installation.

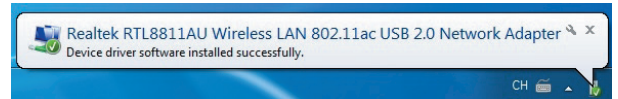


- 5 -

**Step 5 :** Insert the USB wireless network card into an empty USB 2.0 port of your computer when computer reboots. Never use force to insert the card; if you feel it's stuck, flip the card over and try again.

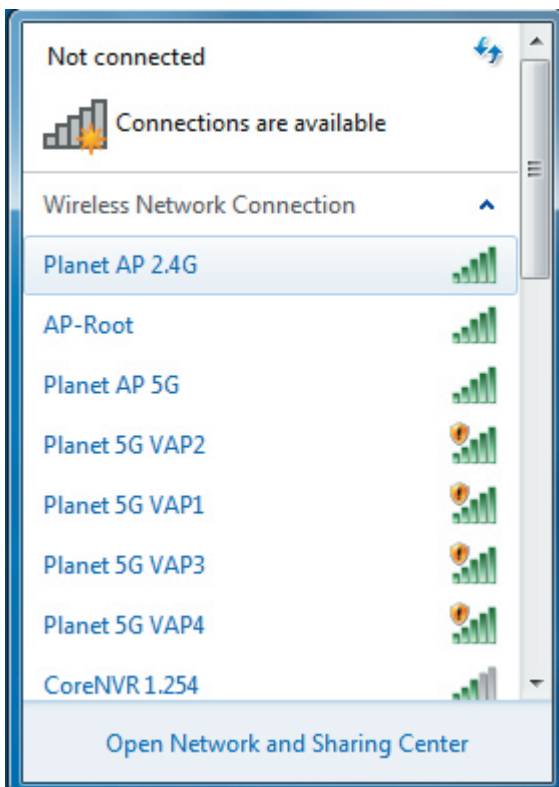


**Step 6 :** The following message will be shown below.



- 6 -

**STEP 7 :** You can start to surf the internet by connecting to the router.



- 7 -

## Further Information:

The steps above introduce the simple installation of the WDL-U601AC. For further configuration of Wi-Fi Protect Setup (WPS), Software AP, etc, please refer to the user's manual in the CD. If you have further questions, please contact the local dealer or distributor where you purchased this product.



2011-E23230-000

- 8 -