

User's Manual



4-/16-Channel Hybrid Digital Video Recorder

- ▶ HDVR-430
- ▶ HDVR-1630



Copyright

Copyright © 2016 by PLANET Technology Corp. All rights reserved. No part of this publication may be reproduced, transmitted, transcribed, stored in a retrieval system, or translated into any language or computer language, in any form or by any means, electronic, mechanical, magnetic, optical, chemical, manual or otherwise, without the prior written permission of PLANET.

PLANET makes no representations or warranties, either expressed or implied, with respect to the contents hereof and specifically disclaims any warranties, merchantability or fitness for any particular purpose. Any software described in this manual is sold or licensed "as is". Should the programs prove defective following their purchase, the buyer (and not PLANET, its distributor, or its dealer) assumes the entire cost of all necessary servicing, repair, and any incidental or consequential damages resulting from any defect in the software. Further, PLANET reserves the right to revise this publication and to make changes from time to time in the contents hereof without obligation to notify any person of such revision or changes.

All brand and product names mentioned in this manual are trademarks and/or registered trademarks of their respective holders.

Federal Communication Commission Interference Statement

This equipment has been tested and found to comply with the limits for a Class B digital device, pursuant to Part 15 of FCC Rules. These limits are designed to provide reasonable protection against harmful interference in a residential installation. This equipment generates, uses, and can radiate radio frequency energy and, if not installed and used in accordance with the instructions, may cause harmful interference to radio communications. However, there is no guarantee that interference will not occur in a particular installation. If this equipment does cause harmful interference to radio or television reception, which can be determined by turning the equipment off and on, the user is encouraged to try to correct the interference by one or more of the following measures:

1. Reorient or relocate the receiving antenna.
2. Increase the separation between the equipment and receiver.
3. Connect the equipment into an outlet on a circuit different from that to which the receiver is connected.
4. Consult the dealer or an experienced radio technician for help.

FCC Caution

To assure continued compliance, for example, use only shielded interface cables when connecting to computer or peripheral devices. Any changes or modifications not expressly approved by the party responsible for compliance could void the user's authority to operate the equipment.

This device complies with Part 15 of the FCC Rules. Operation is subject to the following two conditions: (1) This device may not cause harmful interference, and (2) this device must accept any interference received, including interference that may cause undesired operation.

Federal Communication Commission (FCC) Radiation Exposure Statement

This equipment complies with FCC radiation exposure set forth for an uncontrolled environment. In order to avoid the possibility of exceeding the FCC radio frequency exposure limits, human proximity to the antenna shall not be less than 20 cm (8 inches) during normal operation.

Safety

This equipment is designed with the utmost care for the safety of those who install and use it. However, special attention must be paid to the dangers of electric shock and static electricity when working with electrical equipment. All guidelines of this and of the computer manufacture must therefore be allowed at all times to ensure the safe use of the equipment.

CE Mark Warning

This is a Class B product. In a domestic environment, this product may cause radio interference, in which case the user may be required to take adequate measures.

WEEE Regulation



To avoid the potential effects on the environment and human health as a result of the presence of hazardous substances in electrical and electronic equipment, end users of electrical and electronic equipment should understand the meaning of the crossed-out wheeled bin symbol. Do not dispose of WEEE as unsorted municipal waste; they should be collected separately.

Revision

User's Manual of PLANET Hybrid Digital Video Recorder

Model: HDVR-430/HDVR-1630

Rev: 3.0 (March 2016)

Part No. EM-HDVR-430_1630(v3)_v3.0

Table of Contents

Chapter 1. Product Introduction.....	7
1.1 Package Contents.....	7
1.2 Overview	8
1.3 Features	11
1.4 Product Specifications.....	12
Chapter 2. Hardware Interface	15
2.1 Physical Descriptions	15
2.2 Hardware Installation.....	17
2.2.1 Installing Hard Disk	17
Chapter 3. Connecting to the HDVR	19
3.1 Using Search Tool Utility	19
3.2 Accessing HDVR with its default IP address.....	23
Chapter 4. Basic Operation	25
4.1 Main/Live Viewing	25
4.2 Preview.....	25
4.3 Desktop Shortcut Menu.....	26
4.3.1 Main Menu.....	26
4.3.2 Playback.....	27
4.3.3 Record.....	28
4.3.4 Alarm Output	29
4.3.5 PTZ.....	29
4.3.6 Color Setting.....	31
4.3.7 Output Adjust.....	32
4.3.8 Logout.....	32
4.3.9 Window Switch	33
Chapter 5. Main Menu	34
5.1 Main Menu Navigation.....	34
5.2 Record.....	37
5.2.1 Record Configuration	37
5.2.2 Playback.....	38
5.2.3 Backup.....	39
5.3 Alarm Function	40
5.3.1 Motion Detection	41
5.3.2 Video Blind	44

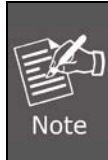
5.3.3	Video Loss.....	45
5.3.4	Alarm Input	46
5.3.5	Alarm Output	47
5.3.6	Abnormality	48
5.4	System Setup	48
5.4.1	General.....	49
5.4.2	Encode Setup.....	50
5.4.3	Network Setup.....	52
5.4.4	NetService.....	53
5.4.5	GUI Display	61
5.4.6	PTZ/RS485 Device.....	63
5.4.7	RS232.....	65
5.4.8	Tour.....	66
5.4.9	Channel Management	67
5.5	Advanced	73
5.5.1	HDD Management.....	73
5.5.2	Account.....	74
5.5.3	Online User	78
5.5.4	TV Adjust	78
5.5.5	Auto Maintain.....	78
5.5.6	Restore	79
5.5.7	Upgrade.....	79
5.5.8	Device Info	80
5.5.9	Import/Export.....	81
5.6	Info.....	81
5.6.1	HDD Info.....	82
5.6.2	BPS	83
5.6.3	Log.....	84
5.6.4	Version.....	85
5.7	Shut Down System.....	85
Chapter 6.	Web Remote Management.....	86
6.1	Connecting to HDVR	86
6.2	Live View on Browser	87
Appendix A:	Ping IP Address	88
Appendix B:	Planet DDNS Application	89
Appendix C:	Configuring Port Forwarding Manually	90

Chapter 1. Product Introduction

1.1 Package Contents

The package should contain the following items:

- HDVR Unit x 1
- Foot Pad x 4
- USB Mouse x 1
- Screw Kit x 1
- Power Adapter x 1
- User's Manual CD x 1
- Quick Installation Guide x 1
- SATA Cable x 1
- SATA Power Cable x 1
- RS485 Connector x 1



Note

1. *If any of the above items are missing, please contact your dealer immediately.*
2. *Using the power supply that is not the one included in the HDVR packet will cause damage and void the warranty for this product.*

1.2 Overview

Efficient Solution for Integrating IP and Analog Cameras

PLANET HDVR-430 and HDVR-1630 are hybrid DVR recorders which are able to record video and data from traditional analog, AHD (analog high definition) and network IP security cameras. The advantage of a hybrid DVR recorder is that it lets you use currently installed analog security equipment along with newer network IP technology. This enables you to upgrade your surveillance system to IP equipment at your own pace, according to your budget. HDVR series is the 4-/16-channel embedded system with HDMI local display and features recording, live view, playback and backup functions, etc. With easy-to-remember DDNS feature, the HDVR can be placed either in LAN or WAN for easy installation. Besides, designed for various surveillance applications via RS485 interface, the HDVR is capable of controlling most types of protocols. For the purpose of general monitoring, the HDVR series offers app viewer, Web browser and CMS (Central Management Software) for multi-platform remote access, thus making it an ideal solution for various applications, such as retail stores, communities, SMBs, supermarkets, restaurants and schools.



Hybrid Integration

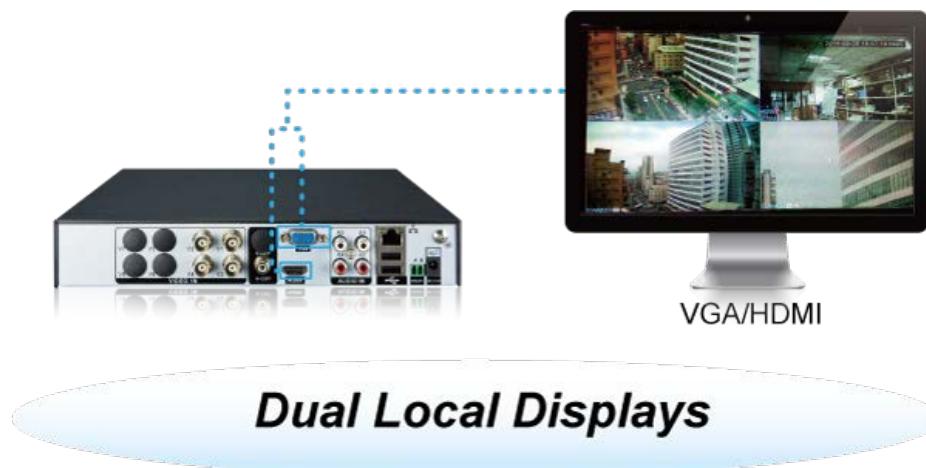
HDVR series allows each of its 4-/16 channels to be connected to either an analog camera or an IP camera. If you already have analog cameras and want to add on a few IP cameras, the HDVR series is definitely your ideal choice. In addition, the HDVRs comply with ONVIF and are interoperable with any third-party IP cameras, thus omitting compatibility issue and allowing you to add more cameras.

Hybrid Integrated IP and AHD System



High Resolution Local Display

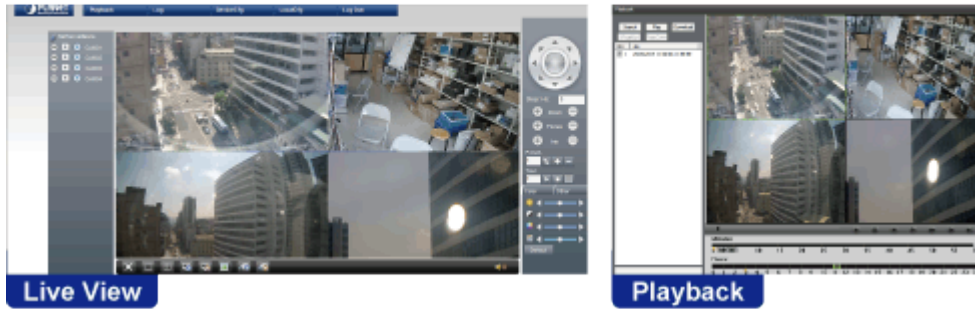
The HDVR series provides HDMI and VGA video output interfaces for dual local displays, which can be connected to HDMI monitor or VGA monitor for live view monitoring with video output of maximum 1920 x 1080 resolutions. Due to local display, it can eliminate the need for a separate PC to view video from the unit. Besides, it also can be operated with the USB mouse to configure and monitor all the system easily.



Real-time Remote Monitoring

Video from the HDVR system can be accessed with Web browsers and mobile devices. With remote monitoring, you can view live and recorded video, allowing for easier monitoring of your video deployments, and the ability to react quickly to alarms and events.

Real-time, Remote Monitoring



Manage via Central Management System (CMS)

Not just for small-scale applications such as retail stores and SMBs, the HDVR system is expandable for multi-site management with the bundled CMS software. The CMS software is able to manage up to 256 channels of cameras simultaneously. With friendly graphic interface, users can control any cameras or HDVRs easily and make a quick response when event is triggered. With CMS support, users are able to make surveillance more efficient.



1.3 Features

➤ **Hardware**

- Embedded, highly-reliable standalone HDVR
- Supports 4-/16-ch BNC connectors
- Supports dual local display (VGA and HDMI)
- Supports 3.5" SATA x 1 HDD
- Supports RS485 for PTZ control

➤ **Video and Audio**

- Supports H.264 compressions
- Video resolution up to AHD-NH (1920 x 1080)
- Supports hybrid mode for combination of IP, traditional analog and AHD cameras
- 2-way audio support with enhanced audio quality

➤ **Video Recording and Backup**

- Simultaneous recording and live video streams
- Manual or scheduled recording of 4/16 cameras simultaneously
- Video recycling function records suspicious events 24/7
- Exports recorded video file in AVI format to USB device
- Instant Event Notification

➤ **Network Service**

- Easy access with PLANET Dynamic DNS and built-in NTP Server
- Supports PPPoE, DHCP and manual settings

➤ **Easy Installation and Management**

- ONVIF compliant for interoperability
- Supports multiple languages
- Automatically discovered by management software
- Web-based and management utility for easy configuration
- Up to 256 channels with the central management software
- Supports two USB2.0 ports for mouse control and backup
- Supports mobile phone remote viewer, Web UI and CMS

1.4 Product Specifications

Product	HDVR-430	HDVR-1630
Hardware		
Ethernet	1 x RJ45, 10/100BASE-TX	
BNC Interface	4	16
USB Interface	2 x USB 2.0 for backup device and mouse	
Video Interface	VGA / HDMI video interface	
Audio Interface	4 x Audio-in, 1 x Audio-out	2 x Audio-in, 1 x Audio-out
Storage Device	1 x 3.5" SATA hard disk connector (Max. 4TB)	
LED	Power, Record, Alarm	
Button	Menu, ESC, Direction & Enter	
Camera		
Max. Channels for Cameras	4	16
Additional Camera	Manual/Smart Camera Search	
Video		
Video System	PAL (625 lines, 50fps); NTSC (525 lines, 60fps)	
Compression	H.264	
Resolution	IP camera: 1080p/720p Analog camera: AHD-NH (1080n)/AHD-M (720p)	
Encode Capacity	4-ch AHD	16-ch AHD
Decode Capacity	1-ch AHD	4-ch AHD
Hybrid Mode	<ul style="list-style-type: none"> ● Analog cameras: <ul style="list-style-type: none"> - 4-ch AHD-NH (1080n) - 4-ch AHD-M (720p) - 4-ch AHD-L (960H) ● Analog cameras & IP cameras: <ul style="list-style-type: none"> 2-ch AHD-M (720p) & 2-ch 720p 	<ul style="list-style-type: none"> ● Analog cameras: <ul style="list-style-type: none"> - 16-ch AHD-NH (1080n) - 16-ch AHD-M (720p) - 8-ch AHD-M (720p) - 16-ch AHD-L (960H) ● Analog cameras & IP cameras: <ul style="list-style-type: none"> 8-ch AHD-M (720p) & 8-ch 720p, 4-ch AHD-M (720p) &

	<ul style="list-style-type: none"> ● IP cameras: <ul style="list-style-type: none"> - 8-ch 1080p - 8-ch 720p - 4-ch 1080p - 4-ch 720p - 1-ch 1080p 	<ul style="list-style-type: none"> ● IP cameras: <ul style="list-style-type: none"> - 20-ch 960H - 4-ch 1080p - 1-ch 1080p & 8-ch 720p
Motion Detection	Zones: 192 (16 x 12) detection zones Sensitivity: multi-level sensitivity (only local channels)	
Audio		
Audio Type	2-way	
Audio Format	G.711A	
Live View		
Display Division	1/4	1/4/8/9/16
Snapshot	Video snapshot in JPEG format	
Playback		
Record	Manual/Alarm/Motion Detection/Schedule	
Local Playback	1 ~ 4ch simultaneous playback; supports up to 4-channel playback (1ch real time)	1 ~ 16ch simultaneous playback; supports up to 4-channel playback (local input mode)
Play Method	Play Pause/Stop/Slow/Fast/Prev Frame/Next Frame Search by time/calendar/event/channel	
Download	Backup file to specific local HDD partition	
Monitor		
Display Quality	1920 x 1080, 1440 x 900, 1280 x 1024, 1280 x 720, 1024 x 768	
Network and Configuration		
Network Service	TCP/UDP/HTTP/DHCP/DNS/DDNS/RTSP/NTP/UPnP/FTP/SMTP	
Security	Password protection, IP address filtering	
Triggers and Event		
Event Type	System Events – <ul style="list-style-type: none"> ● No storage 	

	<ul style="list-style-type: none"> ● Storage Error ● Storage No Space ● Net Disconnection ● IP Conflict <p>Camera Events –</p> <ul style="list-style-type: none"> ● Motion Detection/Video Blind/Video Loss/DI
Event Action	<ul style="list-style-type: none"> ● Show Message ● Buzzer ● Mobile Reported ● Send e-mail ● FTP Upload ● Write Log
Management	
Remote Sessions	5
Privileges	Live View/Playback/System Configurations/Camera Configurations/Recording Configuration/Event Configuration/Maintenance
User Interface	<ul style="list-style-type: none"> ● Graphic local user interface (Operated by mouse) ● Web browser (IE) ● CMS utility
Log Type	All/System/Config/Storage/Alarm Event/Week Day/Account/Playback
Software Utility	Search utility/CMS/App
Environment	
Power	DC 12V, 2A
Consumption	15W (without HDD)
Operating Temperature	0~55 degrees C
Storage Temperature	0~60 degrees C
Humidity	10~90% (non-condensing)
Weight	1.7kg
Dimensions (W x D x H)	255 x 225 x 45 mm

Chapter 2. Hardware Interface

2.1 Physical Descriptions

Front Panel



LEDs	Status	Definitions
Alarm	Red	Event action
Rec	Green	Normal operation
Power	Red	System on
Buttons	Status	Definitions
Menu	Setup	Press to enter main menu
ESC	Return	Press to return to previous page
Direction & OK	Control and Enter	Press to select and enter

HDVR-430 Rear Panel



Connector	Description
V1-V4	Composite video signal (CVBS) input interface
A1-A4	The input interface of the audio signal
A-OUT	The output interface of the audio signal
LAN	The network interface of RJ45
HDMI	The output interface of the HDMI video signal
VGA	The output interface of the VGA video signal

Connector	Description
12V DC	12V 2A DC power
485+/485-	The interface of the alarm input, the alarm output and RS-485

HDVR-1630 Rear Panel



Connector	Description
V1-V16	Composite video signal (CVBS) input interface
A1-A2	The input interface of the audio signal
A-OUT	The output interface of the audio signal
LAN	The network interface of RJ45
HDMI	The output interface of the HDMI video signal
VGA	The output interface of the VGA video signal
12V DC	12V DC, 2A
485+/485-	The interface of the alarm input, the alarm output and RS-485

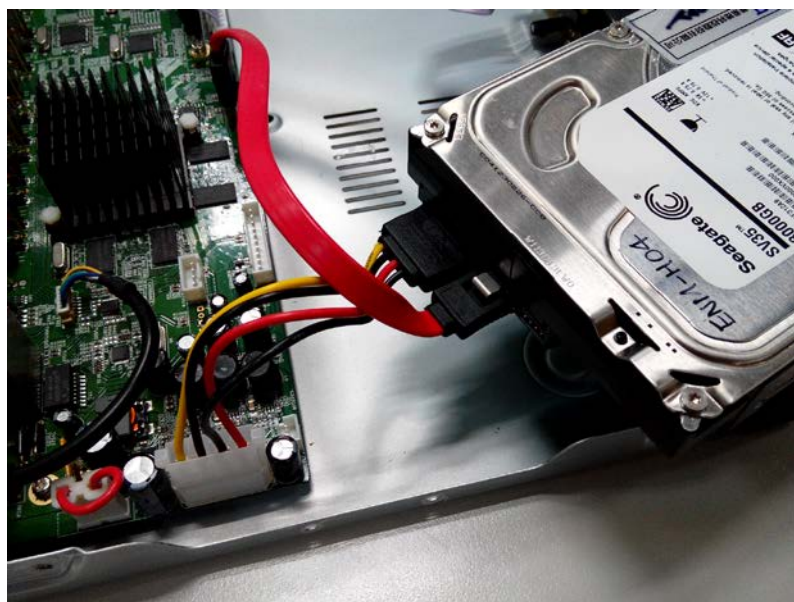
2.2 Hardware Installation

2.2.1 Installing Hard Disk

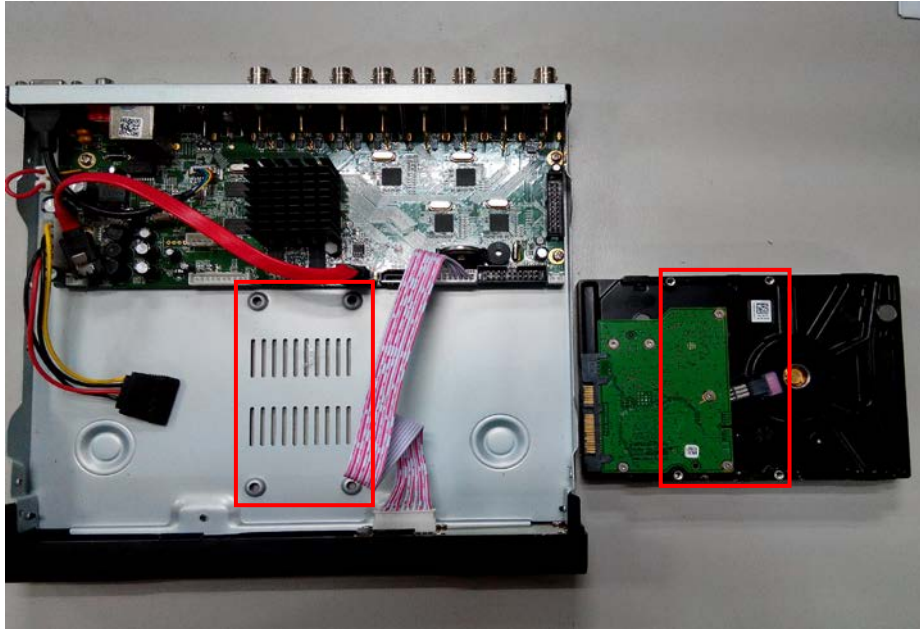
1. Remove the upper case.



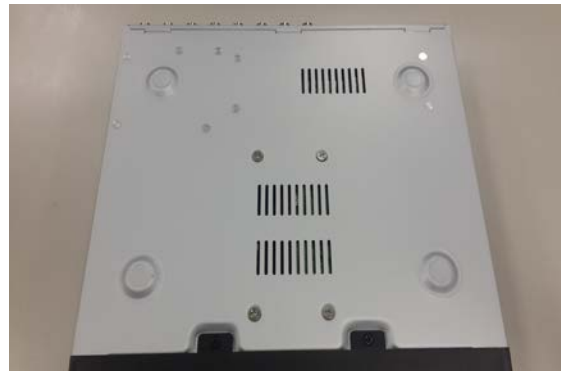
2. Plug the HDD power cable and SATA cable into the slot of the PCBA board and the HDD, respectively, making sure the connections are well done.



3. Please align the screw holes on the HDD with those on the HDVR case and secure them with the given screws.



4. After the HDD is secured, it should look like the one in the pictures (front and back) below:



Chapter 3. Connecting to the HDVR

There are various ways you can connect to the HDVR and below are the suggested methods for different network setups:

The HDVR is placed in a network with a DHCP server: Connect to the HDVR by using “HDVR Search Tool” Utility.

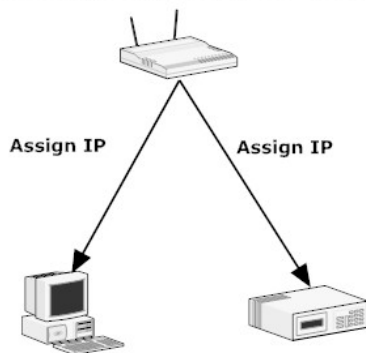
The HDVR is placed in a network without DHCP server (or you are connecting to it directly): Access HDVR with its default IP (192.168.0.20).

3.1 Using Search Tool Utility

If the HDVR is placed in a corporate network or a local area network where a DHCP server is already presented, please install the “Search Tool” utility from the bundled CD disk.

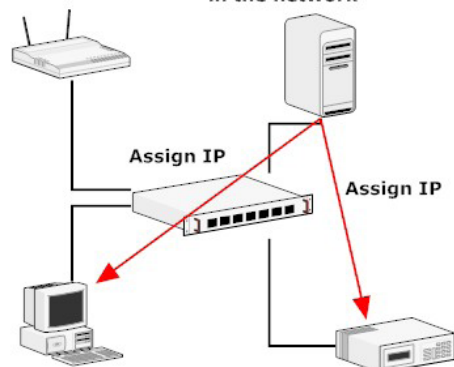
1.

Network gateway as the DHCP server



2.

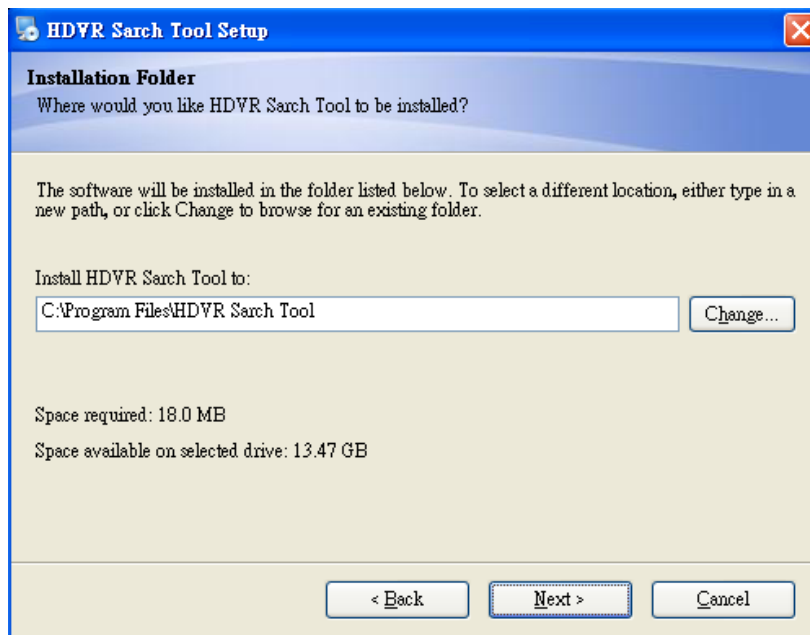
A separate DHCP server in the network



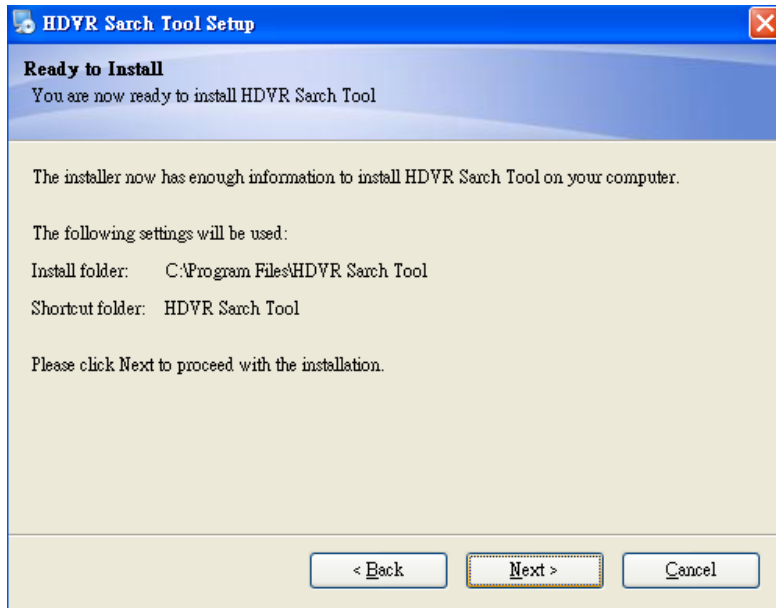
To begin, launch the “Search Tool” utility from the CD and proceed with the installation.



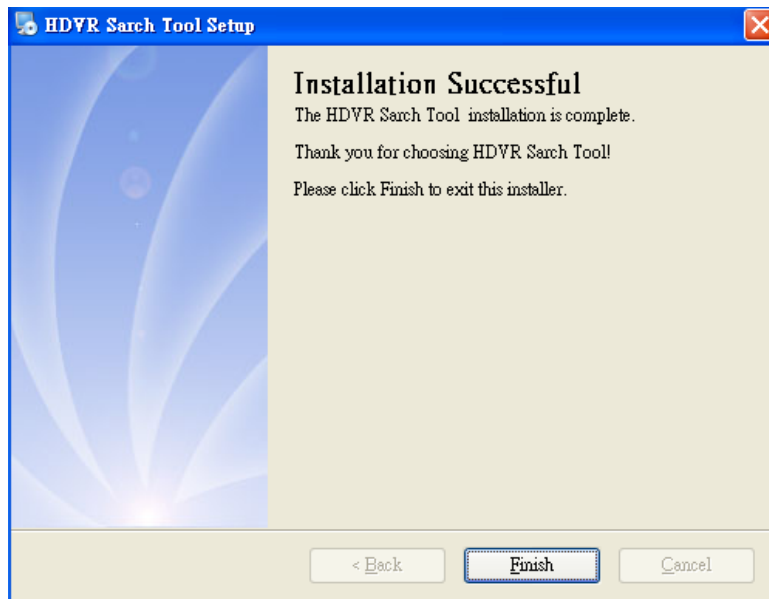
Please click “Next” to continue.



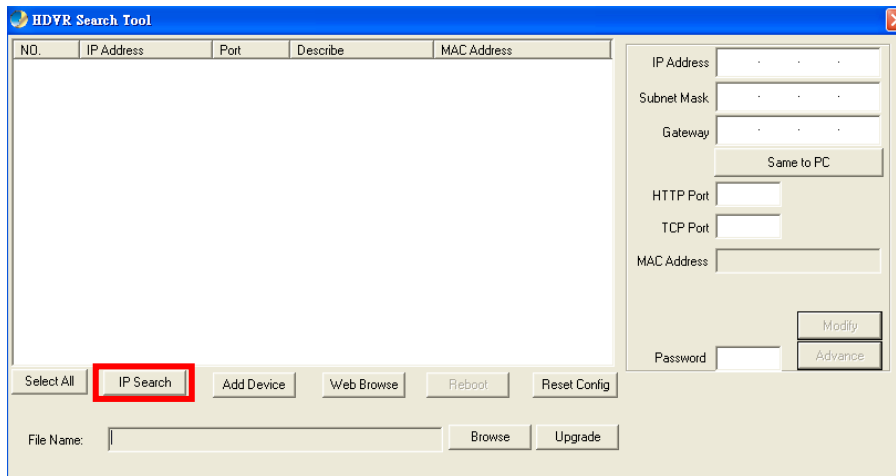
Please click “Next” to start the installation.



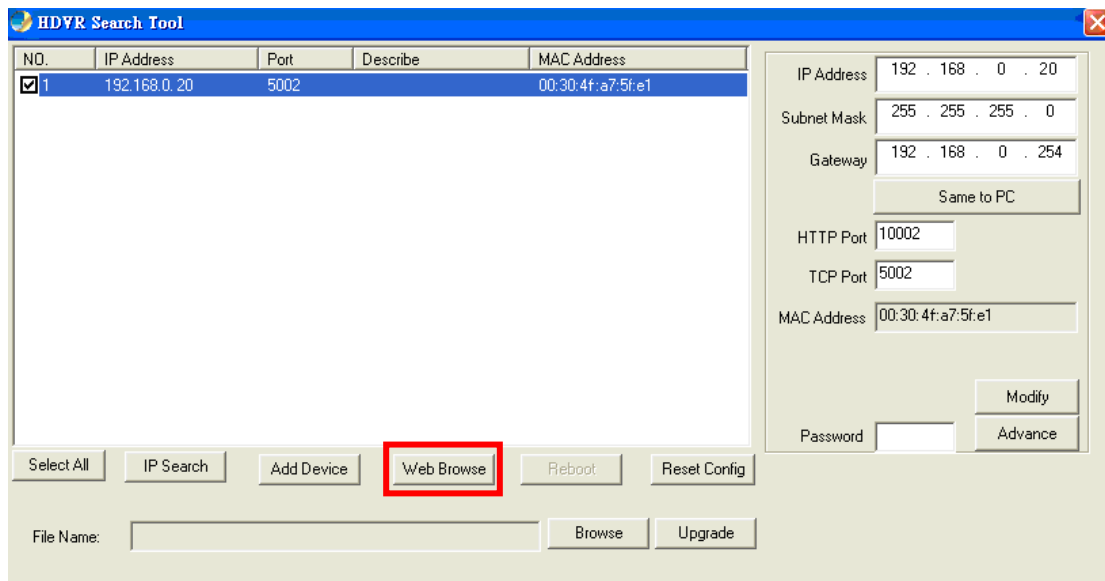
Once the installation is completed, please click “Finish”.



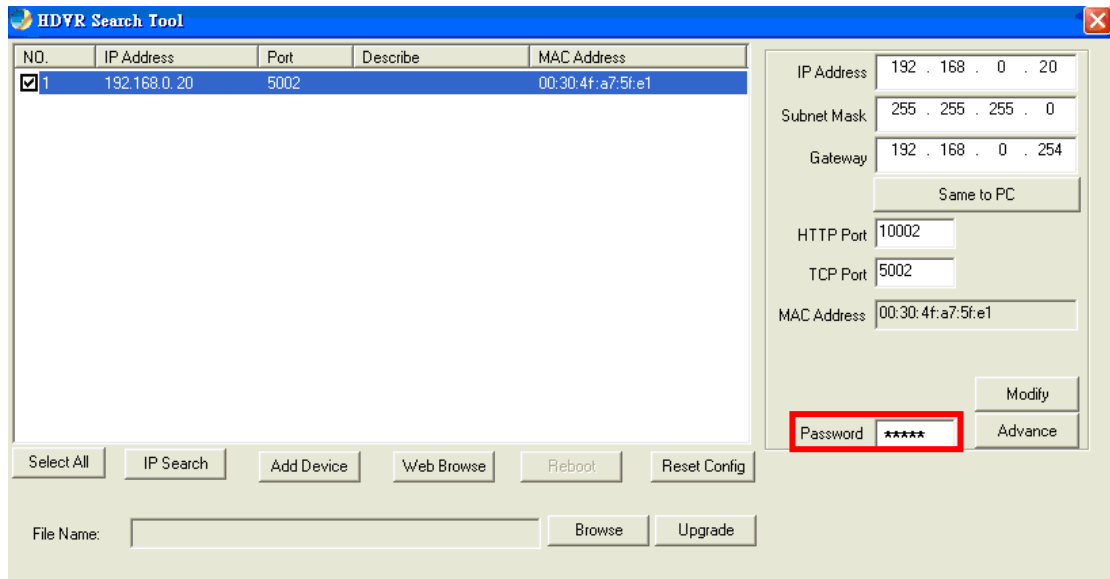
Please go to Start => Programs => HDVR Search Tool => HDVR Search Tool to run the search tool.



The HDVR should be located and its IP address should be displayed. Select the HDVR and click on "Web Browse"; the program should automatically access the HDVR's web administration page from your default browser.

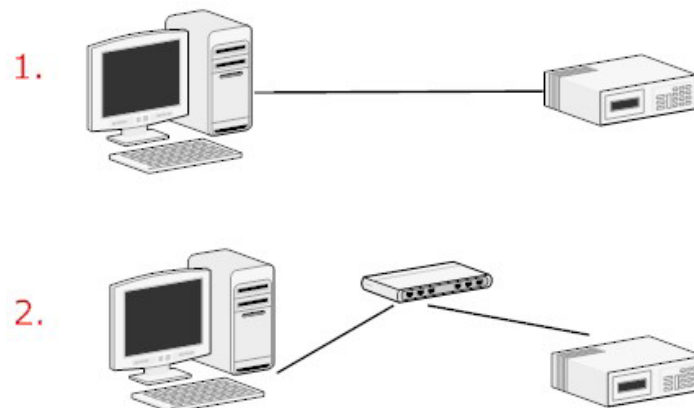


You will be prompted for the HDVR's login information before proceeding to modify device's IP address via search tool.

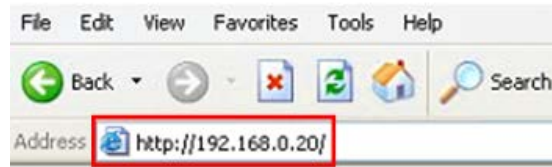


3.2 Accessing HDVR with its default IP address

The HDVR comes with a pre-configured static IP address “192.168.0.20”. However, it is only used when there is no DHCP server presented in the network. Connect the HDVR and PC to your switch or hub, or connect the PC directly to the HDVR using a crossover Cat5 Ethernet cable.



You can select utility or type the IP address to connect with HDVR directly. After the login, a window appears, prompting for the HDVR's username and password. Enter “**admin**” for both **default username** and **password**, and then click “OK” to enter the system.



Login page of local display



Login page of Web

Chapter 4. Basic Operation

This chapter provides setup instructions of the HDVR local display Interface.

4.1 Main/Live Viewing



The main/live view is the first interface displayed once you access the HDVR through local display. It displays the live video of all cameras added to the HDVR and the above patterns chosen by the user. The interface has many functions explained below.

4.2 Preview

You can right-click mouse to switch between the windows. The system date, time and channel name are shown in each viewing window. The surveillance video and alarm statuses are shown in each window.





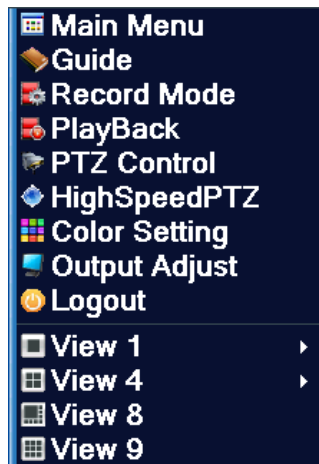
1		Recording status	3		Video loss
2		Motion detection	4		Camera lock

Table 4.1 Preview Icon

4.3 Desktop Shortcut Menu

In preview mode, you can right-click mouse to get a desktop shortcut menu as shown below. The menu includes **Main Menu**, **Guide**, **Record Mode**, **Playback**, **PTZ Control**, **High Speed PTZ**, **Color Setting**, **Output Adjust**, **Logout** and **View Mode shift**.



Picture 4.2 Shortcut Menu

4.3.1 Main Menu

The system main menu is shown below after login.




Picture 4.3 Main Menu

4.3.2 Playback

There are two methods for you to exceed playback.

1. In the desktop shortcut menu.
2. Main menu>Record->Playback

 Note	<p>The hard disk that saves the video files must be set as read-write or read-only state.</p>
---	---



Picture 4.4 Video Playback














Key	Function	Key	Function
	Play/Pause		Backward play
	Slow forward		Fast forward
	Previous frame		Next frame
	Previous file		Next file
	Round play		Full screen
	Stop		

Table 4.5 Playback Control Button


Operation tips: Show function of the key that cursor placed.

 Note	<p><i>Play frame by frame; the playback status should be paused first.</i></p>
---	--

Special functions:

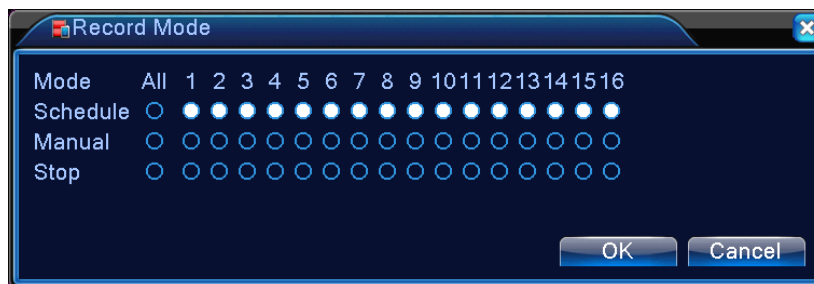
Accurate playback: Select time (h/m/s) in the time column and then click the play  button. The system can operate accurate playback according to searching time.

Local zoom: When the system is in the single-window, full-screen playback mode, you can drag your mouse on the screen to select a section and then left-click mouse to realize local zoom. You can right-click mouse to exit.

 Note	<p><i>When the current resolution of the channel is over the limit, the system will show a red "X" on the playback screen.</i></p>
--	--

4.3.3 Record

Please check the current channel status; "○" means it is not in the recording status, and "●" means it is in the recording status. You can use desktop shortcut menu or click [main menu]> [recording function]> [recording conf.] to enter the recording control interface.



Picture 4.6 Record Mode

Schedule	Record according to configuration.
Manual	Click the button to start recording of selected channel in any state.

Stop	Click the button to stop recording of selected channel in any state.
-------------	--

4.3.4 Alarm Output

Please check the current channel status; “○” means it is not in the alarming status, “●” means it is in the alarming status. You can use desktop shortcut menu or click [main menu]> [alarm function]> [alarm output] to enter the alarm output interface.



Picture 4.7 Alarm Output


Schedule	Alarm is on according to schedule.
Manual	Click the button to start alarming of selected channel in any state.
Stop	Click the button to stop alarming of selected channel in any state.

4.3.5 PTZ

PTZ control is a little different between analog mode and full digital mode.

- 1) **Digital channel** – the digital channel needs to link PTZ; the remote device should connect with PTZ with protocol correctly set also.
- 2) **Analog channel** – Only when the device is connecting with PTZ and configuring protocol correctly is OK.

Operation interface is shown below. The functions include PTZ direction control, speed, zoom, focus, iris, preset, tour, auto pan and so on.







Note

1. When Decoder A (B) line connects with DVR A (B) line, the connection is right.
2. Click [main menu] > [system configuration] > [PTZ setup] to set the PTZ parameters.
3. The PTZ functions are decided by the PTZ protocols.



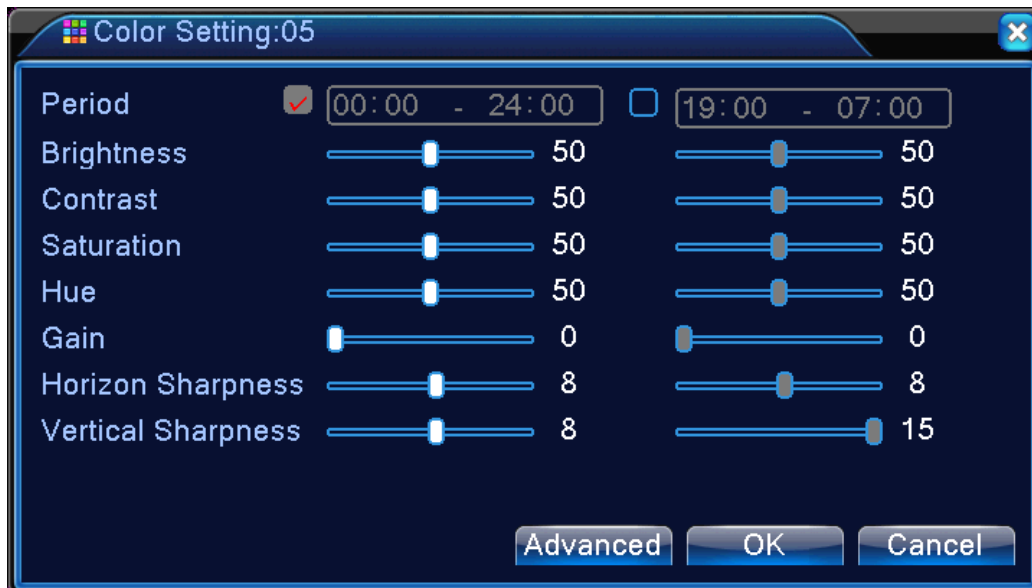
Picture 4.8 PTZ Setup

Speed	Set the PTZ rotation range. Default range: 1 ~ 8.
Zoom	Click the  /  button to adjust the focal length of the camera.
Preset	Click the  /  button to add or delete preset points.
Hide	The current interface will be temporarily hidden after clicking it.
Direction Control	Control the PTZ rotation. Control of 8 directions is supported. (4 directions on Front panel is supported)
High Speed PTZ	Full screen shows channel image. Left-click mouse to control PTZ's rotational orientation and to rotate to adjust the zoom.
Advanced	Enter the function of the operation menu, such as focus, iris, tour.

Page Switch	Switch between different pages.
--------------------	---------------------------------

4.3.6 Color Setting

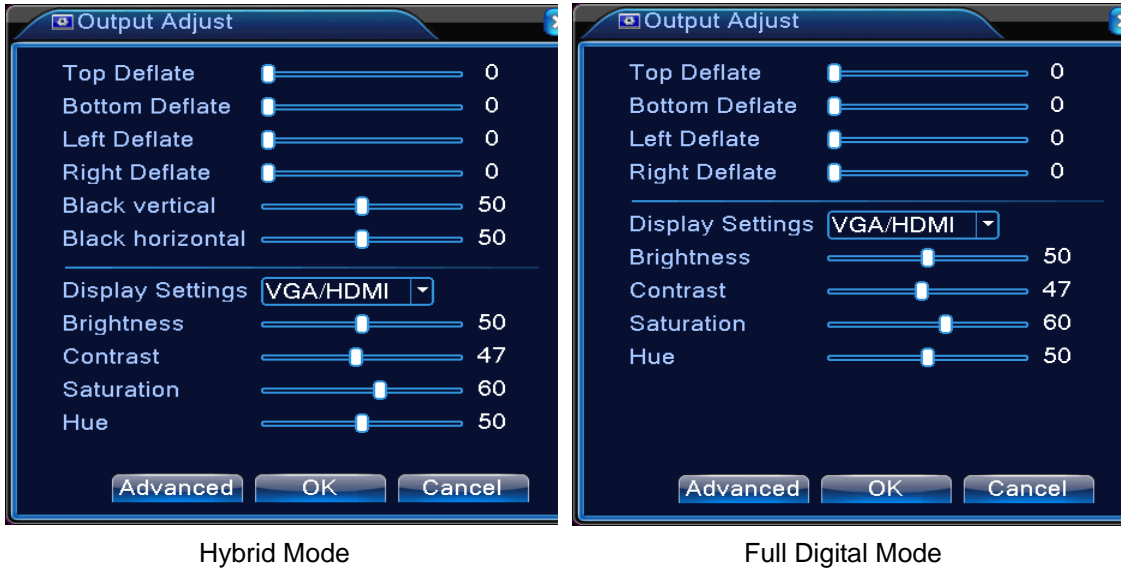
Color setting is only applied for hybrid (HVR)/full analog (DVR) mode and can be configured in analog channel. You can adjust the selective image parameters according to your requirement (current channel for single window display and cursor place for multi-window display). Through desktop shortcut menu, you are able to enter the interface. The image parameters include tonality, brightness, contrast and saturation. Besides, you can set different parameters at different time sections.




Picture 4.9 Color Setting

4.3.7 Output Adjust

In hybrid mode, the output adjust function supports black vertical and black horizontal adjustment; in full digital mode, the function does not support the adjustment below. The function allows you to adjust TV output area parameters. You can go to the setup interface via desktop shortcut menu or enter [main menu]> [management tools]> [Output adjust].



Picture 4.10 Output Adjust

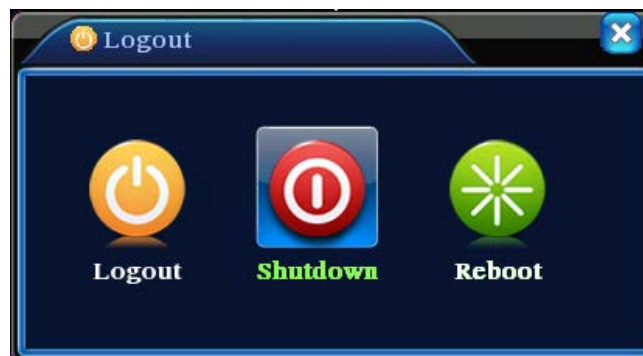


Note

The black vertical and horizontal lines at output adjust can affect analog channel in the hybrid mode.

4.3.8 Logout

In logout setup interface, it comes with logout, shutdown and reboot functions. You can use the desktop shortcut menu or enter [main menu].




Picture 4.11 Logout, Shutdown, Reboot

Logout	Press to log out; password is needed to re-enter.
Shutdown	Press to turn off the system after three seconds. Cancel midway is of no effect.
Reboot	Press to reboot the system.

4.3.9 Window Switch





Previewing in single window, four windows, eight windows, nine windows or sixteen windows is up to your choice.

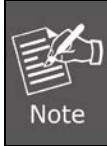
 Note	<i>Different video input numbers have different switchable previewed pictures.</i>
--	--

Chapter 5. Main Menu

5.1 Main Menu Navigation

Main Menu	Sub Menu	Function
Record	Config	Set the recording configuration, recording type and recording time section
	Playback	Set recording search, recording play and video file storage
	Backup	Detect backup device, format device, back up the selective files
Alarm	Motion detection	Set motion detection alarm for selected input channel. The related parameters include motion sensitivity, motion area, time section, alarm output, motion detection interval, message, post recording, mobile reporting, PTZ, patrol, buzz, email and FTP upload
	Video blind	Set camera mask for selected alarm channel. The related parameters include time period, alarm output, message, post recording, mobile reporting, PTZ, patrol, buzz, email and FTP upload
	Video loss	Set video loss alarm for selected input channel. The related parameters include time period, alarm output, message, post recording, mobile reporting, PTZ, patrol, buzz, email and FTP upload
	Alarm input	Set alarm for selected input channel. The related parameters include time period, motion detection interval, alarm output, message, post recording, mobile reporting, PTZ, patrol, buzz, email and FTP upload
	Alarm output	Support alarm modes like configuration, manual and stop
	Abnormality	System events include no storage, storage error, limited storage space, network disconnection and IP Conflict. Event action parameters: message, buzzer, mobile reporting and email.

Main Menu	Sub Menu	Function
System configuration	General configuration	Set system time, data format, language and hard disk in action when it is full and comes with machine number, video standard, auto logout, etc.
	Encode configuration	Set main (extra) coding parameters: code mode, resolving ability, frame rate, code stream control, image quality type, code stream value, and frame between value and video/audio. <div style="border: 1px solid black; padding: 5px; display: inline-block;">  <i>Only Hybrid mode and full analog mode have encode configuration.</i> </div>
	Network configuration	Set basic network parameters like DHCP, DNS and network high speed download (HS Download).
	NetService	Set other import functions like PPPOE, NTP, email, IP filter, DDNS, FTP, UPnP and RTSP.
	GUI display	Set channel name, time display, record status, alarm status, deflicking, transparency and resolution. <div style="border: 1px solid black; padding: 5px; display: inline-block;">  <i>Only analog channel can set channel name, region cover, time title, and channel title fold.</i> </div>
	PTZ configuration	Set channel, PTZ protocol, address, baud rate, data bit, stop bit and parity <div style="border: 1px solid black; padding: 5px; display: inline-block;">  <i>Analog/Hybrid mode shows PTZ configuration setting.</i> </div>
	RS485 device	Set protocol type, address, baud rate, data bit, stop bit and parity <div style="border: 1px solid black; padding: 5px; display: inline-block;">  <i>Full digital mode shows RS485 Device setting.</i> </div>
	Serial port configuration (RS232)	Set serial port function, baud rate, data bit, stop bit and parity
	Tour	Set patrol mode and interval time


Main Menu	Sub Menu	Function
	Digital	Set channel type, check channel status and configure the digital channel, etc.
Advanced	Hard disk management	Set appointed hard disk as read-write disk, read-only disc or redundant disk, format hard disk, resume date and so on
	User management	Modify user, group or password. Add user or group. Delete user or group.
	Online user	Break the connection of the existing login user. After breaking connection, the account is locked until booting up again.
	Output adjust	Adjust upside, downside, nearside, starboard distance, black vertical and horizontal parameters.  <i>Only analog channel has black vertical and horizontal margins.</i>
	Automatic maintenance	Settings for automatic reboot system and auto-delete old files.
	Restore	Factory default settings for general setup, encode setup, recording setup, alarm setup, network setup, network service, netservice, serial port setup and user management
	Upgrade	Upgrade firmware with external device (like USB)
	Device info	Device configuration and information
	Import/Export	Export the device's log or configuration to external device (like USB flash disk); input the configuration with external device (like USB flash disk).
System information	Hard disk information	Display hard disk capability and recording time
	BPS	Display code stream information
	Log information	Search and clear log information according to log types
	Version	Display firmware, MAC address information, etc.
Logout		Logout, shut down or reboot

5.2 Record

Operations related to record include Recording, Playback, Backup and Screen Shot (only for hybrid mode and full analog mode).

5.2.1 Record Configuration

Set the recording parameters in the surveillance channel. The system sets 24 hours consecutive recording in the first startup. You can enter [main menu]> [recording function]> [record configuration] to set.


 Note	<p><i>There is at least one read-write hard disk (refer to chapter 5.5.1).</i></p>
---	--



Picture 5.1 Record Configuration

Channel	Choose the corresponding channel number to set the channel. Choose the all option to set the entire channels.
Redundancy	Choose the redundancy function option to implement the file double backup function. Double backup is writing the video files in two hard disks. When you do the double backup, make sure that there are two hard disks installed. One is read-write disk and the other is redundant disk. (refer to 5.5.1)

Length	Set the time length of each video file. 60 minutes is default value.
Pre-record	Record 1-30 seconds before the action. (time length is decided by the code stream)
Record Mode	<p>Schedule: Record according to the set video type (common, detection and alarm) and time section.</p> <p>Manual: Click the button and the channel is recording no matter what state it is in.</p> <p>Stop: Click the stop button and the channel stops recording no matter what state it is in.</p>
Period	Set the time section of common recording, The recording will start only in the set range.
Record Type	Set recording type: regular, detection or alarm.
Regular	Perform the regular recording in the set time section. The video file type is "R".
Detect	Trigger the "motion detect", "camera mask" or "video loss" signal. When the above alarm is set as opening recording, the "detection recording" state is on. The video file type is "M".
Alarm	Trigger the external alarm signal in the set time section. When the above alarm is set as opening recording, the "detection recording" state is on. The video file type is "A".

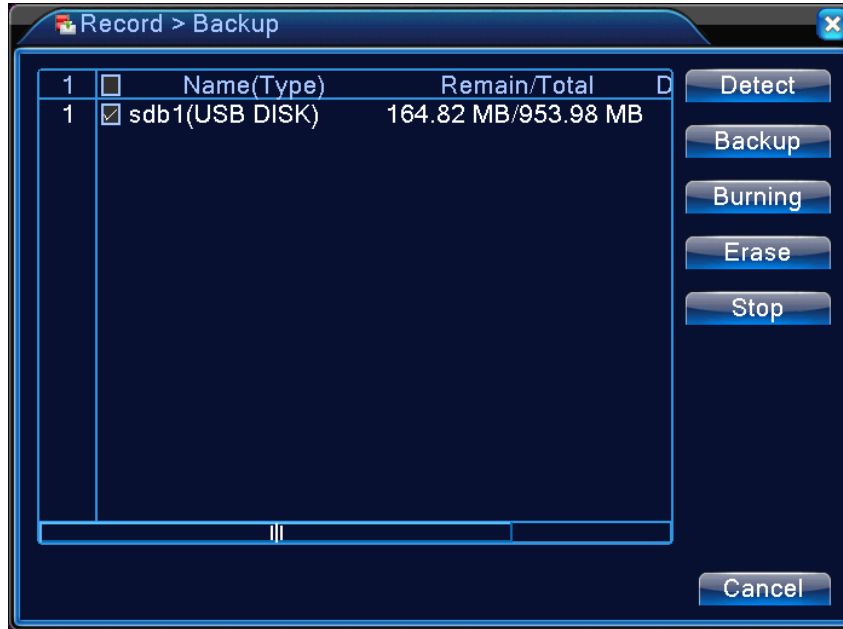
 Note	<i>Refer to chapter 5.3 to set corresponding alarm function.</i>
---	--

5.2.2 Playback

Refer to chapter 4.3.2.

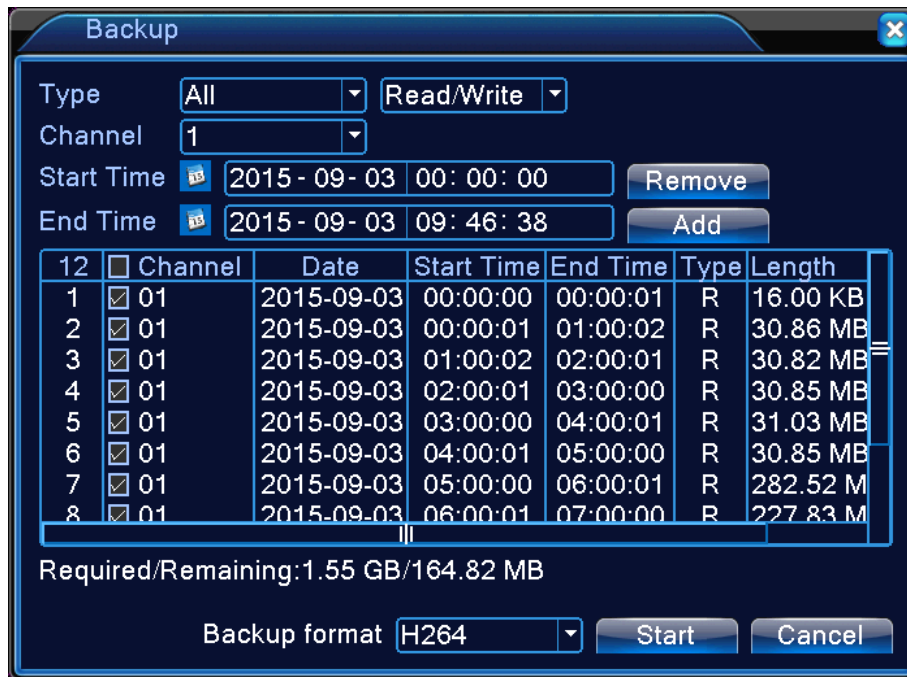
5.2.3 Backup

You can back up the video files to external storage through setup. The storage must be installed before the file backup. If the backup is finished, the video can be displayed individually.



Picture 5.2 Backup

Detect	Detect the storage connected with the DVR such as hard disk or universal disk.
Backup	Click the backup button and then the dialog box will pop-up. You can choose the backup file according to the type, channel and time.



Picture 5.3 Backup

Remove	Clear the file information.
Add	Show the file information satisfying the set file attributes.
Backup Format	Configure the backup file format based on requirement. H.246 or AVI format can be selected.
Start/Pause	Click the play button to start the backup and click the pause button to stop the backup.
Burning	The file will be burned synchronously after clicking it.
Erase	Choose the file to delete and click erasure to delete the file.
Stop	Stop the backup.

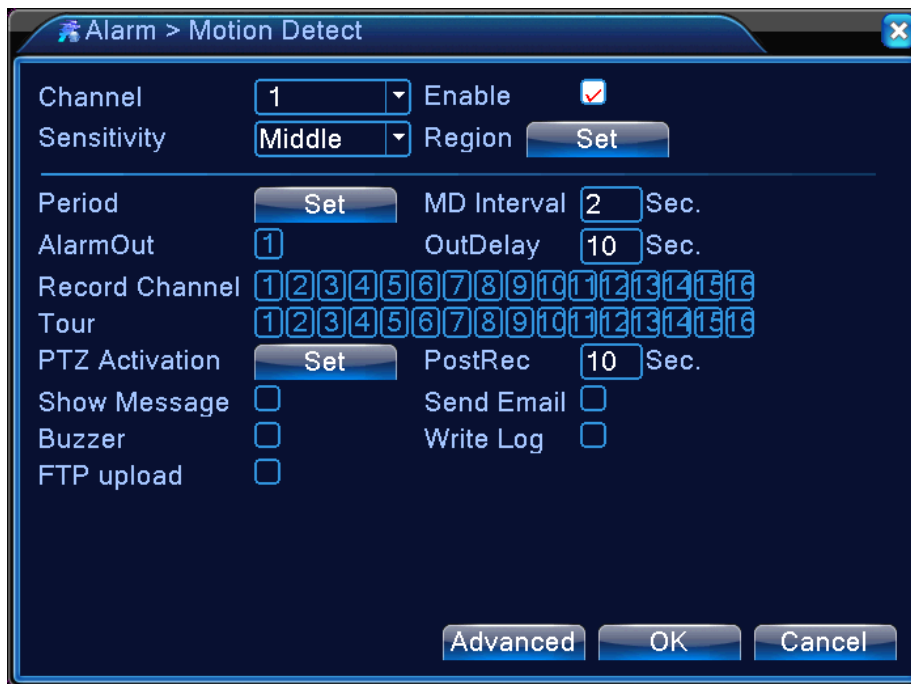
5.3 Alarm Function

Alarm function includes motion detection, video blind, video loss, alarm input, alarm output and abnormality.


5.3.1 Motion Detection


When system detects the motion signal that reaches the set sensitivity, the motion detection alarm is on and the linkage function is turned on. The details are shown below.

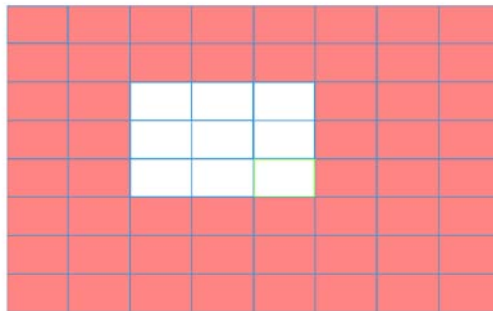
Digital channel: It not only enables motion detection function at the local side, but also enables the remote device that is connected. When remote device detects motion movement, the local side will start alarm recording, provided this function is not enabled.



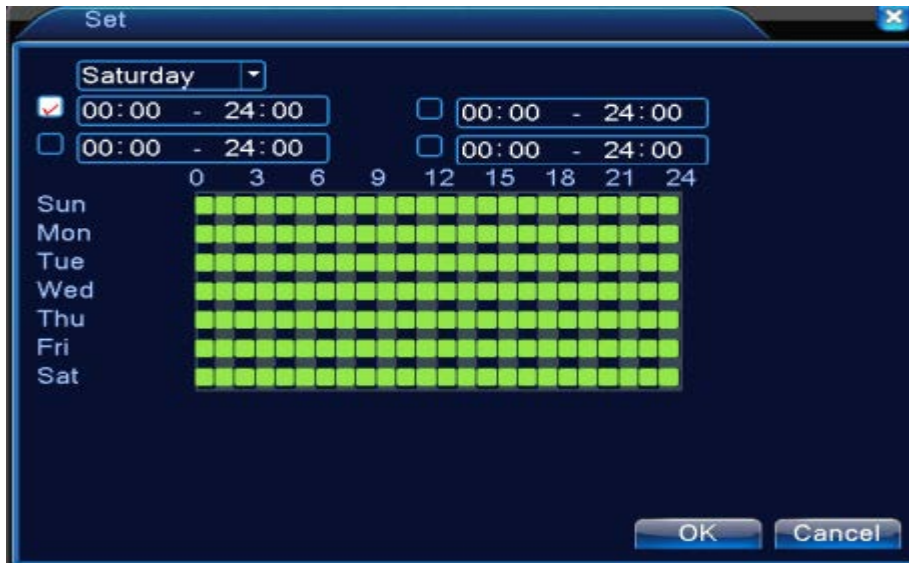
Picture 5.4 Motion Detection

Channel	Choose the set motion detection channel.
Enable	The motion detection function is on when the box is checked.
Sensitivity	Six options are provided in the sensitivity. <div style="border: 1px solid black; padding: 5px; display: inline-block;">  <i>Only the motion detection in hybrid mode/full analog mode has this function of setting sensitivity, and also only the analog channel can set region.</i> </div>
Region	Click the set button to enter the set area. The area is divided into PAL 22X18. Red block means the motion is being detected in the defensive area. White block means the unfenced area. You can set the area as follows: Drag the mouse and draw the

	<p>area. Default: all selected blocks are detection areas.</p> <div style="border: 1px solid black; padding: 5px;">  <p>Note <i>Only the motion detection in hybrid mode/full analog mode has this function of setting region, and also only the analog channel can set region.</i></p> </div>
Period	Trigger the motion detection signal in the time section. You can set by week or set uniformly. Each day is divided into four time sections.
MD Interval	Only one alarm signal is turned on even there are several motion detection signals in the set interval.
Alarm Output	Start the external equipment of corresponding linkage alarm when the motion detection alarm is turned on.
OutDelay	Delay a few moments and stop when the alarm state is turned off. The range is 10~300 seconds.
Record Channel	Choose the recording channel (multiple options supported). Trigger the video signal when the alarm is turned on.
Tour	It means that the selected channel is single window alternate patrol preview. The interval is set in the [Main Menu]>[System]>[Tour].




Picture 5.5 Region



Picture 5.6 Set the Time Section

PTZ Activation: Set the PTZ activation when the alarm is turned on.

In hybrid mode, PTZ links to the related PTZ information of analog channel. While in digital channel model, PTZ links to the related PTZ information on the remote device which is connected.

 Note	<p><i>To link PTZ, you can leave for [Shortcut menu]->[PTZ control] to set preset point, cruise between points and interval time, etc.</i></p>
---	---




Picture 5.7 PTZ Activation in Hybrid Mode


Delay: When alarm is over, the recording will last some seconds (10~300sec), and then stop.

Show message: Pop-up the dialog box of alarm information on the screen of the local host computer.

Send email: It means sending an email to user when the alarm is turned on.

 Note	<i>Set in the NetService interface and send email.</i>
---	--

FTP upload: When it is enabled, the video and picture of the related record channel and snapshot channel will be uploaded to an assigned position.

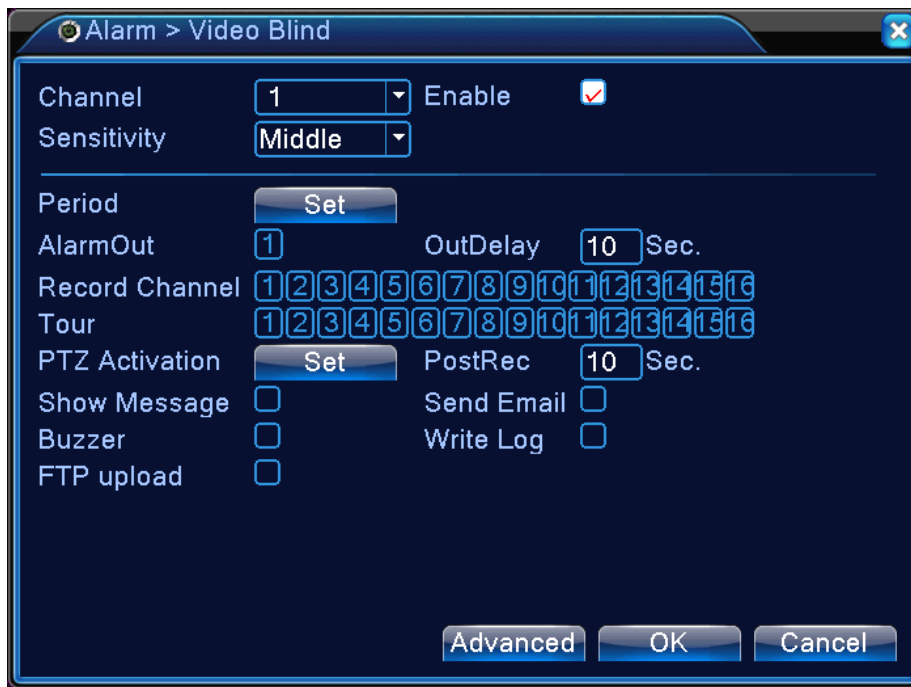
 Note	<i>FTP upload needs to be set at Netservice interface.</i>
---	--

Buzz: When alarm happens, the device will send out a buzz.

5.3.2 Video Blind

When the video image is influenced by the environment such as poor brightness or reaching the set sensitivity parameter, the camera mask function and the linkage function are turned on. The details are shown below.

Digital channel: It not only enables video blind function at the local side, but also enables the remote device that is connected. When the remote device is with video blind, the local side will start alarm recording, otherwise this function is not enabled.



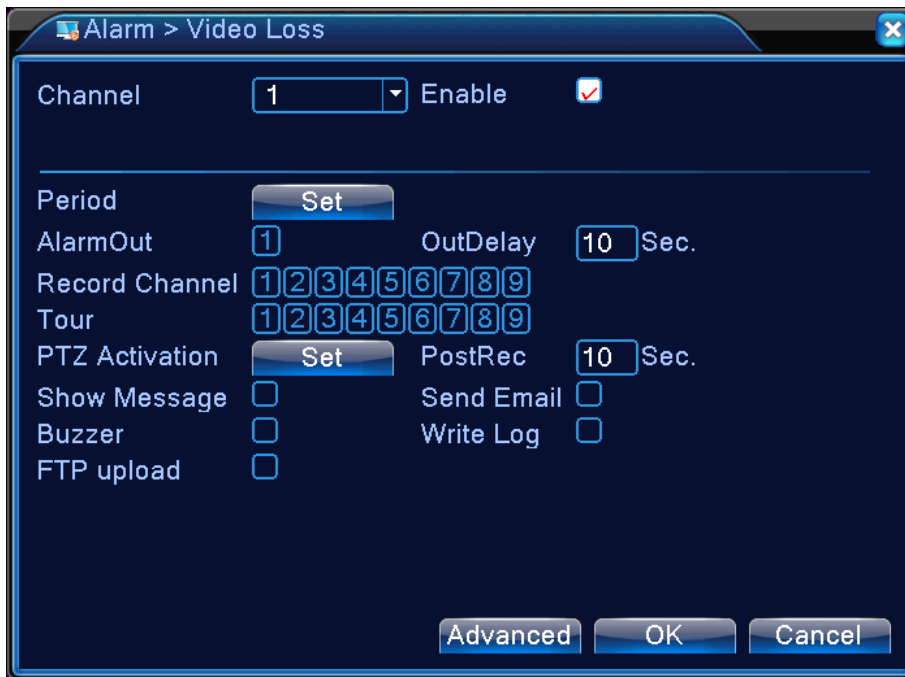
Picture 5.8 Video Blind

Set method: Refer to Motion Detection in Chapter 5.3.1.

5.3.3 Video Loss

When the equipment cannot obtain the channel video signal, the video loss alarm and the linkage function are turned on. The details are shown below.

Digital channel: It not only enables video loss function at the local side, but also enables the remote device that is connected. When remote device is with video loss, the local side will start alarm recording, otherwise this function is not enabled.



Picture 5.9 Video Loss

Set method: refer to Motion Detection in Chapter 5.3.1.

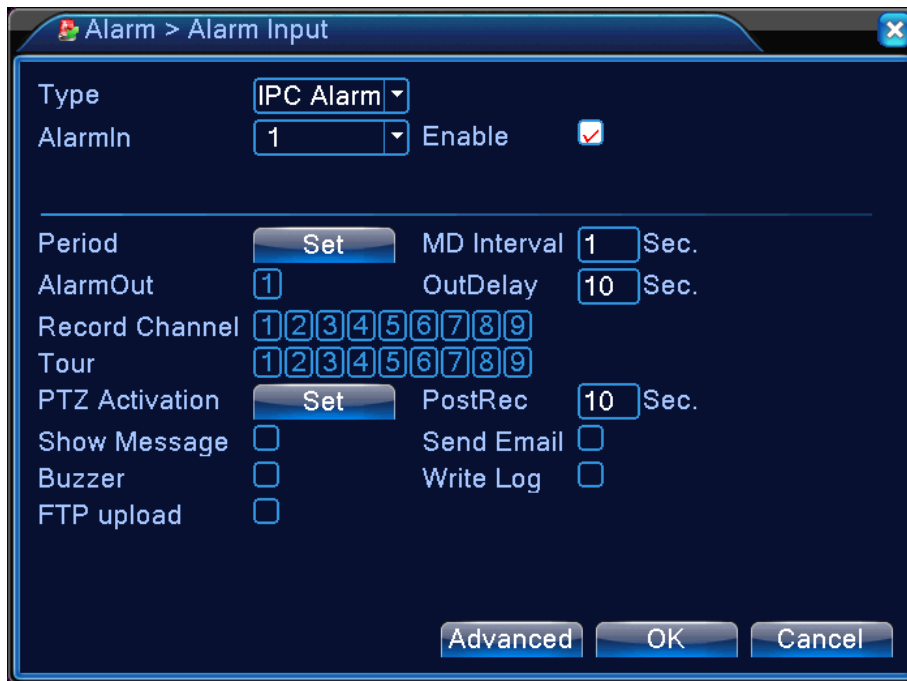
5.3.4 Alarm Input

When the equipment obtains the external alarm signal, the alarm function is turned on. Alarm input is the same between hybrid mode and full digital mode when the function is enabled. When it is set normal, it only needs to connect alarm sensor to alarm input port on the local side. When alarm information occurs, it will link to the related setting functions at the same time.



Note

The "Advanced" button is the same as right click.



Picture 5.10 Alarm Input

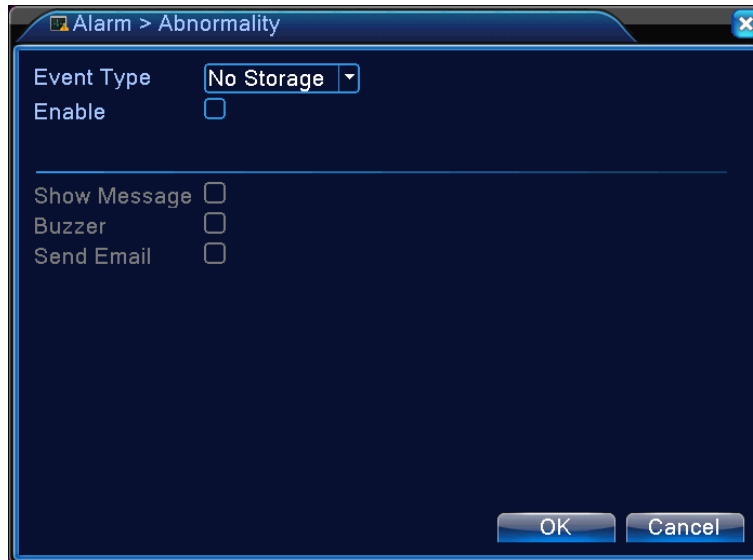
Set method: refer to Motion Detection in Chapter 5.3.1.

5.3.5 Alarm Output

Refer to Chapter 4.3.4.

5.3.6 Abnormality

Analyzing and inspecting the current software and hardware of the device. When some abnormal events happen, the device will take an action immediately, such as show message and buzzer.



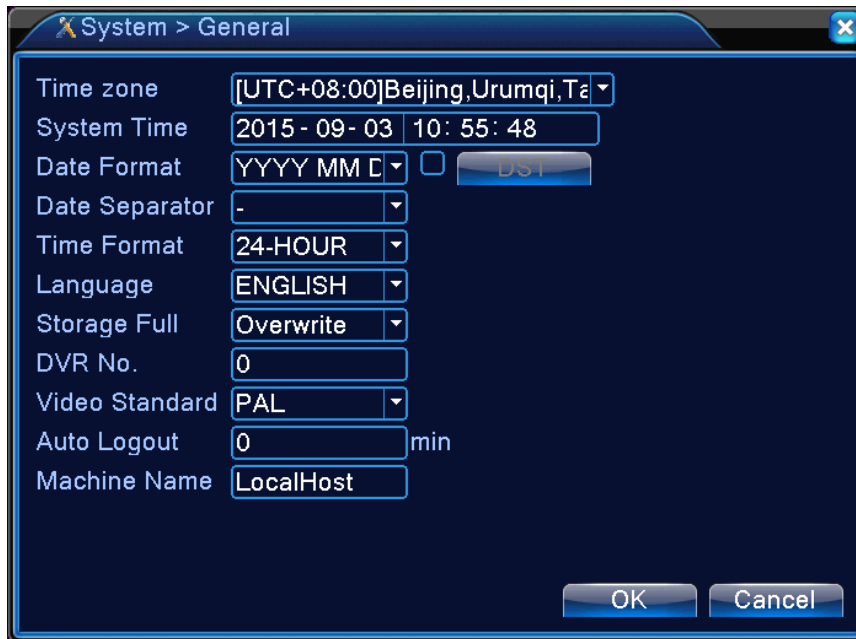
Picture 5.11 Abnormal

Event Type	Select abnormality you want to inspect.
Enable	Select it to make sure abnormal function workable
Show Message	Automatically alarm cue dialog box pops out of the main screen
Buzzer	Device will have one long “di” sound while alarm is happening
Send Email	System will send Email notification automatically according to pre-setting

5.4 System Setup

In system setting, the functions contain General, Encode, Network, Net service, GUI display, PTZ configure/RS485 device, RS232, Tour setup and digital.

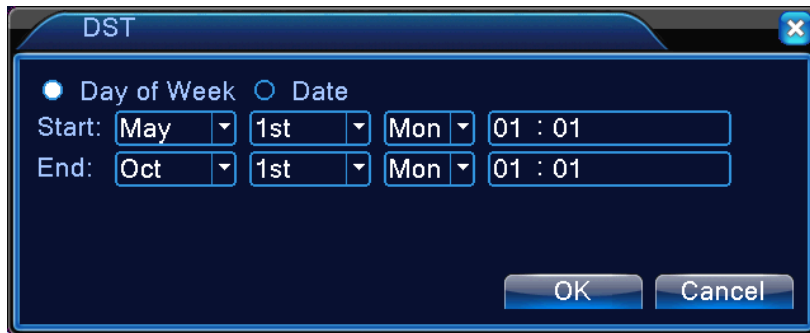
5.4.1 General



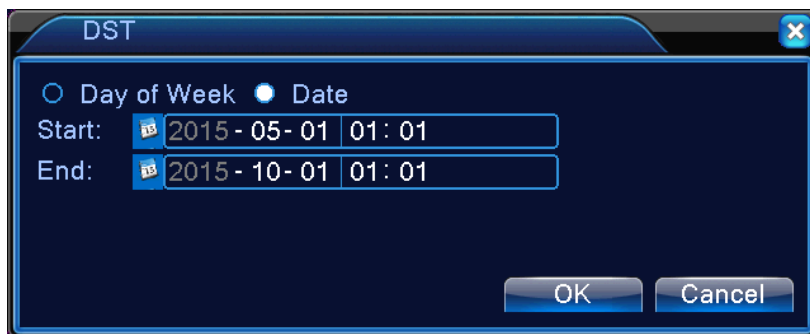
Picture 5.12 General Setup

Time Zone	Choose a correct time zone of location
System Time	Set the system date and time.
Date Format	Choose the date format: YMD, MDY, DMY.
Date Separator	Choose list separator of the date format.
Time Format	Choose time format: 24-hour or 12-hour.
Language	Support multiple languages up to 29. Arabic, Czech, English, Finnish, Greek, Indonesian, Italian, Japanese, Portuguese, Russian, Thai, T-Chinese, S-Chinese, Turkish, Brazilian, Bulgarian, Farsi, French, German, Hebrew, Hungarian, Polish, Romanian, Spanish, Swedish, Vietnamese.
HDD Full	Stop recording: Stop recording when the hard disk is full. Overwrite: Cover the earliest recording files and continue recording when the hard disk is full
DVR No.	Only when the address button in the remote controller and the corresponding DVR number are matched, the remote operation is valid.

Video Standard	PAL or NTSC.
Auto Logout	Set the latency time in 0-60. 0 means no latency time.
Machine Name	Can set the device's name.
DST	Choose the summer time option and pop out the dialog box as follows.



Picture 5.13 DST (Week)




Picture 5.14 DST (Date)

5.4.2 Encode Setup

HDVR provides encode setting in hybrid mode or full analog mode. The encode setting is for analog channel only.

Set the video/audio code parameter: video file, remote monitoring and so on. Set every main stream parameter in the left part, and set the extra stream parameter in the right part.



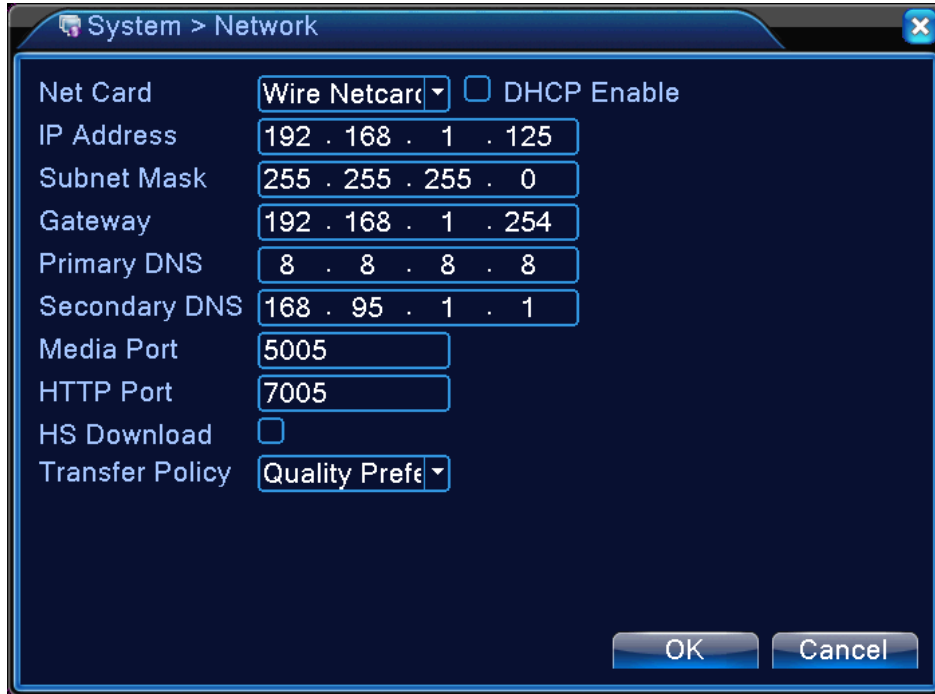
Extra stream introduces video compression technique which applies for multi-channel playback simultaneously, dial-up multi-channel real-time monitor under poor bandwidth, or mobile monitor, and so on.



Picture 5.15 Encode Setup

Channel	Choose the channel number.
Compression	Standard H.264 main profile.
Resolution	Resolution type: AHD-M(720p)/AHD-L(960H)/D1/CIF/QCIF.
Frame Rate	P:1 frame/s~25 frame/s; N: 1 frame/s~30 frame/s
Bit Rate Type	You can choose limited code stream or variable code stream. When you choose the variable code stream, there are six image quality options. Under the limited code stream, you can choose the code stream manually.
Bit Rate	Set the code stream value to modify the image quality. The larger code stream values the better image quality. AHD-M(1024~4096kbps)/AHD-L(896~4096kbps)/D1 (512~2560kbps)/CIF (30~489kbps) / QCIF(30~244kbps)
Frame Interval	Choose the range from 2 to 10s.
Video & Audio	When the icons are all in reverse display, the video file is video and audio multiplex stream.
Extra Stream Setting	Extra stream: It is used for client side monitoring and mobile monitoring. Channel title: Select channel title and then choose whether it needs to enable video and audio. The resolution, frame rate and bit rate type settings are the same as main stream.

5.4.3 Network Setup



Picture 5.16 Network Setup

Net Card	You can choose cable network card or wireless network card.
DHCP Enable	Obtain IP address automatically.
IP Address	Set the IP address. Default: 192.168.0.20.
Subnet Mask	Set the subnet mask code.
Gateway	Set the default gateway.
DNS Setup	Domain Name Server. It translates the domain name into IP address. The IP address is offered by network provider. The address must be set and reboot to enable to work.
Media Port	Default: 34567.

HTTP Port	Default: 80.
HS Download	Network high-speed download
Transfer Policy	There are three strategies: self-adaption, image quality precedence and fluency precedence. The code stream will adjust according to the setup. Self-adaption is the tradeoff between the image quality precedence and fluency precedence. Fluency precedence and self-adaption are valid only when the assistant code stream is turned on. Otherwise, image quality precedence is valid.

5.4.4 NetService

Choose the network service option and click the set button to configure the advanced network functions or double-click the service button to configure the parameters.



Picture 5.17 Net Service Setup

PPPoE Setup



Picture 5.18 PPPoE Setup

Input the user name and password that ISP (Internet service provider) provides. After saving it, reboot your system. Then the DVR will build a network connection based on PPPoE. The IP address will change to dynamic IP address after the above operation is well done.

Operation: The current IP address is displayed after successful dial-up. Use this IP address to visit the DVR through user port.

NTP Setup

The NTP server must be installed in the PC.



Picture 5.19 NTP Setup

Server IP	Input the IP address installed on NTP server.
Port	Default: 123. You can set the port according to NTP server.

Update Period	The same with the NTP server check interval. Default: 10 minutes.
----------------------	---

Email Setup

If the alarm is turned on or the alarm linkage photos are taken, send an email about the alarm information and the photos to appointed address.



Picture 5.20 Email Setup


SMTP Server	Email server address. It could be an IP address or domain name. Domain name can be translated only it is the correct DNS configuration.
Port	Email server port number.
SSL	Decide whether using Secure Socket Layer protocol to login.
User Name	Apply the email server user name.
Password	Input the password corresponding to the user.
Sender	Set the email sender address.

Receiver	Send the email to appointed receivers when the alarm is turned on. You can set three receivers at most.
Title	You can set a message as you want (e.g. Alarm Message).

IP Filter Setup

When choosing the white list, only the listed IP address can connect the DVR. The 64 IP addresses are supportive in the list. When choosing the black list, the listed IP address cannot connect the DVR. The 64 IP addresses are supportive in the list.

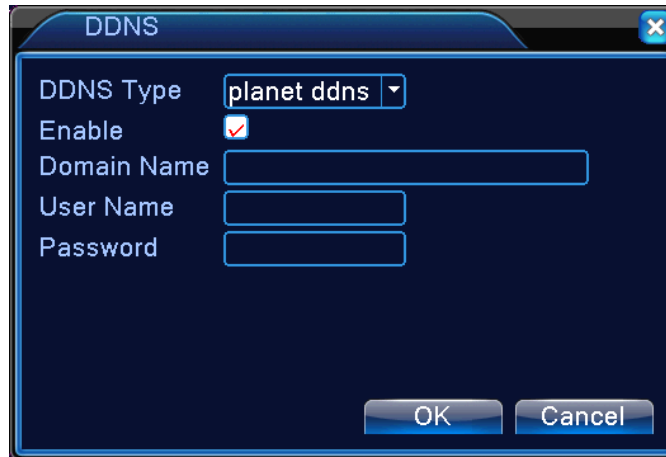
You can delete the set IP address by \surd in the options.

 Note	<p><i>When the same IP address is in the white and black list at the same time, the black list precedence is higher.</i></p>
---	--



Picture 5.21 IP Filter Setup

DDNS



Picture 5.22 DDNS Setup

It is the abbreviation of dynamic domain name server.

DDNS Type	DDNS service providers; PLANET DDNS is free to register.
Domain Name	Provide the domain name registered by DDNS. For example, hdvr1630test.planetddns.com
User Name	Provide the account registered by DDNS.
Password	Provide the password registered by DDNS. When the DDNS is successfully configured and starts, you can connect the domain name in the IE address column to visit.

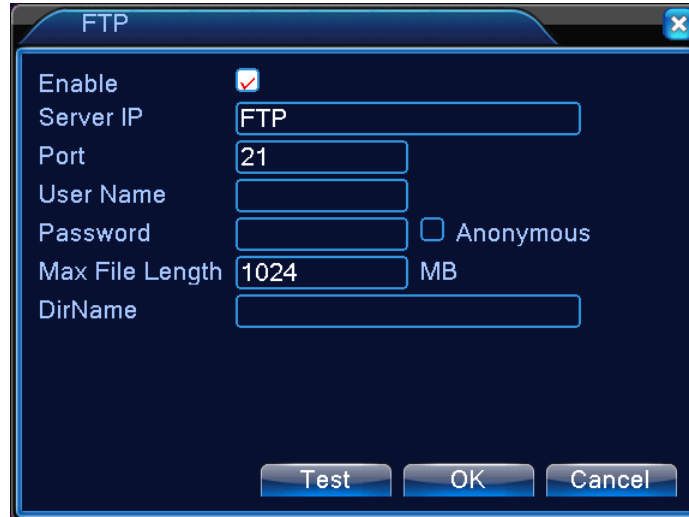


Note

The DNS setup must be configured correctly in the network setup.


FTP Setup

FTP is available only when alarm happens or alarm activates record and snapshot. It will upload related record and snapshot pictures to FTP server.



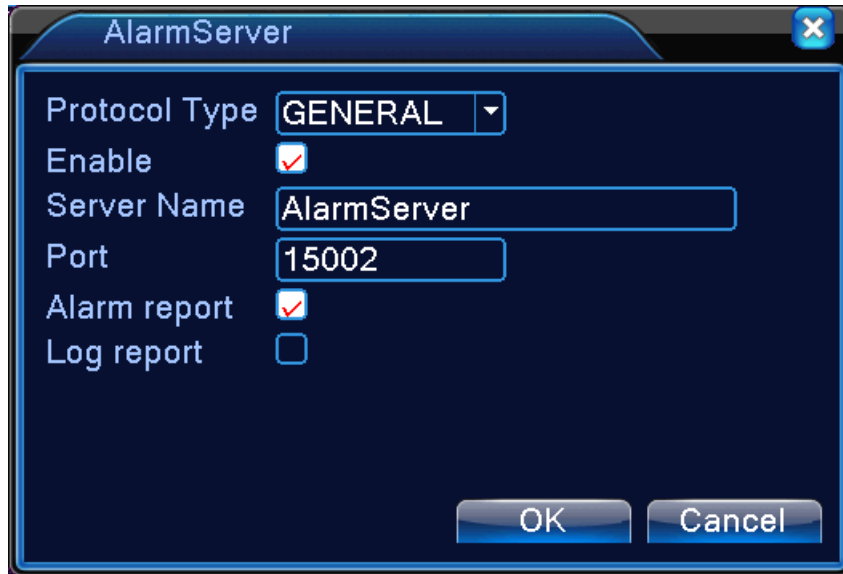
Picture 5.23 FTP Setup

Server IP	IP address of FTP server
Port	Port number of FTP server. The default value is 21
User Name	User name of FTP server
Password	Password of FTP server
Anonymous	When anonymous is enabled, setting user name and password is not required
Max. File Length	Max. length for uploaded files at every packed, default value is 1024M
Dir Name	The directory of uploaded files

 Note	<p><i>The user should have authority to upload files.</i></p>
--	---

Alarm Server

When alarm occurs, the system will transmit alarm information to alarm server.

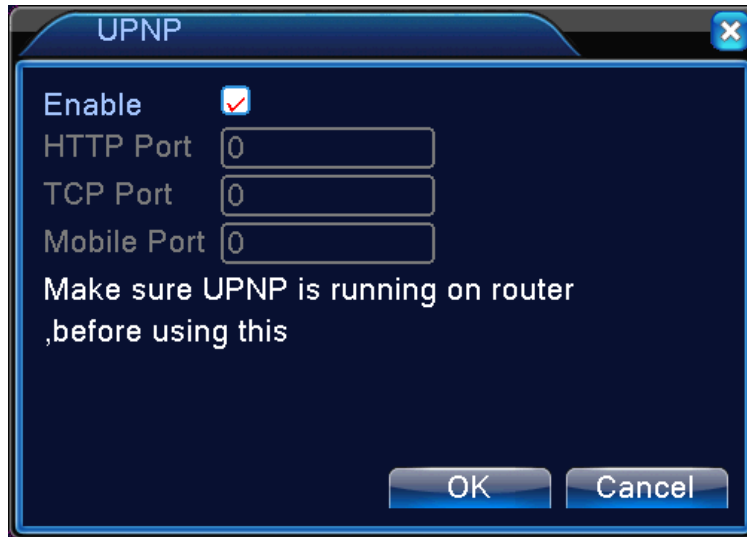


Picture 5.24 Alarm Server Setup

Protocol Type	Choose "General"
Enable	It means the function is activated when the box is checked
Server IP	IP address of alarm server
Port	Port number of device, related DDNS server listen port
Alarm Report	When the function is enabled, it will report alarm information to server.
Log Report	When the function is enabled, it will report log to server.

UPNP

UPNP protocol is to realize auto port forwarding on router, precondition of using this function is to make sure the UPNP function of router is enabled.

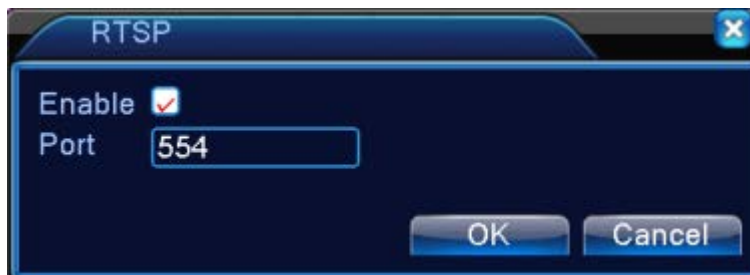


Picture 5.25 UPnP Setup

Enable	It means the function is activated when the box is checked.
HTTP Port	Router will automatically distribute HTTP port for the device. The port is needed when live view is made via Web.
TCP Port	Router will automatically distribute TCP port for the device. The port is needed when live view is made via CMS.

RTSP

The setting is for live view via browsers (Safari, Firefox, and Chrome) and VLC software. This function is only for live view and it cannot control the device.



Picture 5.26 RTSP Setup

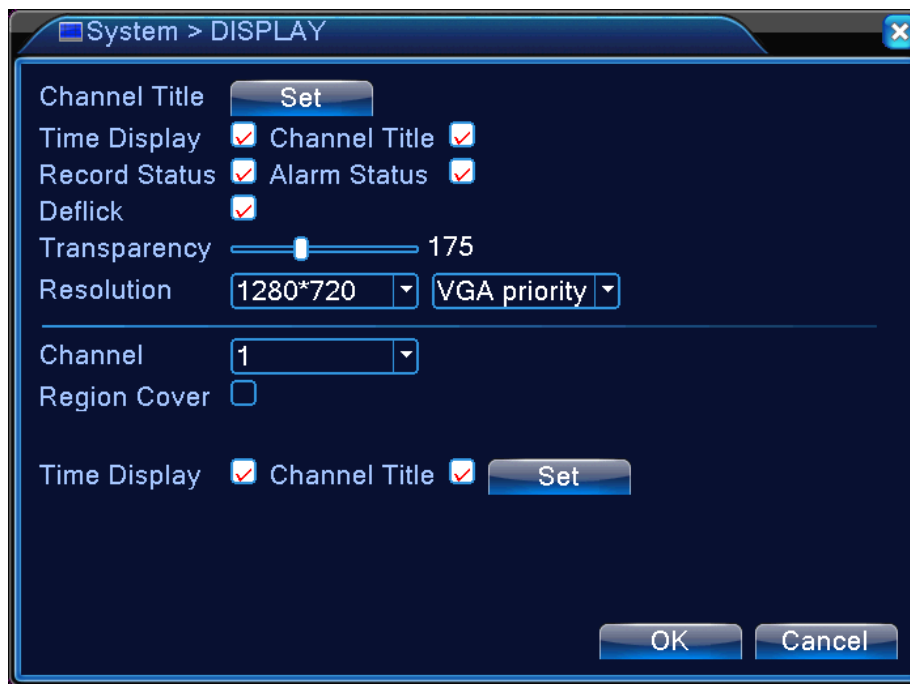
Enable	It means the function is activated when the box is checked.
Port	The default port number is 554.

5.4.5 GUI Display

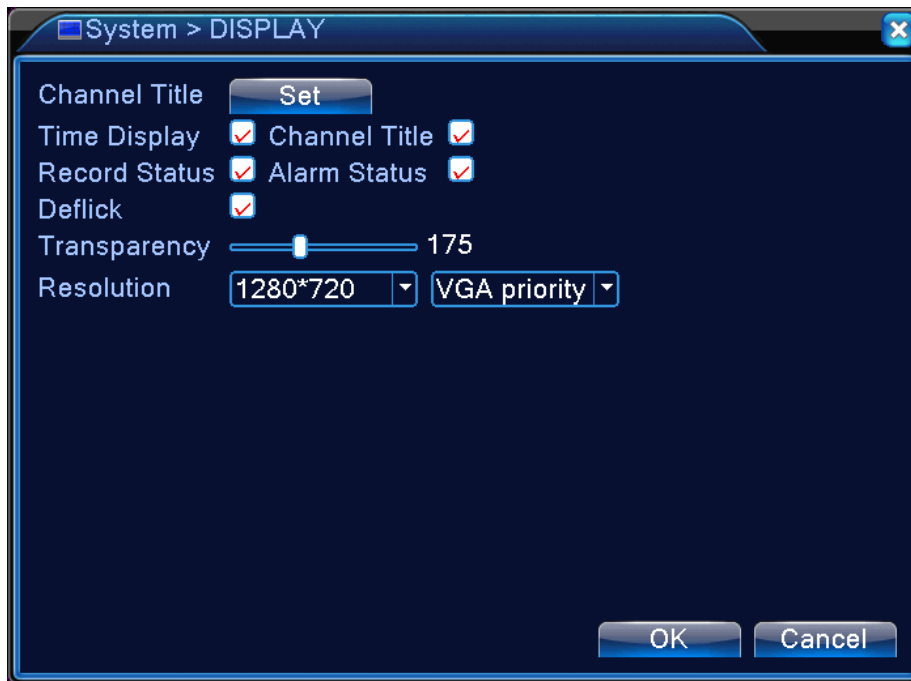
Configure the video output parameters including the front output mode and encode output mode.

Front output: In the local preview mode, it includes channel title, time display, channel display, record status, alarm status, transparency and region cover information.

Encode output: In the network surveillance and video file mode, it includes channel title, time display, channel display, record status, alarm status, transparency and region cover information.



The GUI Display Page in Hybrid (HVR) Mode and All Analog (DVR) Mode




The GUI Display Page in Full Digital (NVR) Channel Output Mode

Picture 5.27 Output Mode

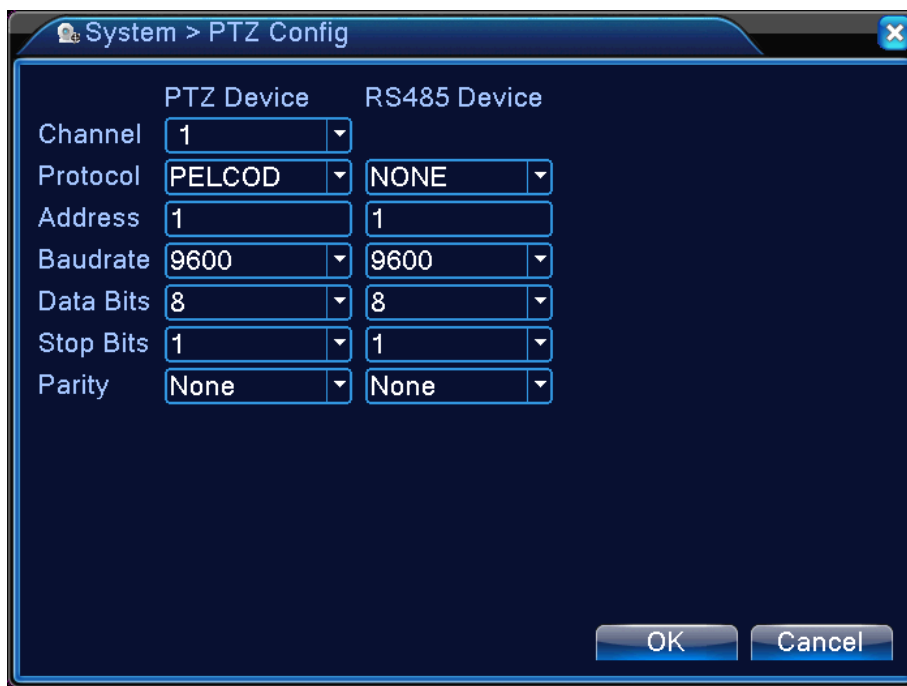
Channel Title	Click the channel name modify button and enter the channel name menu. The 16 Chinese characters and 25 letters are supported.
Time Display	Display the system data and time in the surveillance window.
Channel Display	Display the system channel number in the surveillance window.
Record Status	Display the system recording status in the surveillance window.
Alarm Status	Display the system alarm status in the surveillance window.
Transparency	Choose the background image transparency. The range is 128~255.
Resolution	Set display resolution.
Channel	Choose the set code output channel number.

Region Cover	Click the cover area button and enter the corresponding channel window. You can cover the arbitrary using mouse. (Black region is for output)
Time Display and Channel Display	Set the display position of channel title and time title.

 Note	<p><i>The channel number, region cover, time title and channel title settings exist in output mode only when the device is in hybrid (HVR) mode or full analog (DVR) mode.</i></p>
--	--


5.4.6 PTZ/RS485 Device

When system is in hybrid mode or full analog mode, PTZ device and RS485 device are listed on the PTZ configure page.

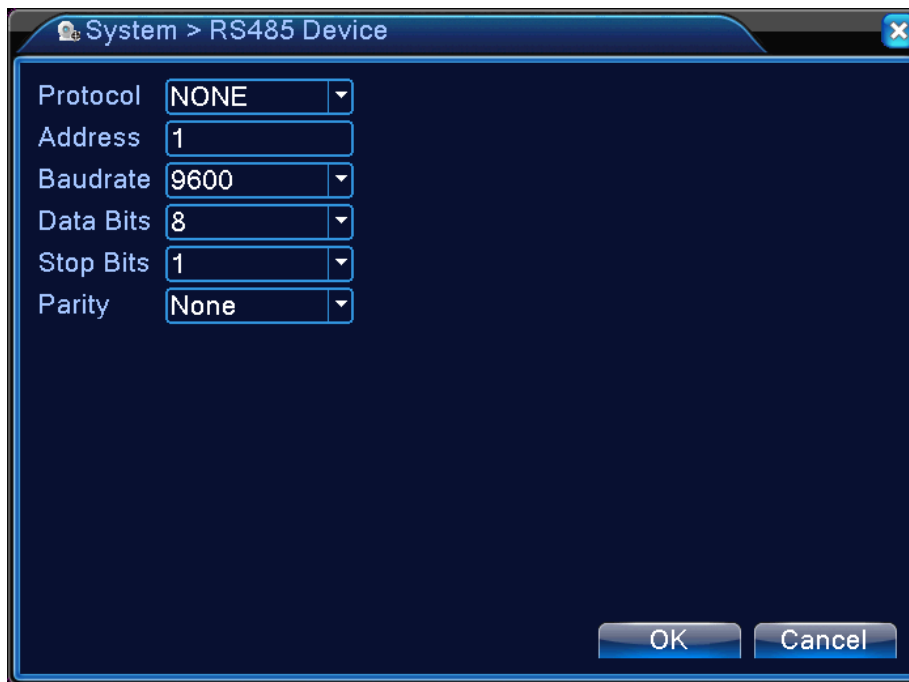


Picture 5.28 PTZ Configuration

Channel	Choose input channel of dome camera.
Protocol	Choose the corresponding dome protocol. (PELCOD as an example)

Address	Set as the corresponding dome address. Default: 1.  <i>The address must be consistent with the dome address</i>
Baud Rate	Choose the corresponding dome baud rate length. You can control the PTZ and vidicon. Default: 9600.
Data bits	Include 5-8 options. Default: 8.
Stop Bits	Include 2 options. Default: 1.
Parity	Include odd check, even check, mark check, space check. Default: none.


When in full digital mode, only RS485 device is shown below.



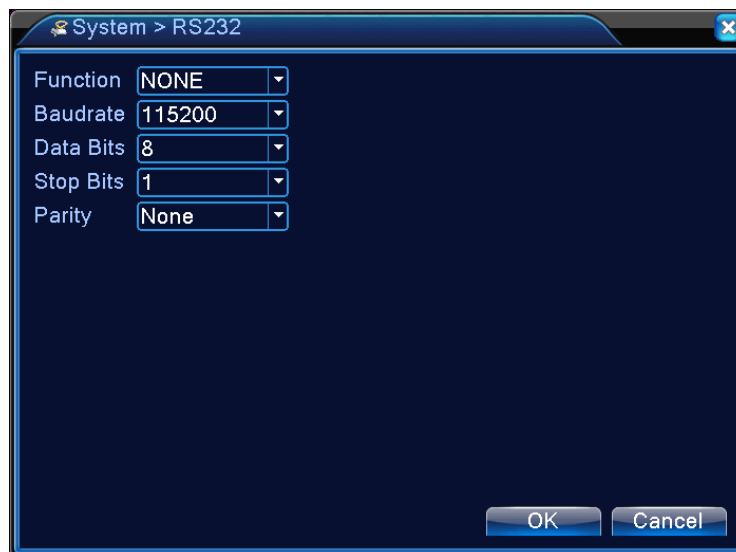
Picture 5.29 RS485 Device

Protocol	Choose related protocol of brand model (e.g. Vista)
Address	Set with corresponding address, default is 1

Baud Rate	Choose baud rate that related device uses; default is 9600
Data Bits	Include 5-8 options, default is 8
Stop Bits	Include 2 options, default is 1
Parity	Include odd check, even check, mark check, space check Default: none

 Note	<p><i>When analog channel exists, PTZ and RS485 will be shown in PTZ setting. If device is in digital (NVR) mode, it will show RS485 only.</i></p>
---	--

5.4.7 RS232



Picture 5.30 Serial Port Setting

Function	Common serial port is used to debug and update program or set up specific serial port.
Baud Rate	Choose the corresponding baud rate length.
Data Bits	Include 5-8 options.

Stop Bits	Include 2 options.
Parity	Include odd, even, mark, space, default is none.






5.4.8 Tour

Set the patrol display. The tour mode is enabled when box is checked. You can choose the single-view, four-view or nine-view of single mode tour or hybrid mode tour.




Picture 5.31 Tour Configure

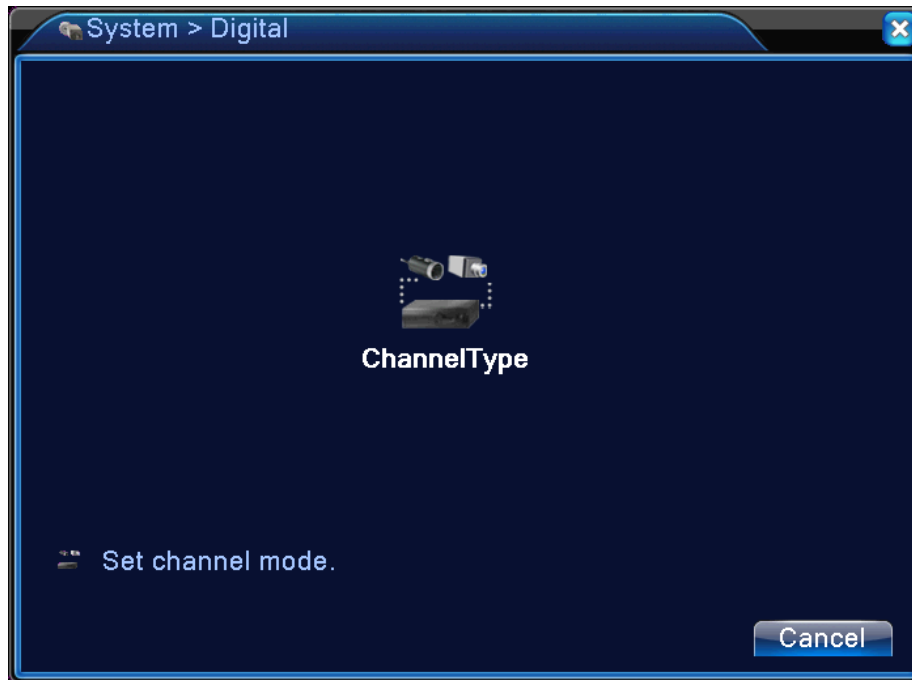
MD Interval	Set the patrol switch interval. The set range is 5-120 seconds.
Alarm Tour	Set the interval to shift alarm tour; range is 5-120 seconds. Choose return when alarm ends. When alarm is linking to tour, the system will auto shift to nine-view after alarm is finished.

 Note	<p>In preview mode, click upper right icon  /  to turn on / off tour. ( indicates turn on and  indicates turn off)</p>
---	---

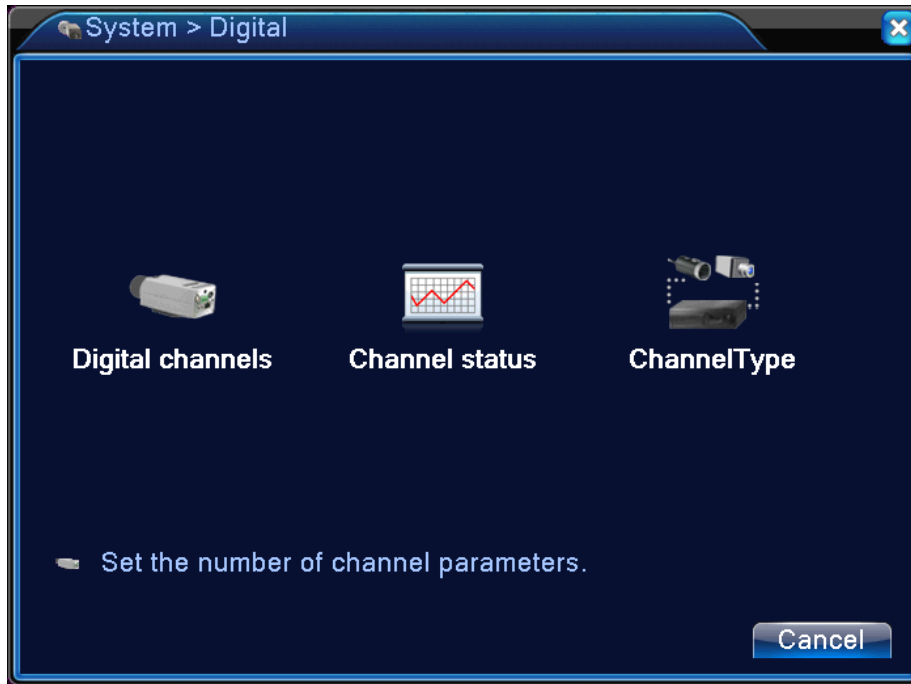
5.4.9 Channel Management

Digital management includes digital channel, channel status and channel type.

 Note	<p><i>There is only analog mode if device is in full analog mode</i></p>
---	--



Channel Manage Page in All Analog (DVR) Mode



Channel Manage Page in Hybrid (HVR) Mode/Full Digital (NVR) Mode

Picture 5.32 Channel Manage Interface

Digital Channel:

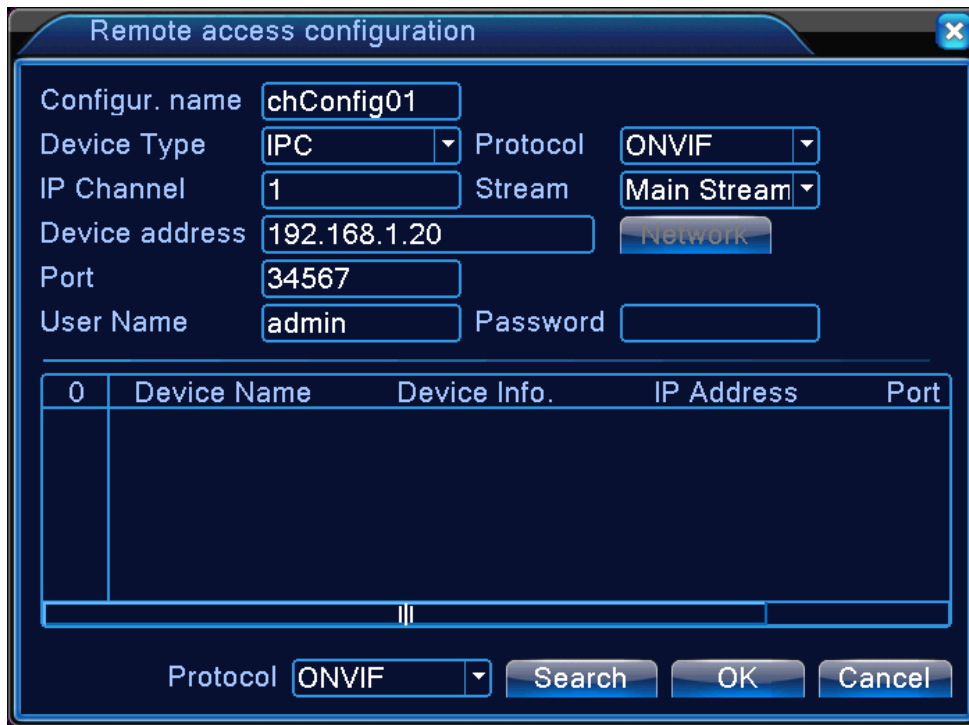


Single Link Page of Digital Channel



Multi-link Page of Digital Channel
Picture 5.33 Digital Channel Interface

Channel	Select channel title
Enable	When the digital channel is enabled, user is able to configure related settings for the channel.
Time Synchronization	When the function is enabled, the time of channel will be the same as the device.
Connection Mode	Can be singly connected or in multi-link mode. In multi-link mode, it can connect to several devices, and the device will be displayed one by one. Tour interval can be set no less than 10s.
Delete	If you want to remove the device, you can select specific device and click the delete button.
Add	Click the add button to add new device.

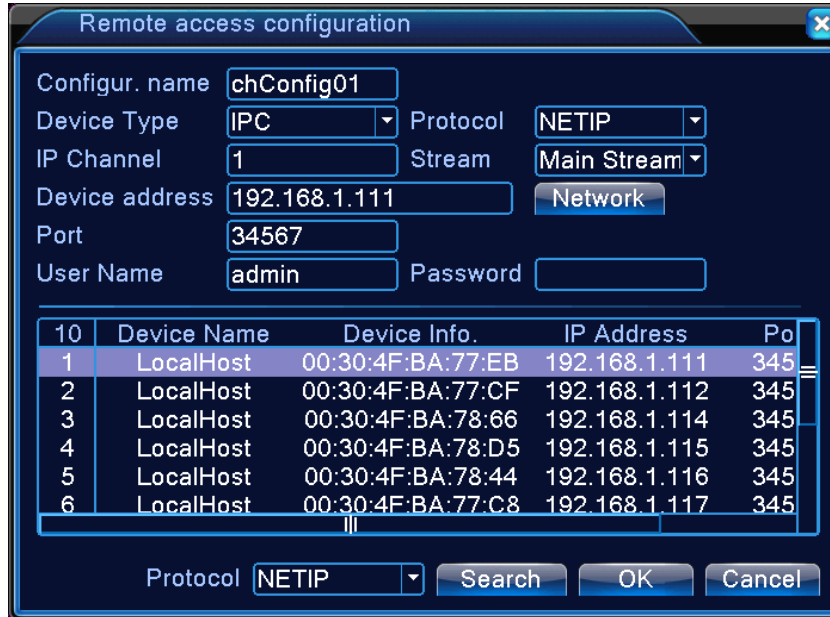


Picture 5.34 Remote Channel Configuration

Configure Name	Default configuration title of the device. User can modify it if necessary.
Device Type	The three types are IPC, DVR and HVR. User can choose whatever you like; default is IPC
Protocol	Default is NETIP
Remote Channel	User can input remote channel title from the device that you want to connect remotely
Stream	Default is main stream and do not support extra-stream at present
Device Address	IP address of device.
Port	Default is 34567
User Name	Default is admin

After clicking the Search button, the list will show all the devices in the network. User can

choose any device that you prefer.



Picture 5.35 Device Searched List

Channel Status:

Channel status is to show the status of all digital channels which are connected. The status information includes Channel, Stream, Mainstream/Sub-stream and Connection Status.

For example, the channel status for 8+8 mode is shown below.




When a channel is added to device but it is not enabled, you will see as shown below.

Channel	Stream	Mainstream/Sub-Stream	Connection Sta
D09	720P	720P	Connected
D10	720P	720P	Connected
D11	720P	Unknown	NoConfig
D12	720P	Unknown	NoConfig
D13	720P	Unknown	NoConfig
D14	720P	Unknown	NoConfig
D15	720P	Unknown	NoConfig
D16	720P	Unknown	NoConfig

Channel status interface is in full digital mode; the first channel with 5MP resolution is disconnected because of resolution limitation (1080p x 4-ch).


Channel	Stream	Mainstream/Sub-Stream	Connection Sta
D01	1080P	Unknown	Not connecte
D02	1080P	720P	Connected
D03	1080P	1080P	Connected
D04	1080P	960P	Connected

 **Note**

When the current resolution is over the max resolution that the channel supports, then a red "X" will be shown on the preview image. For example, in full digital channel mode, the maximum resolution of channel is 720p. If the HDVR connects to a camera with resolution over 720p (such as 1080p), you will see the picture shown below.

Channel Type:



 **Note**

In this series of product, the HDVR provides full analog channel mode, hybrid mode and full digital mode in channel type. Different models have different channel modes. User can shift the mode freely if necessary.


5.5 Advanced

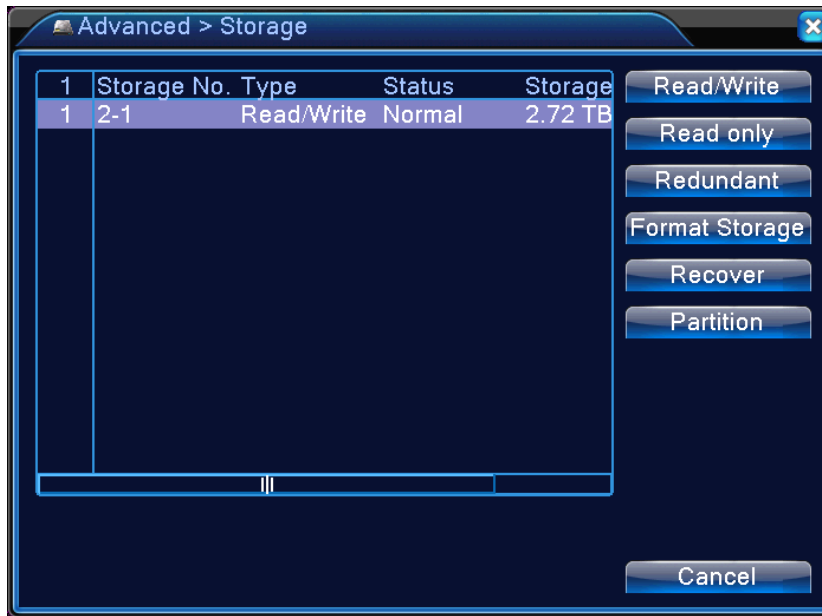
Manage tools menu provides HDD manage, account manage, online user, output adjust, auto maintain, restore, upgrade, device information and import/export functions.

5.5.1 HDD Management

Configure and manage the hard disk. The menu displays the following current hard disk information: hard disk number, input port, type, status and overall capability. The operation setup includes the write-read disk, read-only disk, redundant disk, hard disk format, recover

and partition. Choose the hard disk and right-click to execute.

 Note	<p><i>Read/Write Disk: The equipment can write or read data.</i></p> <p><i>Read-only Disk: The equipment can read data but cannot write data.</i></p> <p><i>Redundant Disk: Double-back up the video files in the write-read disk.</i></p>
---	--



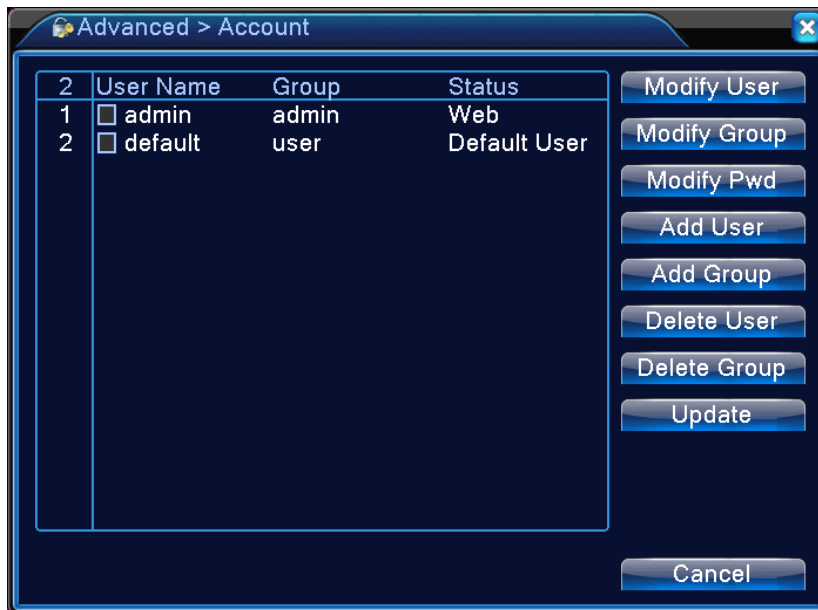
Picture 5.36 HDD Manage

5.5.2 Account

Manage the user purview.

1. The character length is 8 bytes at most for the following user and user team name. The blank ahead or behind the character string is invalid. The middle blank in the character string is valid. Legal characters include letter, number, underline, subtraction sign, and dot.
2. There is no limit in the user and user group. You can add or delete the user group according to user definition. The factory setup includes user and admin. You can set the team as you wish. The user can appoint the purview in the group.

3. The user management includes group and user. The group and user name cannot be the same. Each user only belongs to one group.




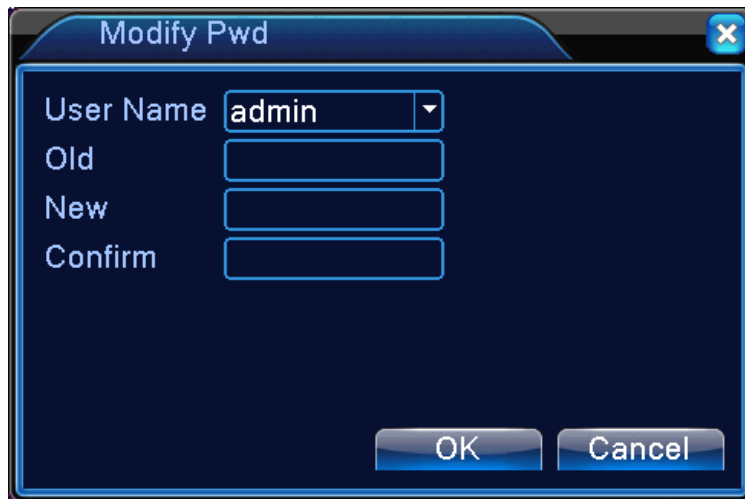
Picture 5.37 Account Management

Modify User: Modify the existing user attribute.

Modify Group: Modify the existing team attribute.

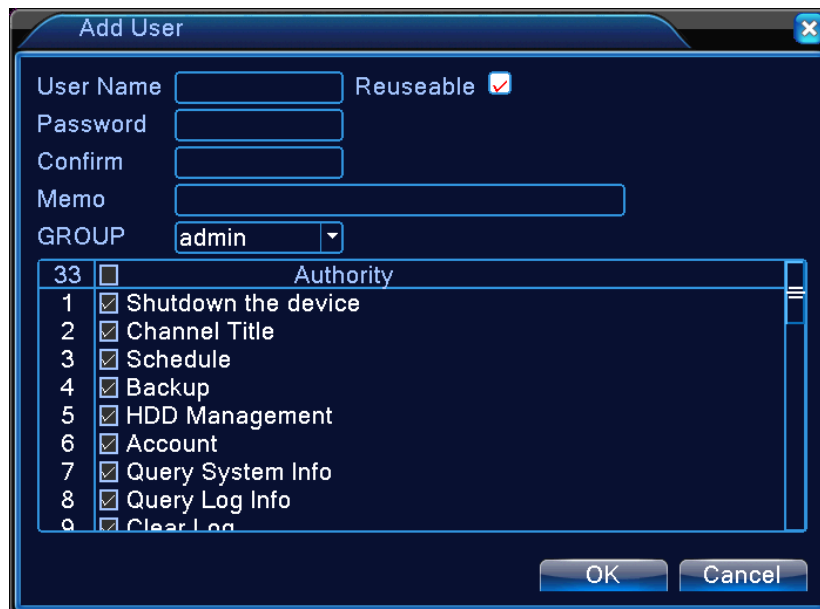
Modify Password: Modify the user password. You can set 1-6 bit password. The blank ahead or behind the character string is invalid. The middle blank in the character string is valid.

 Note	<i>The user who possesses the user control purview can modify his/her own or other user's password.</i>
---	---



Picture 5.38 Modifying Password

Add User: Add a user in the group and set the user purview. Enter the menu interface and input the user name and password. Choose the team and choose whether cover using the user. Cover using means that the account can be used by multiple users at the same time. Once the team is chosen, the user purview is the subclass of the team. We recommend that the common user's purview is lower than the advanced user.



Picture 5.39 Adding User

Add Group: Add a user group and set the purview. There are 33 different purviews: shut down the equipment, real-time surveillance, playback, record setting, video backup, etc.



Picture 5.40 Adding Group

Delete User: Delete the current user. Choose the user and click the delete user button.

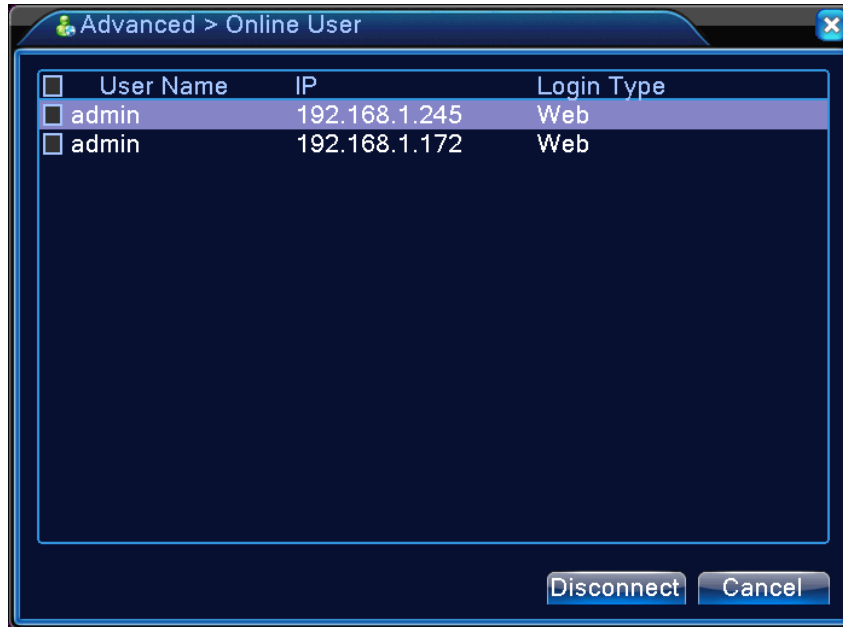
Delete Group: Delete the current group. Choose the group and click the delete group button.



Picture 5.41 Delete Group

5.5.3 Online User

Check the information of network user that is connected with local device. Tick the selected user to break up connection, (make at the box), and then the user will be frozen after connection is stopped. It will not log in until device reboots.



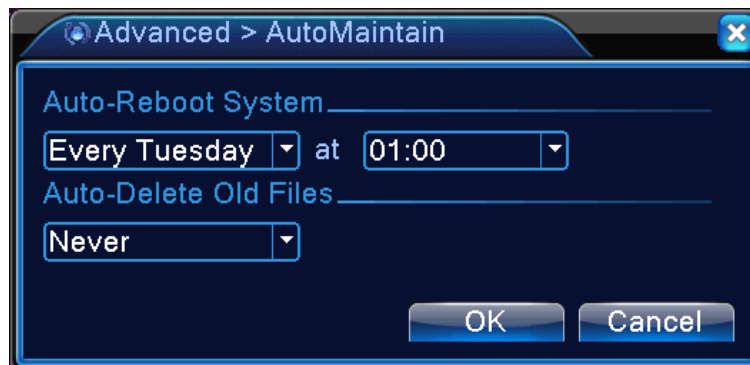
Picture 5.42 Online User

5.5.4 TV Adjust

Refer to Chapter 4.3.7.

5.5.5 Auto Maintain

The user can set the time to auto reboot and auto delete file.



Picture 5.43 Auto Maintain

5.5.6 Restore

Reset the NVR's settings to their factory default values. You can choose the items according to your requirements.



Picture 5.44 Restoring to Default

5.5.7 Upgrade



Picture 5.45 Upgrade

Upgrade: Choose USB interface.

Upgrade file: Choose the upgrade file.

5.5.8 Device Info

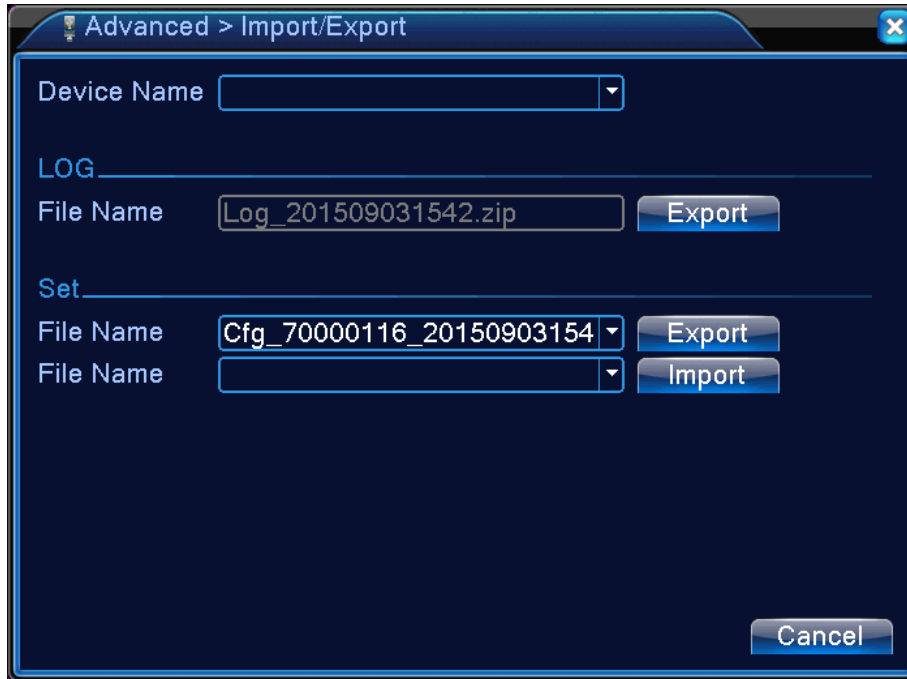
Provide information of device interface like audio in, alarm in/out.



Picture 5.46 Device Information

5.5.9 Import/Export

Users can export the log info and the configure file from device to connected flash stick, and also can import related configure file from flash stick to settings, which greatly bring convenience to the customers.



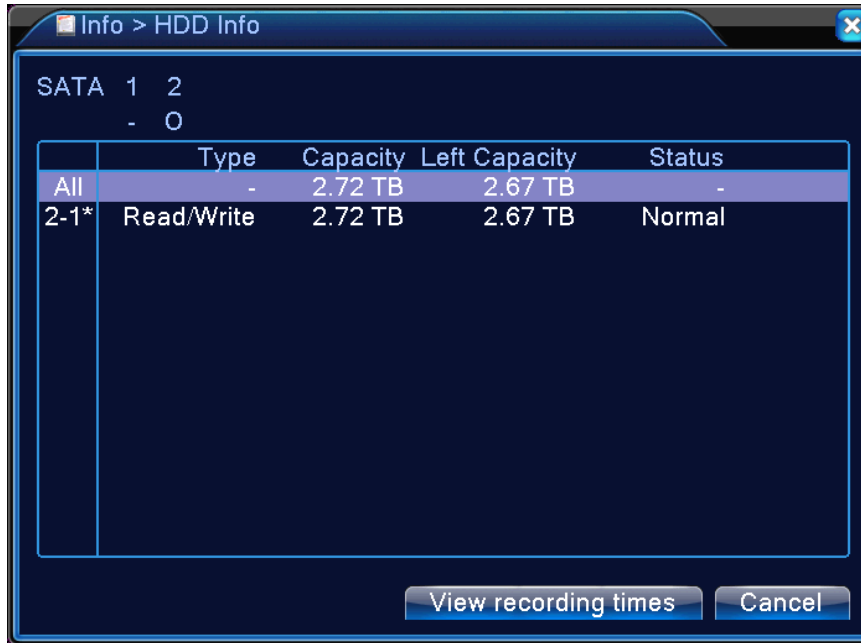
Picture 5.47 Import/Export Interface

5.6 Info

Display the hard disk information including HDD info, code stream statistic, log info and version info.

5.6.1 HDD Info

Display the hard disk state and it lists hard disk type, overall capability, residual capability, the recording time, etc.



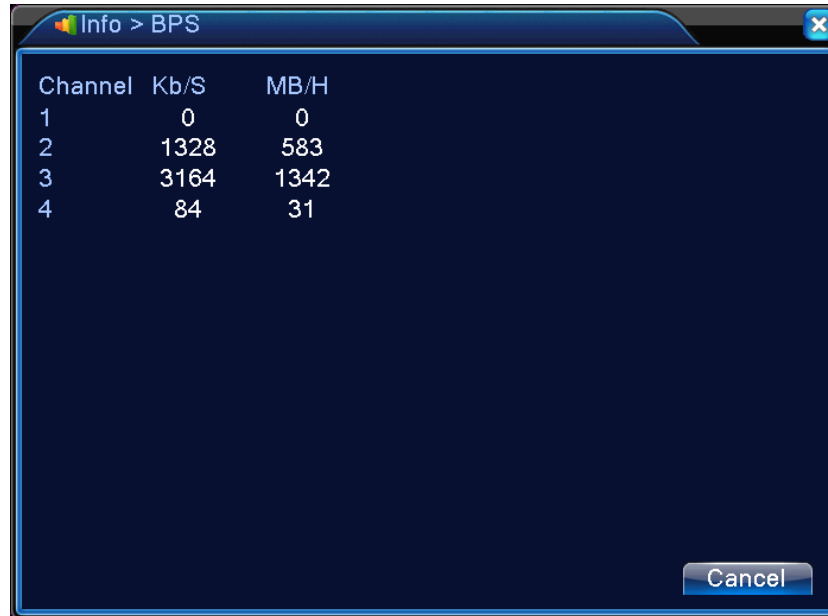
Picture 5.48 HDD Info

Tips: Symbol “o” means that the hard disk is normal; symbol “X” means that the hard disk is broken down; symbol “-” means that there is no hard disk. If you need to replace the damaged hard disk, you must shut down the DVR, take out all the damaged hard disks and then install new ones.

Symbol “*” behind serial number means the current working disk such as 1*. If the corresponding disk is damaged, the information will show “?”.

5.6.2 BPS

Display the code stream (Kb/S) and hard disk capability (MB/H) in real time. It displays as the wave sketch map.



The screenshot shows a window titled "Info > BPS" with a close button in the top right corner. The window contains a table with three columns: "Channel", "Kb/S", and "MB/H". The data is as follows:

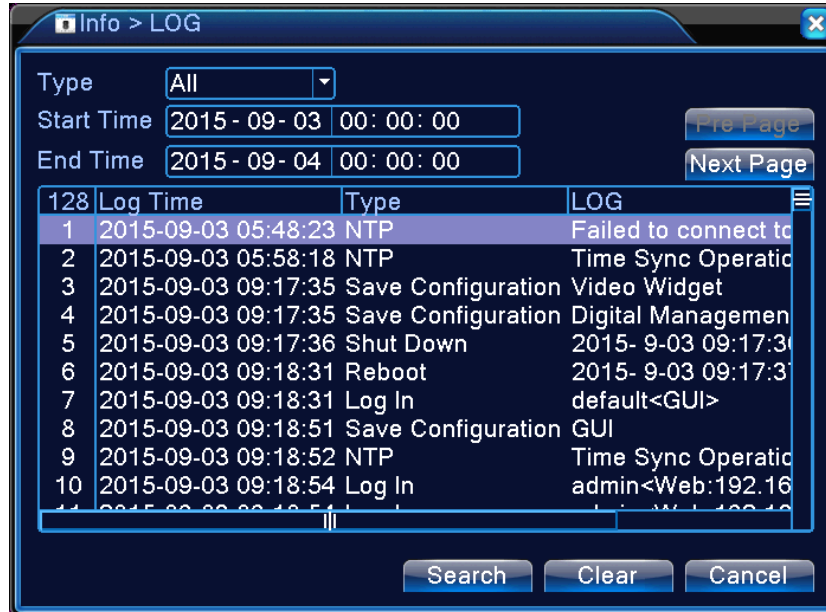
Channel	Kb/S	MB/H
1	0	0
2	1328	583
3	3164	1342
4	84	31

A "Cancel" button is located in the bottom right corner of the window.

Picture 5.49 BPS

5.6.3 Log

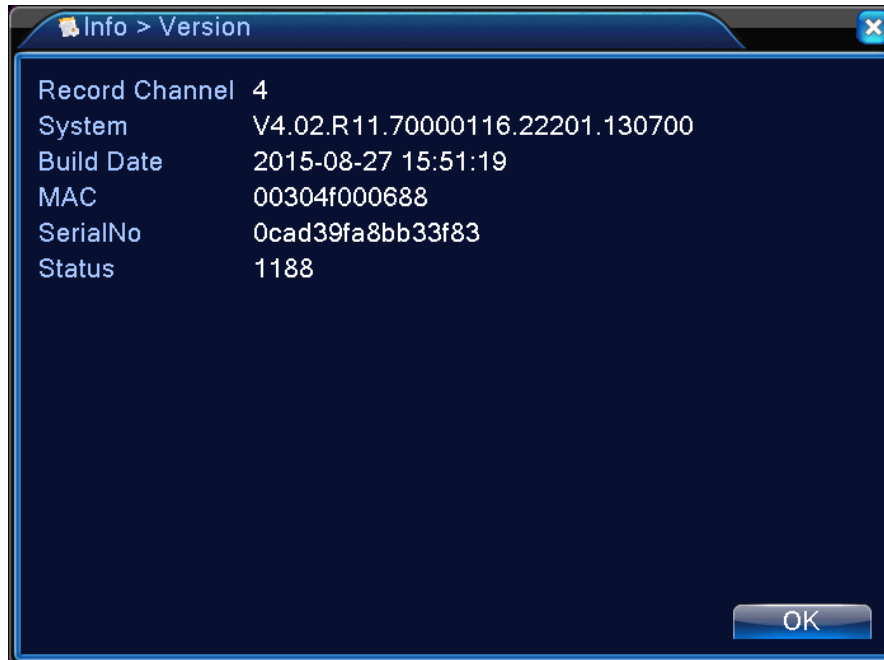
Log information includes system operation, configuration operation, data management, alarm affair, recording operation, user management, file management, etc. You can set the time section and click the **Search** button to look for logs. The log information will be displayed as the following list (one page lists 128 items). Next, you can press the **Pre Page** or **Next Page** button to browse and press the **Clear** button to clear all log information.



Picture 5.50 Log Information

5.6.4 Version

Display the basic information such as hardware information, software version, issue date, serial number and NAT status.



Picture 5.51 Version Information

5.7 Shut Down System


Refer to Chapter 4.3.8.

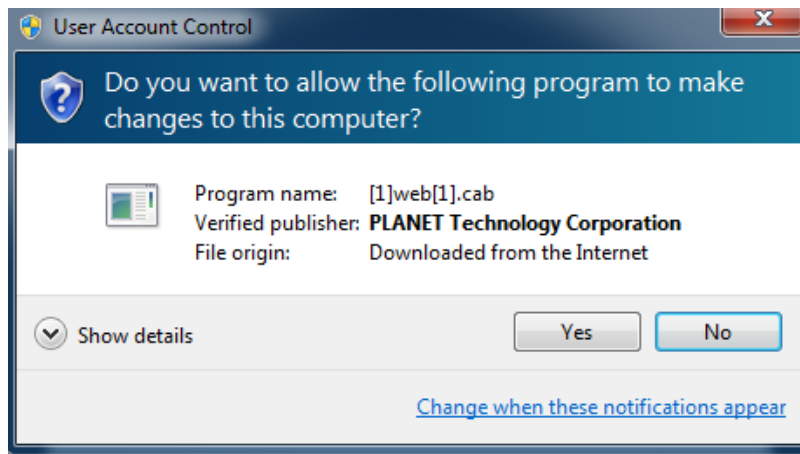
Chapter 6. Web Remote Management

The NVR is able to be viewed from Internet Explorer when the network is available. You can have live view, playback and most of the functions that are the same as those of the NVR system.

6.1 Connecting to HDVR

For first-time connection, you need to install the ActiveX control if it appears on your web page shown below:

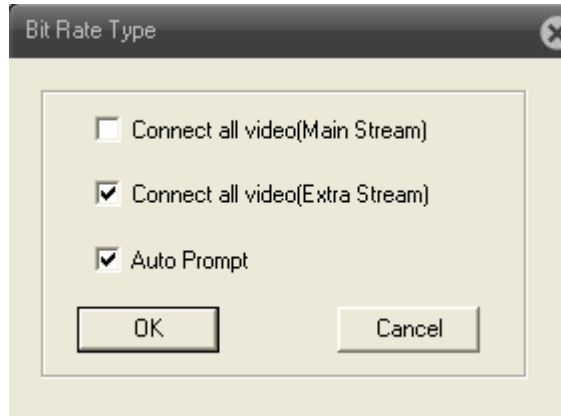
 This website wants to install the following add-on: 'web.cab' from 'PLANET Technology Corporation'.



After the ActiveX component is installed, login the system on pop-up window.



Please login your username and password to see the “Bit Rate Type” window shown below:



You may select bit rate type you would like to view on your computer. The bit rate type can impact bandwidth consumption on IE.

6.2 Live View on Browser

On the main page, the Web user interface provides playback, log, main config, local config and logout functions. All the main settings of the device are on the main config page.



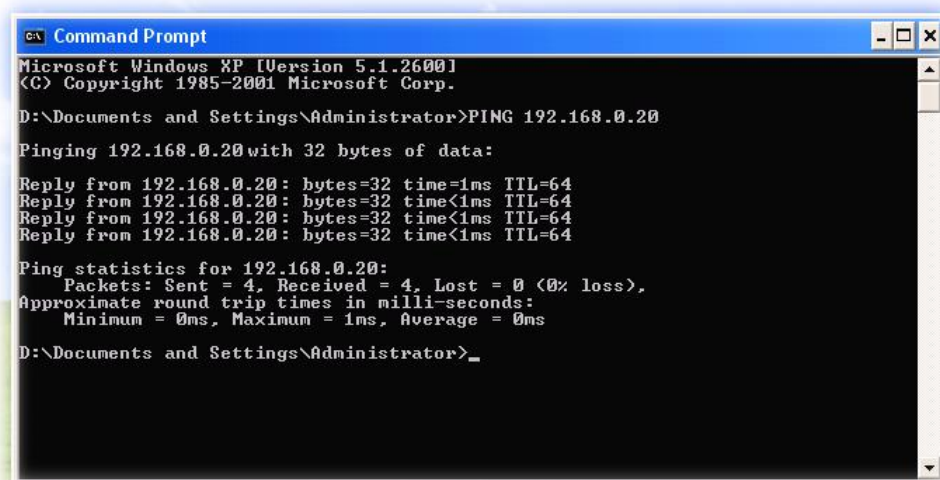
Appendix A: Ping IP Address

The ping (Packet Internet Groper) command is used to detect whether a specific IP address is accessible by sending a packet to the specific address and waiting for a reply. It's also a very useful tool to confirm whether or not Internet camera is installed or if the IP address conflicts with any other device over the network.

If you want to make sure the IP address of Internet camera, utilize the ping command as follows:

- Start a DOS window.
- Type ping x.x.x.x, where x.x.x.x is the IP address of the Internet camera.

The replies, as illustrated below, will provide an explanation to the problem.



```
Microsoft Windows XP [Version 5.1.2600]
(C) Copyright 1985-2001 Microsoft Corp.

D:\Documents and Settings\Administrator>PING 192.168.0.20

Pinging 192.168.0.20 with 32 bytes of data:

Reply from 192.168.0.20: bytes=32 time=1ms TTL=64
Reply from 192.168.0.20: bytes=32 time<1ms TTL=64
Reply from 192.168.0.20: bytes=32 time<1ms TTL=64
Reply from 192.168.0.20: bytes=32 time<1ms TTL=64

Ping statistics for 192.168.0.20:
    Packets: Sent = 4, Received = 4, Lost = 0 (0% loss),
    Approximate round trip times in milli-seconds:
        Minimum = 0ms, Maximum = 1ms, Average = 0ms

D:\Documents and Settings\Administrator>_
```

If you want to detect any other device that conflicts with the IP address of Internet camera, you also can utilize the ping command but you must disconnect the Internet camera from the network first.

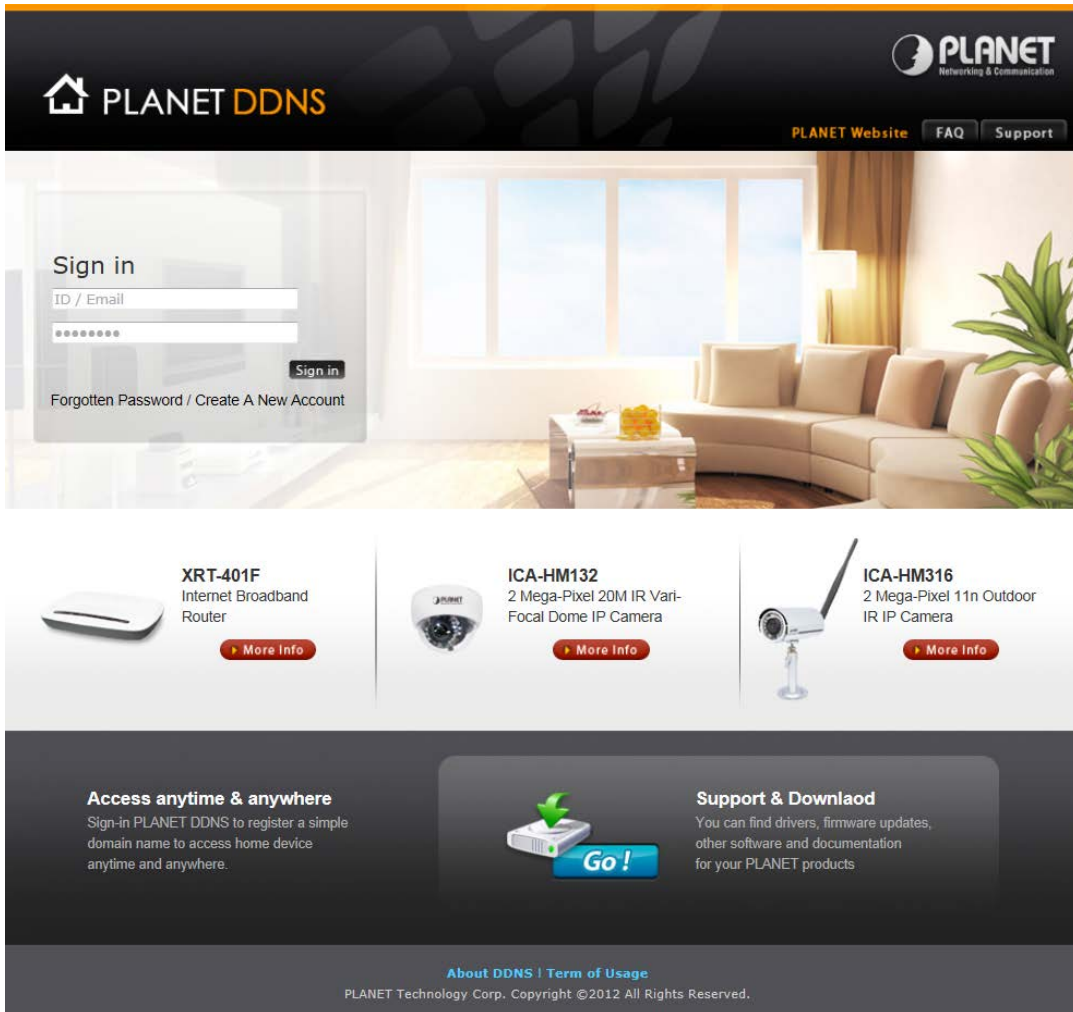
Appendix B: Planet DDNS Application

Configuring PLANET DDNS Steps:

Step 1 Visit DDNS provider's web site and register an account if you do not have one yet. For example, register an account at <http://planetddns.com>

Step 2 Enable DDNS option through accessing web page of the camera.

Step 3 Input all DDNS settings.



The screenshot shows the PLANET DDNS website. At the top, there is a navigation bar with the PLANET logo and links for 'PLANET Website', 'FAQ', and 'Support'. The main content area features a 'Sign in' form with fields for 'ID / Email' and a password field, a 'Sign in' button, and links for 'Forgotten Password / Create A New Account'. Below the sign-in form, there are three product cards: 'XRT-401F Internet Broadband Router', 'ICA-HM132 2 Mega-Pixel 20M IR Vari-Focal Dome IP Camera', and 'ICA-HM316 2 Mega-Pixel 11n Outdoor IR IP Camera', each with a 'More Info' button. At the bottom, there are two sections: 'Access anytime & anywhere' with a 'Go!' button and 'Support & Download' with a description of available resources. The footer contains the text 'About DDNS | Term of Usage' and 'PLANET Technology Corp. Copyright ©2012 All Rights Reserved.'

Appendix C: Configuring Port Forwarding Manually

The device can be used with a router. If the device wants to be accessed from the WAN, its IP address needs to be set up as a fixed IP address. The port forwarding or Virtual Server function of router also needs to be set up. This device supports UPnP traversal function. Therefore, user could use this feature to configure port forwarding of NAT router first. However, if user needs to configure port forwarding manually, please follow the steps below:

Manually installing the device with a router on your network is an easy 3–step procedure as follows:

1. Assign a local/fixed IP address to your device
2. Access the router with your web browser
3. Open/Configure virtual server ports of your router

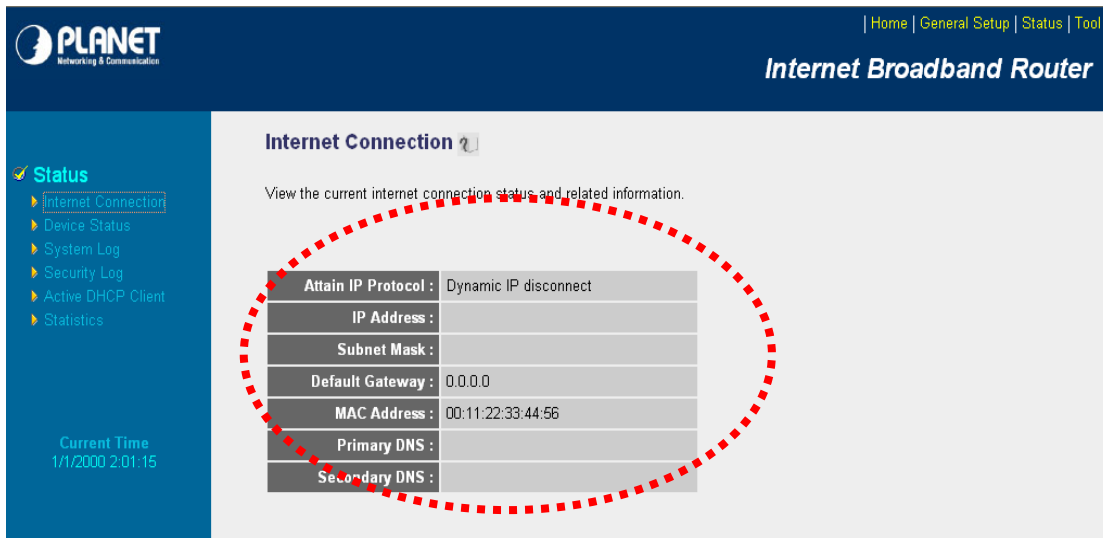
1. Assigning a local/fixed IP address to your device

The device must be assigned a local and fixed IP address that allows it to be recognized by the router. Manually set up the device with a fixed IP address, for example, 192.168.0.100.

2. Accessing the Router with Your Web browser

The following steps generally apply to any router that you have on your network. PLANET WNRT-620 is used as an example to clarify the configuration process. Configure the initial settings of the router by following the steps outlined in the router's **Quick Installation Guide**. If you have cable or DSL service, you will most likely have a dynamically assigned WAN IP address. 'Dynamic' means that your router's WAN IP address can change from time to time depending on your ISP. A dynamic WAN IP address identifies your router on the public network and allows it to access the Internet. To find out what your router's WAN IP address is, go to the **Status** screen on your router and locate the WAN information for your router.

As shown on the following page the WAN IP address will be listed. This will be the address that you will need to type in your web browser to view your camera over the Internet. Be sure to uncheck the **Reset IP address at the next boot** button at the top of the screen after modifying the IP address. Failure to do so will reset the IP address when you restart your computer.



PLANET Networking & Communication | Home | General Setup | Status | Tool

Internet Broadband Router

Internet Connection

View the current internet connection status and related information.

Attain IP Protocol :	Dynamic IP disconnect
IP Address :	
Subnet Mask :	
Default Gateway :	0.0.0.0
MAC Address :	00:11:22:33:44:56
Primary DNS :	
Secondary DNS :	

Current Time
1/1/2000 2:01:15

Your WAN IP address will be listed here.


3. Opening/Setting Virtual Server Ports to enable remote image viewing

The firewall security feature is built into the router and most routers prevent users from accessing the video from the device over the Internet. The router connects to the Internet over a series of numbered ports. The ports normally used by the device are blocked from access over the Internet. Therefore, these ports need to be made accessible over the Internet. This is accomplished using the **Virtual Server** function on the router. The Virtual Server ports used by the camera must be opened through the router for remote access to your camera.

Follow these steps to configure your router's Virtual Server settings

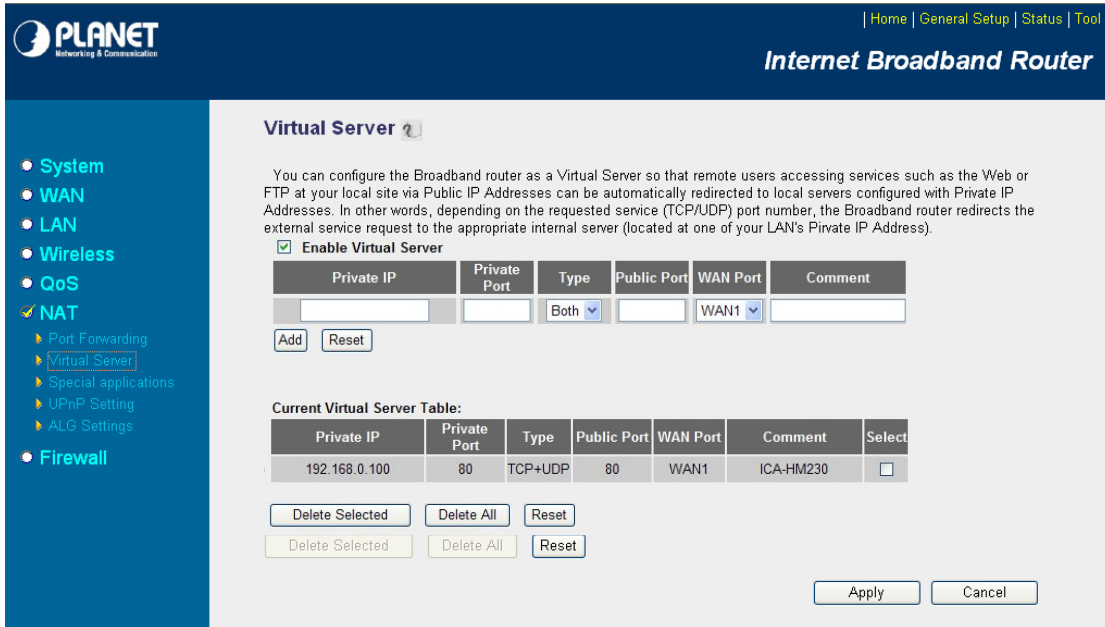
- Click **Enabled**.
- Enter a unique name for each entry.
- Select **Both** under **Protocol Type (TCP and UDP)**
- Enter your camera's local IP address (**192.168.0.100**, for example) in the **Private IP** field.
- If you are using the default camera port settings, enter **80** into the **Public** and **the Private Port** section and click **Add**.

A check mark appearing before the entry name will indicate that the ports are enabled.



Some ISPs block access to port 80. Be sure to check with your ISP so that you can open the appropriate ports accordingly. If your ISP does not pass traffic on port 80, you will need to change the port the camera uses from 80 to something else, such as 8080. Not all routers are the same, so refer to your user manual for specific

instructions on how to open ports.



Virtual Server ?

You can configure the Broadband router as a Virtual Server so that remote users accessing services such as the Web or FTP at your local site via Public IP Addresses can be automatically redirected to local servers configured with Private IP Addresses. In other words, depending on the requested service (TCP/UDP) port number, the Broadband router redirects the external service request to the appropriate internal server (located at one of your LAN's Private IP Address).

Enable Virtual Server

Private IP	Private Port	Type	Public Port	WAN Port	Comment
<input type="text"/>	<input type="text"/>	Both	<input type="text"/>	WAN1	<input type="text"/>

Add Reset

Current Virtual Server Table:

Private IP	Private Port	Type	Public Port	WAN Port	Comment	Select
192.168.0.100	80	TCP+UDP	80	WAN1	ICA-HM230	<input type="checkbox"/>

Delete Selected Delete All Reset

Delete Selected Delete All Reset

Apply Cancel

Enter valid ports in the **Virtual Server** section of your router. Please make sure to check the box on this line to enable settings. Then the device can be accessed from WAN by the router's WAN IP address.

By now, you have finished your entire PC configuration for this device.