

Thank you for purchasing PLANET PCI Express Gigabit Ethernet adapter. It is a 1000Mbps Ethernet adapter for x1 PCI Express bus-compliant PCs. Supports Auto-Negotiation for Ethernet connection. The Gigabit Ethernet adapter provides a highly cost-effective solution to upgrading to the Gigabit network with your existing Ethernet infrastructures.

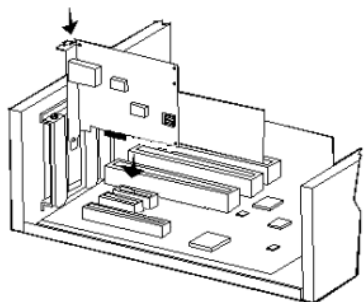
Package Content

- 1 x ENW-9700
- 1 x Quick Installation Guide
- 1 x CD-ROM

- 1 -

Hardware Installation

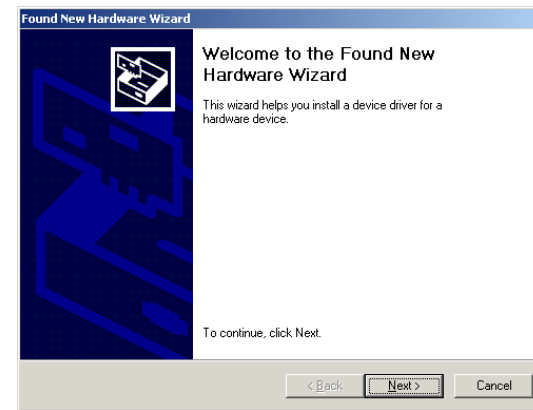
- Step 1: Please turn off your PC.
- Step 2: Remove any metal decorations from your hands and wrists.
- Step 3: Remove the cover from your PC.
- Step 4: Locate an empty PCI Express slot and remove the corresponding back plate. Save the screw for use in Step 6.
- Step 5: Carefully insert the Gigabit Ethernet Adapter into the chosen slot and press firmly with proper push to ensure it is fully seated in the slot.
- Step 6: Secure the Gigabit Ethernet Adapter with the screw you saved in step 4.
- Step 7: Replace the PC cover.
- Step 8: Power on your PC and refer to next section to install driver.



- 2 -

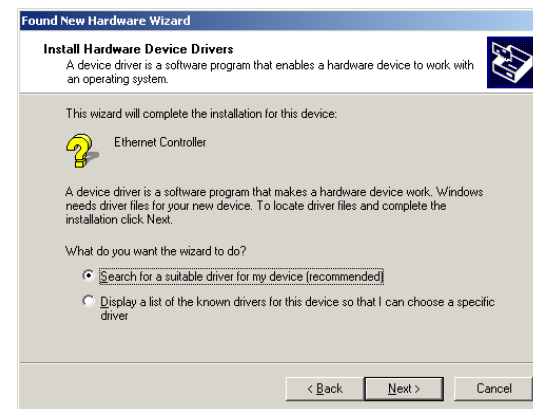
Installation on Windows 2000

1. After insert ENW-9700 into your PC and boot up. Windows will detect it and show a dialog box below, press "Next".



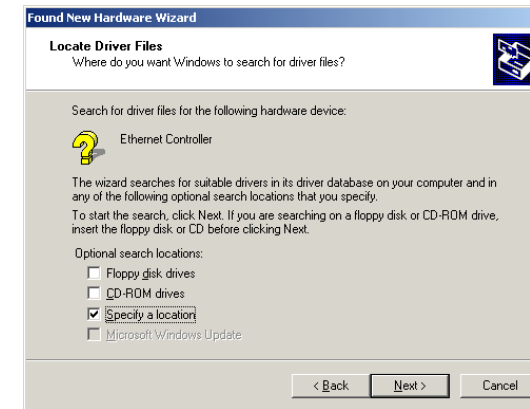
- 3 -

2. Please select the first option and click "Next" to continue.



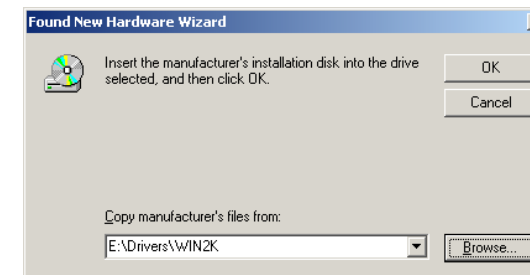
- 4 -

3. Select "Specify a location" and click "Next".



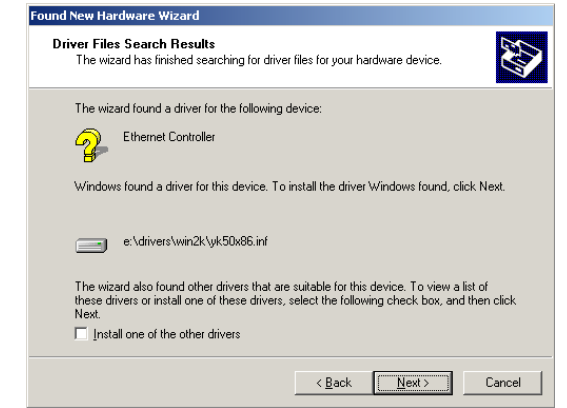
- 5 -

4. Please click "Browse" to find the driver location. (Assume "E" is your CD-ROM drive, the driver can be found in E:\Drivers\Win2K). After find out the driver, please click "OK" to continue.



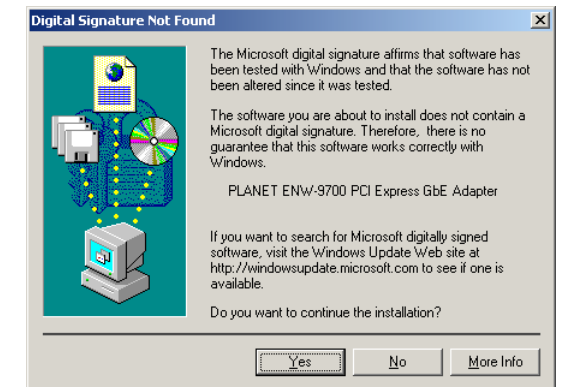
- 6 -

5. Please click "Next" to continue.



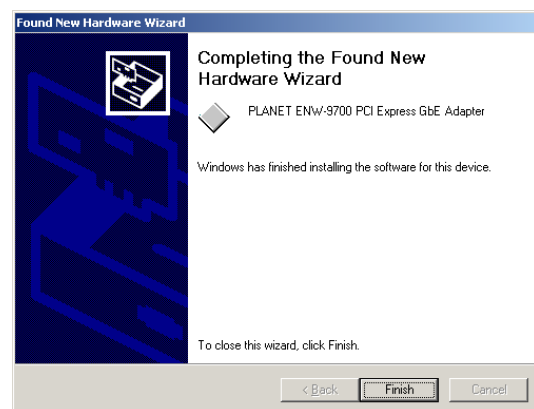
- 7 -

6. You can see the device name in this dialog box. If the device name is correct, please press "Yes" to continue.



- 8 -

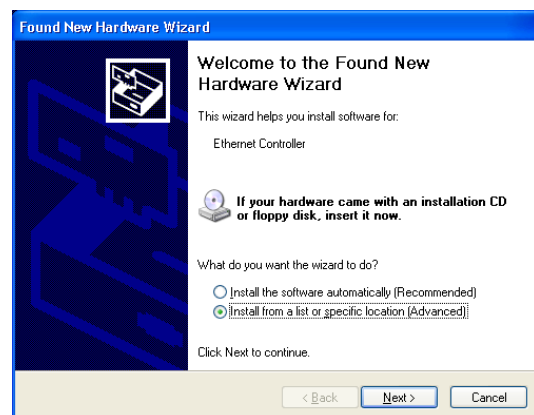
7. Please click "Finish" to complete the driver installation.



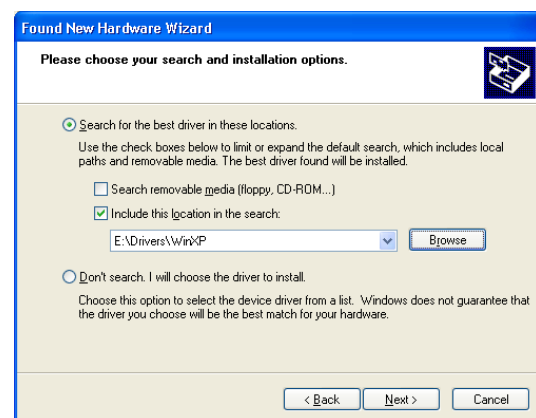
Installation on Windows XP/Server 2003

Note: This operation is under WinXP, it is similar to Windows Server 2003.

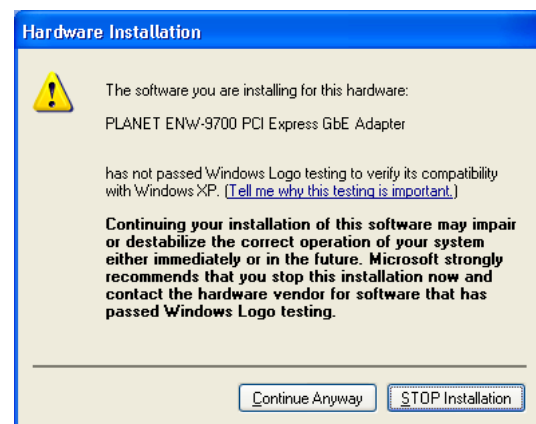
1. After installing ENW-9700 to your PC and boot up, Windows XP will detect it and ask you to install driver. Please select the second option and click "Next".



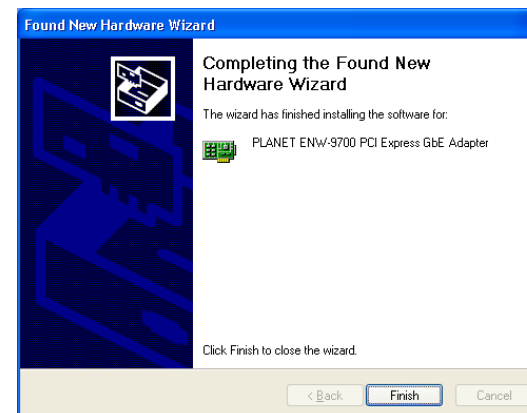
2. Please select "Include this location in the search" and then click "Browse" to specify the driver location to install. (Assume "E" is your CD-ROM drive, the driver can be found in E:\Drivers\WinXP). Click "Next" to continue.



3. WinXP will show this dialog box to prompt you the driver has not passed Windows logo testing, please click "Continue Anyway", then WinXP will start to install the driver.



4. Click "Finish" to complete the driver installation.



For more details, please refer to the manual of our bundle CD-ROM.

