

1 Overview

Thank you for purchasing PLANET 150-watt AC power supply.

Power Supply Unit	Input Range
XGS3-PWR150-AC	100 to 240V AC

Open the box of the Redundant Power Supply unit and carefully unpack it. The box should contain the following items:

- The AC Power Supply unit x 1
- User's Manual x 1

If any item is found missing or damaged, please contact your local reseller for replacement.

- 1 -

3 Installing Redundant Power Supply Unit



Note

The XGS3-PWR150-AC is hot-swappable during operation; there is no need to power off the Switch before removing the module.

Follow these steps to install the redundant power into the Switch:

1. Place the Switch on a flat surface. Grasp the thumbscrew on the sides of the blank bracket and turn counter-clockwise to unscrew them. You can also use a screwdriver to remove the blank bracket. Do not discard the blank bracket. Put the blank bracket back if you remove power the module from the Switch.



Figure 3-1 Removing the blank bracket

- 3 -

2 Introduction

Before installation, please be sure to read this user's manual carefully to successfully complete the installation of the machine. This manual shows how to quickly install the power into the XGS3-24042/XGS3-24242.

The following figure illustrates the front panel of the XGS3-PWR150-AC.

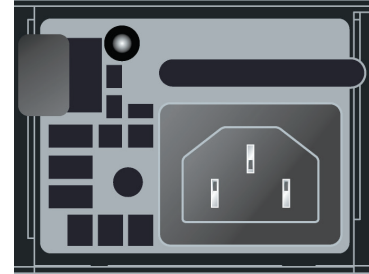


Figure 2-1 XGS3-PWR150-AC Front View

LED	Color	Function
LNK/ACT	Green	Lights to indicate AC power input has power.
	Red	Blinks to warningly indicate AC power input has failed.

- 2 -

2. Install the redundant power by inserting it into the rails and sliding it.

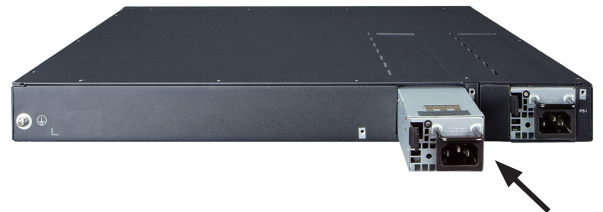


Figure 3-2 Inserting the XGS3-PWR150-AC

3. Hear the redundant power snap in place to finish insertion.



Figure 3-3 Inserting the XGS3-PWR150-AC

- 4 -

DC Power Supply

XGS3-PWR150-AC

www.PLANET.com.tw

150-watt AC Power Supply



PLANET Technology Corp.
11F., No. 96, Minquan Rd., Xindian Dist., New Taipei City 231, Taiwan
2351-A96340-000



4 Removing Redundant Power Supply Unit

Follow these steps to install the redundant power into the Switch:

1. Remove AC power cord from the XGS3-PWR150-AC.
2. To remove the redundant power from the XGS3-24042/ XGS3-24242, move the lever to the right and pull it out.

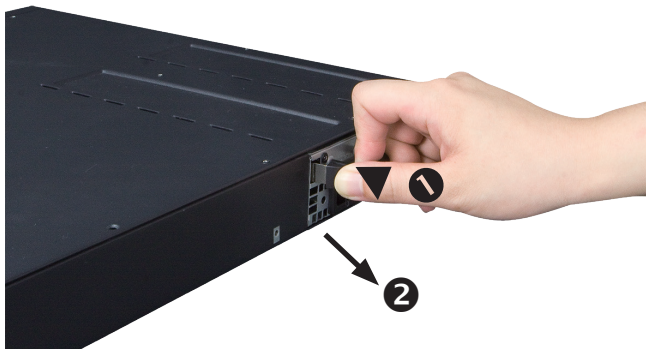


Figure 4-1 Removing the XGS3-PWR150-AC