

## 1. Package Content

Thank you for purchasing PLANET Layer 2 Gigabit Managed Industrial Switch, IGS-8044MT. Terms of "Managed Industrial Switch" means the Switch mentioned titled in the cover page of this Quick installation guide, i.e. IGS-8044MT.

Open the box of the Managed Industrial Switch and carefully unpack it. The box should contain the following items:

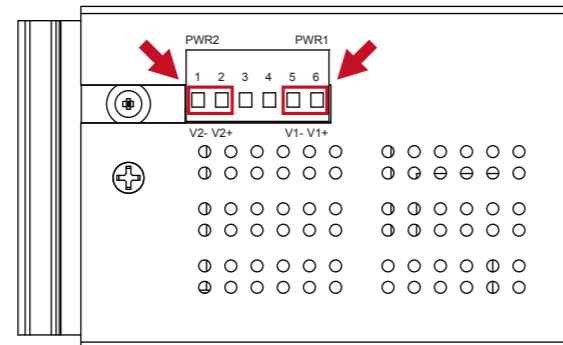
- The IGS-8044MT Managed Industrial Switch x 1
- User's manual CD x 1
- Quick installation guide x 1
- RS232 cable (RJ-45 to DB9) x 1
- Rack-mounting Kit x 1 (set)

If any item is found missing or damaged, please contact your local reseller for replacement.

## 3. Wiring the Power Inputs

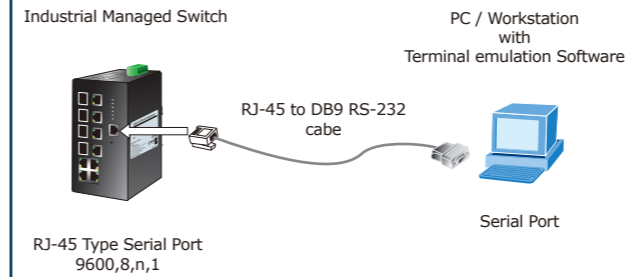
The 6-contact terminal block connector on the top panel of IGS-8044MT is used for dual DC redundant power input. Please follow the steps below to insert the power wire.

1. Insert positive / negative DC power wires into the contacts 1 and 2 for POWER 2, or 5 and 6 for POWER 1.



## 4. Terminal Setup

To configure the system, connect a serial cable to a COM port on a PC or notebook computer and to RJ-45 type serial (console) port of the Managed Industrial Switch. The console port of the Managed Industrial Switch is DCE already, so that you can connect the console port directly through PC without the need of Null Modem.



A terminal program is required to make the software connection to the The Managed Industrial Switch. Windows' Hyper Terminal program may be a good choice. The Hyper Terminal can be accessed from the **Start** menu.

1. Click **START**, then **Programs, Accessories** and then **Hyper Terminal**.

## 5. Logon to the Console

Once the terminal has connected to the device, power on the Managed Industrial Switch, the terminal will prompt login user name and password. The factory default user name and password show as following and the login screen in Figure 5-1 appears.

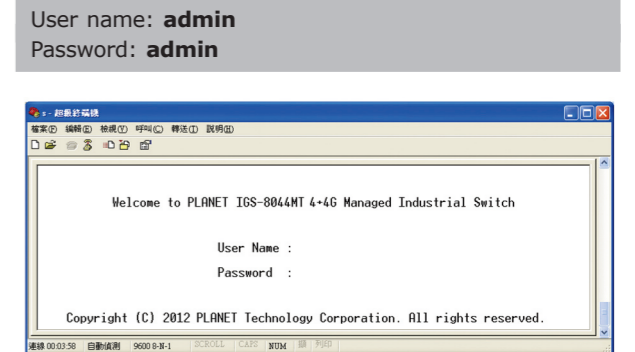


Figure 5-1 The Managed Industrial Switch Console Login screen

- Note
1. For security reason, please change and memorize the new password after this first setup.
  2. Only accept command in lowercase letter under console interface.

## 2. Requirements

- Workstations of subscribers running Windows 98/ME, NT4.0, 2000/2003/XP, MAC OS9 or later, Linux, UNIX or other platform compatible with TCP/IP protocols.

- Workstation installed with Ethernet NIC (Network Card)

### • Serial Port connect (Terminal)

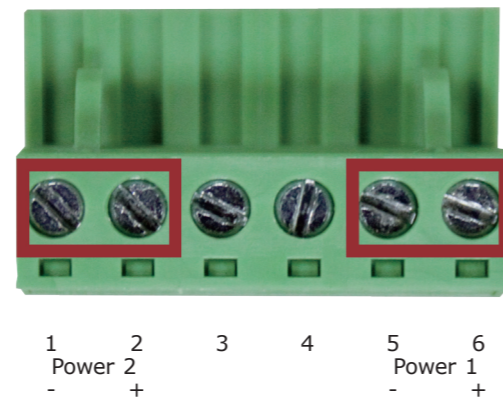
- ◆ Above PC with COM Port(DB-9)

### • Ethernet Port connect

- ◆ Network cables - Use standard network (UTP) cables with RJ45 connectors.
- ◆ Above PC installed with WEB Browser and JAVA runtime environment Plug-in

Note It is recommended to use Internet Explore 6.0 or above to access IGS-8044MT Managed Industrial Switch.

2. Tighten the wire-clamp screws for preventing the wires from loosing.

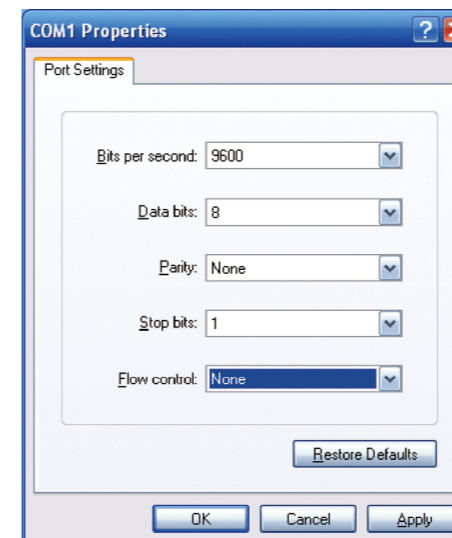


Note The wire gauge for the terminal block should be in the range between 12 ~ 24 AWG.

3. IGS-8044MT supports wide-range DC power input which means user could input DC power from 12V to 48V, 2.5A.

2. When the following screen appears, make sure that the COM port should be configured as:

- ◆ Baud : 9600
- ◆ Parity : None
- ◆ Data bits : 8
- ◆ Stop bits : 1
- ◆ Flow Control : None



## 6. Configure IP address

The Managed Industrial Switch is shipped with default IP address as following.

IP Address : **192.168.0.100**  
Subnet Mask : **255.255.255.0**

To check the current IP address or modify a new IP address for the Managed Industrial Switch, please refer to procedures as following:

### ■ Show the current IP address

1. On "**Switch>**" prompt, enter "**enable**" to enter Privileged EXEC mode, and then enter "**show ip**" after showed "**Switch#**".
2. The screen displays the current IP address, Subnet Mask and Gateway. As show in Figure 6-1.

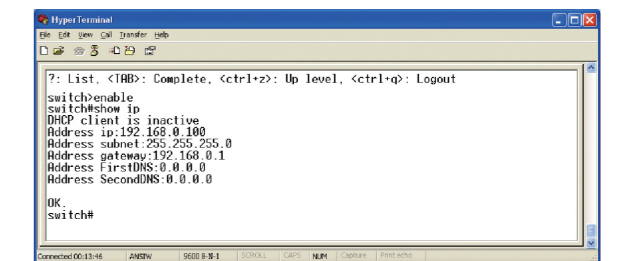


Figure 6-1 Show IP information screen

### ■ Configure IP address

1. On "**Switch#**" prompt, type "**configure**" to enter the configuration Mode.
2. On "**Switch (config)#**" prompt, enter the following command and press <Enter>. As show in Figure 6-2.

```
Switch (config)# ip address 192.168.1.100
255.255.255.0 192.168.1.1
```

3. On "**Switch(config)#**" prompt enter "**exit**", and on "**Switch#**" prompt enter "**show ip**" to check the IP address has been changed.

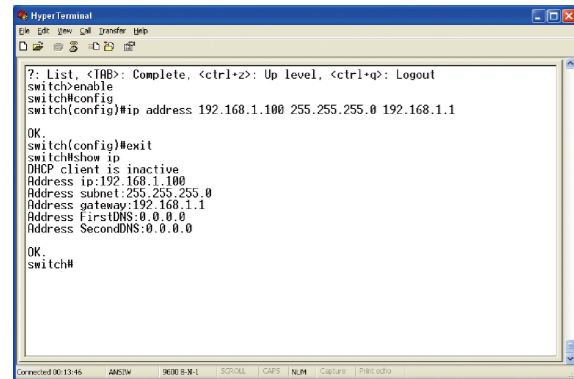


Figure 6-2 Set IP address screen

## 7. Start Web Management

The following shows how to start up the **Web Management** of the the Managed Industrial Switch. Note the Managed Industrial Switch is configured through an Ethernet connection, please make sure the manager PC must be set on the same **IP subnet address**.

For example, the default IP address of the Managed Industrial Switch is **192.168.0.100**, then the manager PC should be set at **192.168.0.x** (where x is a number between 1 and 254, except 100), and the default subnet mask is 255.255.255.0.

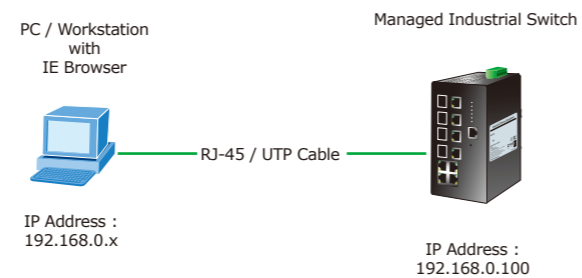


Figure 7-1 IP Management diagram



**-40~75°C** | **4-Port 10/100/1000Mbps + 4G TP/SFP Combo**  
**IGS-8044MT** | **Managed Industrial Switch**



Quick Installation Guide

If the IP is successfully configured, the Managed Industrial Switch will apply the new IP address setting immediately. You can access the Web interface of The Managed Industrial Switch through the new IP address.

4. Please remember to save new configuration to system after you made any changing. On "**Switch#**" to enter "**wr mem**" and then system will save current configuration to flash immediately.



1. If you don't familiar with console command or the related parameter, enter "?" anytime in console to get the help description.
2. If you don't save configuration to system, the new setting will be lost after system reboot or power recycle

### ■ Login the Managed Switch

1. Use Internet Explorer 6.0 or above Web browser, enter IP address **http://192.168.0.100** (the factory-default IP address or that you have just changed in console) to access the Web interface.
2. When the following dialog box appears, please enter the default user name "**admin**" and password "**admin**" (or the username/password you have changed via console). The login screen in Figure 7-2 appears.

Default User name: **admin**  
 Default Password: **admin**

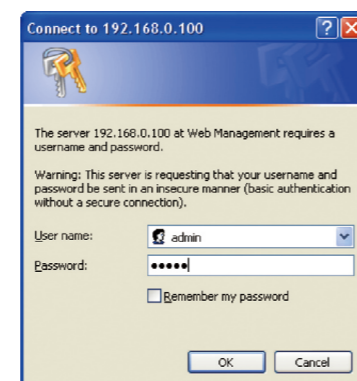


Figure 7-2 Login screen

3. After entering the password, the main screen appears as Figure 7-3.

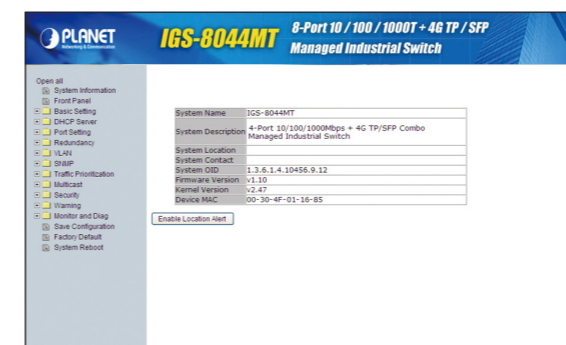


Figure 7-3 Web Main Screen of the Managed Industrial Switch

4. The Switch Menu on the left of the Web page let you access all the commands and statistics the Switch provides.

Now, you can use the Web management interface to continue the Switch management or manage the Switch by console interface.

Please refer to the user manual for more.

## 8. Customer Support

Thank you for purchase PLANET products. You can browse our online FAQ resource at the PLANET web site first to check if it could solve you issue. If you need more support information, please contact PLANET switch support team.

PLANET WEB site:  
<http://www.planet.com.tw>

Switch support team mail address:  
[support\\_switch@planet.com.tw](mailto:support_switch@planet.com.tw)