



1. Introduction

Thank you for purchasing PLANET H.265 Smart IR PoE IP Camera. The "ICA-x80 series" is used as an alternative name in this Quick Installation Guide. The following is the ICA-x80 series:

ICA-3280	H.265 1080p Smart IR Bullet IP Camera
ICA-4280	H.265 1080p Smart IR Dome IP Camera
ICA-A3280	H.265 1080p Smart IR Bullet IP Camera with Artificial Intelligence
ICA-A4280	H.265 1080p Smart IR Dome IP Camera with Artificial Intelligence
ICA-M3580P	H.265 5 Mega-pixel Smart IR Bullet IP Camera with Remote Focus and Zoom
ICA-M4580P	H.265 5 Mega-pixel Smart IR Dome IP Camera with Remote Focus and Zoom

2. Package Contents

Open the box of the ICA-x80 series and carefully unpack it. The box should contain the following items:

- The IP Camera x 1
- Quick Installation Guide x 1
- Screw Package x 1
- Waterproof Connector Package x 1
- Drill Template x 1

If any item is found missing or damaged, please contact your local reseller for replacement.

3. Requirements

- Workstations running Windows XP/2003/2008/Vista/7/8/10, MAC OS X or later, Linux, UNIX, or other platforms are compatible with TCP/IP protocols.
- Workstations are installed with Ethernet NIC (Network Interface Card).
- Ethernet Port Connection
 - **Network cables** -- Use standard network (UTP) cables with RJ45 connectors.
 - The above PC is installed with **Web browser**.



Note

It is recommended to use Internet Explorer 8.0 or above to access the ICA-x80 series. If the Web interface of the ICA-x80 series is not accessible, please turn off the anti-virus software or firewall and then try it again.

4. Starting Web Management

The following shows how to start up the Web Management of the ICA-x80 series. Note the ICA-x80 series is configured through an Ethernet connection. Please make sure the manager PC must be set to the same IP subnet address.

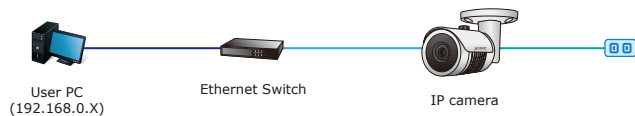


Figure 4-1: IP Management Diagram



Note

1. The ICA-x80 series supports IEEE 802.3af; be reminded to power either from AC to DC adapter or 802.3af PoE switch.
2. The AC to DC adapter is not included in the package.

For example, the ICA-x80 series default network type is **DHCP Client**; to search the current IP address of the ICA-x80 series, follow the procedure below:

1. Download the "PLANET Search Tools" utility from the following PLANET website link: <http://www.planet.com.tw/en/support/downloads?method=keyword&keyword=PLANET+Search+Tools&view=6#list>
2. Install the "PLANET Search Tools" utility.
3. After the camera utility is launched, all cameras found in your local area network will be displayed.
4. The existing ICA-x80 series in the local network.
5. Search the ICA-x80 series in the network.
6. Modify the IP parameters of the selected ICA-x80 series.
7. Select the ICA-x80 series you want to configure and double-click on it.
8. You will be connected to the ICA-x80 series via web browser automatically.

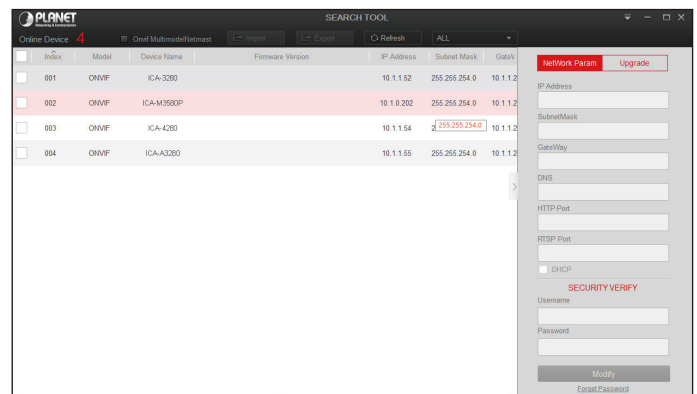


Figure 4-2: PLANET Search Tools Utility Screen

9. Without DHCP server, the ICA-x80 series default IP address is **192.168.0.20**, then the manager PC should be set to **192.168.0.x** (where x is a number between 1 and 254, except 20), and the default subnet mask is 255.255.255.0.

■ Logging in to the ICA-x80 Series

When the following dialog box appears, please enter the default user name and password "admin". The login screen in Figure 4-3 appears.

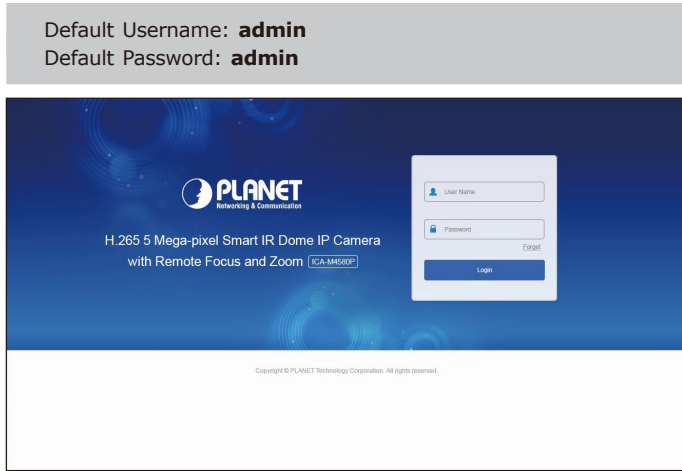



Figure 4-3: ICA-x80 series Web Login Screen

 **Note**
The following web screen based on ICA-M4580P will be the same as that of ICA-x80 series.

value, press the hardware-based reset button for about 10 seconds. After the ICA-x80 series is rebooted, you can log in the management Web interface within the factory default mode.



Figure 5-1: Reset Button

Customer Support

Thank you for purchasing PLANET products. You can browse our online FAQ resource and User's Manual on PLANET Web site first to check if it could solve your issue. If you need more support information, please contact PLANET support team.

PLANET online FAQs:
<http://www.planet.com.tw/en/support/faq?method=category&c1=8>

Support team mail address:
support@planet.com.tw

After entering the username and password, the main screen appears as Figure 4-4 shows.

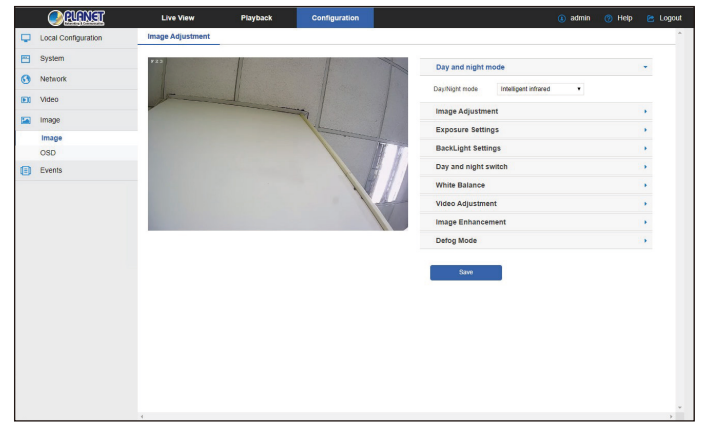


Figure 4-4: Web Main Screen of ICA-x80 series

Now, you can use the Web management interface to continue the ICA-x80 series management.

Please refer to the user's manual for more.



5. Recovering Back to Default Configuration

■ IP Address has been changed or admin password has been forgotten –

To reset the network type to the default "DHCP Client" with IP address "192.168.0.20" or reset the login password to default

ICA-x80 Series User's Manual:
<https://www.planet.com.tw/en/support/downloads?&method=keyword&keyword=ICA-x80+series&view=3#list>



Android APP	IOS APP
	

Copyright © PLANET Technology Corp. 2020.
Contents are subject to revision without prior notice.
PLANET is a registered trademark of PLANET Technology Corp.
All other trademarks belong to their respective owners.

PLANET Technology Corp.
10F., No. 96, Minquan Rd., Xindian Dist., New Taipei City 231, Taiwan

2011-AB8200-000

Warning:
This device is compliant with Class A of CISPR 32.
In a residential environment this device may cause radio interference.



Energy Saving Note of the Device
This power required device does not support Standby mode operation. For energy savings, please remove the power cable to disconnect the device from the power circuit. Without removing the power cable, the device will still consume power from the power source. In view of Saving the Energy and reducing the unnecessary power consumption, it is strongly suggested to remove the power cable from the device if this device is not intended to be active.