

Internet Telephony PBX System



For meeting the demands from customers, PLANET proudly introduces the latest PLANET VoIP product - Internet PBX system - IPX-1500. The IPX-1500 not only inherits from the same features in IPX-1000 (auto-attendant, voicemailetc.), but also enhances superior features, such as voicemail-to-mail, IP extension, and call conferencing.

Based on state-of-the-art embedded technology, the IPX-1500 provides a solid, uniform platform for voice communications as well as data network communications. The IPX-1500 offers a seamlessly integrated solution for the up-to-date telecommunication needs. The IPX-1500 is an ideal choice of cost saving solution for SOHO and SMB.

Being more flexible, the IPX-1500 provides 8 CO lines (FXO interface, also called outside lines or trunk lines), 16 extension lines (FXS interface, also called inside lines or station lines), and the newly introduced IP extension to bring the Maximum convenience and functionality for your office communications. All the physical telephony ports in the IPX-1500 are analog with no special and proprietary hardware limitations during installation.

Conventional telephony features, such as auto attendant, voicemail with personal greeting message, automatic roll over, call forwarding, CO line usage logging, and toll restriction are now able to be applied to the IP extensions in IPX-1500, you may integrate IP phones as the extension in your office. The IPX-1500 not only maintains the existing telephony system, but also introduces the new infrastructure into the communication field. VoIP functions are transparently integrated with conventional telephony functions in the IPX-1500 design, and a uniform user interface is provided for both conventional and VoIP functions. More than these, the IPX-1500 provides router service, IP sharing (NAT), firewall, VPN, DHCP server and QoS support to meet all the network demands in your office network. The VPN feature in IPX-1500 can help corporation users to establish secure, distributed inter-office voice communications.

KEY FEATURE

- **VoIP quality with QoS (Quality of Service) support**

With guaranteed bandwidth network QoS management, the IPX-1500 provides superior voice quality in a congested network environment

- **IP extension support**

Newly introduced IP extension to bring the Maximum flexibility when planning and deploying your communication network, up to 32 extensions support (16 ext. 16 IP ext.)

- **Distributed VoIP network infrastructure**

Based on the distributed network architecture, you may combine the PLANET IPX-1000, IPX-1500, and the IP phones for voice communication network. The IPX-1000 can be installed in the branch office and communicate with the IPX-1500 in the head quarter. You can call a remote extension in the branch by dialing a simple extension number as if you are dialing a local extension

- **Off-net calling capability, call restriction, call access control**

Off-net Security controls in IPX-1500 can prevent from improper VoIP usages and all incoming off-net calls with unknown privilege. If the incoming off-net calls are with unknown privilege, VoIP administrator may ensure the proper usage of your VoIP and save your costs

- **Replaces old PBX directly without requiring any new wiring to be put in**

Telephony interfaces in IPX-1500 are analog ones, no special or proprietary hardware is required to build up the connection, the IPX-1500 saves the TOC for SOHO and SMB

- **VPN tunneling, policy based firewall protection**

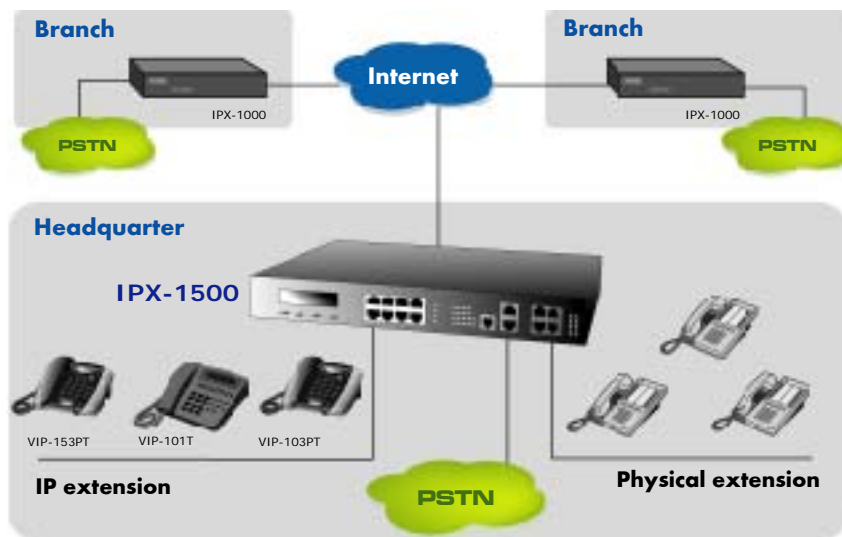
The IPX-1500 supports policy-based firewall protection to bring more security for Internet access; the integrated VPN tunneling capability are optimized for the voice and data communications between your headquarter and branch

- **Intuitive, ease-of-use web machine management**

The network administrator can configure and manage IPX-1500 via standard web browser anywhere around the world

SPECIFICATION

Product	Internet Telephony PBX System
Model	IPX-1500
Hardware	
LAN	8 (10Base-T/100Base-TX, Auto-Negotiation)
WAN	1 (10Base-T/100Base-TX, Auto-Negotiation)
Telephony ports	6 RJ-45 (4 for extension, 2 for CO/PSTN line connection)
Standards and Protocol	
Call control	H.323
Voice CODEC support	G.723.1/G.729a
Voice processing	Voice Active Detection, DTMF detection/generation, G.165/G.168 echo cancellation (ECN) (25 ms.), Comfort noise generation (CNG), Gain Control
Internet Sharing	
Protocol	TCP/IP, NAT, DHCP, HTTP, DNS
Advanced Function	Port mapping, DMZ, policy based firewall, QoS
Management	HTTP
Environment	
Operating Temperature	0~50 Degree C, 10~90% Humidity
Power Requirement	100-240VAC, 50/60Hz
EMC/EMI	CE, FCC
Network and Configuration	
Connection type	Static IP, PPPoE, DHCP
Management	Web

APPLICATIONS

ORDERING INFORMATION

IPX-1500	Internet Telephony PBX System (4 x VoIP, 8 x CO, 16 x extension lines, 16 x IP extension)
-----------------	--